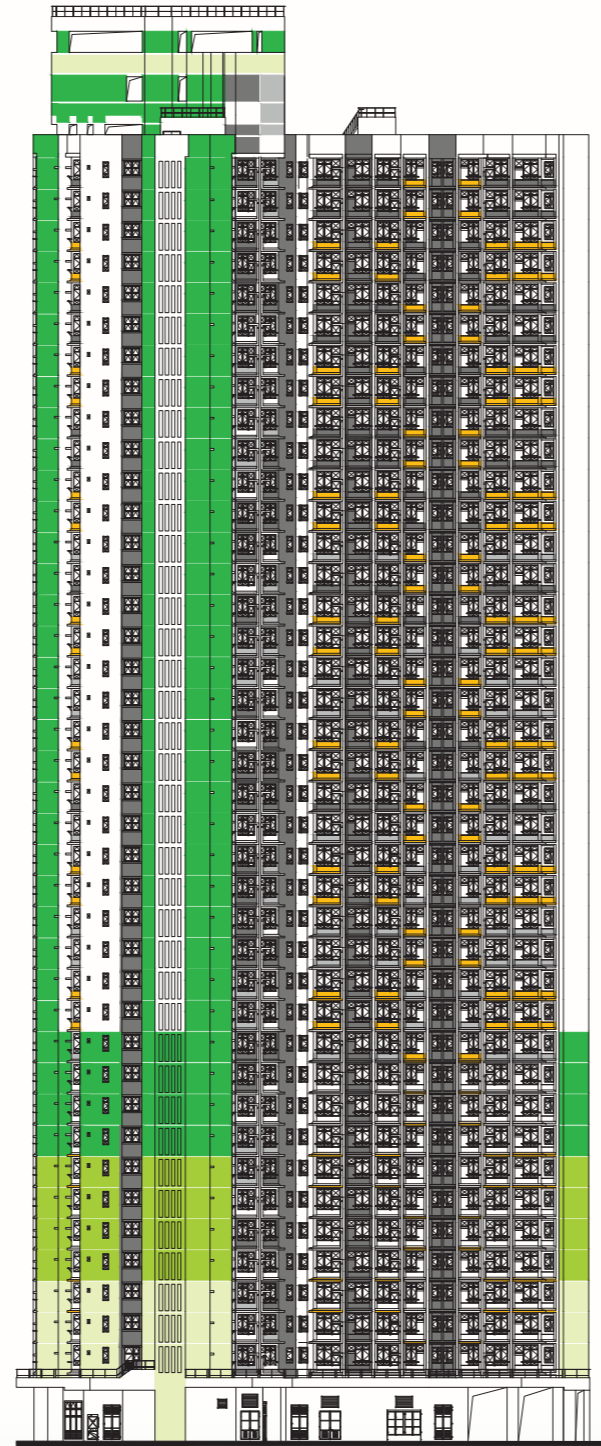


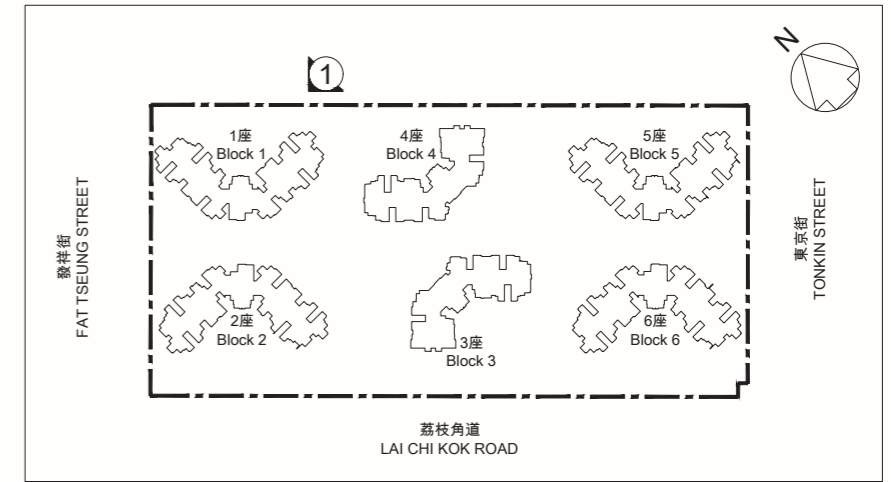
20 立面圖

Elevation Plan

1 座立面圖 Block 1 Elevation Plan



東面立面圖“1”
East Elevation Plan “1”



指示圖 KEY PLAN

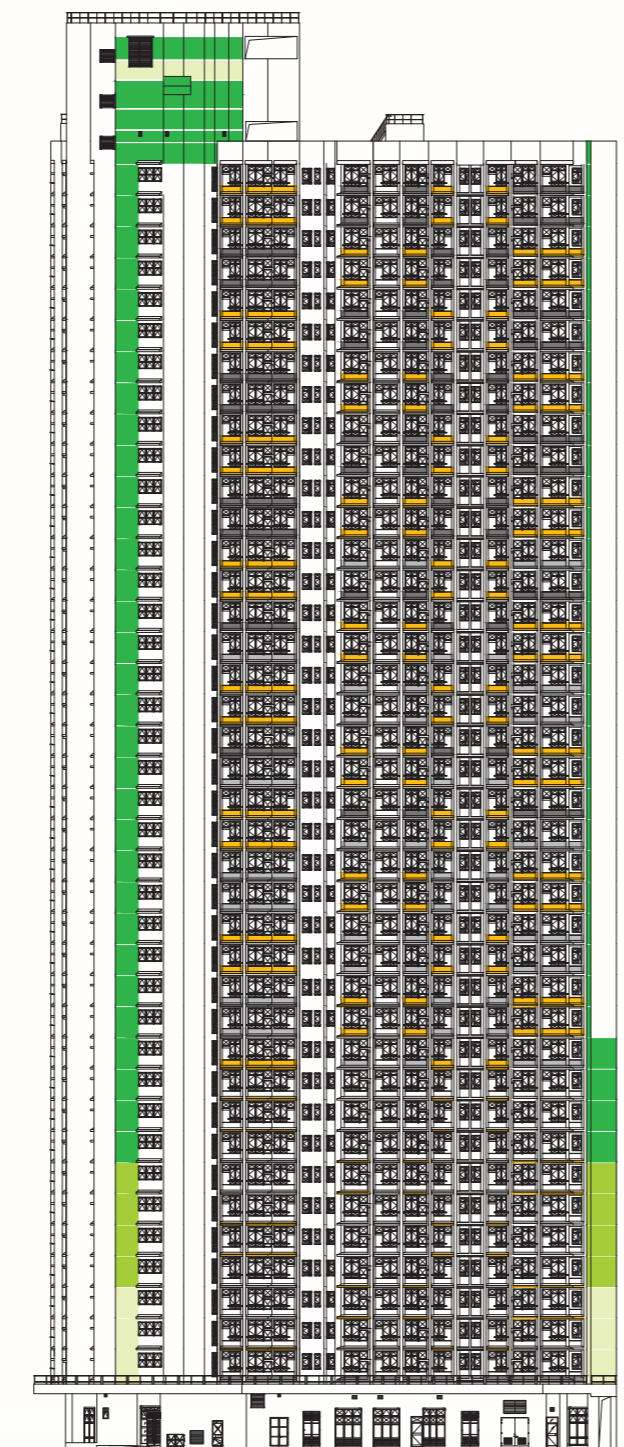
本圖所顯示的立面：

- (1) 以2019年5月29日的該項目的經批准的建築圖則為基礎擬備；及
- (2) 大致上與該項目的外觀一致。

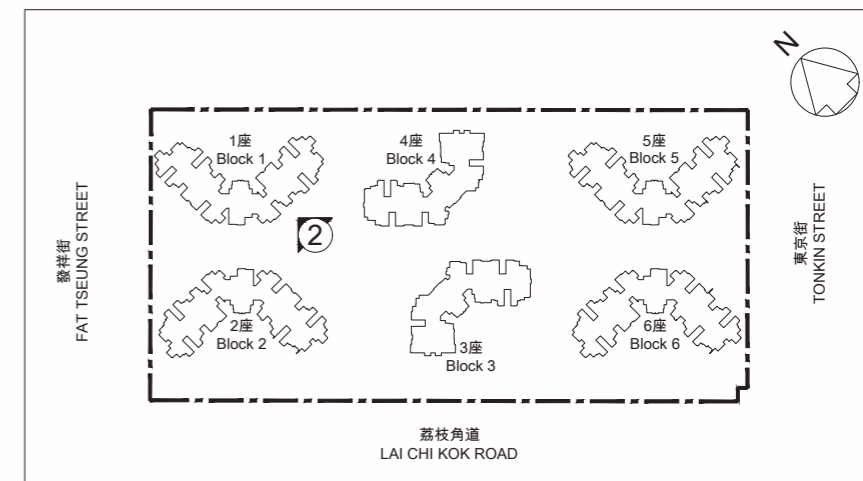
The elevation shown on this plan:

- (1) is prepared on the basis of the approved general building plans for the Development as of 29 May 2019; and
- (2) is in general accordance with the outward appearance of the Development.

1 座立面圖
Block 1 Elevation Plan



南面立面圖“2”
South Elevation Plan “2”



指示圖 KEY PLAN

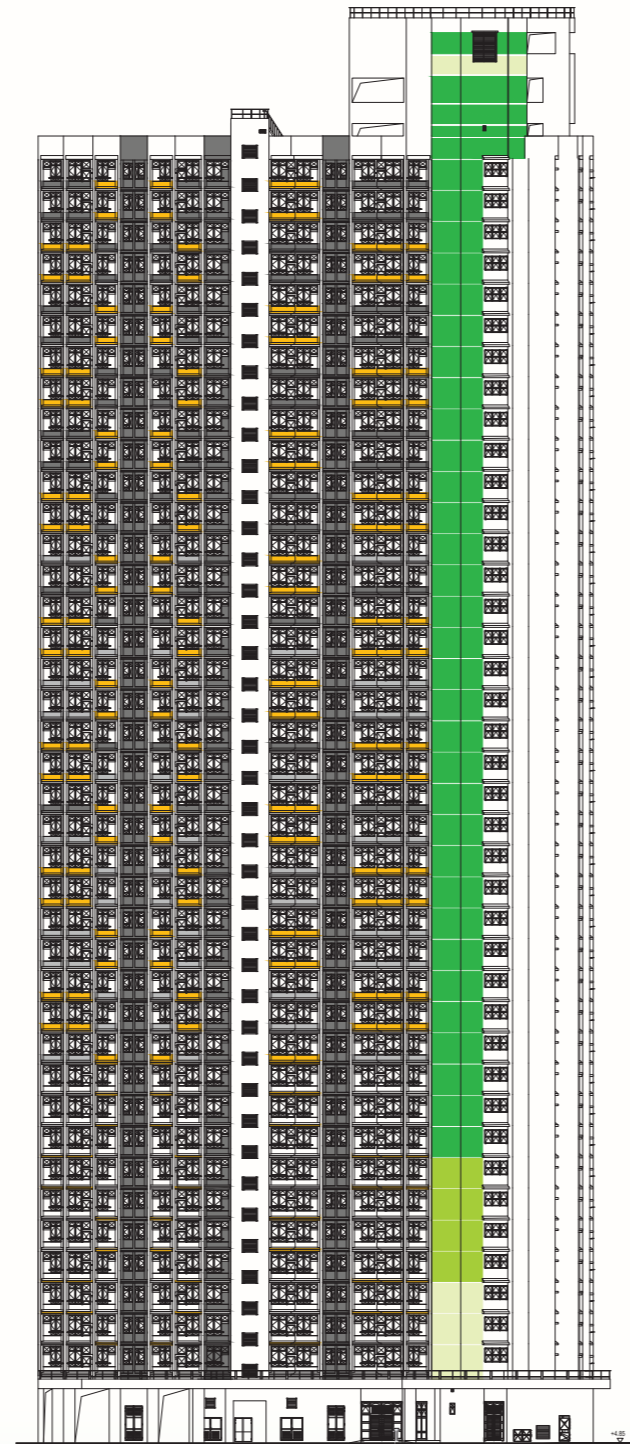
本圖所顯示的立面：

- (1) 以2019年5月29日的該項目的經批准的建築圖則為基礎擬備；及
- (2) 大致上與該項目的外觀一致。

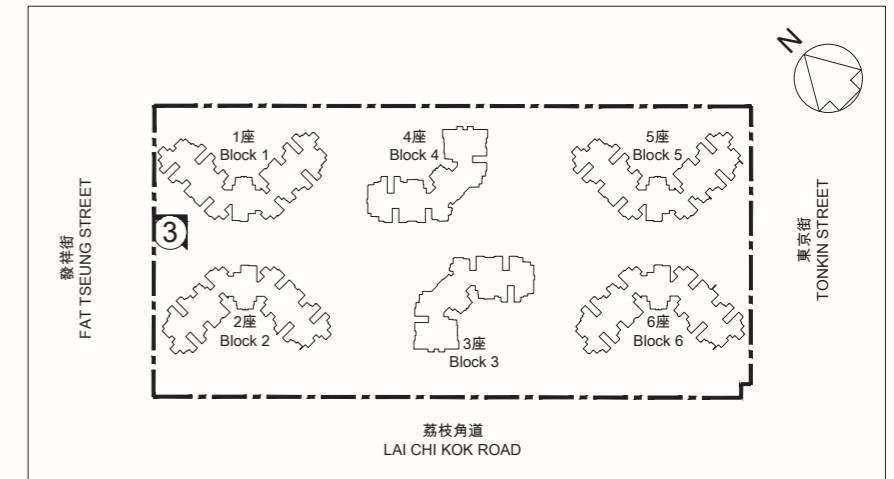
The elevation shown on this plan:

- (1) is prepared on the basis of the approved general building plans for the Development as of 29 May 2019; and
- (2) is in general accordance with the outward appearance of the Development.

1 座立面圖
Block 1 Elevation Plan



西面立面圖“3”
West Elevation Plan “3”



指示圖 KEY PLAN

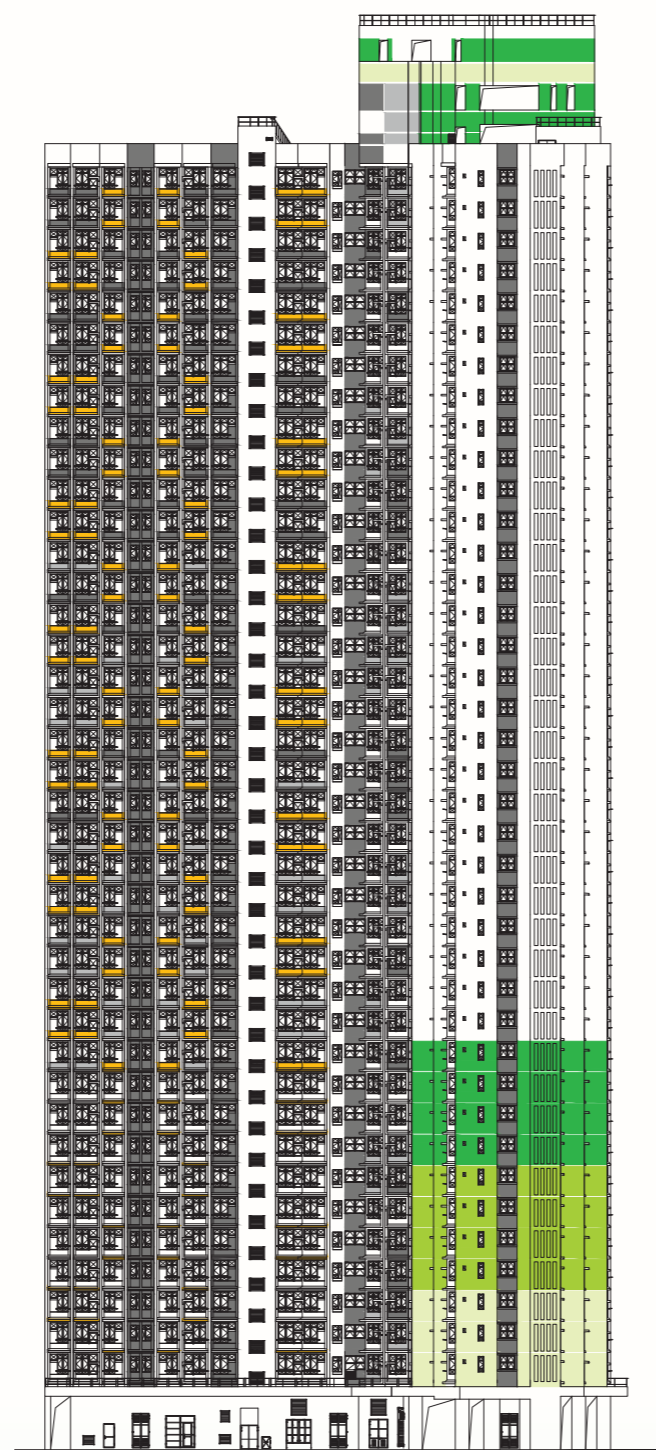
本圖所顯示的立面：

- (1) 以2019年5月29日的該項目的經批准的建築圖則為基礎擬備；及
- (2) 大致上與該項目的外觀一致。

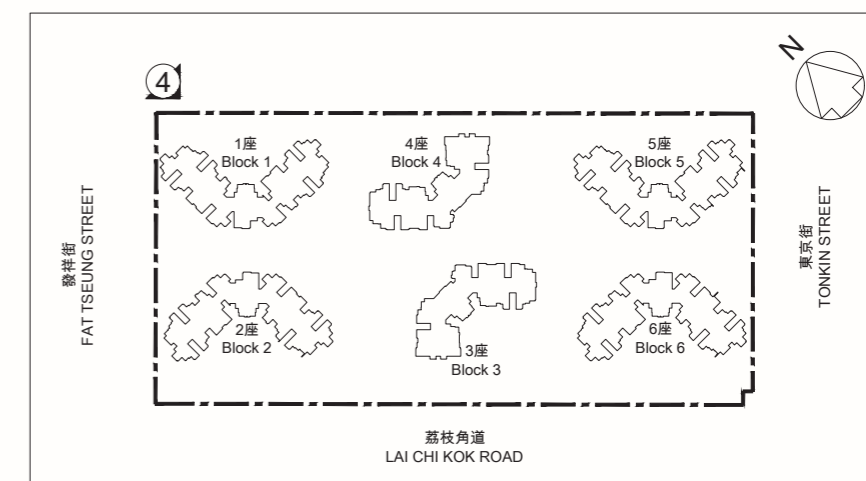
The elevation shown on this plan:

- (1) is prepared on the basis of the approved general building plans for the Development as of 29 May 2019; and
- (2) is in general accordance with the outward appearance of the Development.

1 座立面圖
Block 1 Elevation Plan



北面立面圖“4”
North Elevation Plan “4”



指示圖 KEY PLAN

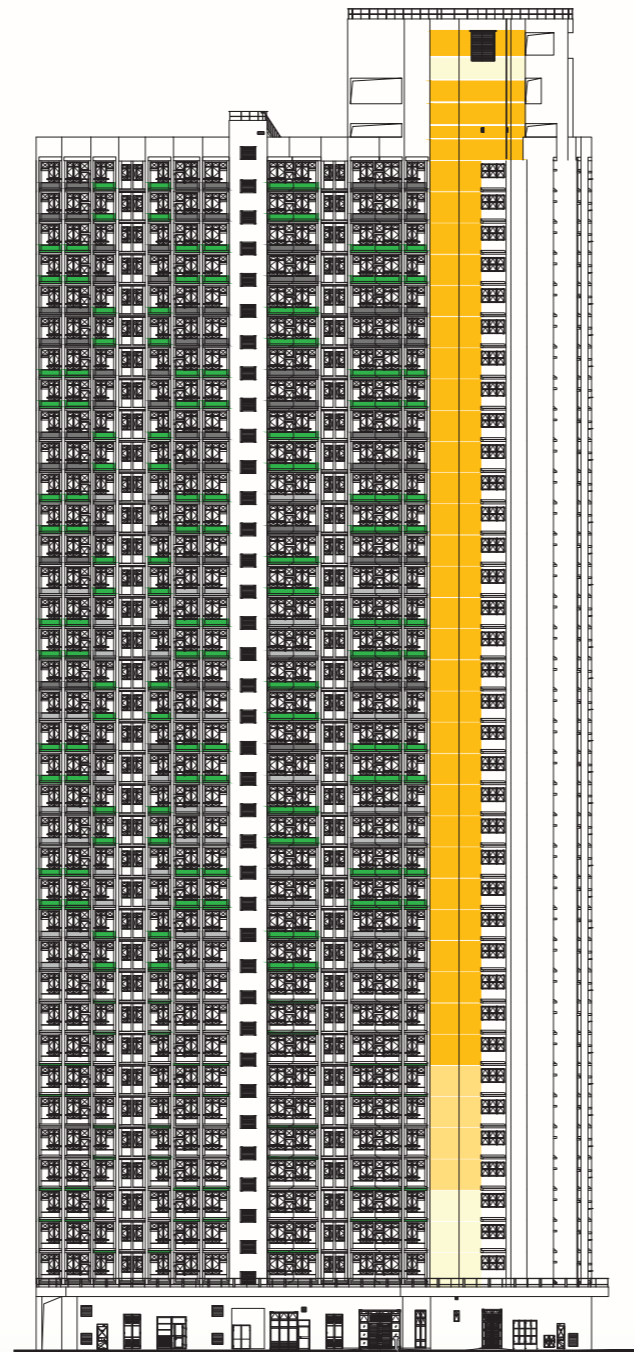
本圖所顯示的立面：

- (1) 以2019年5月29日的該項目的經批准的建築圖則為基礎擬備；及
- (2) 大致上與該項目的外觀一致。

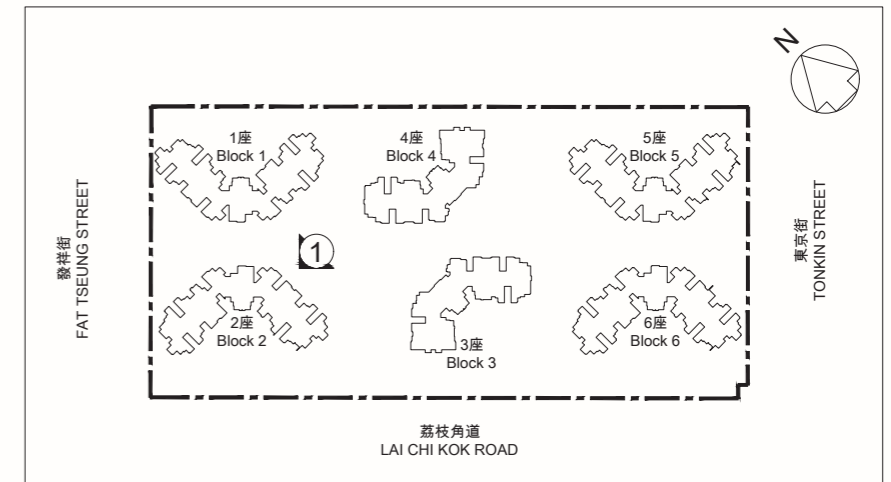
The elevation shown on this plan:

- (1) is prepared on the basis of the approved general building plans for the Development as of 29 May 2019; and
- (2) is in general accordance with the outward appearance of the Development.

2 座立面圖
Block 2 Elevation Plan



東面立面圖“1”
East Elevation Plan “1”



指示圖 KEY PLAN

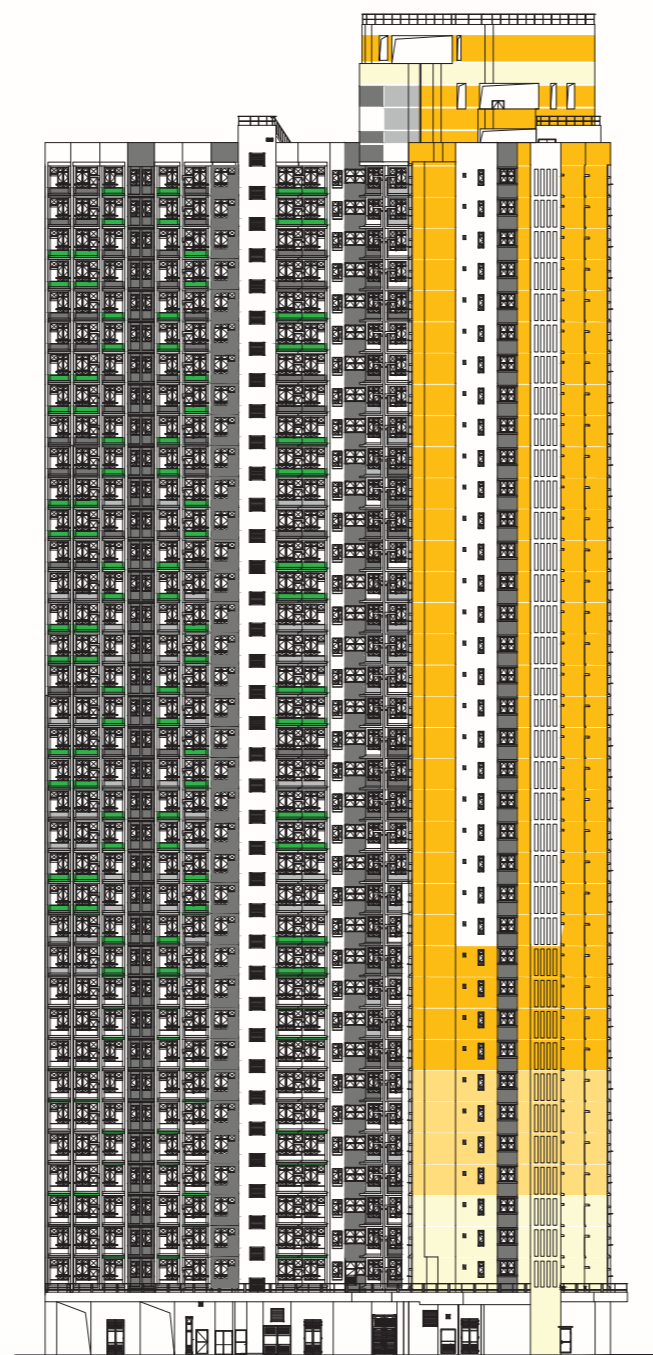
本圖所顯示的立面：

- (1) 以2019年5月29日的該項目的經批准的建築圖則為基礎擬備；及
- (2) 大致上與該項目的外觀一致。

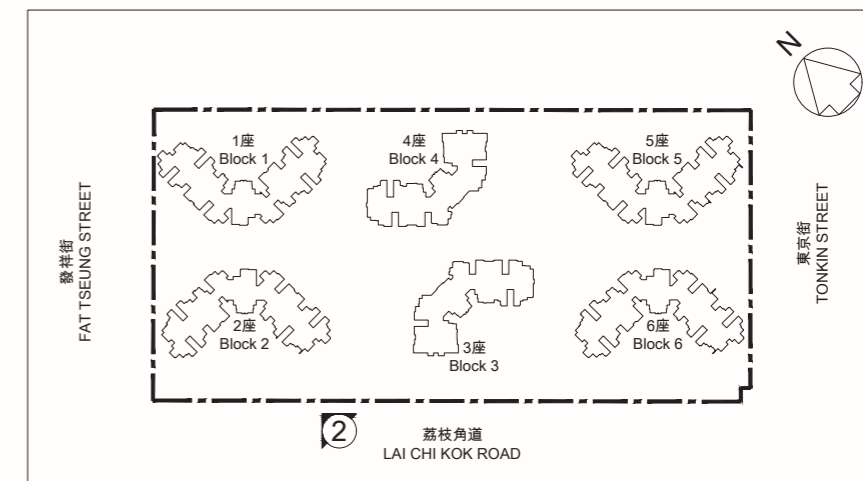
The elevation shown on this plan:

- (1) is prepared on the basis of the approved general building plans for the Development as of 29 May 2019; and
- (2) is in general accordance with the outward appearance of the Development.

2 座立面圖
Block 2 Elevation Plan



南面立面圖“2”
South Elevation Plan “2”



指示圖 KEY PLAN

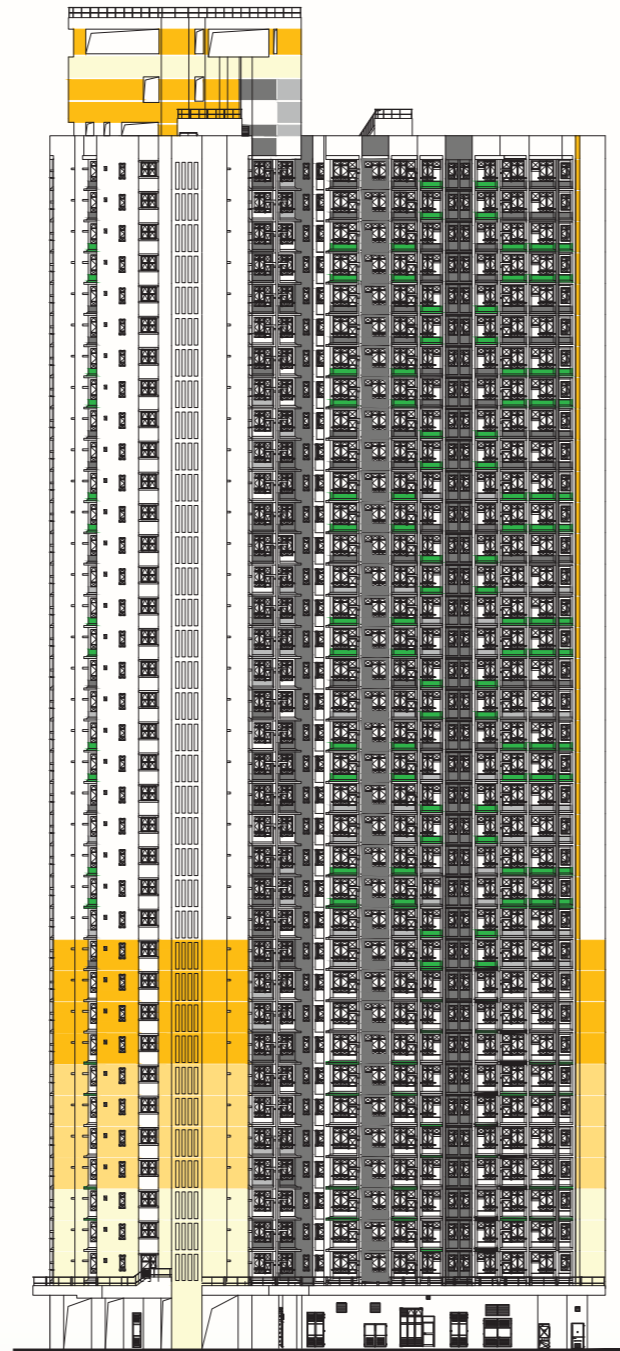
本圖所顯示的立面：

- (1) 以2019年5月29日的該項目的經批准的建築圖則為基礎擬備；及
- (2) 大致上與該項目的外觀一致。

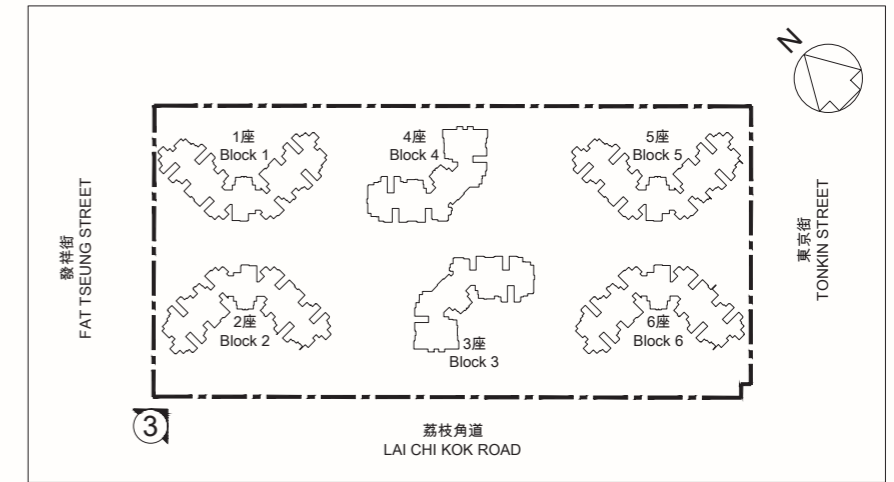
The elevation shown on this plan:

- (1) is prepared on the basis of the approved general building plans for the Development as of 29 May 2019; and
- (2) is in general accordance with the outward appearance of the Development.

2 座立面圖
Block 2 Elevation Plan



西面立面圖“3”
West Elevation Plan “3”



指示圖 KEY PLAN

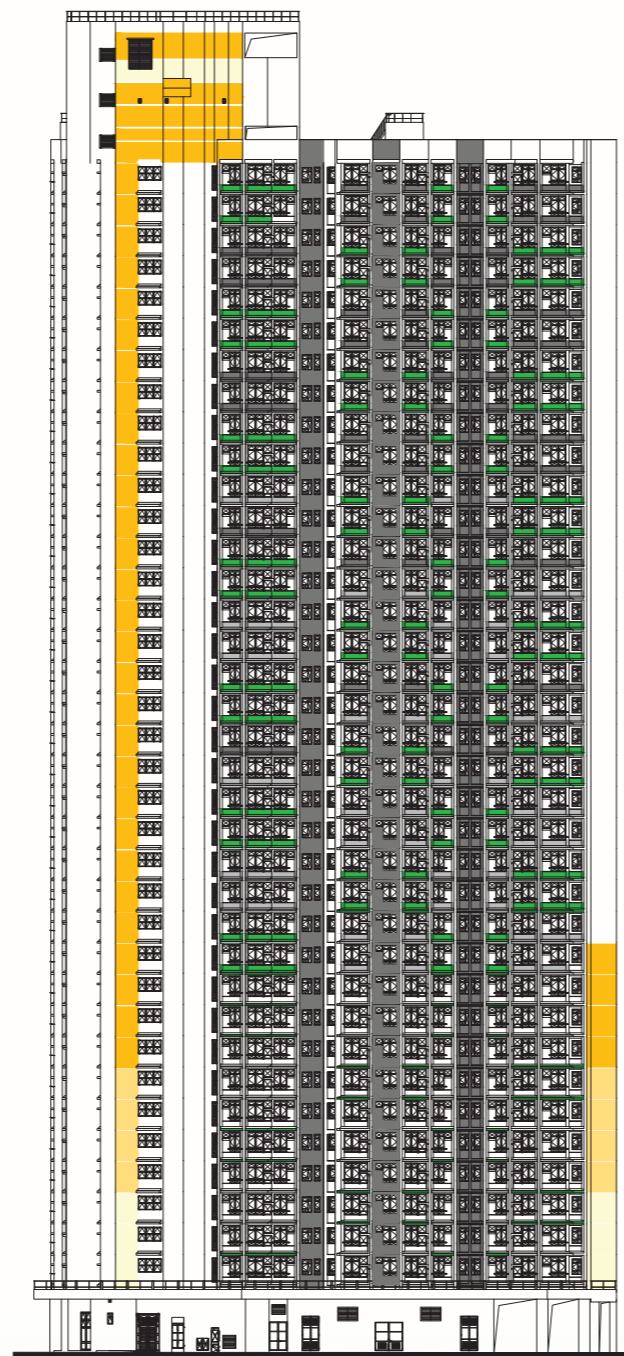
本圖所顯示的立面：

- (1) 以2019年5月29日的該項目的經批准的建築圖則為基礎擬備；及
- (2) 大致上與該項目的外觀一致。

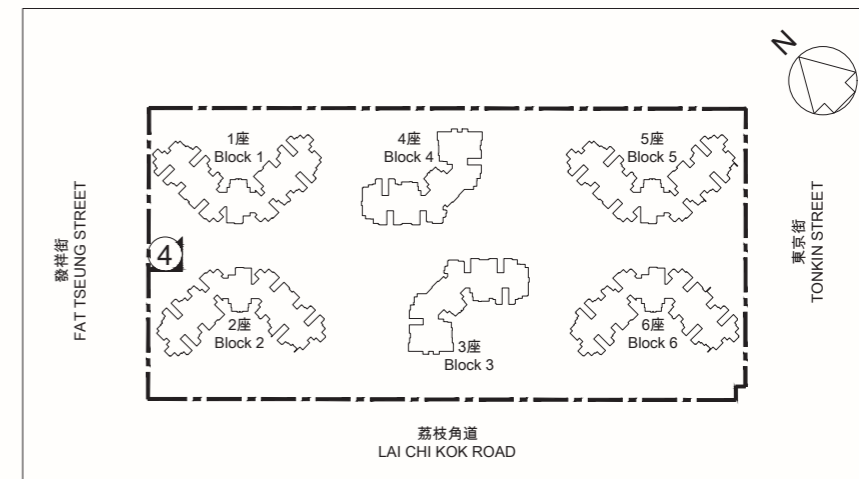
The elevation shown on this plan:

- (1) is prepared on the basis of the approved general building plans for the Development as of 29 May 2019; and
- (2) is in general accordance with the outward appearance of the Development.

2 座立面圖
Block 2 Elevation Plan



北面立面圖“4”
North Elevation Plan “4”



指示圖 KEY PLAN

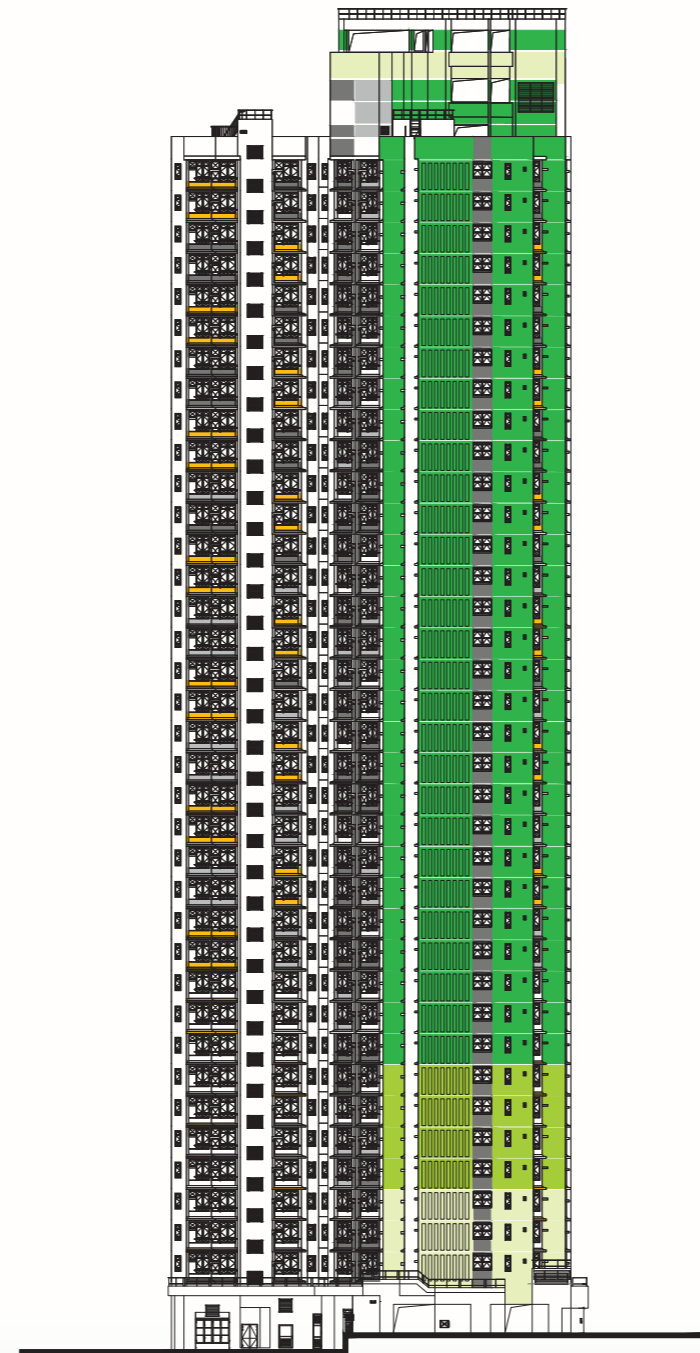
本圖所顯示的立面：

- (1) 以2019年5月29日的該項目的經批准的建築圖則為基礎擬備；及
- (2) 大致上與該項目的外觀一致。

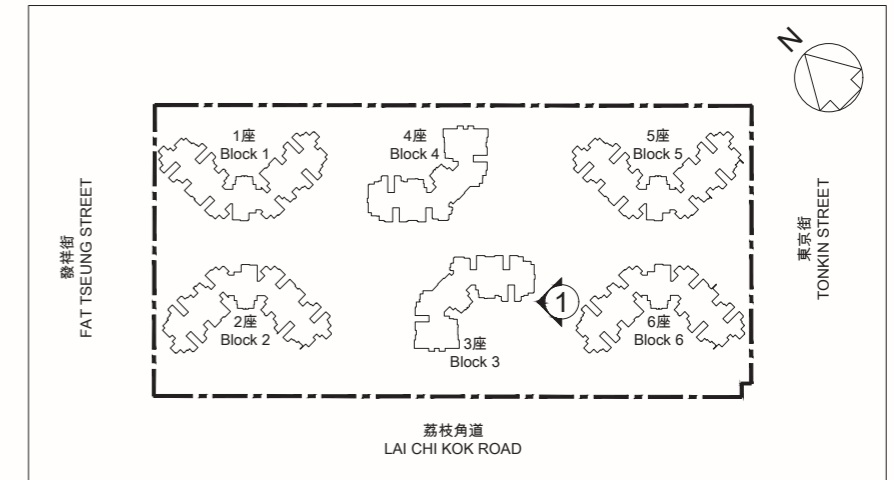
The elevation shown on this plan:

- (1) is prepared on the basis of the approved general building plans for the Development as of 29 May 2019; and
- (2) is in general accordance with the outward appearance of the Development.

3 座立面圖
Block 3 Elevation Plan



東南面立面圖“1”
South East Elevation Plan “1”



指示圖 KEY PLAN

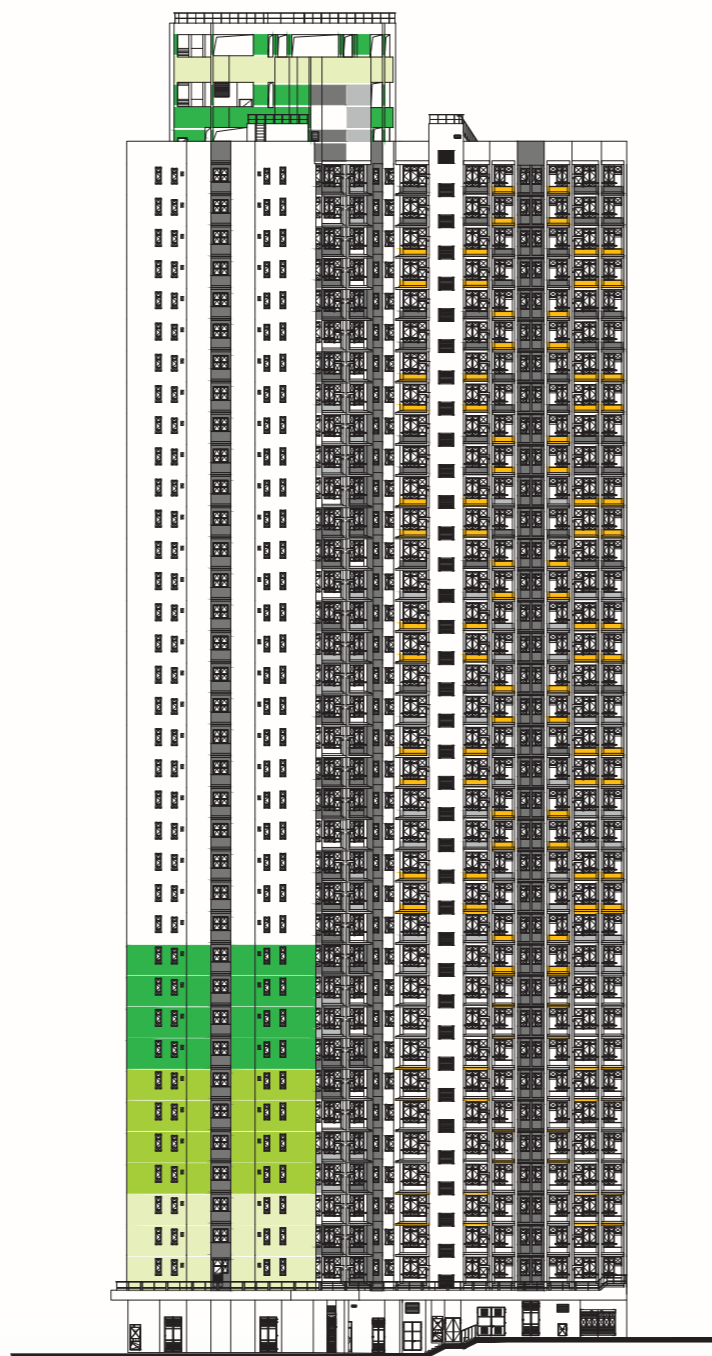
本圖所顯示的立面：

- (1) 以2019年5月29日的該項目的經批准的建築圖則為基礎擬備；及
- (2) 大致上與該項目的外觀一致。

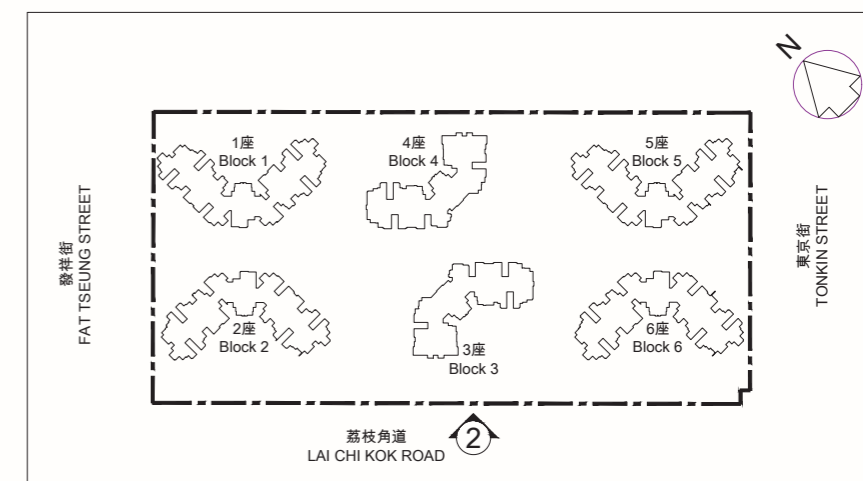
The elevation shown on this plan:

- (1) is prepared on the basis of the approved general building plans for the Development as of 29 May 2019; and
- (2) is in general accordance with the outward appearance of the Development.

3 座立面圖
Block 3 Elevation Plan



西南面立面圖“2”
South West Elevation Plan “2”



指示圖 KEY PLAN

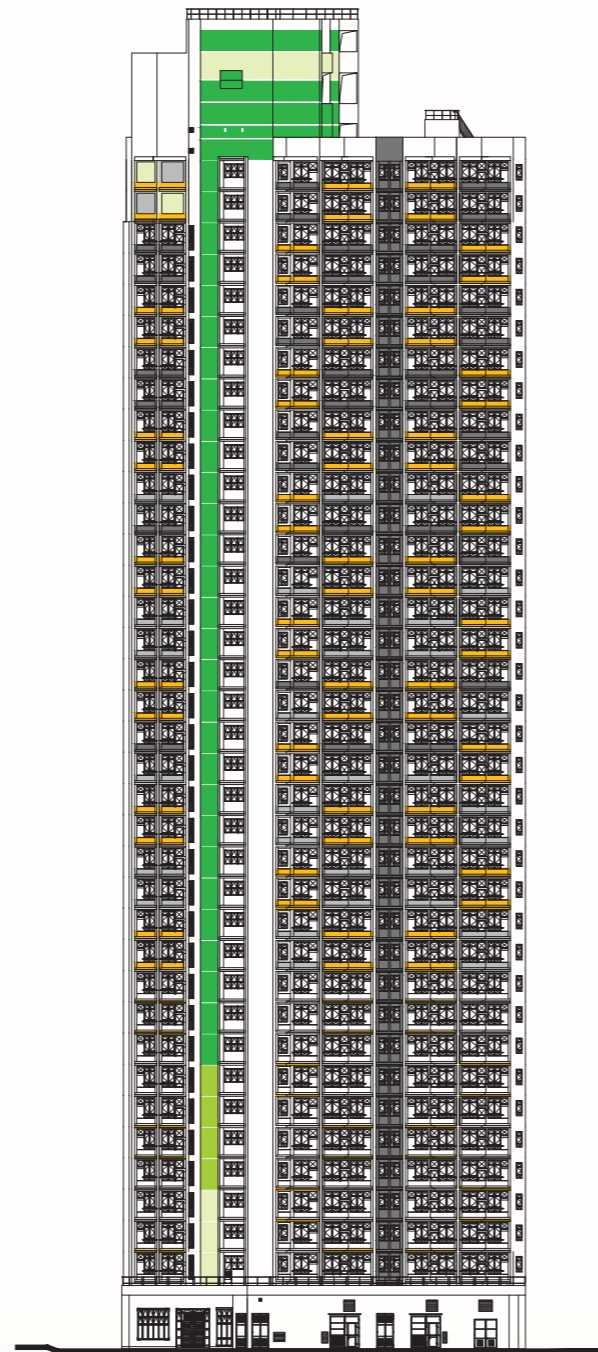
本圖所顯示的立面：

- (1) 以2019年5月29日的該項目的經批准的建築圖則為基礎擬備；及
- (2) 大致上與該項目的外觀一致。

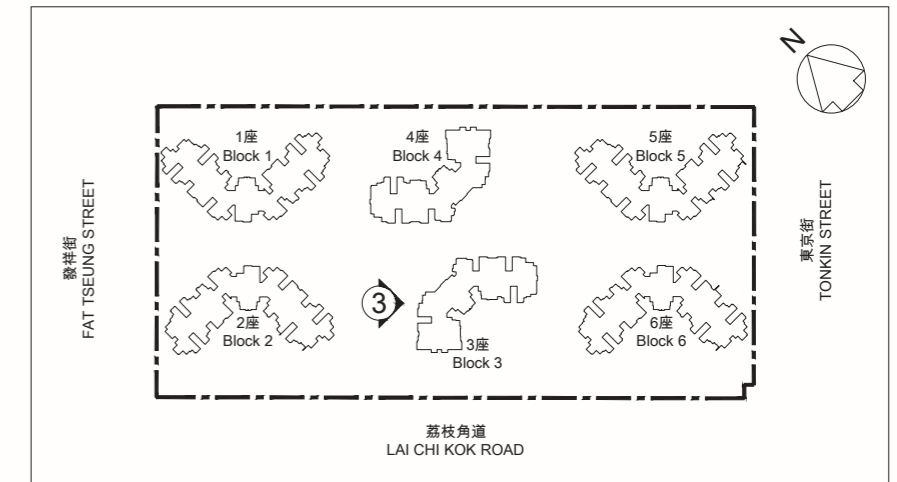
The elevation shown on this plan:

- (1) is prepared on the basis of the approved general building plans for the Development as of 29 May 2019; and
- (2) is in general accordance with the outward appearance of the Development.

3 座立面圖
Block 3 Elevation Plan



西北部面立面圖“3”
North West Elevation Plan “3”



指示圖 KEY PLAN

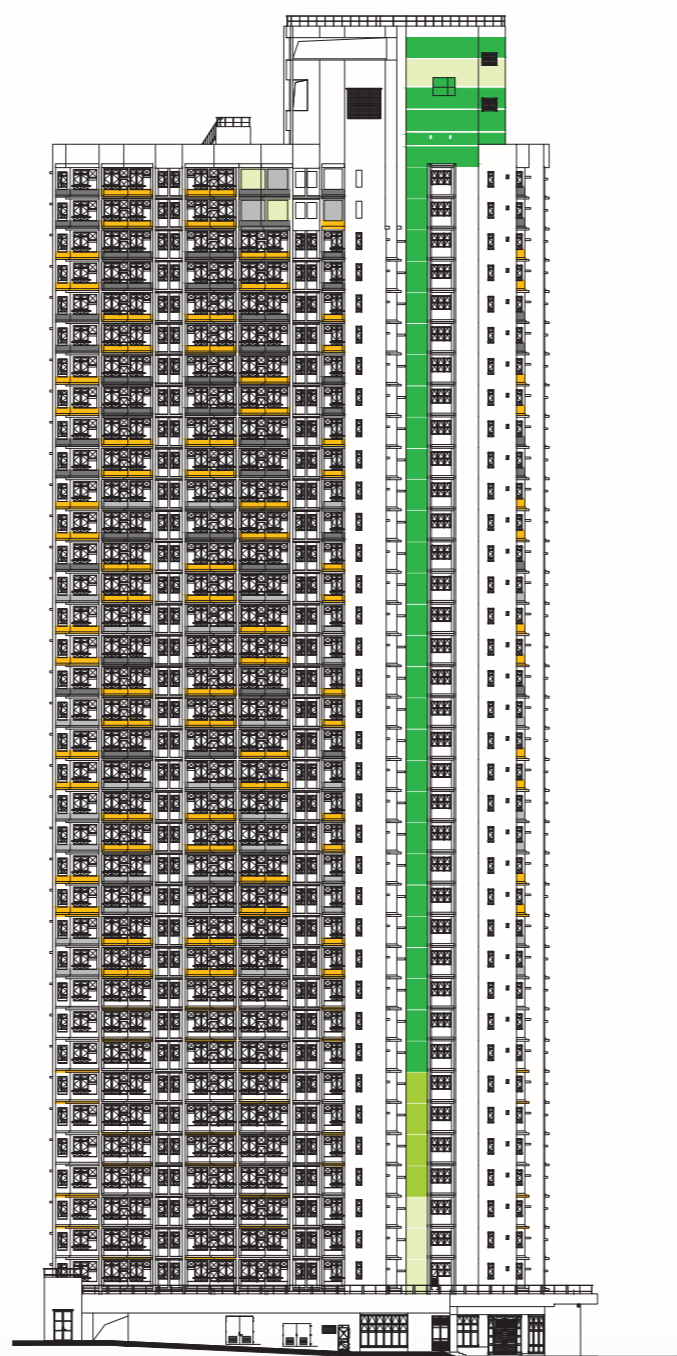
本圖所顯示的立面：

- (1) 以2019年5月29日的該項目的經批准的建築圖則為基礎擬備；及
- (2) 大致上與該項目的外觀一致。

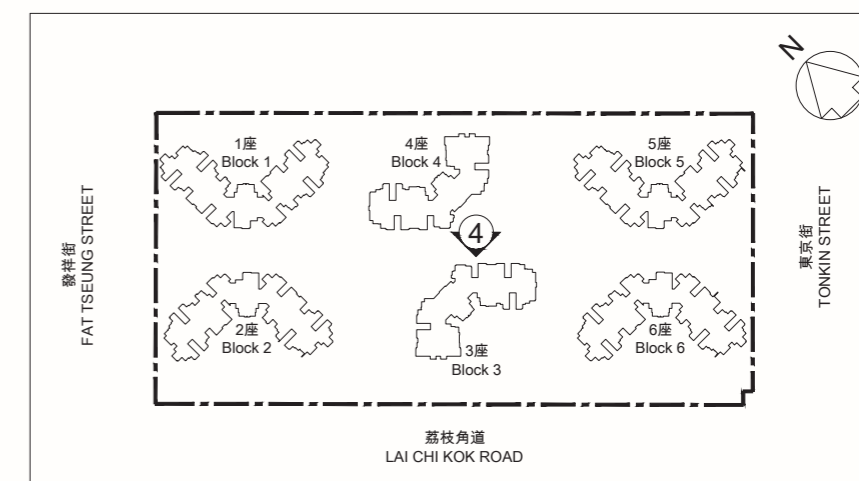
The elevation shown on this plan:

- (1) is prepared on the basis of the approved general building plans for the Development as of 29 May 2019; and
- (2) is in general accordance with the outward appearance of the Development.

3 座立面圖
Block 3 Elevation Plan



東北面立面圖“4”
North East Elevation Plan “4”



指示圖 KEY PLAN

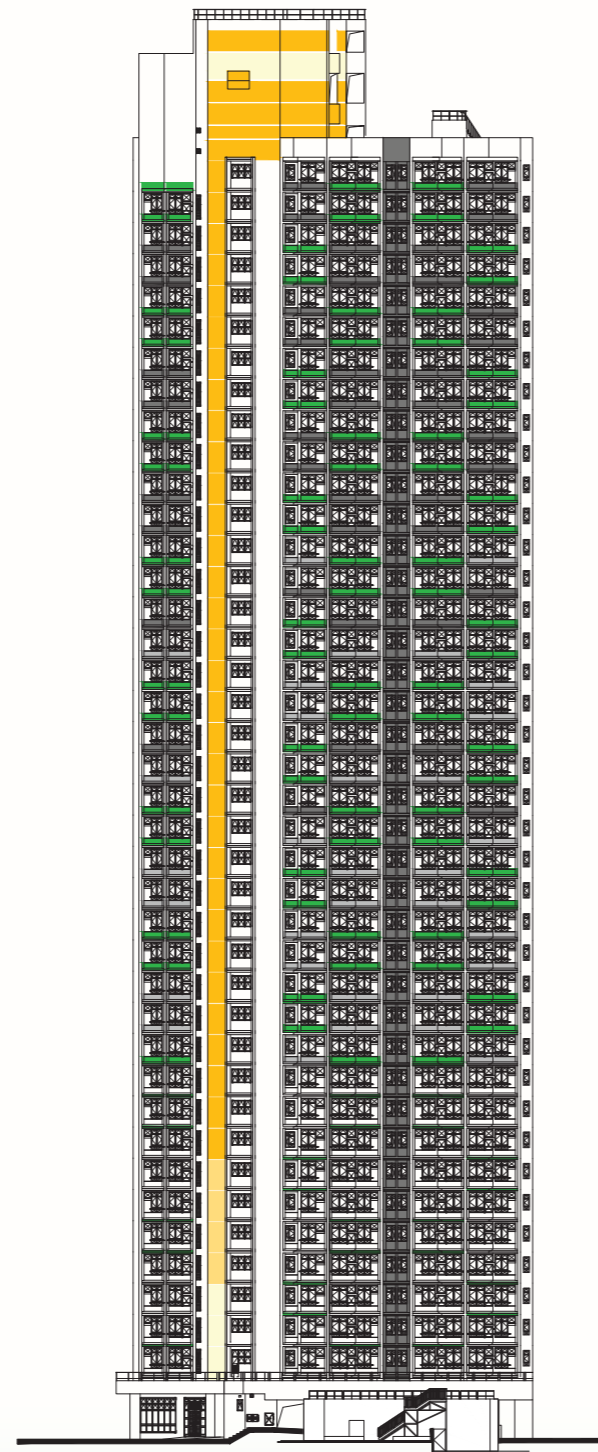
本圖所顯示的立面：

- (1) 以2019年5月29日的該項目的經批准的建築圖則為基礎擬備；及
- (2) 大致上與該項目的外觀一致。

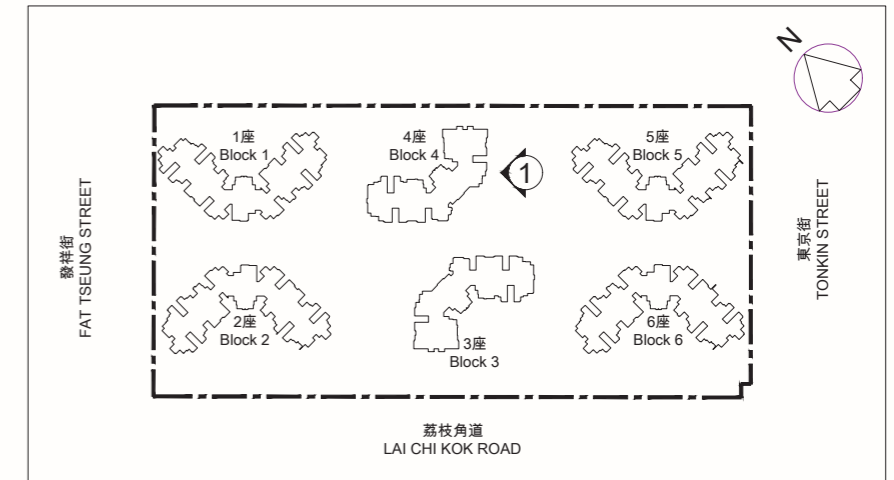
The elevation shown on this plan:

- (1) is prepared on the basis of the approved general building plans for the Development as of 29 May 2019; and
- (2) is in general accordance with the outward appearance of the Development.

4 座立面圖
Block 4 Elevation Plan



東南面立面圖“1”
South East Elevation Plan “1”



指示圖 KEY PLAN

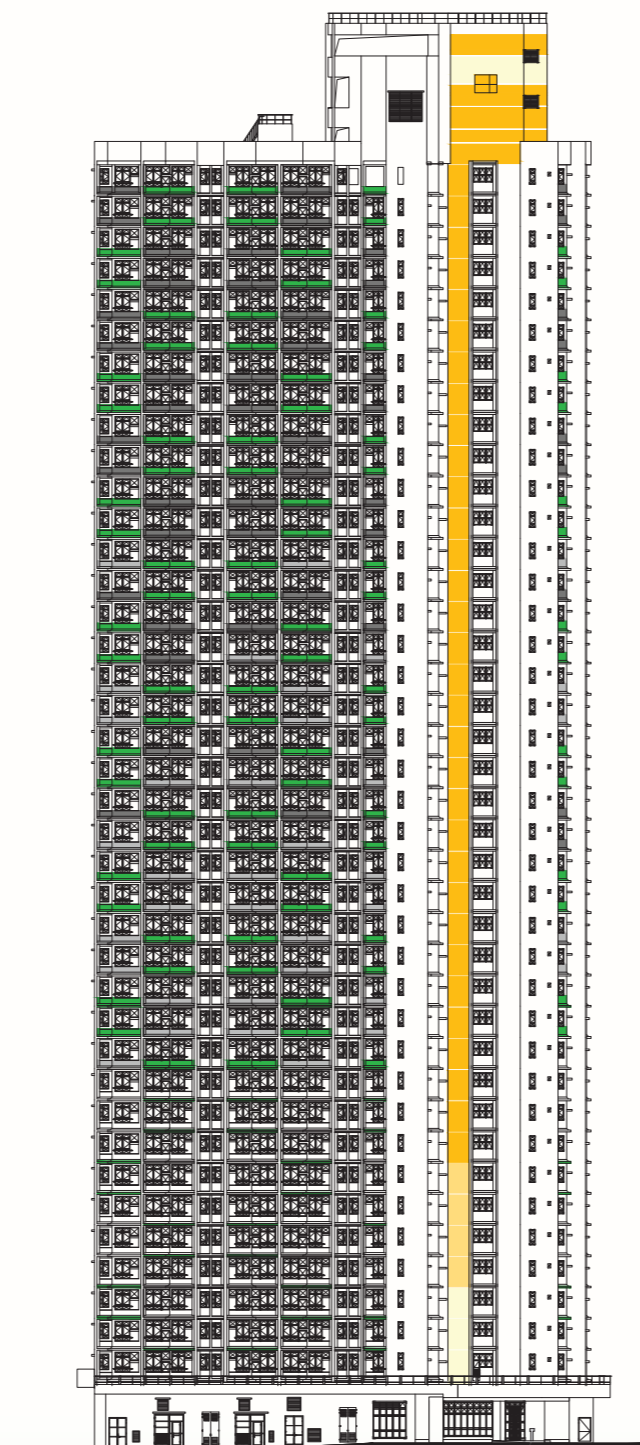
本圖所顯示的立面：

- (1) 以2019年5月29日的該項目的經批准的建築圖則為基礎擬備；及
- (2) 大致上與該項目的外觀一致。

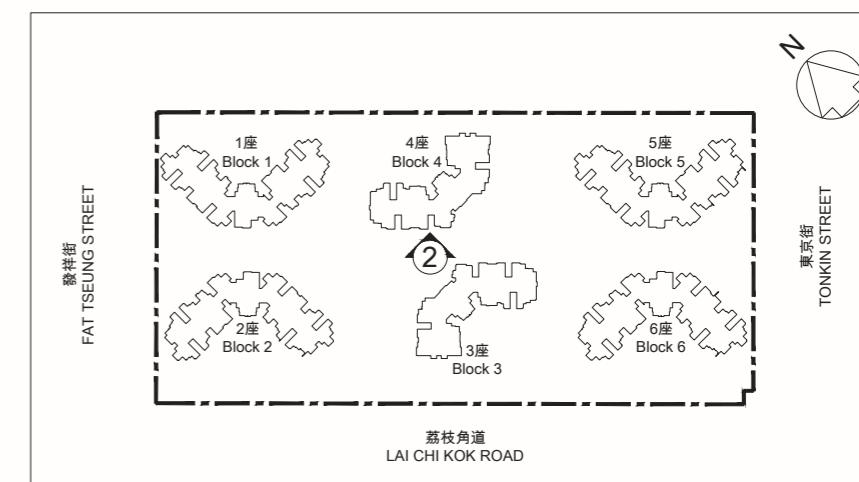
The elevation shown on this plan:

- (1) is prepared on the basis of the approved general building plans for the Development as of 29 May 2019; and
- (2) is in general accordance with the outward appearance of the Development.

4 座立面圖
Block 4 Elevation Plan



西南面立面圖“2”
South West Elevation Plan “2”



指示圖 KEY PLAN

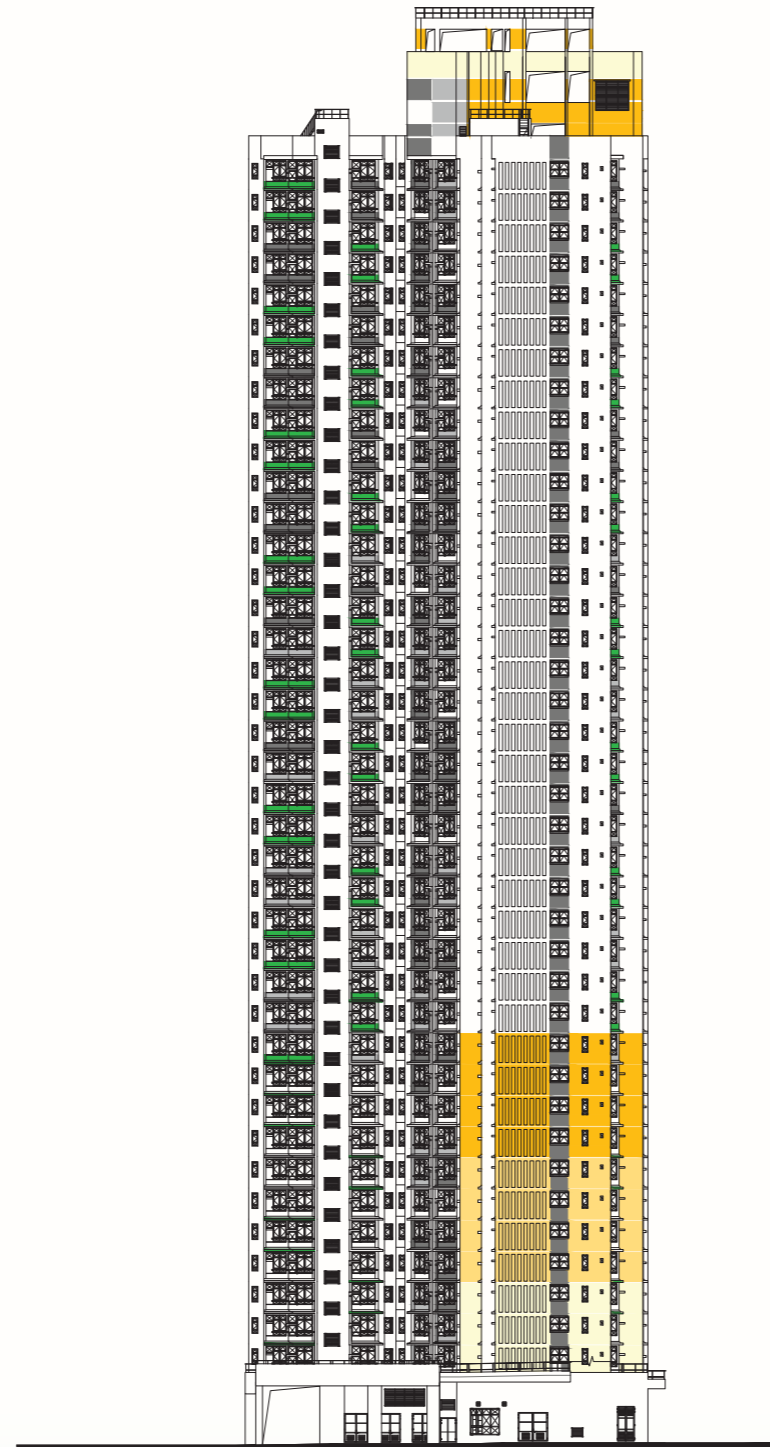
本圖所顯示的立面：

- (1) 以2019年5月29日的該項目的經批准的建築圖則為基礎擬備；及
- (2) 大致上與該項目的外觀一致。

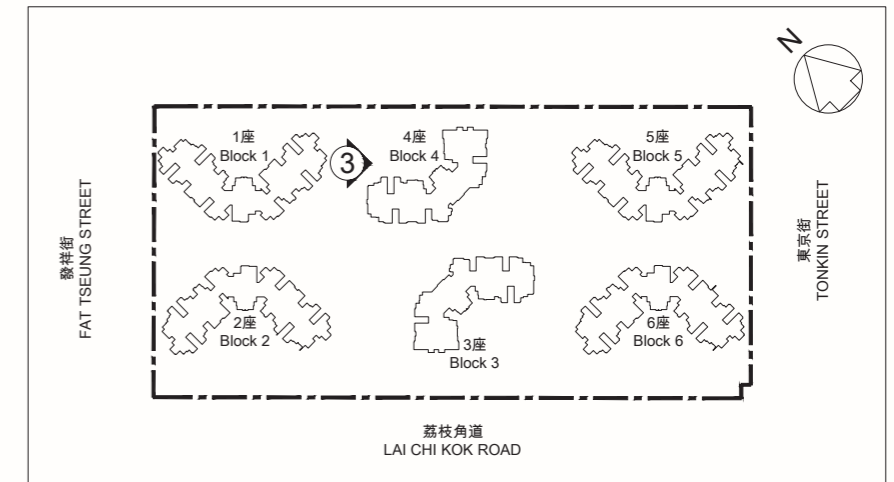
The elevation shown on this plan:

- (1) is prepared on the basis of the approved general building plans for the Development as of 29 May 2019; and
- (2) is in general accordance with the outward appearance of the Development.

4 座立面圖
Block 4 Elevation Plan



西北部面立面圖“3”
North West Elevation Plan “3”



指示圖 KEY PLAN

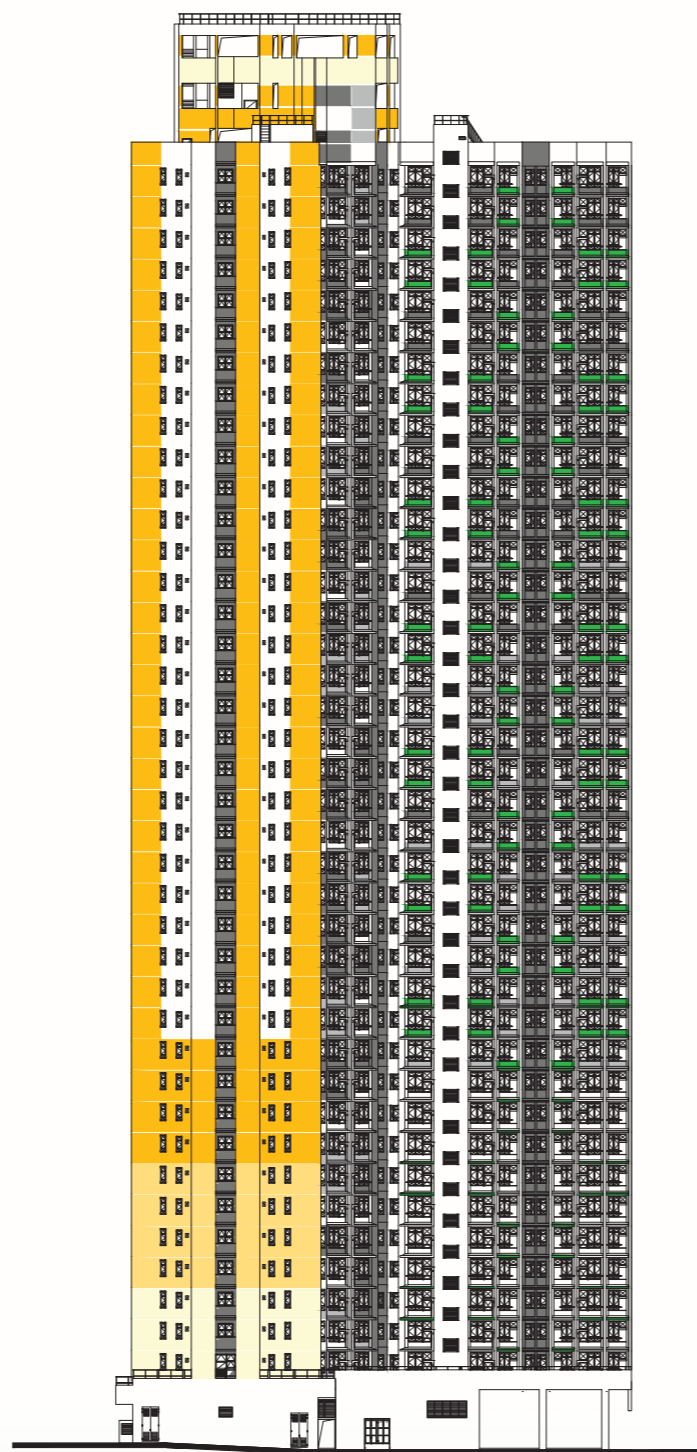
本圖所顯示的立面：

- (1) 以2019年5月29日的該項目的經批准的建築圖則為基礎擬備；及
- (2) 大致上與該項目的外觀一致。

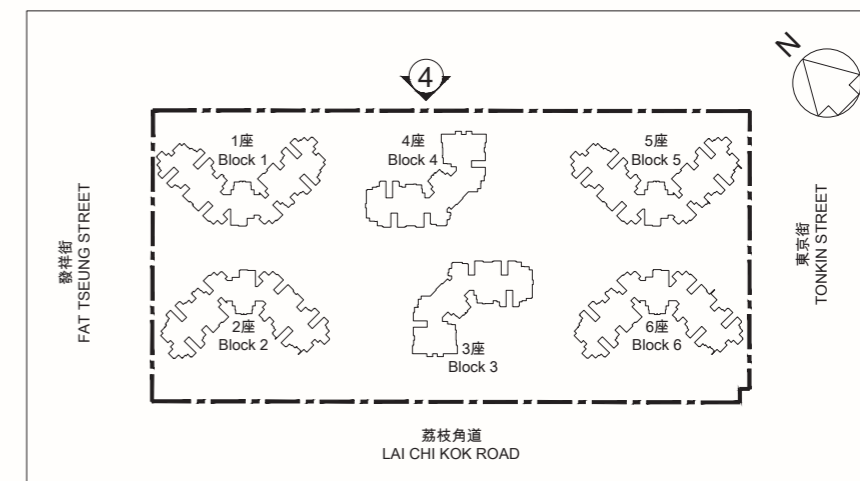
The elevation shown on this plan:

- (1) is prepared on the basis of the approved general building plans for the Development as of 29 May 2019; and
- (2) is in general accordance with the outward appearance of the Development.

4 座立面圖
Block 4 Elevation Plan



東北面立面圖“4”
North East Elevation Plan “4”



指示圖 KEY PLAN

本圖所顯示的立面：

- (1) 以2019年5月29日的該項目的經批准的建築圖則為基礎擬備；及
- (2) 大致上與該項目的外觀一致。

The elevation shown on this plan:

- (1) is prepared on the basis of the approved general building plans for the Development as of 29 May 2019; and
- (2) is in general accordance with the outward appearance of the Development.

		有上蓋遮蓋 Covered	無上蓋遮蓋 Uncovered	總面積 Total Area
住客會所 (包括供住客使用的任何康樂設施) Residents' clubhouse (including any recreational facilities for residents' use)	平方米 sq.m.	不適用 Not applicable	不適用 Not applicable	不適用 Not applicable
	平方呎 sq.ft.	不適用 Not applicable	不適用 Not applicable	不適用 Not applicable
位於發展項目中的建築物的天台或在天台和最低一層住宅樓層之間的任何一層的、供住客使用的公用花園或遊樂地方 (不論是稱為公用空中花園或有其他名稱) Communal garden or play area for residents' use on the roof, or on any floor between the roof and the lowest residential floor, of a building in the Development (whether known as a communal sky garden or otherwise)	平方米 sq.m.	不適用 Not applicable	不適用 Not applicable	不適用 Not applicable
	平方呎 sq.ft.	不適用 Not applicable	不適用 Not applicable	不適用 Not applicable
位於發展項目中的建築物的最低一層住宅樓層以下的、供住客使用的公用花園或遊樂地方 (不論是稱為有蓋及園景的遊樂場或有其他名稱) Communal garden or play area for residents' use below the lowest residential floor of a building in the Development (whether known as a covered and landscaped play area or otherwise)	平方米 sq.m.	381.7	1,632.1	2,013.8
	平方呎 sq.ft.	4,109	17,568	21,677

註： 上述以平方呎列明之面積是以1平方米=10.764平方呎換算，並四捨五入至整數平方呎。

Note: The areas as specified above in square feet are converted at a rate of 1 square metre=10.764 square feet and rounded to the nearest whole square foot.