



啟鑽苑

Kai Chuen Court

實用面積
SALEABLE AREA

44.5平方米sq.m. (479平方呎sq.ft.)

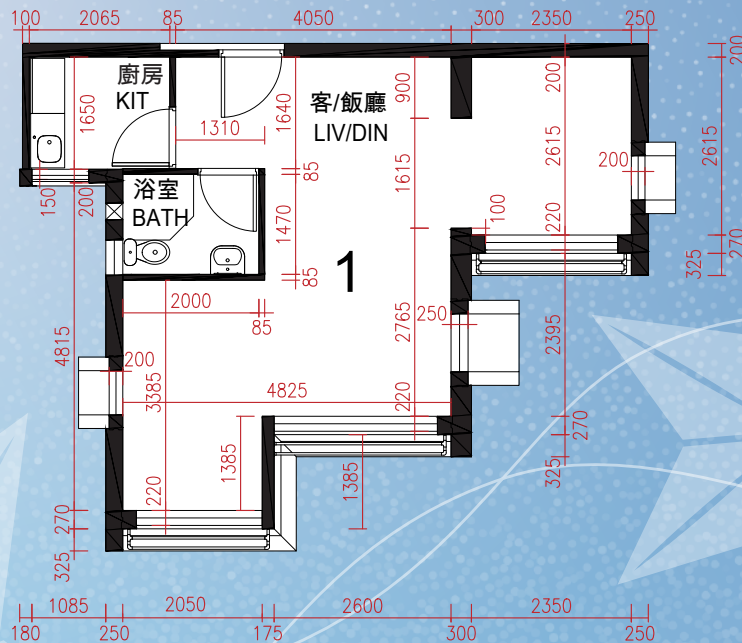
BLOCK 座	FLOOR 樓層	FLAT 室
5	2/F - 37/F	1

註：

1. 上述實用面積是按照《一手住宅物業銷售條例》第8條計算得出。
2. 上述以平方呎列明之面積是以 1 平方米=10.764平方呎換算，並四捨五入至整數平方呎。

Notes:

1. The saleable areas as stated above are calculated in accordance with section 8 of the Residential Properties (First-hand Sales) Ordinance.
2. The areas as specified above in square feet are converted at a rate of 1 square metre = 10.764 square feet and rounded to the nearest whole square foot.



註：平面圖所列之數字為以毫米標示之建築結構尺寸。

Note: The dimensions on the floor plan are all structural dimensions in millimetre.