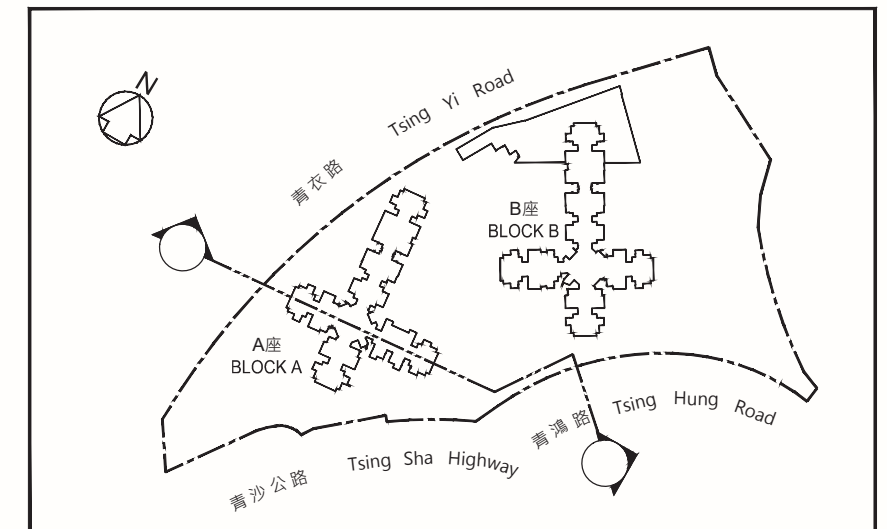
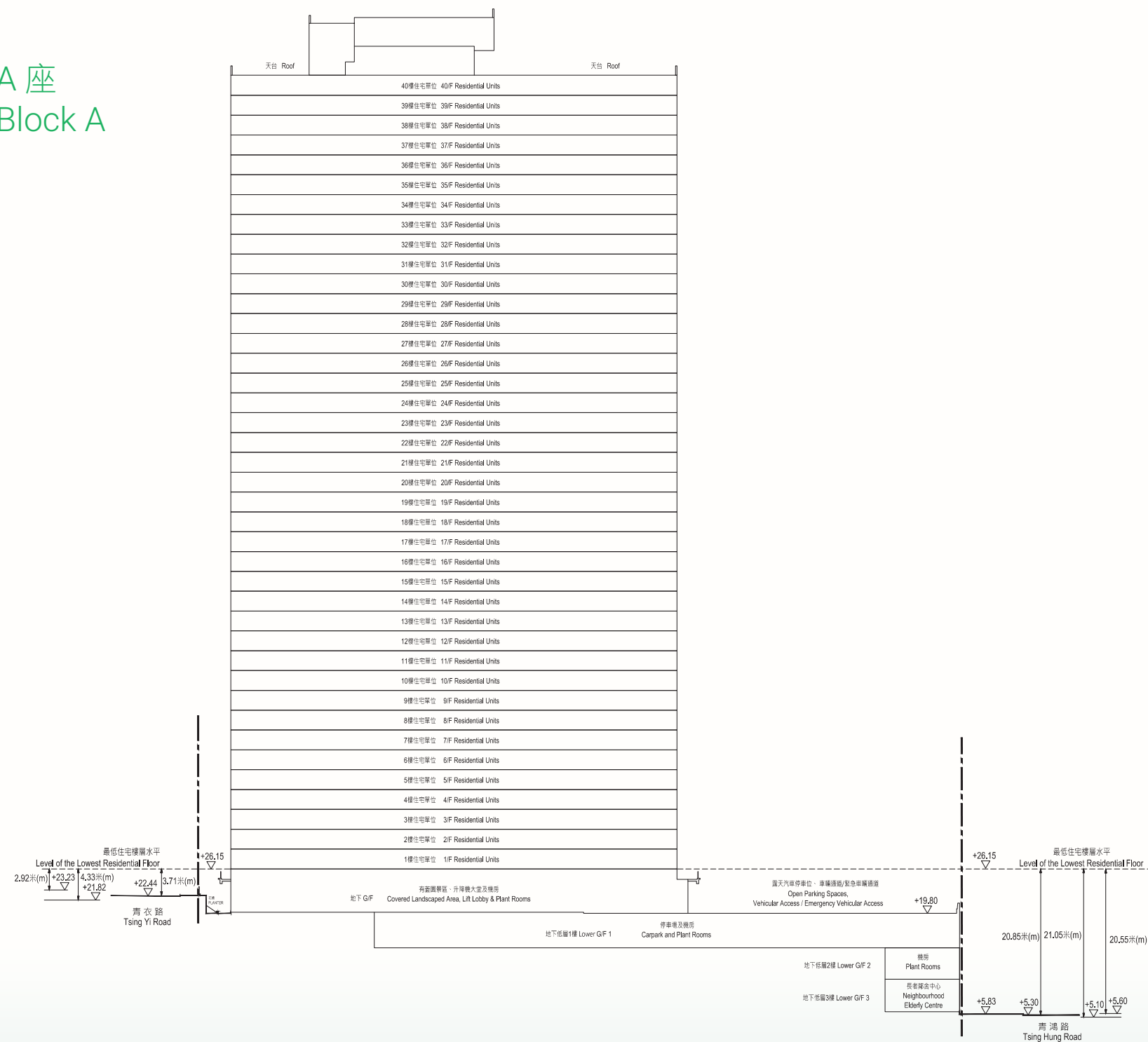


19 發展項目中的建築物的橫截面圖

Cross-section Plan of Building in the Development

A 座 Block A



指示圖 KEY PLAN

- 毗連建築物的一段青衣路為香港主水平基準以上21.82米至23.23米。
The part of Tsing Yi Road adjacent to the building is 21.82 metres to 23.23 metres above the Hong Kong Principal Datum.
- 毗連建築物的一段青鴻路為香港主水平基準以上5.10米至5.60米。
The part of Tsing Hung Road adjacent to the building is 5.10 metres to 5.60 metres above the Hong Kong Principal Datum.

圖例 NOTATION

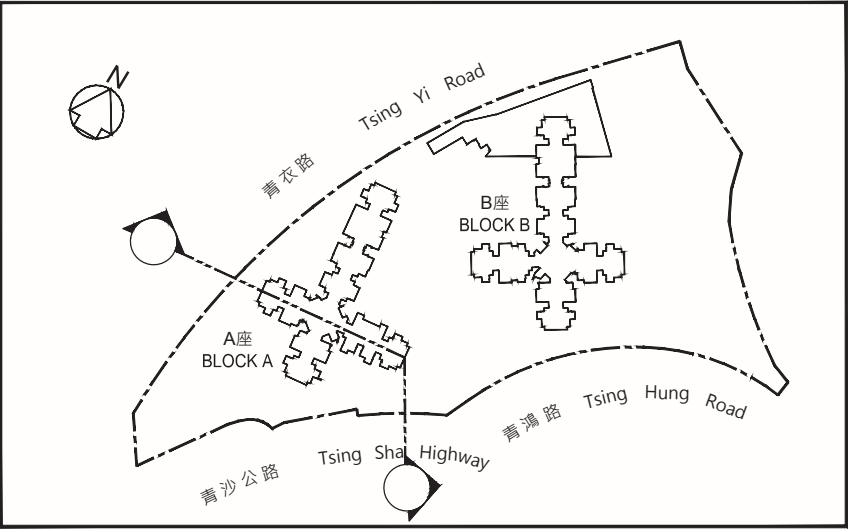
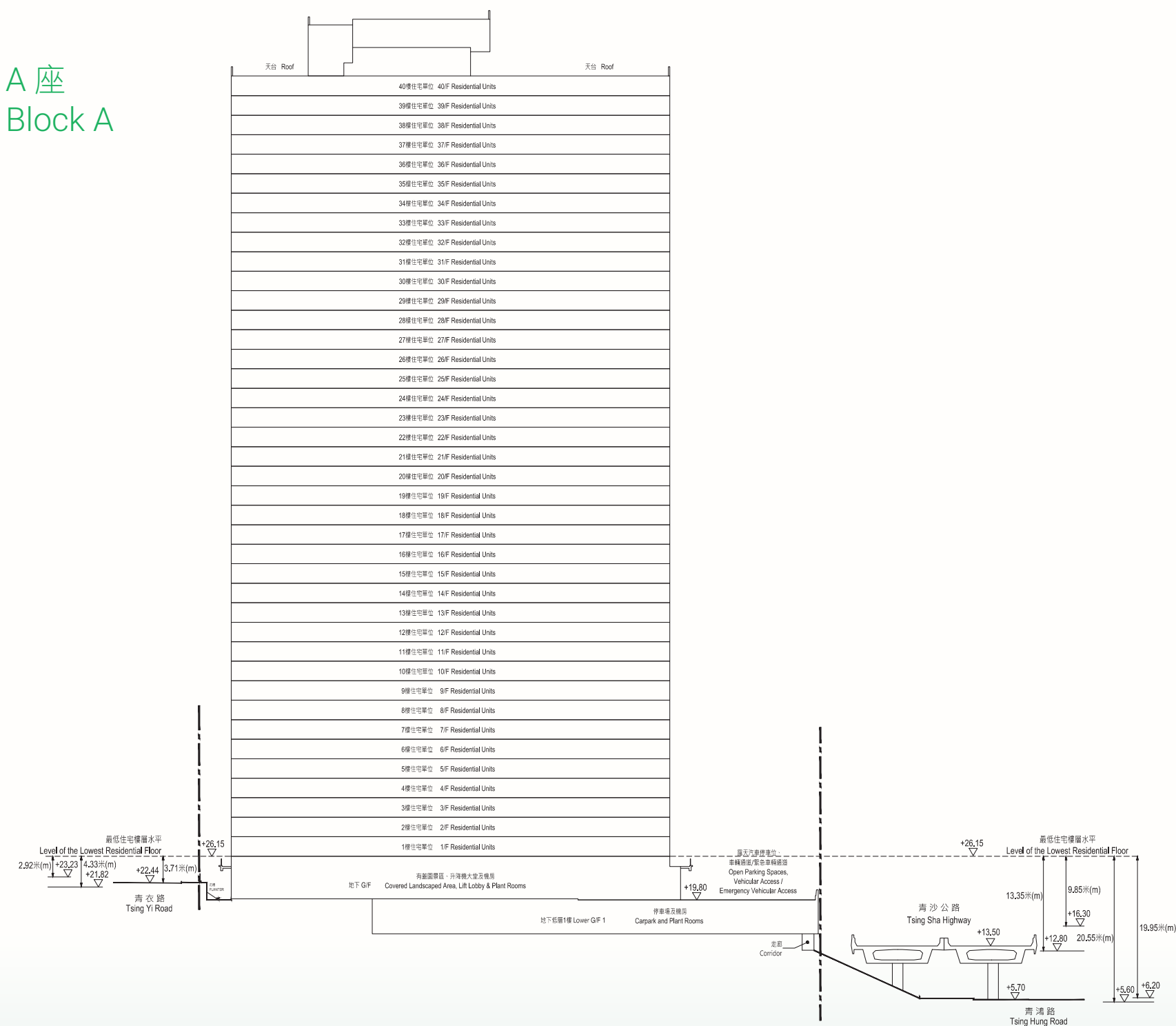
——	發展項目的邊界	Boundary Line of the Development
▽	香港主水平基準上高度(米)	Height (in metres) above the Hong Kong Principal Datum

發展項目中的建築物的橫截面圖

Cross-section Plan of Building in the Development

A 座

Block A



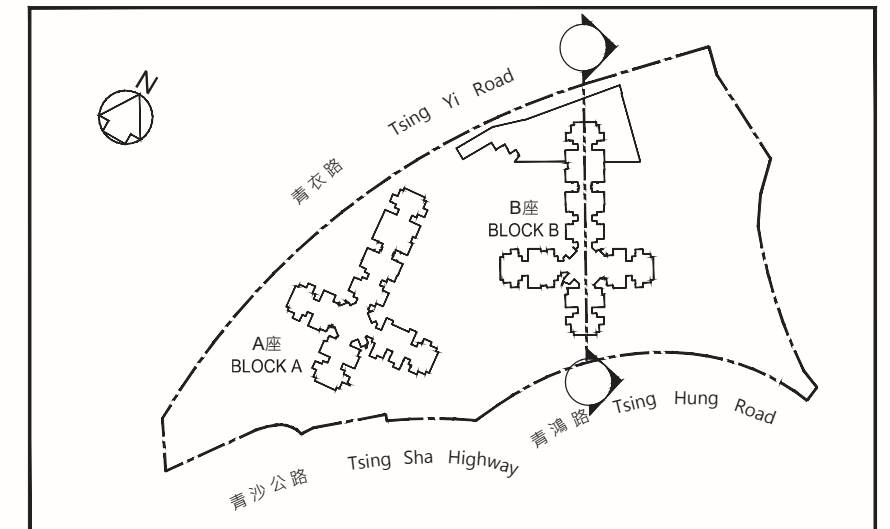
指示圖 KEY PLAN

- 毗連建築物的一段青衣路為香港主水平基準以上21.82米至23.23米。
The part of Tsing Yi Road adjacent to the building is 21.82 metres to 23.23 metres above the Hong Kong Principal Datum.
- 毗連建築物的一段青鴻路為香港主水平基準以上5.60米至6.20米。
The part of Tsing Hung Road adjacent to the building is 5.60 metres to 6.20 metres above the Hong Kong Principal Datum.
- 毗連建築物的一段青沙公路為香港主水平基準以上12.80米至16.30米。
The part of Tsing Sha Highway adjacent to the building is 12.80 metres to 16.30 metres above the Hong Kong Principal Datum.

圖例 NOTATION

——	發展項目的邊界	Boundary Line of the Development
▽	香港主水平基準上高度(米)	Height (in metres) above the Hong Kong Principal Datum

Cross-section Plan of Building in the Development



指示圖 KEY PLAN

1. 毗連建築物的一段青衣路為香港主水平基準以上23.50米至24.65米。
The part of Tsing Yi Road adjacent to the building is 23.50 metres to 24.65 metres above the Hong Kong Principal Datum.
2. 毗連建築物的一段青鴻路為香港主水平基準以上5.10米至5.62米。
The part of Tsing Hung Road adjacent to the building is 5.10 metres to 5.62 metres above the Hong Kong Principal Datum.

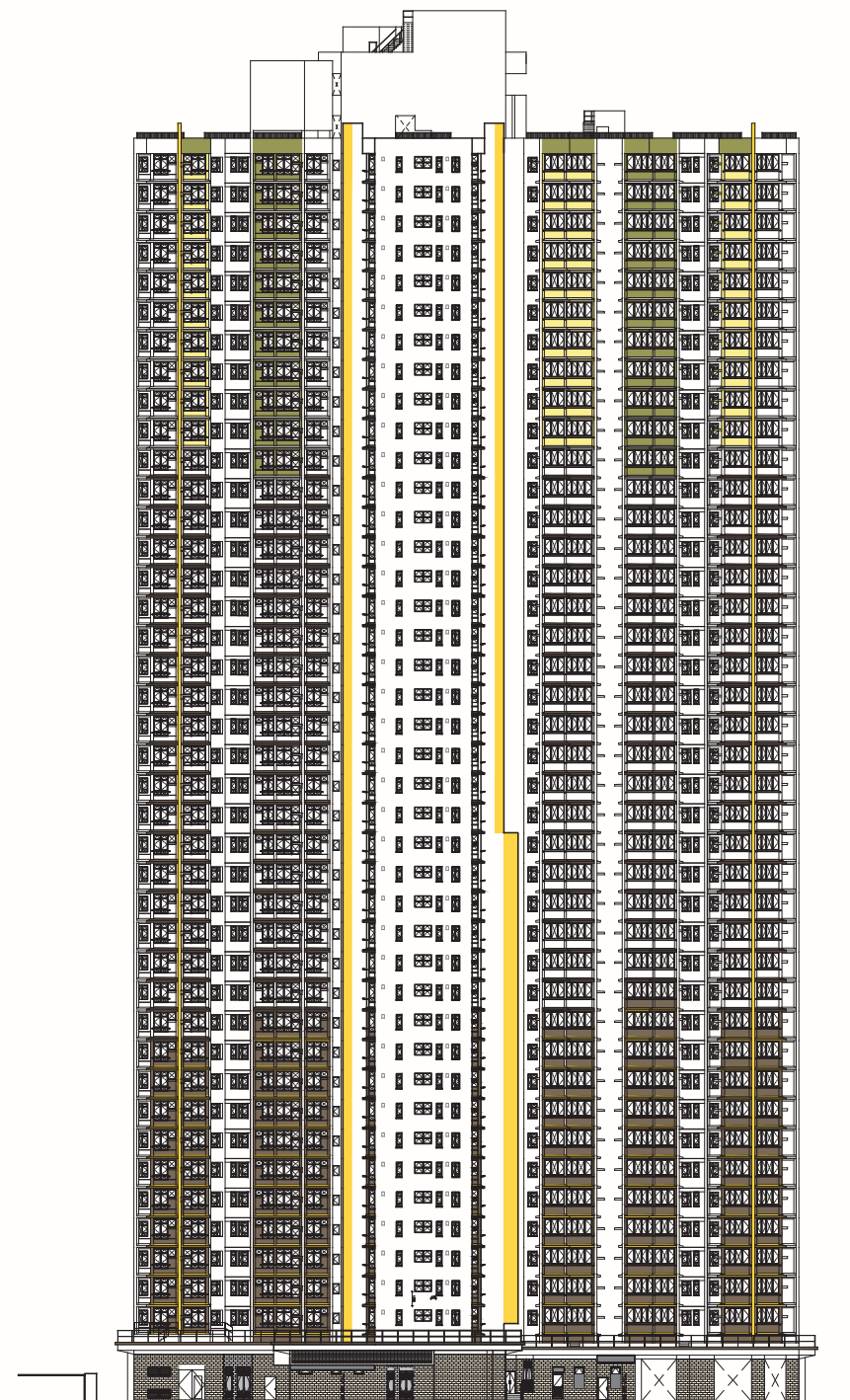
圖例 NOTATION

發展項目的邊界		Boundary Line of the Development
▽	香港主水平基準 上高度(米)	Height (in metres) above the Hong Kong Principal Datum

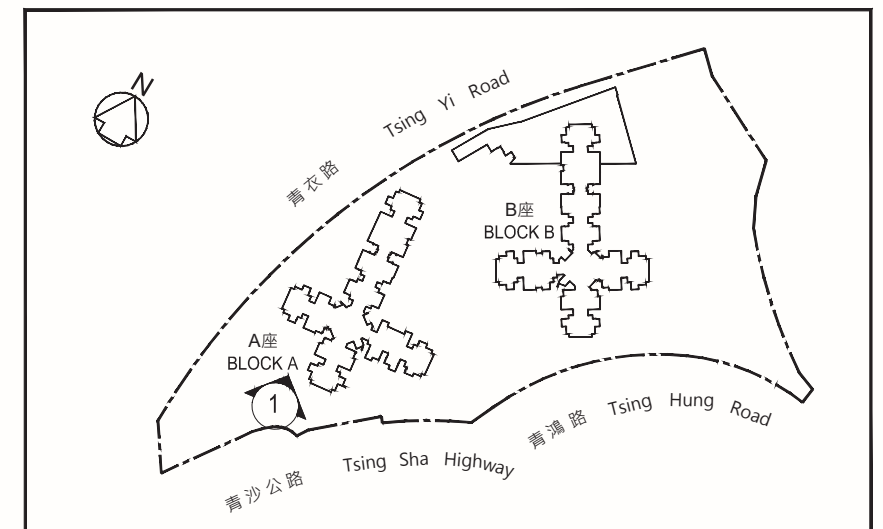
20 立面圖

Elevation Plan

A 座
Block A



南面立面圖“1”
South Elevation Plan “1”



指示圖 KEY PLAN

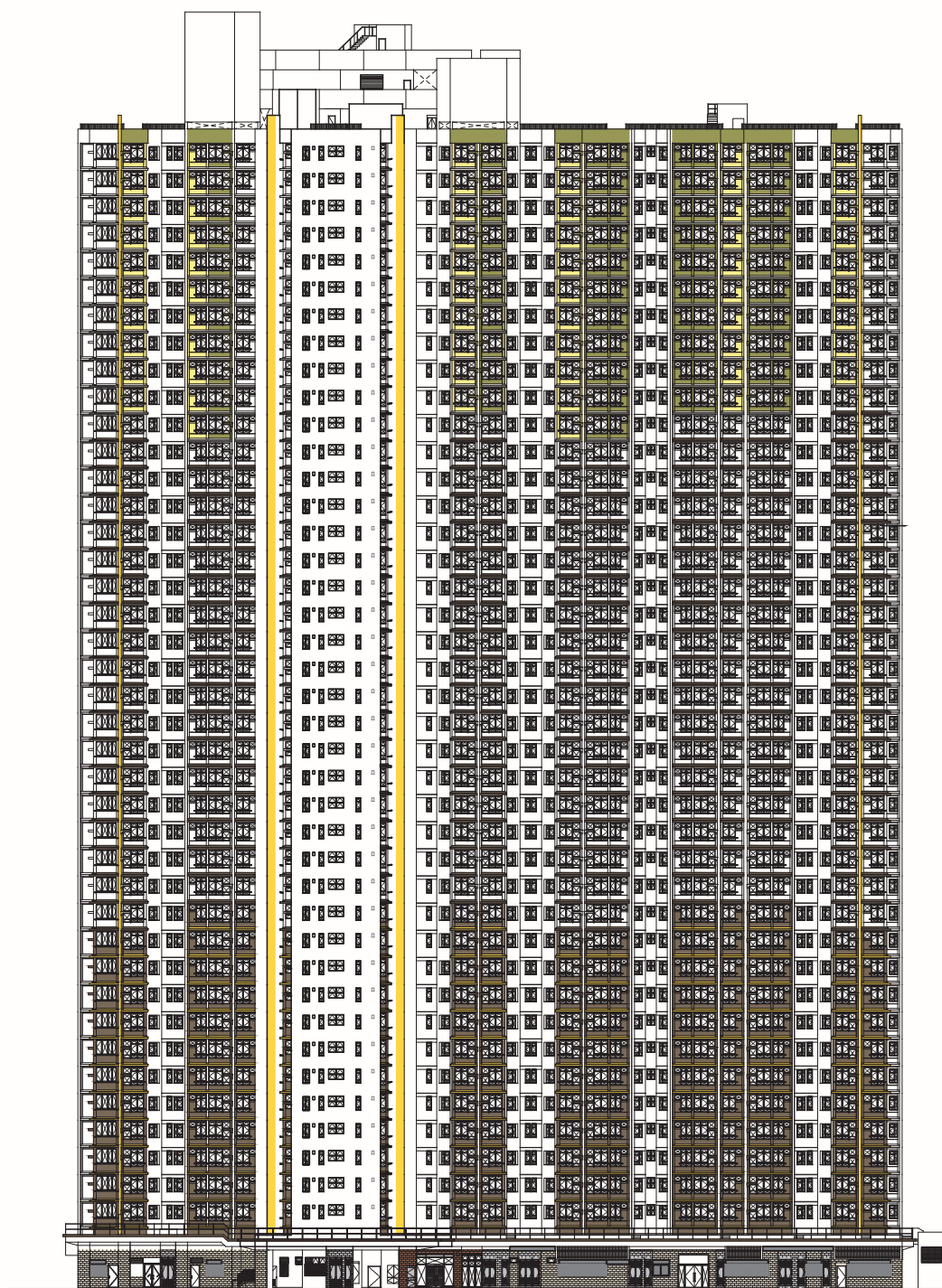
本圖所顯示的立面：

- (1) 以2020年1月6日的該項目的經批准的建築圖則為基礎擬備；及
- (2) 大致上與該項目的外觀一致。

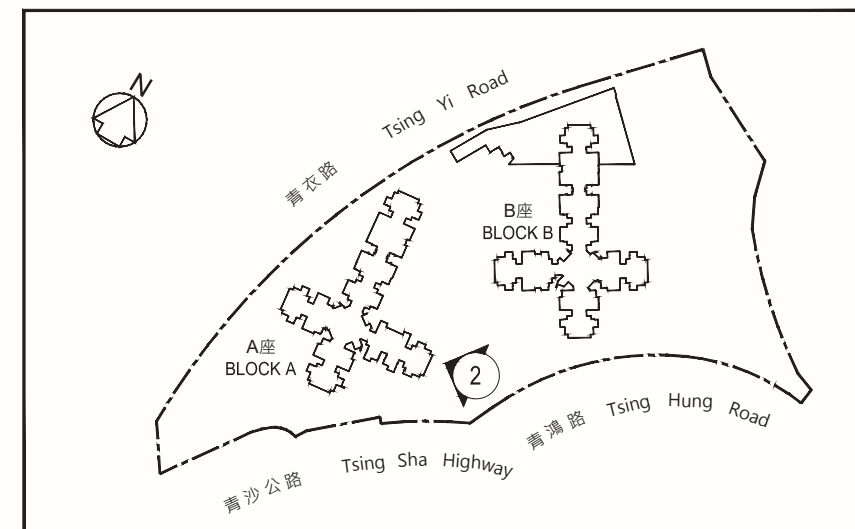
The elevation shown on this plan:

- (1) is prepared on the basis of the approved general building plans for the Development as of 6 January 2020; and
- (2) is in general accordance with the outward appearance of the Development.

A 座
Block A



東面立面圖“2”
East Elevation Plan “2”



指示圖 KEY PLAN

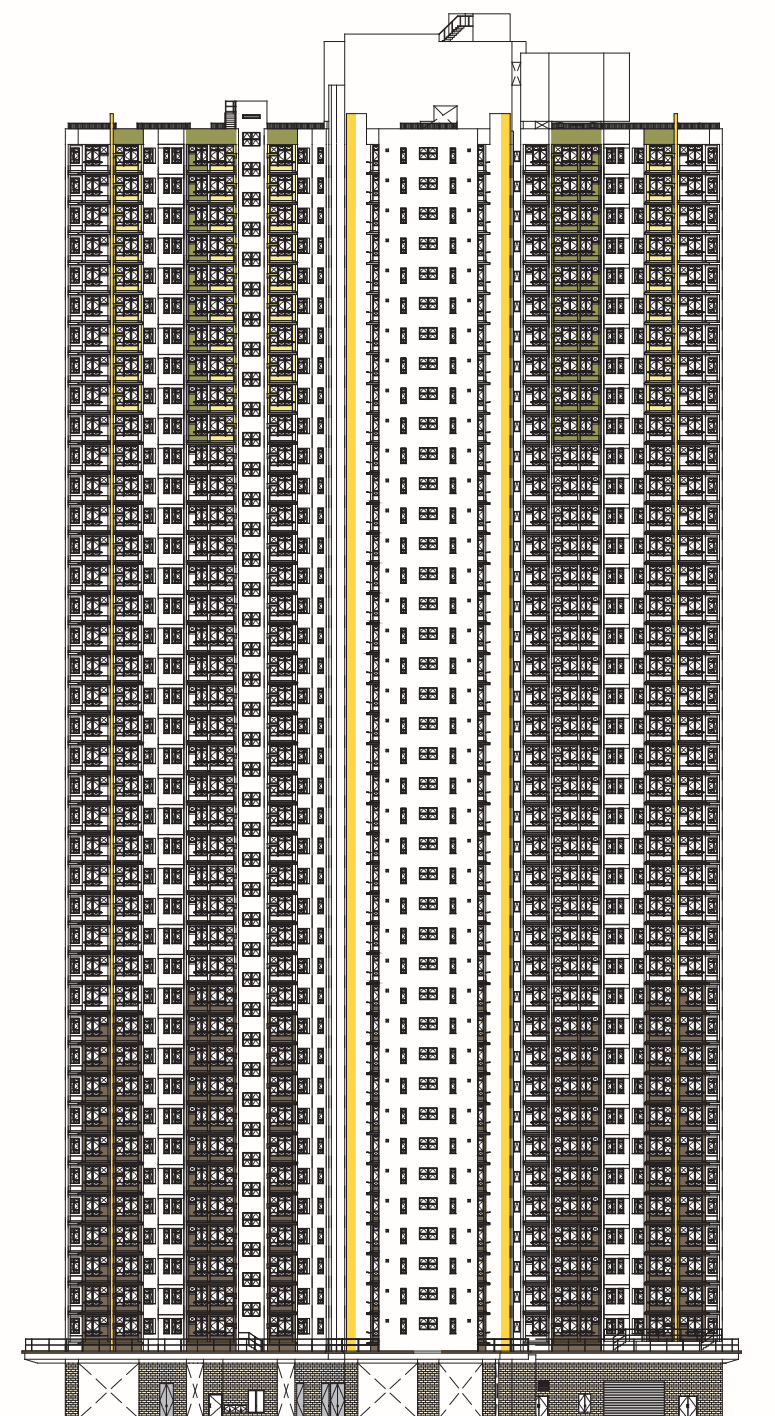
本圖所顯示的立面：

- (1) 以2020年1月6日的該項目的經批准的建築圖則為基礎擬備；及
- (2) 大致上與該項目的外觀一致。

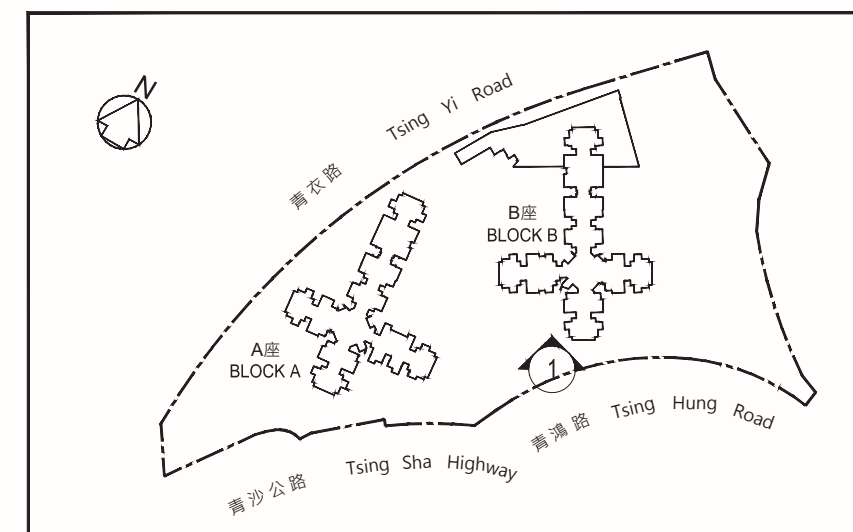
The elevation shown on this plan:

- (1) is prepared on the basis of the approved general building plans for the Development as of 6 January 2020; and
- (2) is in general accordance with the outward appearance of the Development.

B 座
Block B



東南面立面圖“1”
South East Elevation Plan “1”



指示圖 KEY PLAN

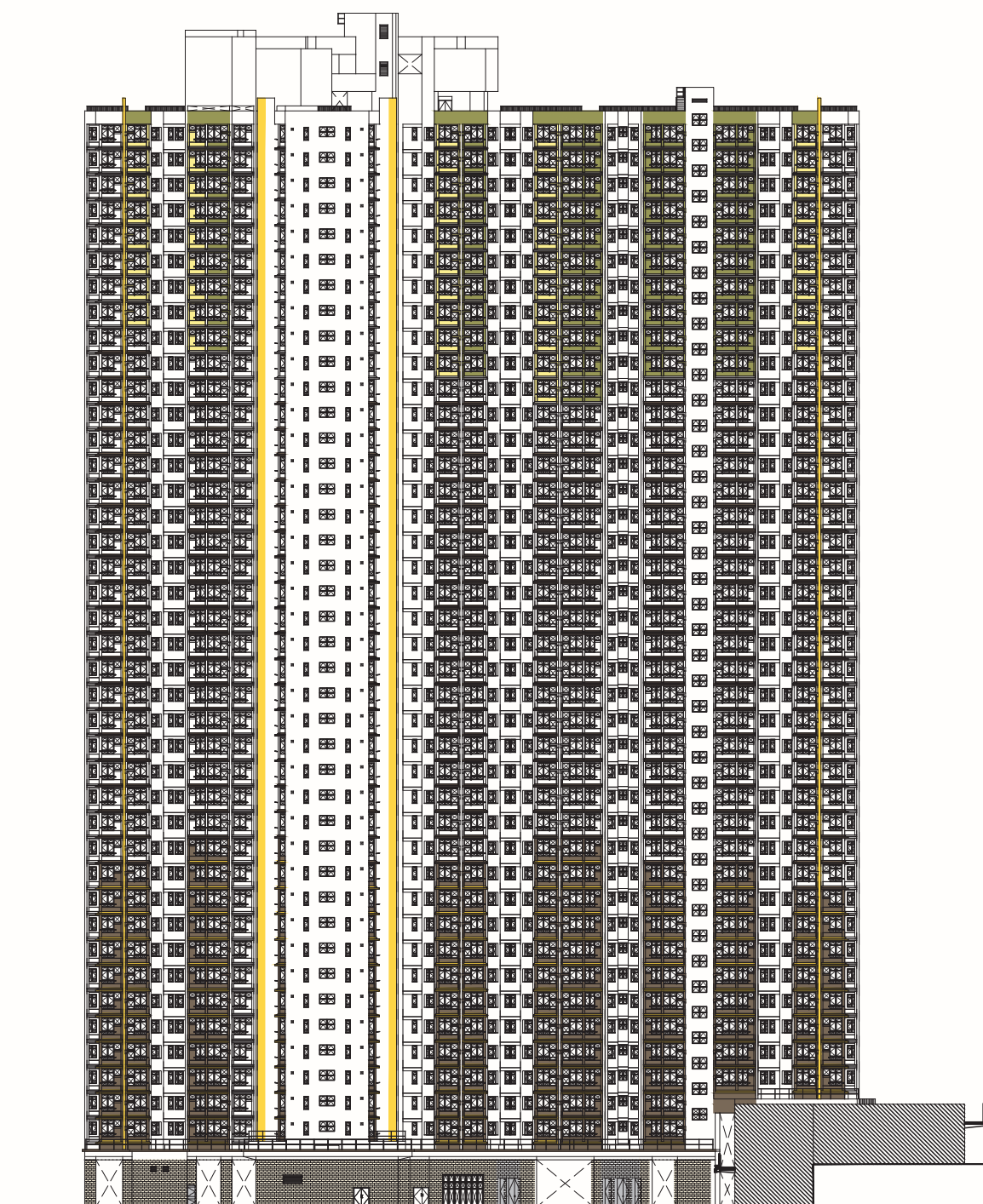
本圖所顯示的立面：

- (1) 以2020年1月6日的該項目的經批准的建築圖則為基礎擬備；及
- (2) 大致上與該項目的外觀一致。

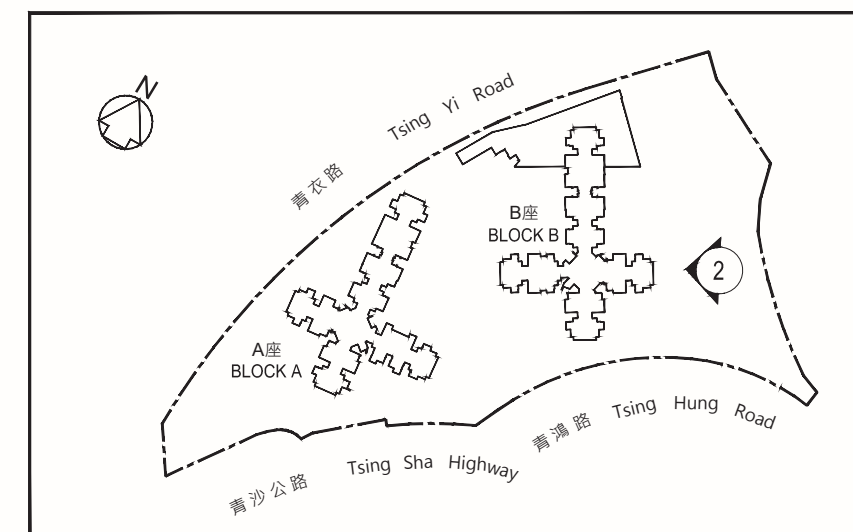
The elevation shown on this plan:

- (1) is prepared on the basis of the approved general building plans for the Development as of 6 January 2020; and
- (2) is in general accordance with the outward appearance of the Development.

B 座
Block B



東北面立面圖“2”
North East Elevation Plan “2”



指示圖 KEY PLAN

本圖所顯示的立面：

- (1) 以2020年1月6日的該項目的經批准的建築圖則為基礎擬備；及
- (2) 大致上與該項目的外觀一致。

The elevation shown on this plan:

- (1) is prepared on the basis of the approved general building plans for the Development as of 6 January 2020; and
- (2) is in general accordance with the outward appearance of the Development.