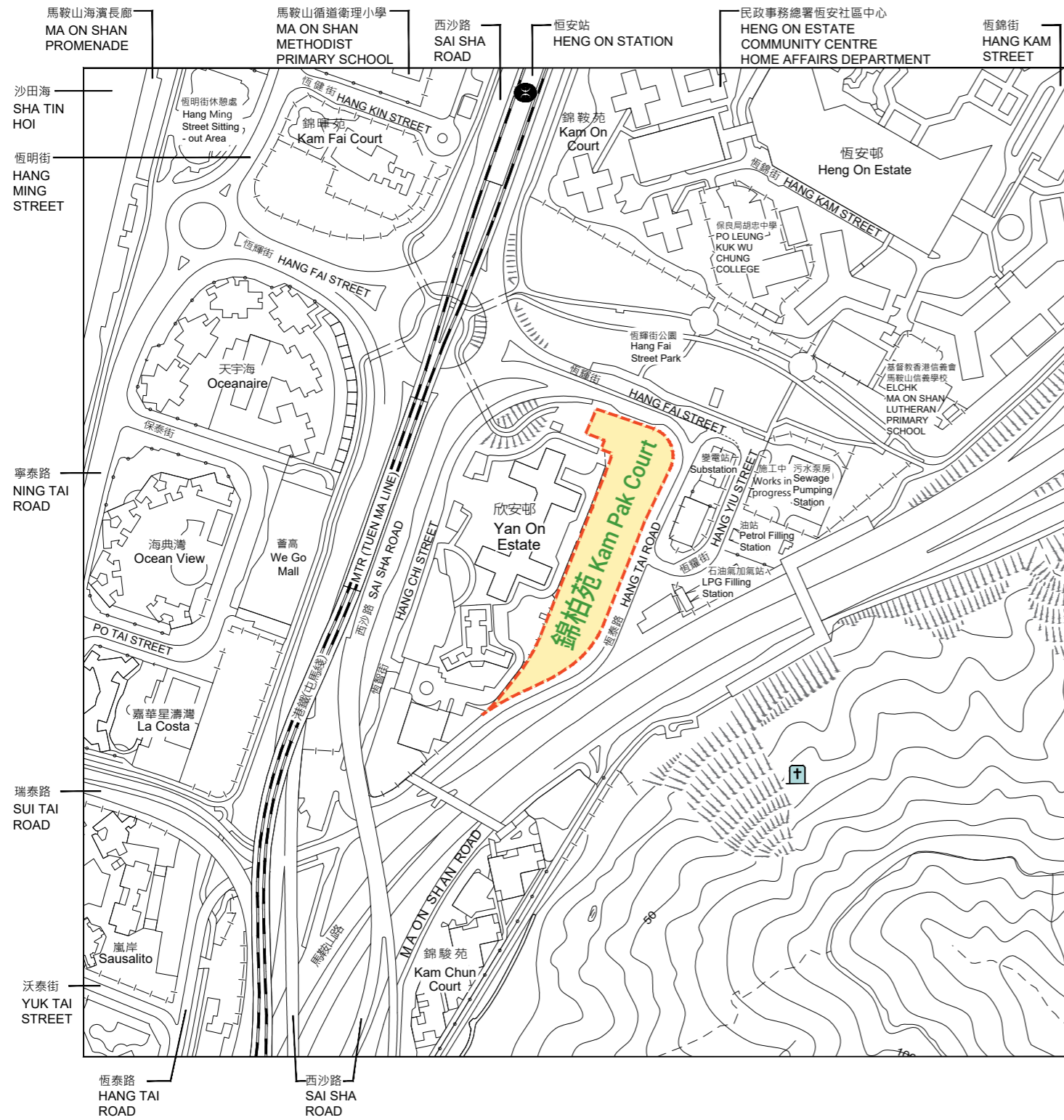



# 發展項目的位置圖

## Location Plan of the Development



### 圖例 NOTATION

 斜坡上有零散山墳\*  
Slope with Scattered Graves\*

\* 只作識別用  
\* For Identification Purposes Only

此位置圖是參考地政總署測繪處於2026年1月29日及2026年2月12日出版之數碼地形圖(編號分別為T7-NE-D及T7-NE-C)製作，有需要處經修正處理。

地圖由空間數據共享平台入門網站提供，香港特別行政區政府為知識產權擁有人。

The Location Plan is prepared with reference to the Digital Topographic Map No. T7-NE-D and T7-NE-C dated 29 January 2026 and 12 February 2026 respectively from Survey and Mapping Office of the Lands Department, with adjustments where necessary.

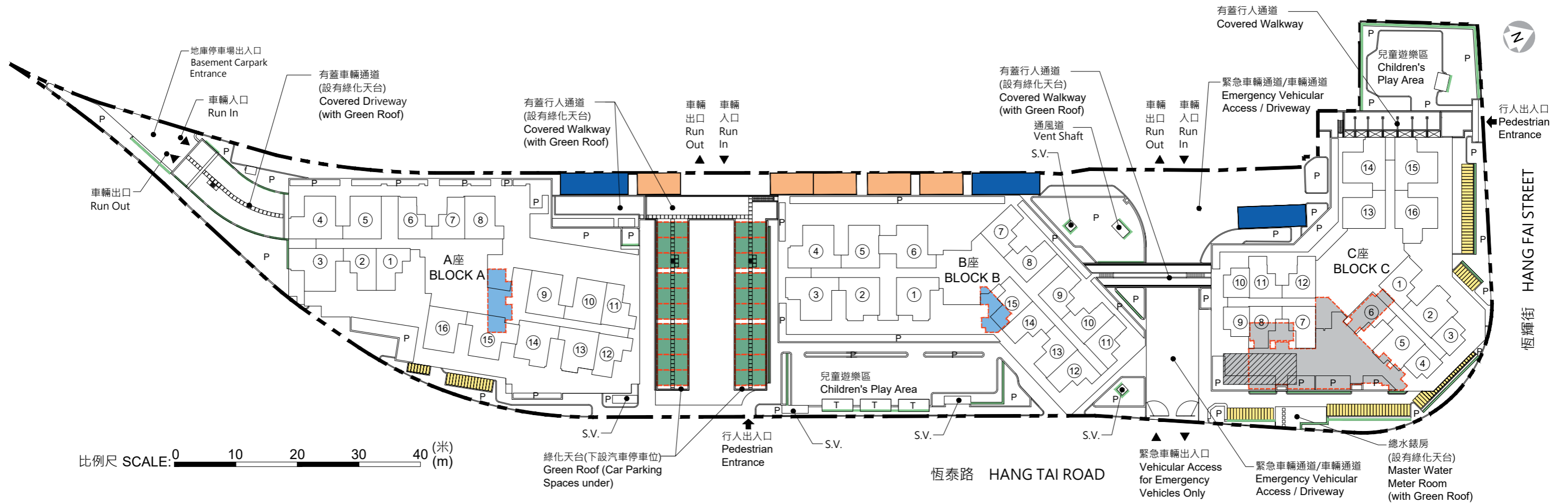
The map is provided by the Common Spatial Data Infrastructure Portal and intellectual property rights are owned by the Government of the HKSAR.

註：賣方建議買方到該發展項目作實地考察，以對該發展項目、其周邊地區環境及附近的公共設施有較佳的了解。  
Note: The Vendor advises purchasers to conduct on-site visit for a better understanding of the Development, its surrounding environment and the public facilities nearby.

比例尺 SCALE: 0 50 100 150 200 250 (米)  
(m)

# 發展項目的布局圖

## Layout Plan of the Development



### 圖例 NOTATION

	地界 Lot Boundary
①	A座2樓-20樓及22樓-43樓單位室號 Block A Flat Number on 2/F-20/F and 22/F-43/F B座1樓-40樓單位室號 Block B Flat Number on 1/F-40/F C座1樓-40樓單位室號 Block C Flat Number on 1/F-40/F
P	花槽 Planter
S.V.	排煙口 Smoke Vent
T	花棚 Trellis
	地下垃圾及物料回收房 Refuse Storage and Material Recovery Chamber on Ground Floor
	C座地下垃圾及物料回收房、垃圾收集站、廢物收集站及物料回收站 Refuse Storage and Material Recovery Chamber, Refuse Collection Point, Junk Collection Point and Material Recovery Point on Ground Floor at Block C
	垂直綠化 Vertical Greening

### 停車位類別 Category of Parking Space

停車位類別 Category of Parking Space	數目 Number
地下有蓋汽車停車位 Covered Car Parking Spaces on Ground Floor	20
地下露天輕型貨車停車位 Open Light Goods Vehicle Parking Spaces on Ground Floor	5
地下露天上落客貨停車位 Open Loading and Unloading Bays on Ground Floor	3
地下有蓋垃圾車專用車位 Covered Loading and Unloading Space Reserved for Refuse Collection Vehicles on Ground Floor	1
地下露天單車停車位 Open Bicycle Parking Spaces on Ground Floor	99
地下部分有蓋單車停車位 Partially Covered Bicycle Parking Spaces on Ground Floor	28

發展項目於地庫另設有100個有蓋汽車停車位、4個有蓋暢通易達汽車停車位及10個有蓋電單車停車位。

在104個有蓋汽車停車位中有53個有蓋汽車停車位是預留給欣安邨。

There are also 100 covered Car Parking Spaces, 4 covered Accessible Car Parking Spaces, and 10 covered Motorcycle Parking Spaces provided at the Basement of the Development.

Out of 104 covered Car Parking Spaces, 53 are reserved for Yan On Estate.

# A座標準樓層平面圖 (3樓至20樓及22樓至43樓)

## Block A Typical Floor Plan (3/F - 20/F and 22/F - 43/F)



註：

1. 平面圖所列之數字為以毫米標示之建築結構尺寸。
2. 每個住宅物業的層與層之間的高度為2.75米(20樓及43樓除外)。  
20樓及43樓每個住宅物業的層與層之間的高度為2.79米。
3. 3樓至19樓及22樓至42樓每個住宅物業的樓板(不包括灰泥)的厚度為160毫米及215毫米。  
20樓及43樓每個住宅物業的樓板(不包括灰泥)的厚度為200毫米。
4. 大廈設有5部升降機。2樓至20樓每個住宅樓層均有2部升降機到達。  
22樓至43樓每個住宅樓層均有3部升降機到達。
5. 為減低道路交通噪音的影響，部分單位將設有減音窗及/或固定窗。
6. 庇護層位於21樓。

Notes:

1. The dimensions on the floor plan are all structural dimensions in millimetre.
2. The floor-to-floor height of each residential property is 2.75m (except 20/F and 43/F).  
The floor-to-floor height of each residential property on 20/F and 43/F is 2.79m.
3. The thicknesses of the floor slabs (excluding plaster) of each residential property on 3/F to 19/F and 22/F to 42/F are 160mm and 215mm.  
The thickness of the floor slabs (excluding plaster) of each residential property on 20/F and 43/F is 200mm.
4. There are 5 lifts in the building. Each residential floor on 2/F to 20/F is served by 2 lifts. Each residential floor on 22/F to 43/F is served by 3 lifts.
5. In order to mitigate the impact of road traffic noise, acoustic windows and / or fixed windows are provided for some flats.
6. Refuge floor is located at 21/F.

# B座標準樓層平面圖 (2樓至40樓)

## Block B Typical Floor Plan (2/F - 40/F)



註：

1. 平面圖所列之數字為以毫米標示之建築結構尺寸。
2. 每個住宅物業的層與層之間的高度為2.75米(40樓除外)。  
40樓每個住宅物業的層與層之間的高度為2.79米。
3. 2樓至39樓每個住宅物業的樓板(不包括灰泥)的厚度為160毫米及215毫米。  
40樓每個住宅物業的樓板(不包括灰泥)的厚度為200毫米。
4. 大廈設有4部升降機。每個住宅樓層均有4部升降機到達。
5. 為減低道路交通噪音的影響，部分單位將設有減音窗及/或固定窗。

Notes:

1. The dimensions on the floor plan are all structural dimensions in millimetre.
2. The floor-to-floor height of each residential property is 2.75m (except 40/F).  
The floor-to-floor height of each residential property on 40/F is 2.79m.
3. The thicknesses of the floor slabs (excluding plaster) of each residential property on 2/F to 39/F are 160mm and 215mm.  
The thickness of the floor slabs (excluding plaster) of each residential property on 40/F is 200mm.
4. There are 4 lifts in the building. Each residential floor is served by 4 lifts.
5. In order to mitigate the impact of road traffic noise, acoustic windows and / or fixed windows are provided for some flats.

# C座標準樓層平面圖 (2樓至40樓)

## Block C Typical Floor Plan (2/F - 40/F)

### 圖例 NOTATION

BATH	浴室	Bathroom
ELEC. METER ROOM	電錶房	Electrical Meter Room
HR	消防喉轆	Hose Reel
KIT	廚房	Kitchen
LIV/DIN	客/飯廳	Living/Dining Room
P.D.	管道槽	Pipe Duct
RS & MRR	垃圾及物料回收室	Refuse Storage and Material Recovery Room
TELECOM AND ELV DUCT	電訊及特低壓管槽	Telecommunications and Extra Low Voltage Duct
TELECOM AND ELV ROOM	電訊及特低壓機房	Telecommunications and Extra Low Voltage Room
W.M.C.	水錶櫃	Water Meter Cupboard
	減音窗	Acoustic Window
	固定窗	Fixed Window

### 註：

1. 平面圖所列之數字為以毫米標示之建築結構尺寸。
2. 每個住宅物業的層與層之間的高度為2.75米(40樓除外)。  
40樓每個住宅物業的層與層之間的高度為2.79米。
3. 2樓至39樓每個住宅物業的樓板(不包括灰泥)的厚度為160毫米及215毫米。  
40樓每個住宅物業的樓板(不包括灰泥)的厚度為200毫米。
4. 大廈設有4部升降機。每個住宅樓層均有4部升降機到達。
5. 為減低道路交通噪音的影響，部分單位將設有減音窗及/或固定窗。

### Notes:

1. The dimensions on the floor plan are all structural dimensions in millimetre.
2. The floor-to-floor height of each residential property is 2.75m (except 40/F).  
The floor-to-floor height of each residential property on 40/F is 2.79m.
3. The thicknesses of the floor slabs (excluding plaster) of each residential property on 2/F to 39/F are 160mm and 215mm.  
The thickness of the floor slabs (excluding plaster) of each residential property on 40/F is 200mm.
4. There are 4 lifts in the building. Each residential floor is served by 4 lifts.
5. In order to mitigate the impact of road traffic noise, acoustic windows and / or fixed windows are provided for some flats.

