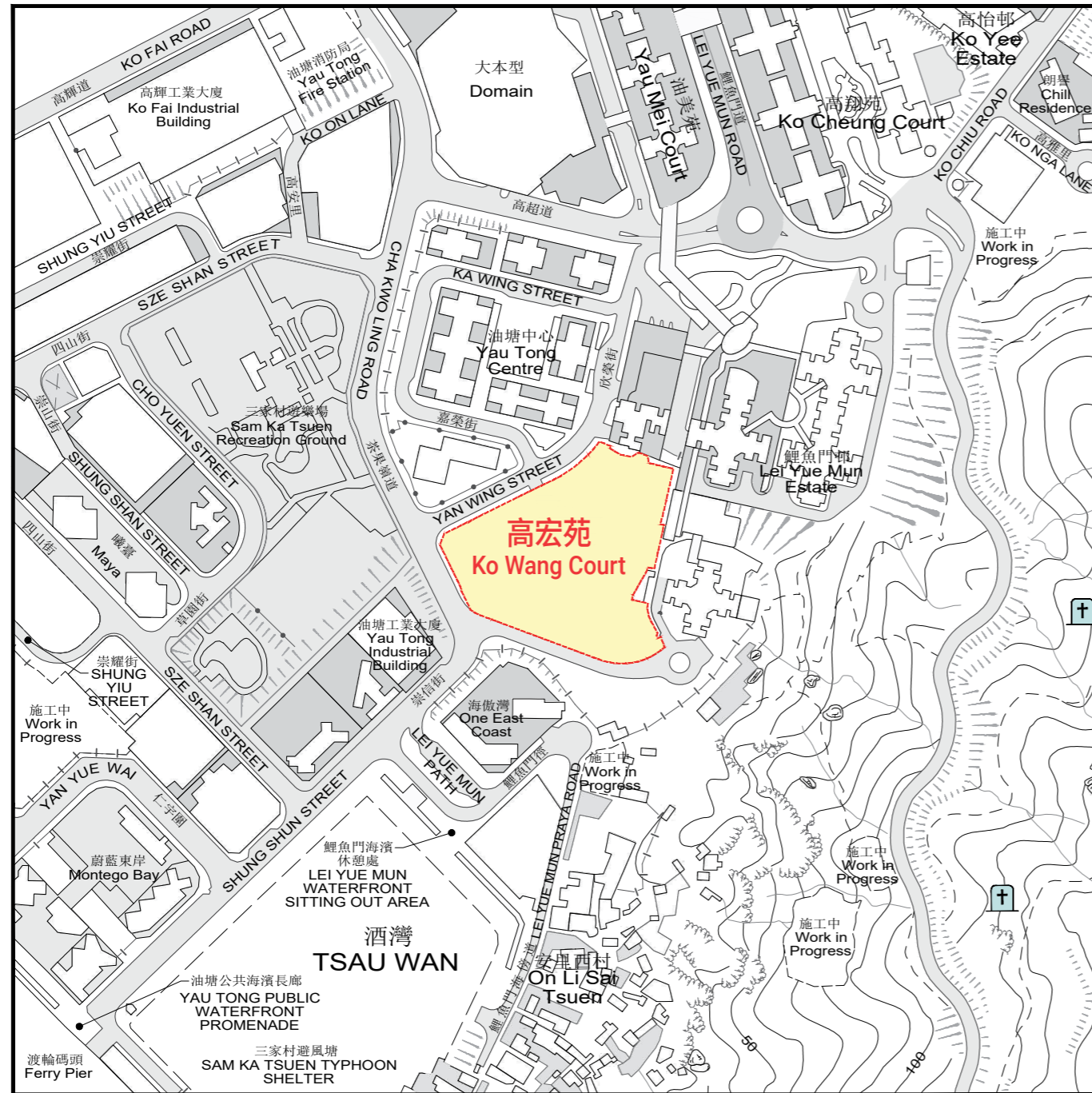


發展項目的所在位置圖


Location Plan of the Development



比例尺 SCALE: 0 50 100 150 200 250 (米) (m)



圖例 NOTATION

 斜坡上有零散山墳*
Slope with Scattered Graves*

* 只作識別用

* For Identification Purposes Only

此位置圖是參考地政總署測繪處於2026年2月12日出版之數碼地形圖(編號為T11-SE-B)製作，有需要處經修正處理。

地圖由空間數據共享平台入門網站提供，香港特別行政區政府為知識產權擁有人。

The Location Plan is prepared with reference to the Digital Topographic Map No. T11-SE-B dated 12 February 2026 from Survey and Mapping Office of the Lands Department, with adjustments where necessary.

The map is provided by the Common Spatial Data Infrastructure Portal and intellectual property rights are owned by the Government of the HKSAR.

註：賣方建議買方到該發展項目作實地考察，以對該發展項目、其周邊地區環境及附近的公共設施有較佳的了解。

Note: The Vendor advises purchasers to conduct on-site visit for a better understanding of the Development, its surrounding environment and the public facilities nearby.

發展項目的布局圖

Layout Plan of the Development



圖例 NOTATION

	地界 Lot Boundary
①	A座1樓-18樓及20樓-44樓單位室號 Block A Flat Number on 1/F to 18/F and 20/F to 44/F B座1樓-21樓及23樓-44樓單位室號 Block B Flat Number on 1/F to 21/F and 23/F to 44/F
P	花槽 Planter
	垂直綠化 Vertical Green
	地下/地下低層二樓垃圾收集站、廢物收集站及垃圾及物料回收房 Refuse Collection Point, Junk Collection Point and Refuse Storage and Material Recovery Chamber on Ground Floor/Lower Ground Second Floor
	地下有蓋兒童遊樂場/遊樂區 Covered Children's Playground / Play Area on Ground Floor

停車位類別 Category of Parking Space

Category of Parking Space	數目 Number
露天汽車停車位 Open Car Parking Spaces	7
有蓋汽車停車位(部分露天) Covered Car Parking Spaces (Partially Open Air)	6
有蓋汽車停車位 Covered Car Parking Space	1
露天上落客貨停車位 Open Loading/Unloading Bays	5
有蓋上落客貨停車位(部分露天) Covered Loading/Unloading Bay (Partially Open Air)	1
有蓋垃圾車專用車位 Covered Loading/Unloading Spaces Reserved for Refuse Collection Vehicle	3

發展項目另設有74個有蓋汽車停車位，2個有蓋暢通易達汽車停車位及15個有蓋電單車停車位。



There are also 74 numbers of covered Car Parking Space, 2 numbers of covered Accessible Car Parking Space and 15 numbers of covered Motorcycle Parking Space provided in the Development.

A座標準樓層平面圖 (2樓至18樓及20樓至44樓)

Block A Typical Floor Plan (2/F-18/F and 20/F-44/F)

比例尺 SCALE: 0 5 (米) (m)

圖例 NOTATION

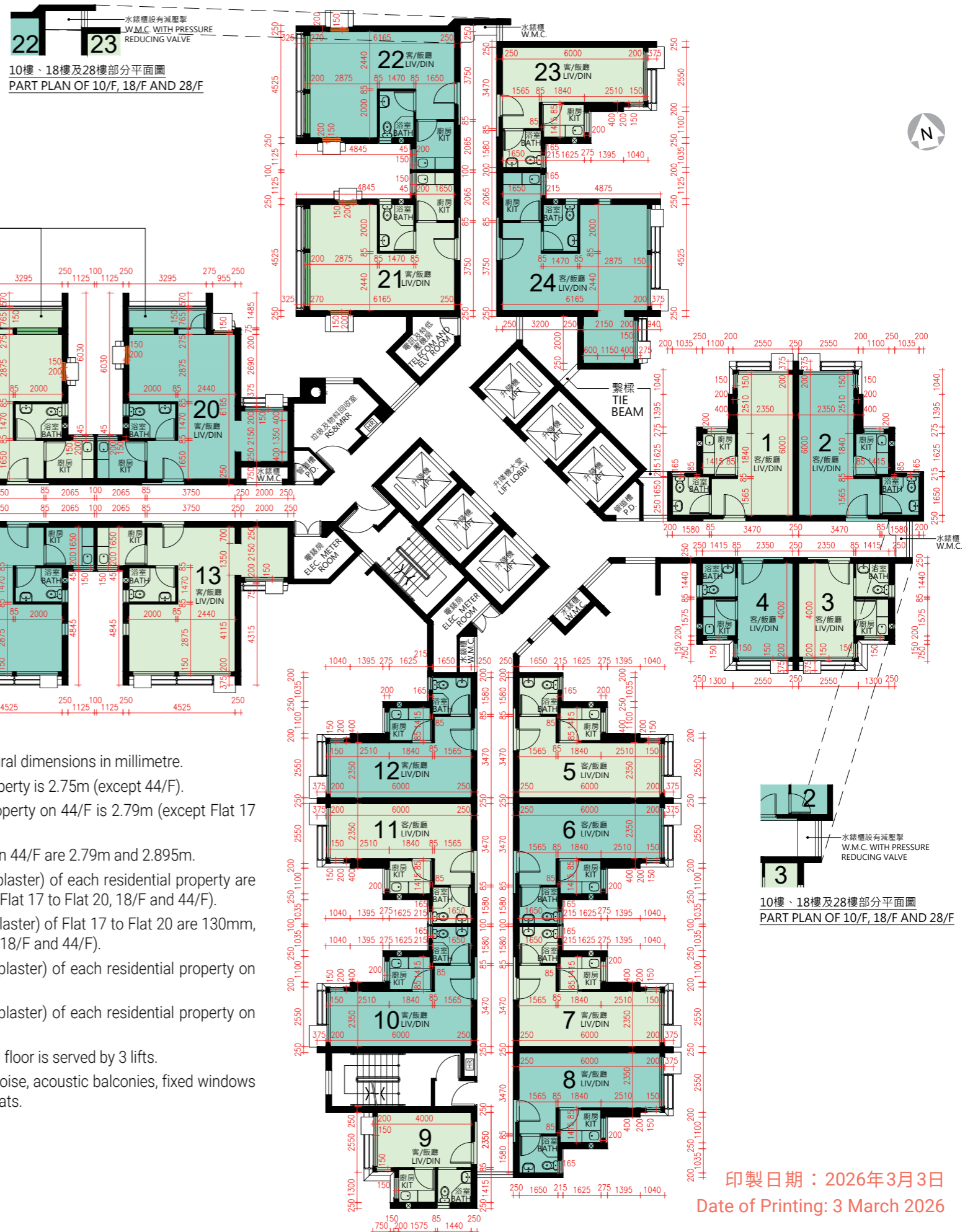
LIV/DIN	客/飯廳	Living/Dining Room
KIT	廚房	Kitchen
BATH	浴室	Bathroom
HR	消防喉轆	Hose Reel
P.D.	管道槽	Pipe Duct
W.M.C.	水錶櫃	Water Meter Cupboard
ELEC. METER ROOM	電錶房	Electrical Meter Room
TELECOM AND ELV ROOM	電訊及特低壓機房	Telecommunications and Extra Low Voltage Room
RS&MRR	垃圾及物料回收室	Refuse Storage and Material Recovery Room
	固定窗	Fixed Window
	減音窗	Acoustic Window

註：

- 平面圖所列之數字為以毫米標示之建築結構尺寸。
- 每個住宅物業的層與層之間的高度為2.75米(44樓除外)。
44樓每個住宅物業的層與層之間的高度為2.79米(17號至20號單位除外)。
44樓17號至20號單位住宅物業的層與層之間的高度為2.79米及2.895米。
- 每個住宅物業的樓板(不包括灰泥)的厚度為160毫米、195毫米、250毫米及350毫米(17號至20號單位、18樓及44樓除外)。
17號至20號單位的樓板(不包括灰泥)的厚度為130毫米、160毫米、195毫米、250毫米及350毫米(18樓及44樓除外)。
18樓每個住宅物業的樓板(不包括灰泥)的厚度為160毫米、250毫米及350毫米。
44樓每個住宅物業的樓板(不包括灰泥)的厚度為200毫米、290毫米及350毫米。
- 大廈設有6部升降機。每個住宅樓層均有3部升降機到達。
- 為減低道路交通噪音的影響，部分單位將設有減音露台、固定窗及減音窗。
- 庇護層位於19樓。

Notes:

- The dimensions on the floor plan are all structural dimensions in millimetre.
- The floor-to-floor height of each residential property is 2.75m (except 44/F).
The floor-to-floor height of each residential property on 44/F is 2.79m (except Flat 17 to Flat 20).
The floor-to-floor heights of Flat 17 to Flat 20 on 44/F are 2.79m and 2.895m.
- The thicknesses of the floor slabs (excluding plaster) of each residential property are 160mm, 195mm, 250mm and 350mm (except Flat 17 to Flat 20, 18/F and 44/F).
The thicknesses of the floor slabs (excluding plaster) of Flat 17 to Flat 20 are 130mm, 160mm, 195mm, 250mm and 350mm (except 18/F and 44/F).
The thicknesses of the floor slabs (excluding plaster) of each residential property on 18/F are 160mm, 250mm and 350mm.
The thicknesses of the floor slabs (excluding plaster) of each residential property on 44/F are 200mm, 290mm and 350mm.
- There are 6 lifts in the building. Each residential floor is served by 3 lifts.
- In order to mitigate the impact of road traffic noise, acoustic balconies, fixed windows and acoustic windows are provided for some flats.
- Refuge floor is located at 19/F.



印製日期：2026年3月3日
Date of Printing: 3 March 2026

B座標準樓層平面圖 (2樓至21樓及23樓至44樓)

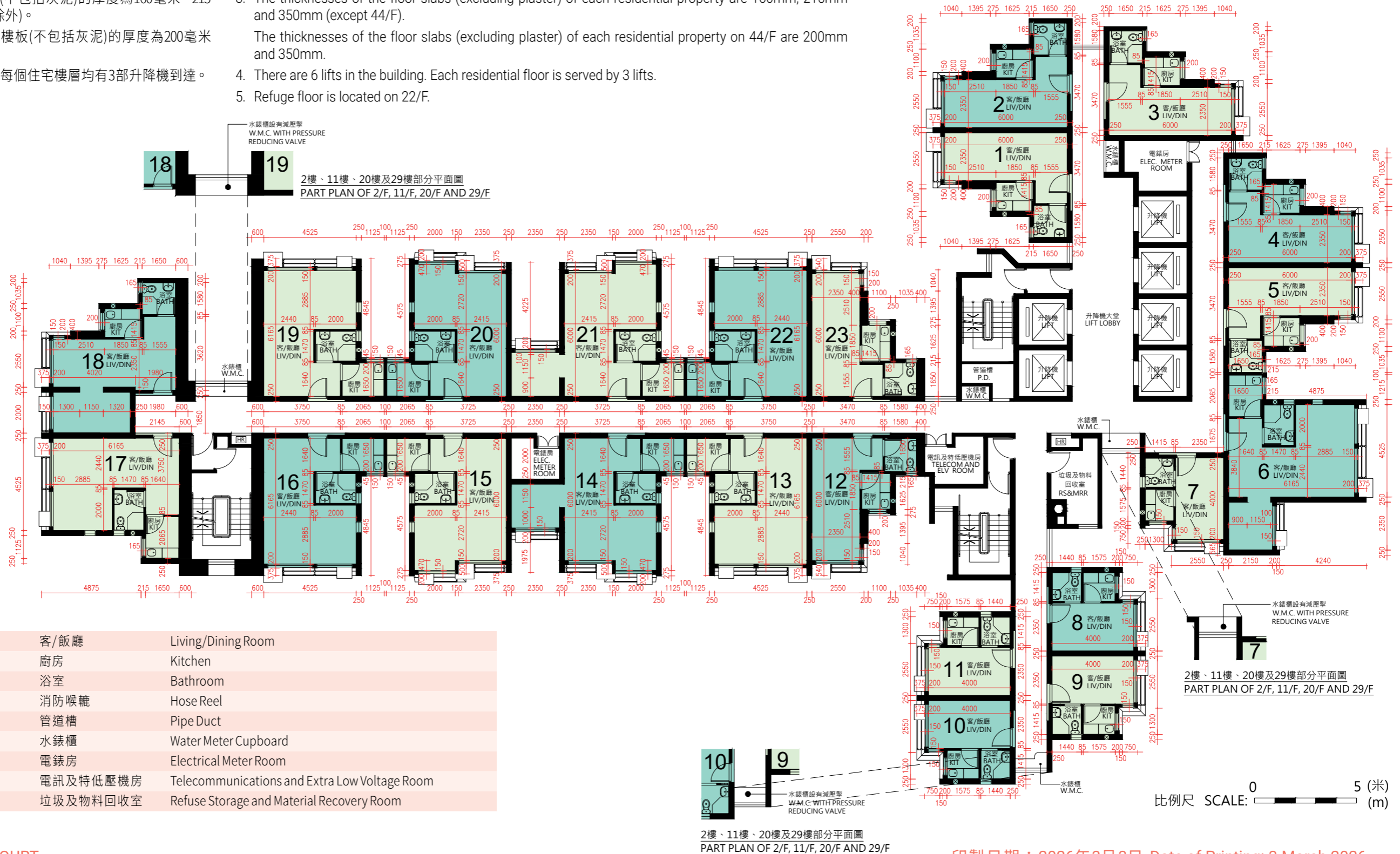
Block B Typical Floor Plan (2/F-21/F and 23/F-44/F)

註：

1. 平面圖所列之數字為以毫米標示之建築結構尺寸。
2. 每個住宅物業的層與層之間的高度為2.75米(44樓除外)。
44樓每個住宅物業的層與層之間的高度為2.79米。
3. 每個住宅物業的樓板(不包括灰泥)的厚度為160毫米、215毫米及350毫米(44樓除外)。
44樓每個住宅物業的樓板(不包括灰泥)的厚度為200毫米及350毫米。
4. 大廈設有6部升降機。每個住宅樓層均有3部升降機到達。
5. 庇護層位於22樓。

Notes:

1. The dimensions on the floor plan are all structural dimensions in millimetre.
2. The floor-to-floor height of each residential property is 2.75m (except 44/F).
The floor-to-floor height of each residential property on 44/F is 2.79m.
3. The thicknesses of the floor slabs (excluding plaster) of each residential property are 160mm, 215mm and 350mm (except 44/F).
The thicknesses of the floor slabs (excluding plaster) of each residential property on 44/F are 200mm and 350mm.
4. There are 6 lifts in the building. Each residential floor is served by 3 lifts.
5. Refuge floor is located on 22/F.



圖例 NOTATION

LIV/DIN	客/飯廳	Living/Dining Room
KIT	廚房	Kitchen
BATH	浴室	Bathroom
HR	消防喉轆	Hose Reel
P.D.	管道槽	Pipe Duct
W.M.C.	水錶櫃	Water Meter Cupboard
ELEC. METER ROOM	電錶房	Electrical Meter Room
TELECOM AND ELV ROOM	電訊及特低壓機房	Telecommunications and Extra Low Voltage Room
RS&MRR	垃圾及物料回收室	Refuse Storage and Material Recovery Room