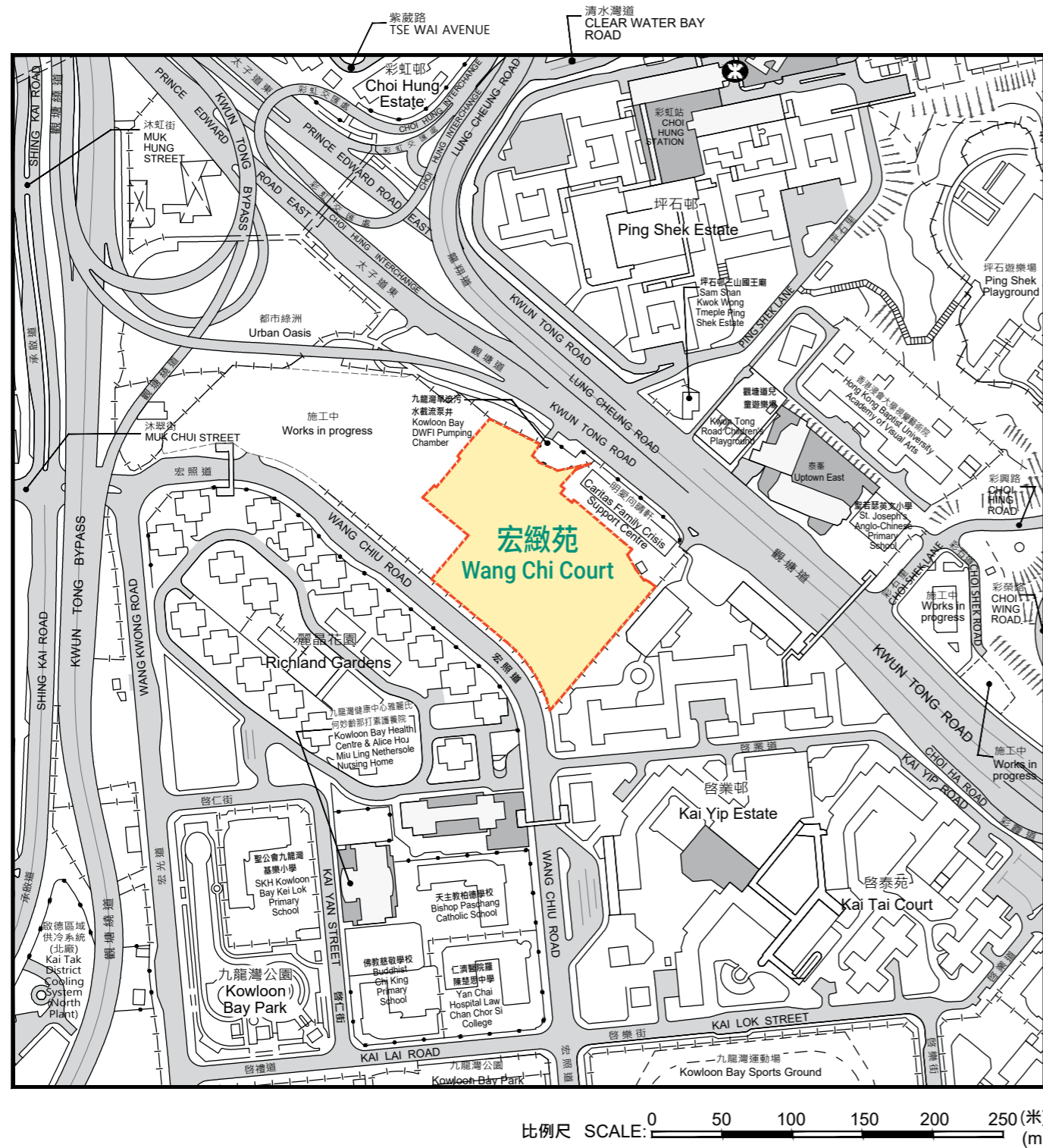
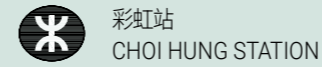


# 發展項目的所在位置圖

Location Plan of the Development



## 圖例 NOTATION



彩虹站  
CHOI HUNG STATION

此位置圖是參考地政總署測繪處於 2026 年 2 月 12 日出版之數碼地形圖 (編號分別為 T11-NE-A 及 T11-NE-C) 製作, 有需要處修正處理。

地圖由空間數據共享平台入門網站提供, 香港特別行政區政府為知識產權擁有人。

The Location Plan is prepared with reference to the Digital Topographic Map Nos. T11-NE-A and T11-NE-C all dated 12 February 2026 from Survey and Mapping Office of the Lands Department, with adjustments where necessary.

The map is provided by the Common Spatial Data Infrastructure Portal and intellectual property rights are owned by the Government of the HKSAR.

註: 賣方建議買方到該發展項目作實地考察, 以對該發展項目、其周邊地區環境及附近的公共設施有較佳的了解。

Note: The Vendor advises purchasers to conduct on-site visit for a better understanding of the Development, its surrounding environment and the public facilities nearby.

# 發展項目的布局圖

## Layout Plan of the Development

比例尺 SCALE: 0 10 20 30 40 50 (米) (m)

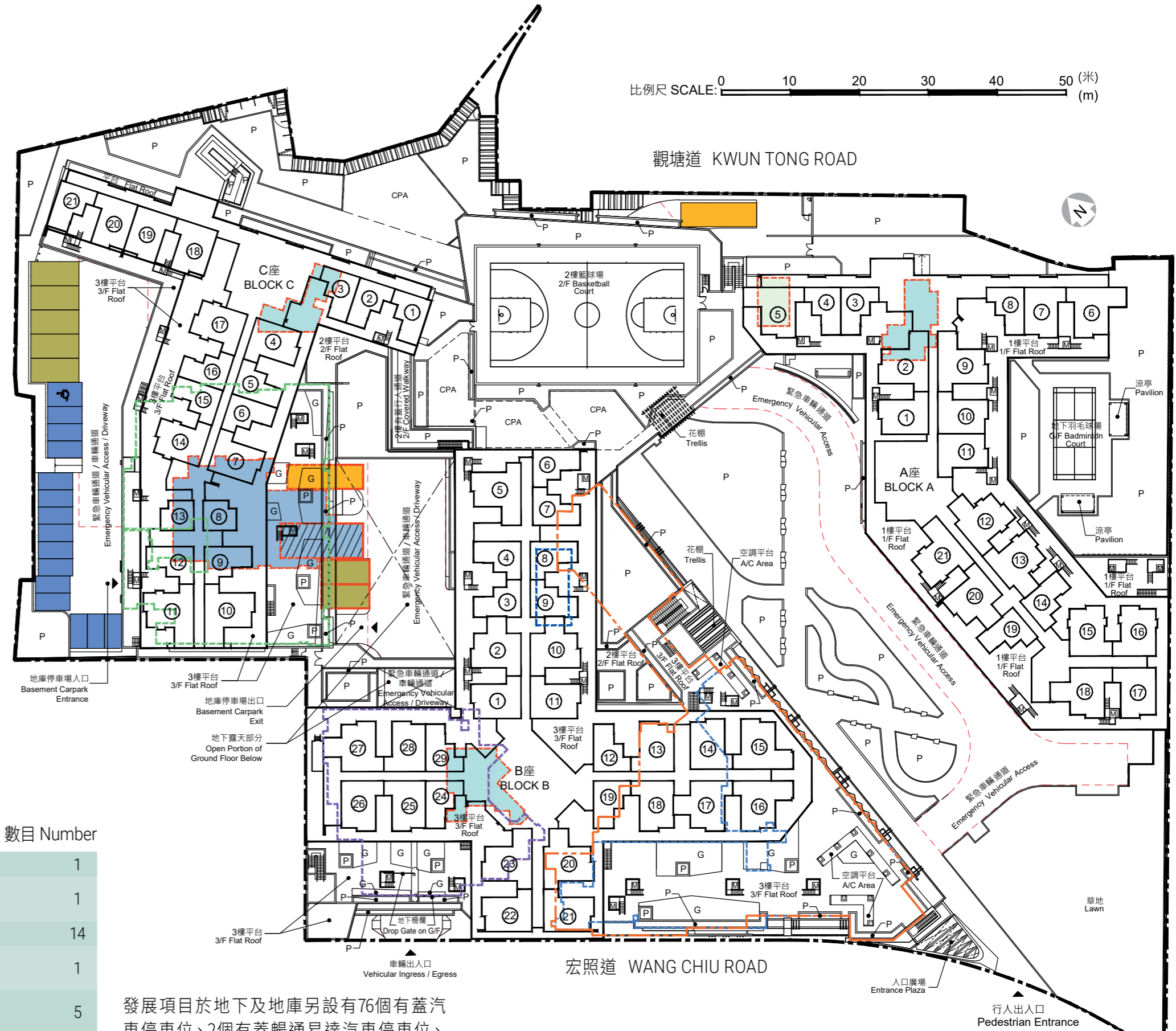
### 圖例 NOTATION

- 地界 Lot Boundary
- A座2樓至35樓單位室號 (36樓-39樓不設5號單位及38樓-39樓不設3號-4號單位)  
Block A Flat Number on 2/F- 35/F  
(No provision of Flat 5 for 36/F to 39/F and Flat 3 to Flat 4 for 38/F to 39/F)
- ① B座3樓至37樓單位室號 Block B Flat Number on 3/F- 37/F
- C座3樓至36樓單位室號 (37樓-38樓不設1號-3號單位)  
Block C Flat Number on 3/F- 36/F  
(No provision of Flat 1 to Flat 3 for 37/F to 38/F)
- CPA 地下及2樓公用遊樂區 Communal Play Area on Ground Floor and 2/F
- P 花槽 Planter
- G 3樓綠化天台 Green Roof on 3/F
- M 沙井 Manhole
- 地下垃圾收集站、廢物收集站及物料回收站及垃圾及物料回收房  
Refuse Collection Point, Junk Collection Point, Material Recovery Point and Refuse Storage & Material Recovery Chamber on Ground Floor
- 地下垃圾及物料回收房  
Refuse Storage & Material Recovery Chamber on Ground Floor
- A座地下有蓋乒乓球場  
Covered Table Tennis Court on Ground Floor of Block A
- B座1樓安老院舍 Residential Care Home for the Elderly on 1/F of Block B
- B座2樓安老院舍 Residential Care Home for the Elderly on 2/F of Block B
- B座2樓幼兒中心 Child Care Centre on 2/F of Block B
- B座2樓自修室暨福利用途  
Study Room cum Welfare Uses on 2/F of Block B
- C座2樓幼稚園 Kindergarten on 2/F of Block C

### 停車位類別 Category of Parking Space

### 數目 Number

	地下露天上落客貨停車位 Open Loading and Unloading Bay on Ground Floor	1
	地下部分有蓋上落客貨停車位 Partially Covered Loading and Unloading Bay on Ground Floor	1
	地下露天停車位 Open Car Parking Spaces on Ground Floor	14
	地下露天暢通易達汽車停車位 Open Accessible Car Parking Space on Ground Floor	1
	地下露天輕型貨車停車位 Open Light Goods Vehicle Parking Spaces on Ground Floor	5
	地下部分有蓋輕型貨車停車位 Partially Covered Light Goods Vehicle Parking Spaces on Ground Floor	2
	地下部分有蓋垃圾車專用車位 Partially Covered Loading and Unloading Space Reserved for Refuse Collection Vehicle on Ground Floor	1

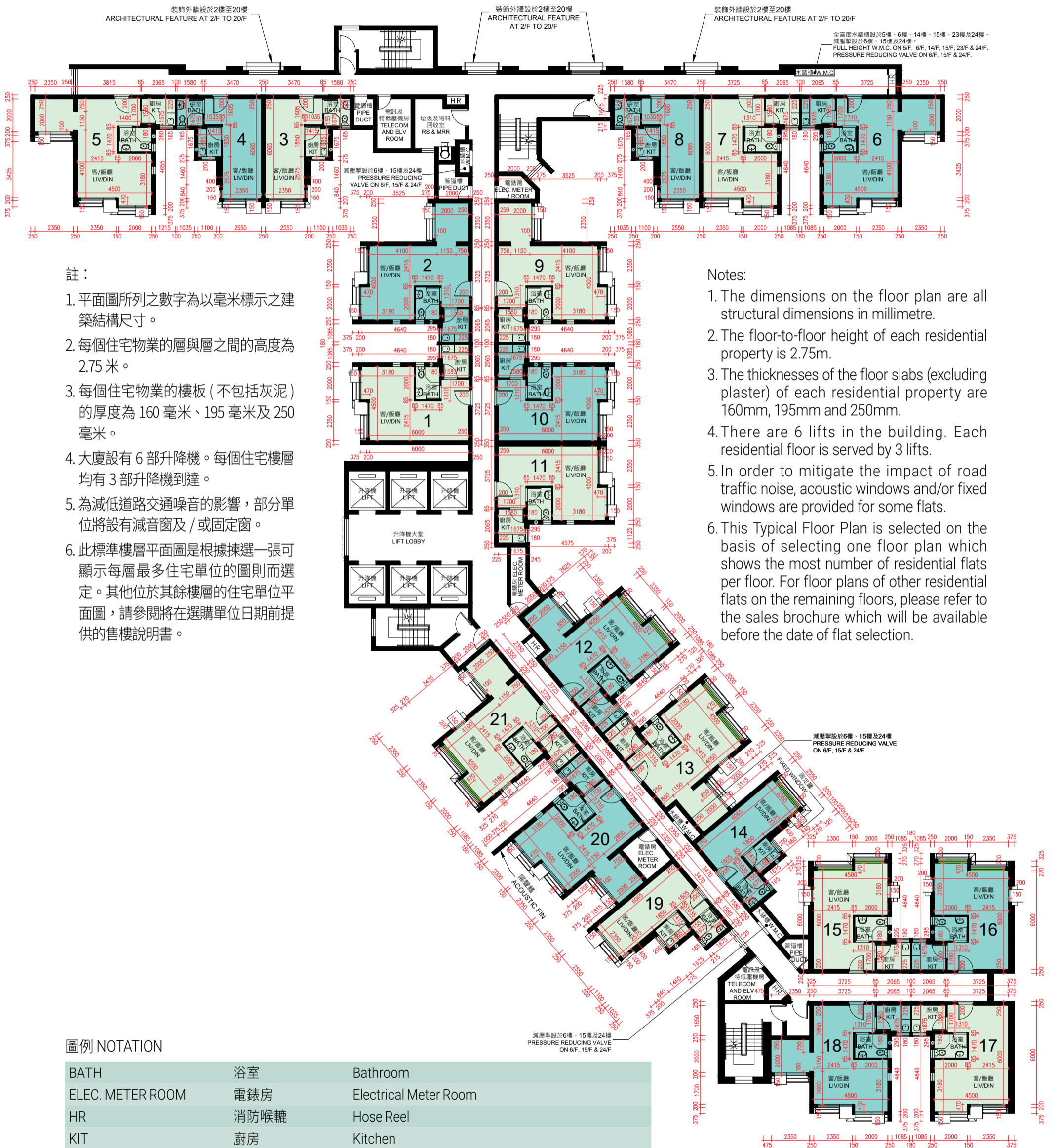


發展項目於地下及地庫另設有76個有蓋汽車停車位、2個有蓋暢通易達汽車停車位、23個有蓋電單車停車位、5個有蓋輕型貨車停車位、4個有蓋上落客貨停車位、1個有蓋私家小巴停車位及1個有蓋路旁停車處。  
發展項目於B座地下設有商業設施。

There are also 76 covered Car Parking Spaces, 2 covered Accessible Car Parking Spaces, 23 covered Motorcycle Parking Spaces, 5 covered Light Goods Vehicle Parking Spaces, 4 covered Loading and Unloading Bays, 1 covered Private Light Bus Parking Space and 1 covered Lay-by respectively on G/F and at the basement of the Development.  
There are commercial facilities provided at Block B (G/F) of the Development

# A座標準樓層平面圖 (2樓至35樓)

## Block A Typical Floor Plan (2/F - 35/F)



註：

1. 平面圖所列之數字為以毫米標示之建築結構尺寸。
2. 每個住宅物業的層與層之間的高度為 2.75 米。
3. 每個住宅物業的樓板 (不包括灰泥) 的厚度為 160 毫米、195 毫米及 250 毫米。
4. 大廈設有 6 部升降機。每個住宅樓層均有 3 部升降機到達。
5. 為減低道路交通噪音的影響，部分單位將設有減音窗及 / 或固定窗。
6. 此標準樓層平面圖是根據揀選一張可顯示每層最多住宅單位的圖則而選定。其他位於其餘樓層的住宅單位平面圖，請參閱將在選購單位日期前提供的售樓說明書。

Notes:

1. The dimensions on the floor plan are all structural dimensions in millimetre.
2. The floor-to-floor height of each residential property is 2.75m.
3. The thicknesses of the floor slabs (excluding plaster) of each residential property are 160mm, 195mm and 250mm.
4. There are 6 lifts in the building. Each residential floor is served by 3 lifts.
5. In order to mitigate the impact of road traffic noise, acoustic windows and/or fixed windows are provided for some flats.
6. This Typical Floor Plan is selected on the basis of selecting one floor plan which shows the most number of residential flats per floor. For floor plans of other residential flats on the remaining floors, please refer to the sales brochure which will be available before the date of flat selection.

### 圖例 NOTATION

BATH	浴室	Bathroom
ELEC. METER ROOM	電錶房	Electrical Meter Room
HR	消防喉轆	Hose Reel
KIT	廚房	Kitchen
LIV/DIN	客/飯廳	Living/Dining Room
RS & MRR	垃圾及物料回收室	Refuse Storage and Material Recovery Room
TELECOM AND ELV ROOM	電訊及特低壓機房	Telecommunications and Extra Low Voltage Room
W.M.C.	水錶櫃	Water Meter Cupboard
	減音窗*	Acoustic Window*
	固定窗	Fixed Window



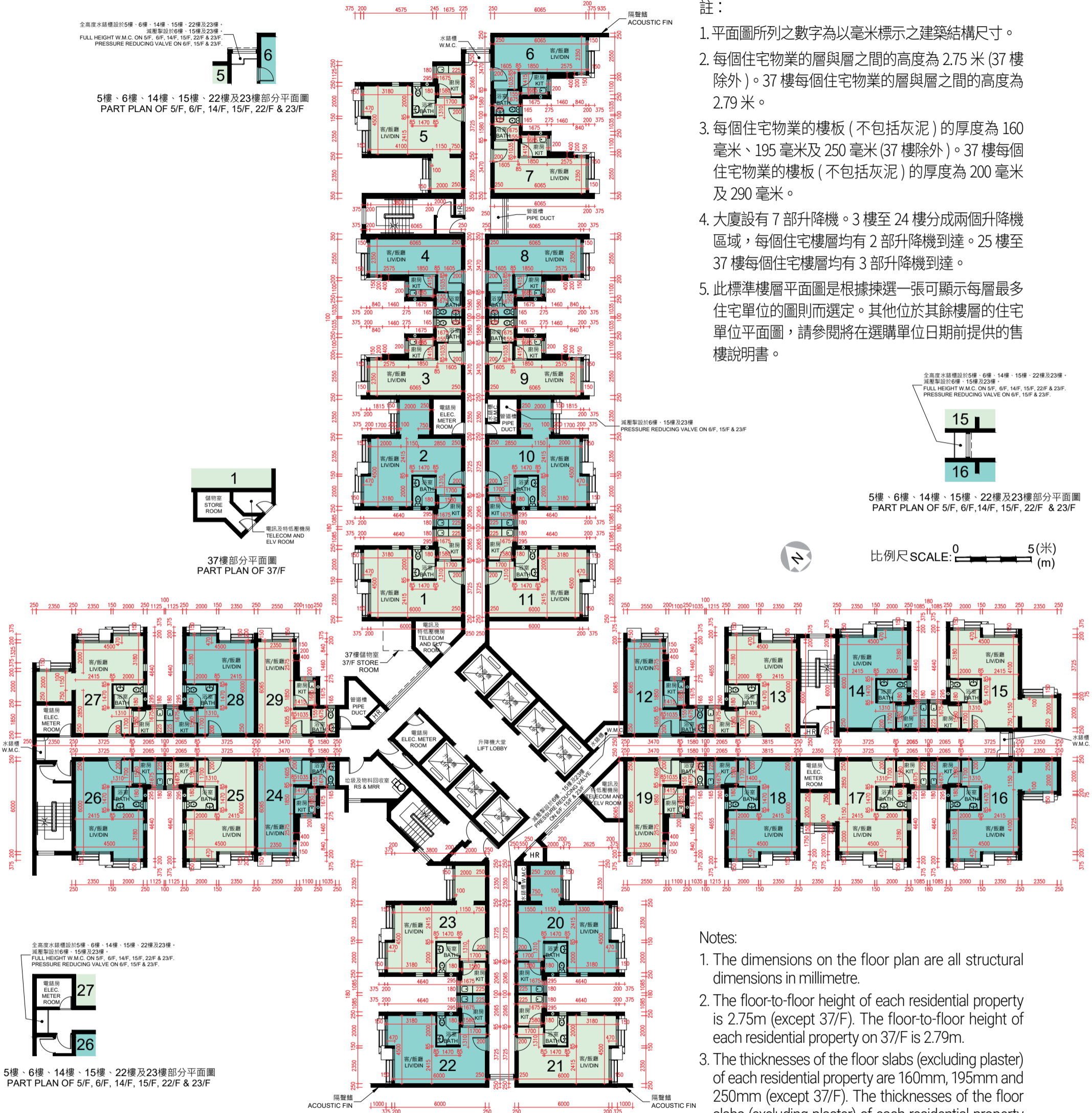
比例尺 SCALE: 0 5 (米) (m)

\* 部分減音窗為固定窗 (不能開啟)

\* Part of the acoustic windows are fixed windows (not openable)

# B座標準樓層平面圖 (4樓至37樓)

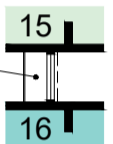
## Block B Typical Floor Plan (4/F - 37/F)



註：

1. 平面圖所列之數字為以毫米標示之建築結構尺寸。
2. 每個住宅物業的層與層之間的高度為 2.75 米 (37 樓除外)。37 樓每個住宅物業的層與層之間的高度為 2.79 米。
3. 每個住宅物業的樓板 (不包括灰泥) 的厚度為 160 毫米、195 毫米及 250 毫米 (37 樓除外)。37 樓每個住宅物業的樓板 (不包括灰泥) 的厚度為 200 毫米及 290 毫米。
4. 大廈設有 7 部升降機。3 樓至 24 樓分成兩個升降機區域，每個住宅樓層均有 2 部升降機到達。25 樓至 37 樓每個住宅樓層均有 3 部升降機到達。
5. 此標準樓層平面圖是根據揀選一張可顯示每層最多住宅單位的圖則而選定。其他位於其餘樓層的住宅單位平面圖，請參閱將在選購單位日期前提供的售樓說明書。

全高度水錶櫃設於5樓、6樓、14樓、15樓、22樓及23樓。  
減壓掣設於6樓、15樓及23樓。  
FULL HEIGHT W.M.C. ON 5/F, 6/F, 14/F, 15/F, 22/F & 23/F.  
PRESSURE REDUCING VALVE ON 6/F, 15/F & 23/F.



5樓、6樓、14樓、15樓、22樓及23樓部分平面圖  
PART PLAN OF 5/F, 6/F, 14/F, 15/F, 22/F & 23/F

比例尺 SCALE: 0 5 (米) (m)

Notes:

1. The dimensions on the floor plan are all structural dimensions in millimetre.
2. The floor-to-floor height of each residential property is 2.75m (except 37/F). The floor-to-floor height of each residential property on 37/F is 2.79m.
3. The thicknesses of the floor slabs (excluding plaster) of each residential property are 160mm, 195mm and 250mm (except 37/F). The thicknesses of the floor slabs (excluding plaster) of each residential property on 37/F are 200mm and 290mm.
4. There are 7 lifts in the building. Assigned to two lift zones, each residential floor on 3/F to 24/F is served by 2 lifts. Each residential floor on 25/F to 37/F is served by 3 lifts.
5. This Typical Floor Plan is selected on the basis of selecting one floor plan which shows the most number of residential flats per floor. For floor plans of other residential flats on the remaining floors, please refer to the sales brochure which will be available before the date of flat selection.

### 圖例 NOTATION

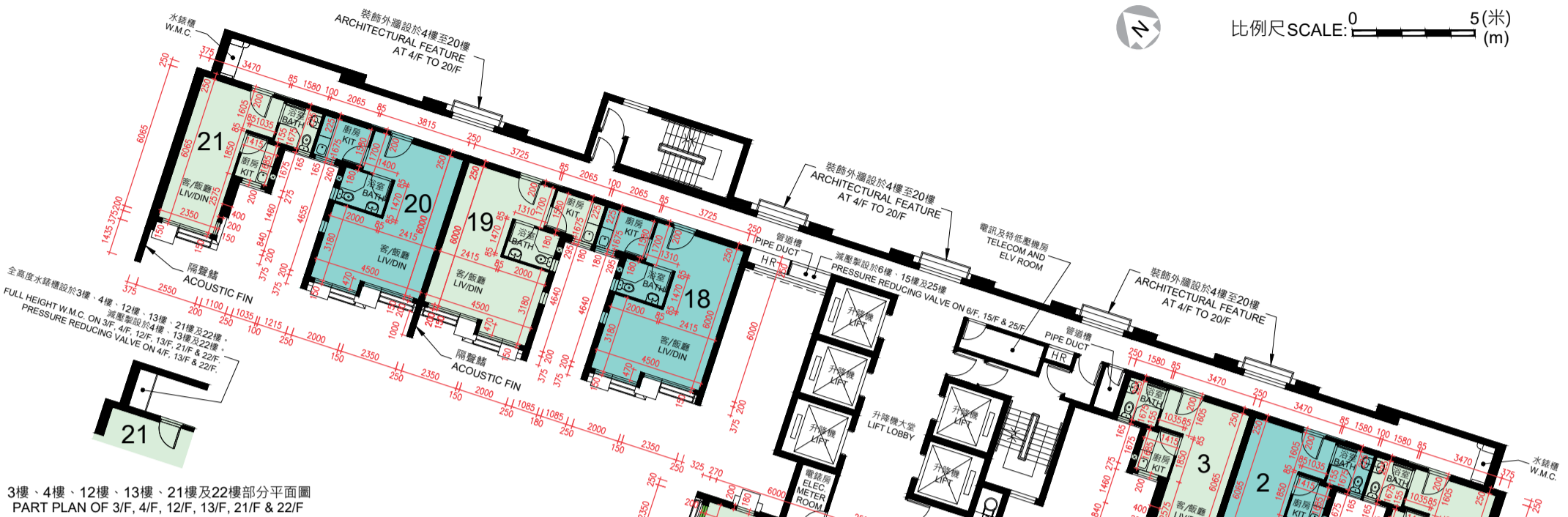
BATH	浴室	Bathroom
ELEC. METER ROOM	電錶房	Electrical Meter Room
HR	消防喉轆	Hose Reel
KIT	廚房	Kitchen
LIV/DIN	客/飯廳	Living/Dining Room
RS & MRR	垃圾及物料回收室	Refuse Storage and Material Recovery Room
TELECOM AND ELV ROOM	電訊及特低壓機房	Telecommunications and Extra Low Voltage Room
W.M.C.	水錶櫃	Water Meter Cupboard

# C座標準樓層平面圖 (4樓至36樓)

## Block C Typical Floor Plan (4/F - 36/F)



比例尺 SCALE: 0 5(米) (m)



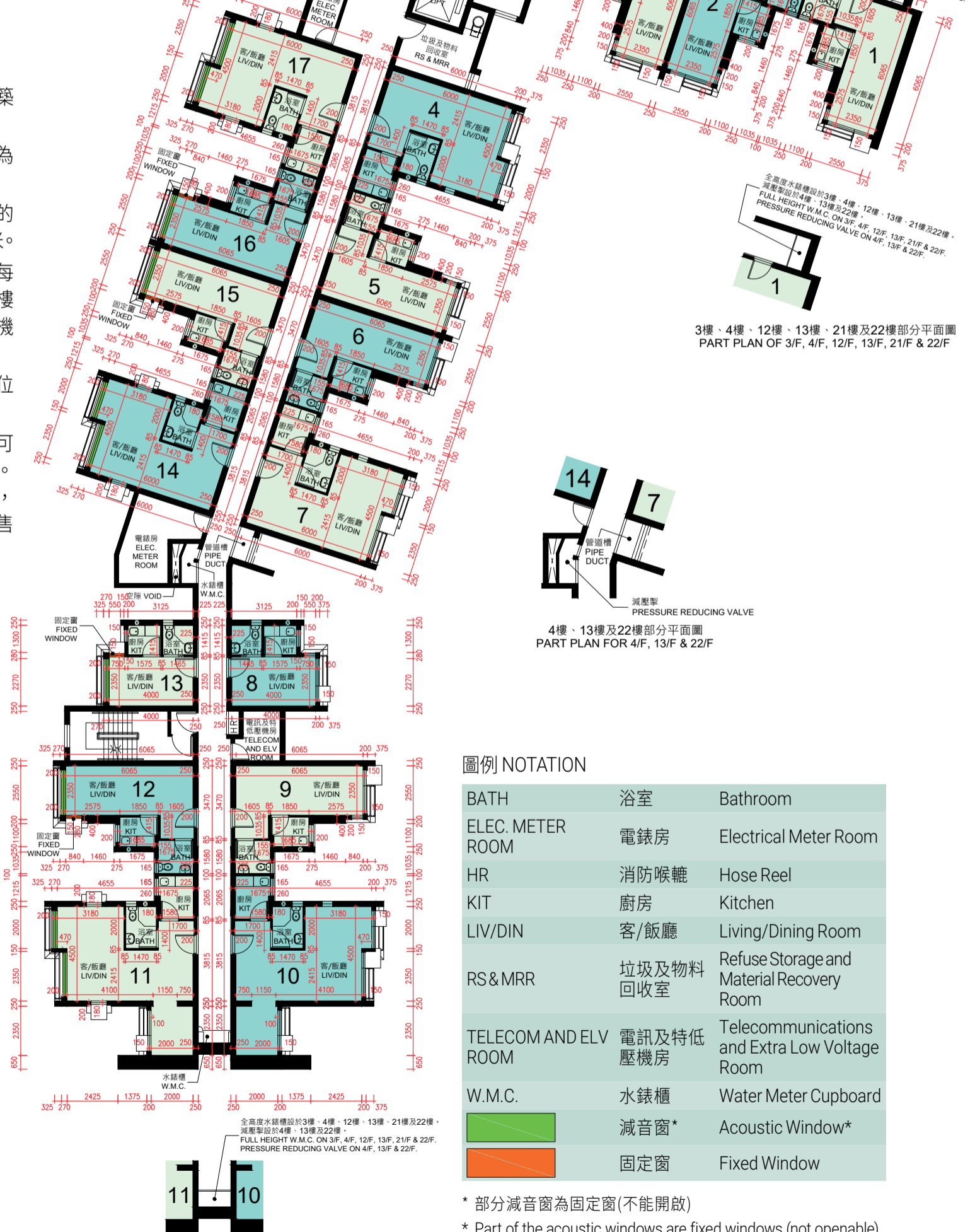
3樓、4樓、12樓、13樓、21樓及22樓部分平面圖  
PART PLAN OF 3/F, 4/F, 12/F, 13/F, 21/F & 22/F

註：

1. 平面圖所列之數字為以毫米標示之建築結構尺寸。
2. 每個住宅物業的層與層之間的高度為2.75米。
3. 每個住宅物業的樓板(不包括灰泥)的厚度為160毫米、195毫米及250毫米。
4. 大廈設有5部升降機。3樓至18樓每個住宅樓層均有2部升降機到達。19樓至38樓每個住宅樓層均有3部升降機到達。
5. 為減低道路交通噪音的影響，部分單位將設有減音窗及/或固定窗。
6. 此標準樓層平面圖是根據揀選一張可顯示每層最多住宅單位的圖則而選定。其他位於其餘樓層的住宅單位平面圖，請參閱將在選購單位日期前提供的售樓說明書。

Notes:

1. The dimensions on the floor plan are all structural dimensions in millimetre.
2. The floor-to-floor height of each residential property is 2.75m.
3. The thicknesses of the floor slabs (excluding plaster) of each residential property are 160mm, 195mm and 250mm.
4. There are 5 lifts in the building. Each residential floor on 3/F to 18/F is served by 2 lifts. Each residential floor on 19/F to 38/F is served by 3 lifts.
5. In order to mitigate the impact of road traffic noise, acoustic windows and/or fixed windows are provided for some flats.
6. This Typical Floor Plan is selected on the basis of selecting one floor plan which shows the most number of residential flats per floor. For floor plans of other residential flats on the remaining floors, please refer to the sales brochure which will be available before the date of flat selection.



### 圖例 NOTATION

BATH	浴室	Bathroom
ELEC. METER ROOM	電錶房	Electrical Meter Room
HR	消防喉轆	Hose Reel
KIT	廚房	Kitchen
LIV/DIN	客/飯廳	Living/Dining Room
RS & MRR	垃圾及物料回收室	Refuse Storage and Material Recovery Room
TELECOM AND ELV ROOM	電訊及特低壓機房	Telecommunications and Extra Low Voltage Room
W.M.C.	水錶櫃	Water Meter Cupboard
	減音窗*	Acoustic Window*
	固定窗	Fixed Window

\* 部分減音窗為固定窗(不能開啟)

\* Part of the acoustic windows are fixed windows (not openable)

3樓、4樓、12樓、13樓、21樓及22樓部分平面圖  
PART PLAN OF 3/F, 4/F, 12/F, 13/F, 21/F & 22/F