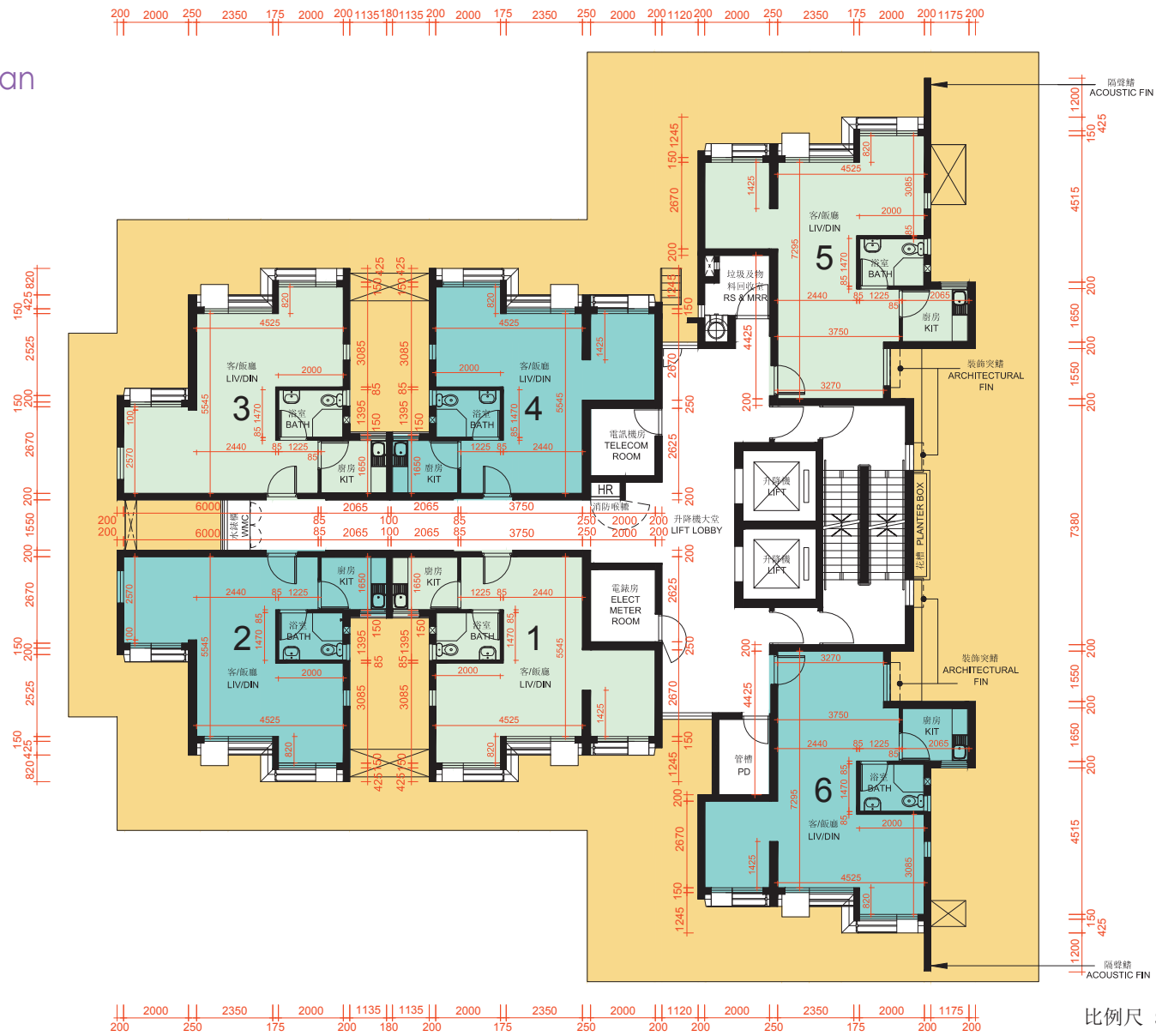


# 發展項目的住宅物業的樓面平面圖

## Floor Plans of Residential Properties in the Development

A座1樓平面圖  
Block A 1/F Floor Plan



比例尺 SCALE: 0 5(米)  
(m)

## 圖例 Notation

BATH	浴室	Bathroom
ELECT METER ROOM	電錶房	Electrical Meter Room
HR	消防喉轆	Hose Reel
KIT	廚房	Kitchen
LIV/DIN	客/飯廳	Living/Dining Room
PD	管槽	Pipe Duct
RS & MRR	垃圾及物料回收室	Refuse Storage and Material Recovery Room
TELECOM ROOM	電訊機房	Telecommunication Room
WMC	水錶櫃	Water Meter Cupboard
	簷篷/平台	Canopy / Flat Roof
	有蓋設備維修通道	Services Opening with Cover

1. 每個住宅物業的層與層之間的高度為2.75米。
2. 每個住宅物業的樓板（不包括灰泥）的厚度為160毫米及215毫米。
3. 因住宅物業的較高樓層的結構牆的厚度遞減，較高樓層的內部面積，一般比較低樓層的內部面積稍大。（不適用於該發展項目）

1. The floor-to-floor height of each residential property is 2.75m.
2. The thicknesses of the floor slabs (excluding plaster) of each residential property are 160mm and 215mm.
3. The internal areas of the residential properties on the upper floors will generally be slightly larger than those on the lower floors because of the reducing thickness of the structural walls on the upper floors. (Not applicable to the Development)

註：

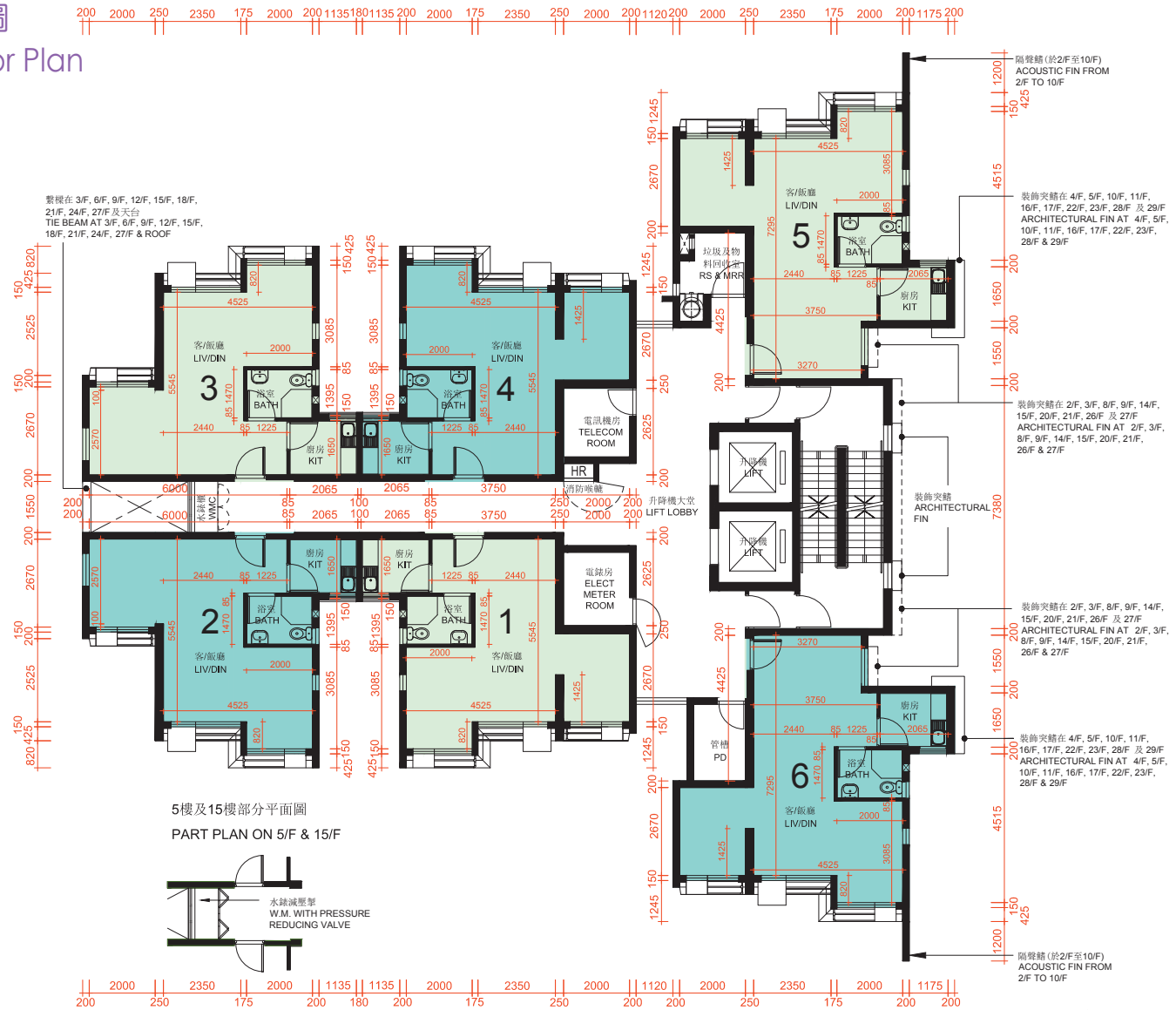
平面圖所列之數字為以毫米標示之建築結構尺寸。

Note:

The dimensions on the floor plan are all structural dimensions in millimetre.

發展項目的住宅物業的樓面平面圖  
Floor Plans of Residential Properties in the Development

A座2樓-29樓平面圖  
Block A 2/F-29/F Floor Plan



5樓及15樓部分平面圖  
PART PLAN ON 5/F & 15/F

比例尺 SCALE: 0 5(米)  
(m)

## 圖例 Notation

BATH	浴室	Bathroom
ELECT METER ROOM	電錶房	Electrical Meter Room
HR	消防喉轆	Hose Reel
KIT	廚房	Kitchen
LIV/DIN	客/飯廳	Living/Dining Room
PD	管槽	Pipe Duct
RS & MRR	垃圾及物料回收室	Refuse Storage and Material Recovery Room
TELECOM ROOM	電訊機房	Telecommunication Room
WMC	水錶櫃	Water Meter Cupboard

1. 每個住宅物業的層與層之間的高度為2.75米(29樓除外)。29樓每個住宅物業的層與層之間的高度為2.79米。
2. 每個住宅物業的樓板(不包括灰泥)的厚度為160毫米及215毫米(29樓除外)。29樓每個住宅物業的樓板(不包括灰泥)的厚度為200毫米。
3. 因住宅物業的較高樓層的結構牆的厚度遞減,較高樓層的內部面積,一般比較低樓層的內部面積稍大。(不適用於該發展項目)

註:

平面圖所列之數字為以毫米標示之建築結構尺寸。

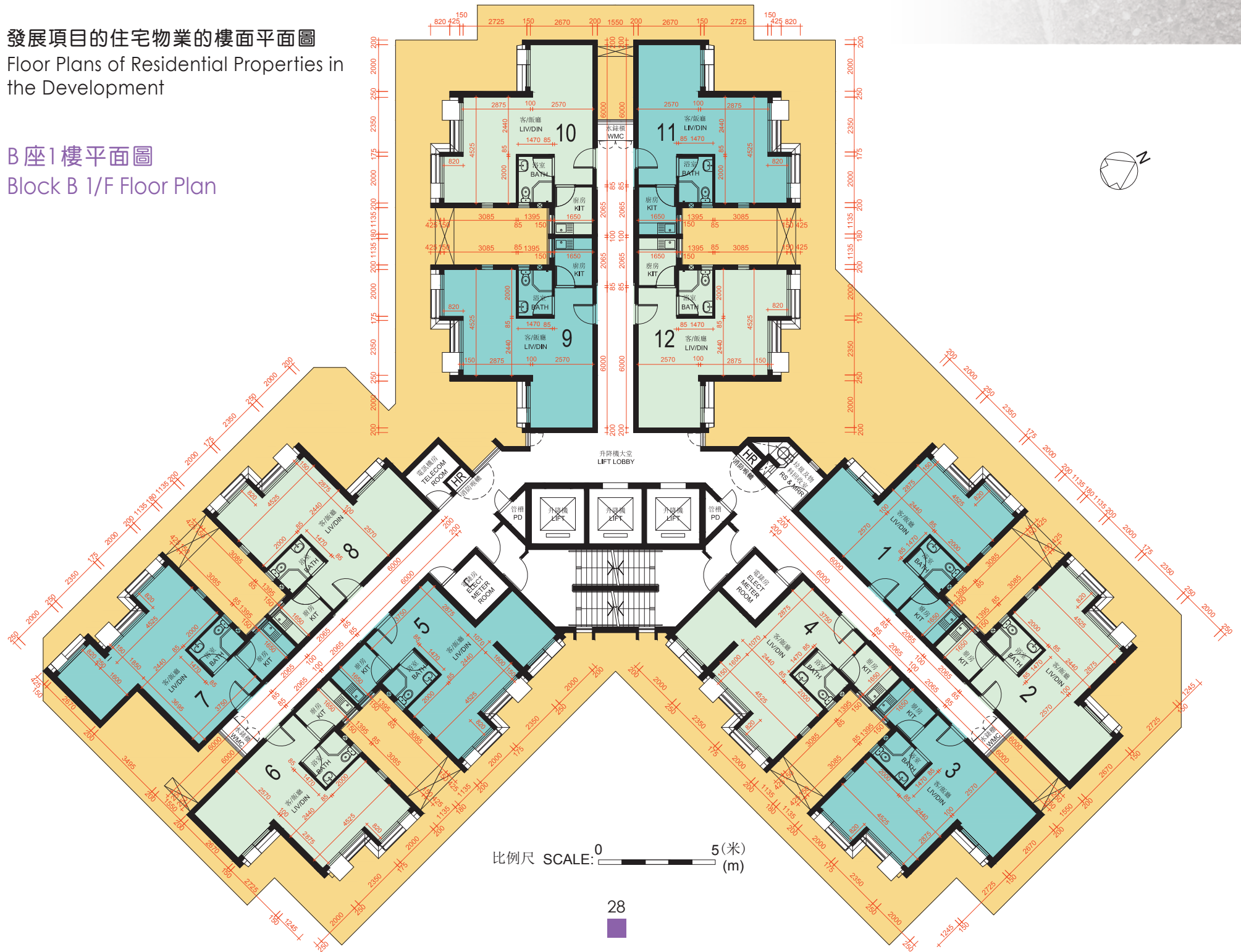
1. The floor-to-floor height of each residential property is 2.75m (except 29/F). The floor-to-floor height of each residential property on 29/F is 2.79m.
2. The thicknesses of the floor slabs (excluding plaster) of each residential property are 160mm and 215mm (except 29/F). The thickness of the floor slab (excluding plaster) of each residential property on 29/F is 200mm.
3. The internal areas of the residential properties on the upper floors will generally be slightly larger than those on the lower floors because of the reducing thickness of the structural walls on the upper floors. (Not applicable to the Development)

Note:

The dimensions on the floor plan are all structural dimensions in millimetre.

發展項目的住宅物業的樓面平面圖  
Floor Plans of Residential Properties in the Development

B座1樓平面圖  
Block B 1/F Floor Plan



## 圖例 Notation

BATH	浴室	Bathroom
ELECT METER ROOM	電錶房	Electrical Meter Room
HR	消防喉轆	Hose Reel
KIT	廚房	Kitchen
LIV/DIN	客/飯廳	Living/Dining Room
PD	管槽	Pipe Duct
RS & MRR	垃圾及物料回收室	Refuse Storage and Material Recovery Room
TELECOM ROOM	電訊機房	Telecommunication Room
WMC	水錶櫃	Water Meter Cupboard
	簷篷/平台	Canopy / Flat Roof
	有蓋設備維修通道	Services Opening with Cover

1. 每個住宅物業的層與層之間的高度為2.75米。
2. 每個住宅物業的樓板（不包括灰泥）的厚度為160毫米及215毫米。
3. 因住宅物業的較高樓層的結構牆的厚度遞減，較高樓層的內部面積，一般比較低樓層的內部面積稍大。（不適用於該發展項目）

1. The floor-to-floor height of each residential property is 2.75m.
2. The thicknesses of the floor slabs (excluding plaster) of each residential property are 160mm and 215mm.
3. The internal areas of the residential properties on the upper floors will generally be slightly larger than those on the lower floors because of the reducing thickness of the structural walls on the upper floors. (Not applicable to the Development)

註：

平面圖所列之數字為以毫米標示之建築結構尺寸。

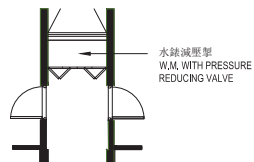
Note:

The dimensions on the floor plan are all structural dimensions in millimetre.

# 發展項目的住宅物業的樓面平面圖

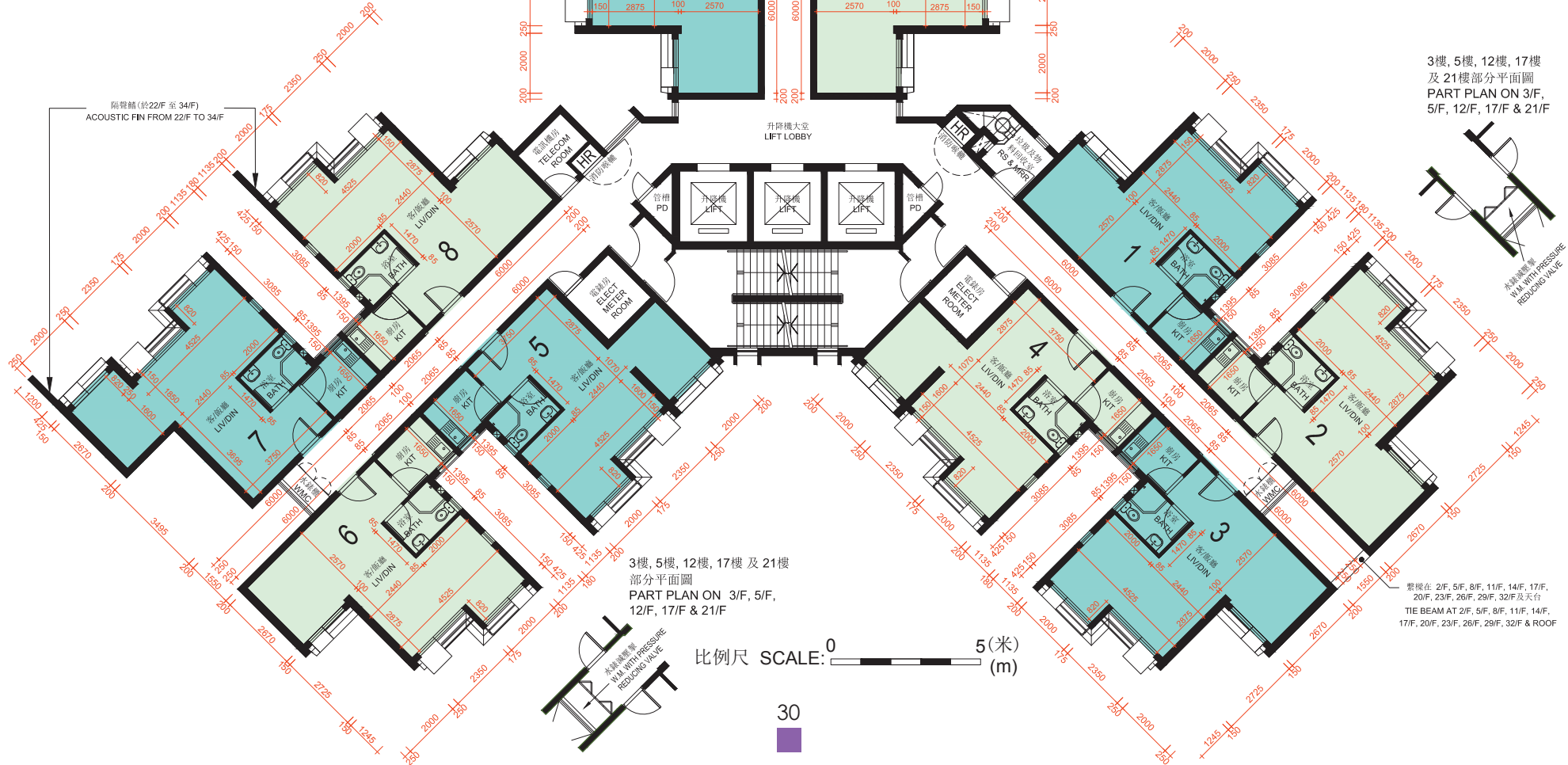
## Floor Plans of Residential Properties in the Development

3樓, 12樓 及 21樓部分平面圖  
PART PLAN ON 3/F, 12/F & 21/F



# B座2樓-34樓平面圖

## Block B 2/F - 34/F Floor Plan



## 圖例 Notation

BATH	浴室	Bathroom
ELECT METER ROOM	電錶房	Electrical Meter Room
HR	消防喉轆	Hose Reel
KIT	廚房	Kitchen
LIV/DIN	客/飯廳	Living/Dining Room
PD	管槽	Pipe Duct
RS & MRR	垃圾及物料回收室	Refuse Storage and Material Recovery Room
TELECOM ROOM	電訊機房	Telecommunication Room
WMC	水錶櫃	Water Meter Cupboard

1. 每個住宅物業的層與層之間的高度為2.75米(34樓除外)。34樓每個住宅物業的層與層之間的高度為2.79米。
2. 每個住宅物業的樓板(不包括灰泥)的厚度為160毫米及215毫米(34樓除外)。34樓每個住宅物業的樓板(不包括灰泥)的厚度為200毫米。
3. 因住宅物業的較高樓層的結構牆的厚度遞減,較高樓層的內部面積,一般比較低樓層的內部面積稍大。(不適用於該發展項目)

1. The floor-to-floor height of each residential property is 2.75m (except 34/F). The floor-to-floor height of each residential property on 34/F is 2.79m.
2. The thicknesses of the floor slabs (excluding plaster) of each residential property are 160mm and 215mm (except 34/F). The thickness of the floor slab (excluding plaster) of each residential property on 34/F is 200mm.
3. The internal areas of the residential properties on the upper floors will generally be slightly larger than those on the lower floors because of the reducing thickness of the structural walls on the upper floors. (Not applicable to the Development)

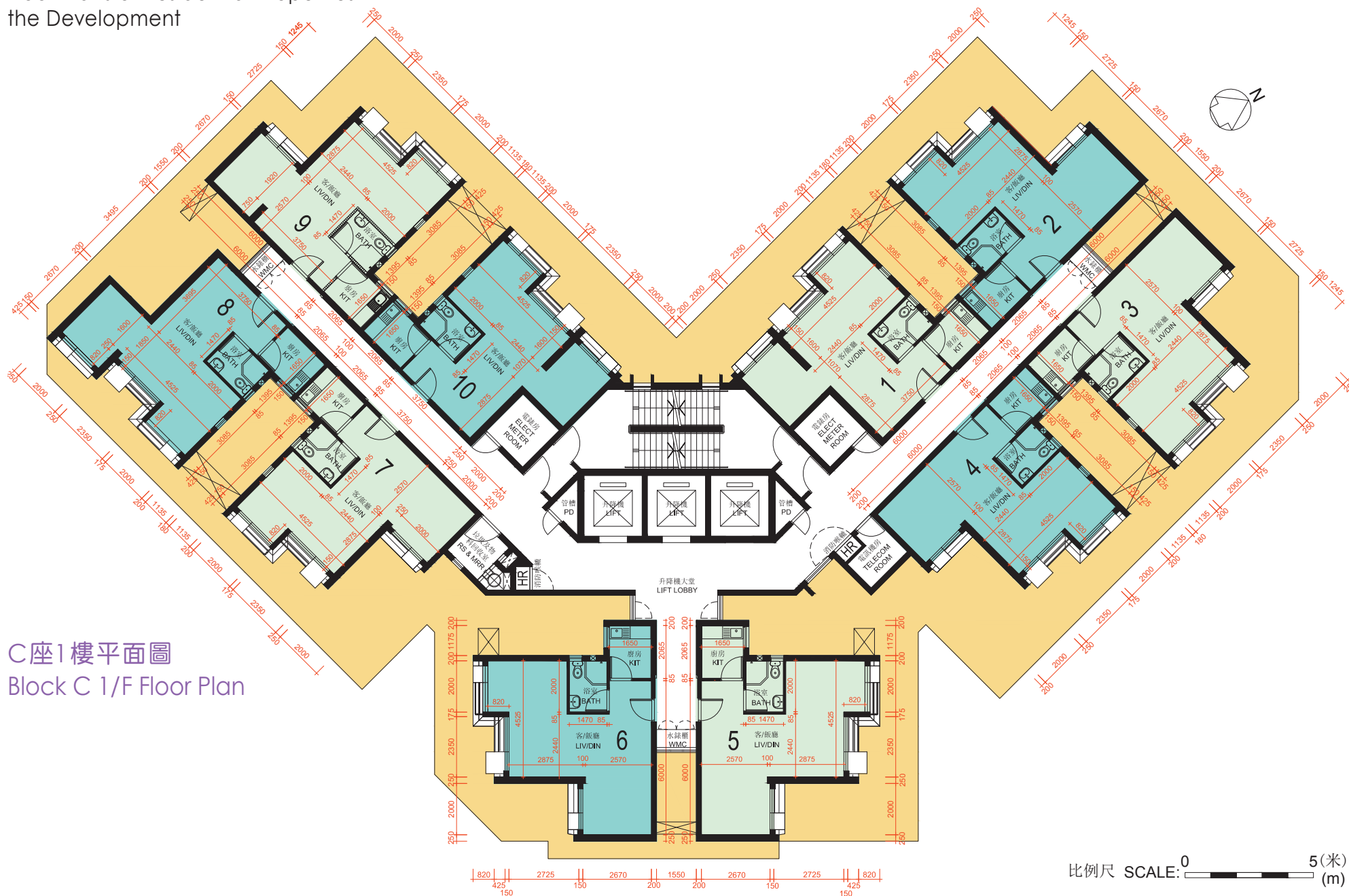
註:

平面圖所列之數字為以毫米標示之建築結構尺寸。

Note:

The dimensions on the floor plan are all structural dimensions in millimetre.

發展項目的住宅物業的樓面平面圖  
 Floor Plans of Residential Properties in  
 the Development



C座1樓平面圖  
 Block C 1/F Floor Plan

## 圖例 Notation

BATH	浴室	Bathroom
ELECT METER ROOM	電錶房	Electrical Meter Room
HR	消防喉轆	Hose Reel
KIT	廚房	Kitchen
LIV/DIN	客/飯廳	Living/Dining Room
PD	管槽	Pipe Duct
RS & MRR	垃圾及物料回收室	Refuse Storage and Material Recovery Room
TELECOM ROOM	電訊機房	Telecommunication Room
WMC	水錶櫃	Water Meter Cupboard
	簷篷/平台	Canopy / Flat Roof
	有蓋設備維修通道	Services Opening with Cover

1. 每個住宅物業的層與層之間的高度為2.75米。
2. 每個住宅物業的樓板（不包括灰泥）的厚度為160毫米及215毫米。
3. 因住宅物業的較高樓層的結構牆的厚度遞減，較高樓層的內部面積，一般比較低樓層的內部面積稍大。（不適用於該發展項目）

1. The floor-to-floor height of each residential property is 2.75m.
2. The thicknesses of the floor slabs (excluding plaster) of each residential property are 160mm and 215mm.
3. The internal areas of the residential properties on the upper floors will generally be slightly larger than those on the lower floors because of the reducing thickness of the structural walls on the upper floors. (Not applicable to the Development)

註：

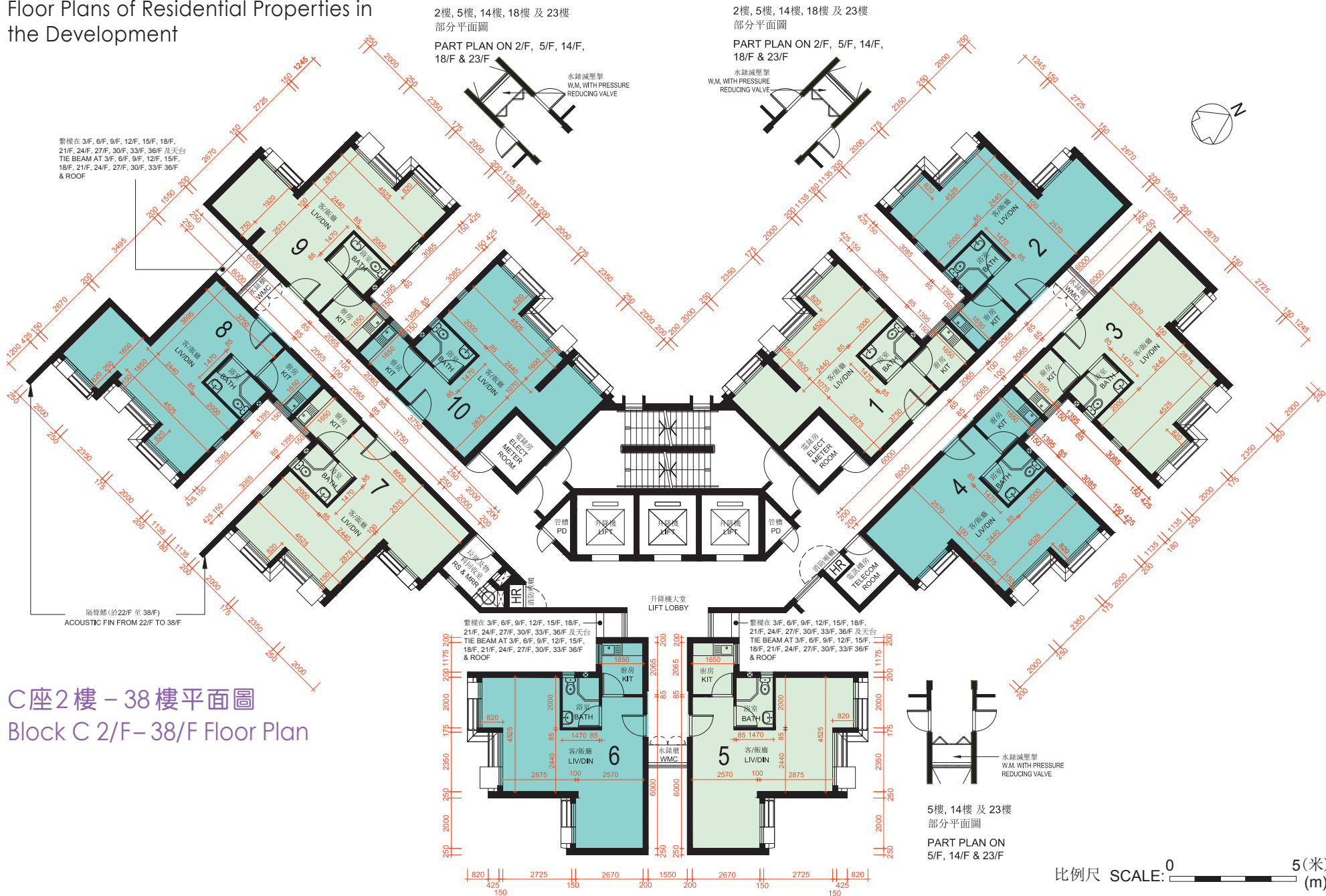
平面圖所列之數字為以毫米標示之建築結構尺寸。

Note:

The dimensions on the floor plan are all structural dimensions in millimetre.

# 發展項目的住宅物業的樓面平面圖

## Floor Plans of Residential Properties in the Development



## 圖例 Notation

BATH	浴室	Bathroom
ELECT METER ROOM	電錶房	Electrical Meter Room
HR	消防喉轆	Hose Reel
KIT	廚房	Kitchen
LIV/DIN	客/飯廳	Living/Dining Room
PD	管槽	Pipe Duct
RS & MRR	垃圾及物料回收室	Refuse Storage and Material Recovery Room
TELECOM ROOM	電訊機房	Telecommunication Room
WMC	水錶櫃	Water Meter Cupboard

1. 每個住宅物業的層與層之間的高度為2.75米(38樓除外)。38樓每個住宅物業的層與層之間的高度為2.79米。
2. 每個住宅物業的樓板(不包括灰泥)的厚度為160毫米及215毫米(38樓除外)。38樓每個住宅物業的樓板(不包括灰泥)的厚度為200毫米。
3. 因住宅物業的較高樓層的結構牆的厚度遞減,較高樓層的內部面積,一般比較低樓層的內部面積稍大。(不適用於該發展項目)

1. The floor-to-floor height of each residential property is 2.75m (except 38/F). The floor-to-floor height of each residential property on 38/F is 2.79m.
2. The thicknesses of the floor slabs (excluding plaster) of each residential property are 160mm and 215mm (except 38/F). The thickness of the floor slab (excluding plaster) of each residential property on 38/F is 200mm.
3. The internal areas of the residential properties on the upper floors will generally be slightly larger than those on the lower floors because of the reducing thickness of the structural walls on the upper floors. (Not applicable to the Development)

註:

平面圖所列之數字為以毫米標示之建築結構尺寸。

Note:

The dimensions on the floor plan are all structural dimensions in millimetre.

# 發展項目中的住宅物業的面積

## Area of Residential Properties in the Development

物業的描述 Description of Residential Property			實用面積 (包括露台、工作平台及陽台 (如有)) 平方米 (平方呎) Saleable Area (including balcony, utility platform and verandah, if any) sq.m. (sq.ft.)	其他指明項目的面積 (不計算入實用面積) 平方米 (平方呎) Area of other specified items (Not included in the Saleable Area) sq.m. (sq.ft.)										
大廈名稱 Block Name	樓層 Floor	單位 Unit		空調機房 Air-conditioning plant room	窗台 Bay window	閣樓 Cockloft	平台 Flat roof	花園 Garden	停車位 Parking space	天台 Roof	梯屋 Stairhood	前庭 Terrace	庭院 Yard	
A座 Block A	1樓-29樓 1/F-29/F	1, 4	40.8 (439) 露台 Balcony: - 工作平台 Utility Platform: - 陽台 Verandah: -	-	-	-	-	-	-	-	-	-	-	
		2, 3	40.7 (438) 露台 Balcony: - 工作平台 Utility Platform: - 陽台 Verandah: -	-	-	-	-	-	-	-	-	-	-	-
		5, 6	47.5 (511) 露台 Balcony: - 工作平台 Utility Platform: - 陽台 Verandah: -	-	-	-	-	-	-	-	-	-	-	-
B座 Block B	1樓-34樓 1/F-34/F	1, 4, 5 8, 9, 10 11, 12	40.7 (438) 露台 Balcony: - 工作平台 Utility Platform: - 陽台 Verandah: -	-	-	-	-	-	-	-	-	-	-	
		2, 3, 6	40.8 (439) 露台 Balcony: - 工作平台 Utility Platform: - 陽台 Verandah: -	-	-	-	-	-	-	-	-	-	-	-
		7	41.0 (441) 露台 Balcony: - 工作平台 Utility Platform: - 陽台 Verandah: -	-	-	-	-	-	-	-	-	-	-	-

上述每個住宅物業的實用面積是按照《一手住宅物業銷售條例》第8條計算得出。

The saleable area of each residential property listed above is calculated in accordance with Section 8 of the Residential Properties (First-hand Sales) Ordinance.

註： 上述以平方呎列明之面積是以1平方米=10.764平方呎換算，並四捨五入至整數平方呎。

Note: The areas as specified above in square feet are converted at a rate of 1 square metre = 10.764 square feet and rounded to the nearest whole square foot.

發展項目中的住宅物業的面積  
Area of Residential Properties in the Development

物業的描述 Description of Residential Property			實用面積 (包括露台、工作平台及陽台 (如有)) 平方米 (平方呎) Saleable Area (including balcony, utility platform and verandah, if any) sq.m. (sq.ft.)	其他指明項目的面積 (不計算入實用面積) 平方米 (平方呎) Area of other specified items (Not included in the Saleable Area) sq.m. (sq.ft.)									
大廈名稱 Block Name	樓層 Floor	單位 Unit		空調機房 Air-conditioning plant room	窗台 Bay window	閣樓 Cockloft	平台 Flat roof	花園 Garden	停車位 Parking space	天台 Roof	梯屋 Stairhood	前庭 Terrace	庭院 Yard
C Block C	1樓 – 38樓 1/F – 38/F	1, 4 7, 10	40.7 (438) 露台 Balcony: – 工作平台 Utility Platform: – 陽台 Verandah: –	–	–	–	–	–	–	–	–	–	–
		2, 3, 9	40.8 (439) 露台 Balcony: – 工作平台 Utility Platform: – 陽台 Verandah: –	–	–	–	–	–	–	–	–	–	–
		5, 6	41.2 (443) 露台 Balcony: – 工作平台 Utility Platform: – 陽台 Verandah: –	–	–	–	–	–	–	–	–	–	–
		8	41.0 (441) 露台 Balcony: – 工作平台 Utility Platform: – 陽台 Verandah: –	–	–	–	–	–	–	–	–	–	–

上述每個住宅物業的實用面積是按照《一手住宅物業銷售條例》第8條計算得出。

The saleable area of each residential property listed above is calculated in accordance with Section 8 of the Residential Properties (First-hand Sales) Ordinance.

註： 上述以平方呎列明之面積是以1平方米=10.764平方呎換算，並四捨五入至整數平方呎。

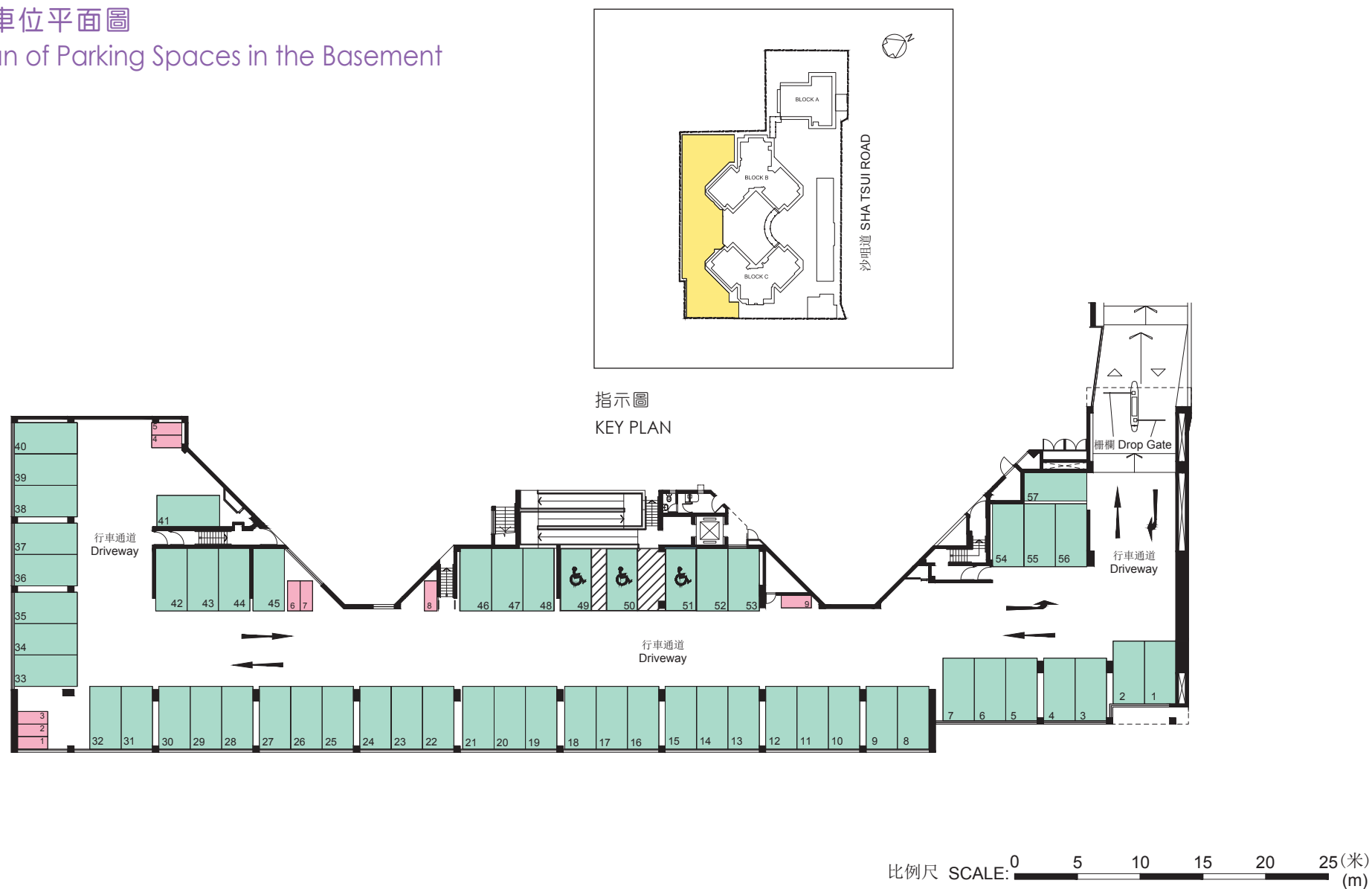
Note: The areas as specified above in square feet are converted at a rate of 1 square metre = 10.764 square feet and rounded to the nearest whole square foot.

# 發展項目中的停車位的樓面平面圖

## Floor Plans of Parking Spaces in the Development

### 地庫停車位平面圖

#### Floor Plan of Parking Spaces in the Basement

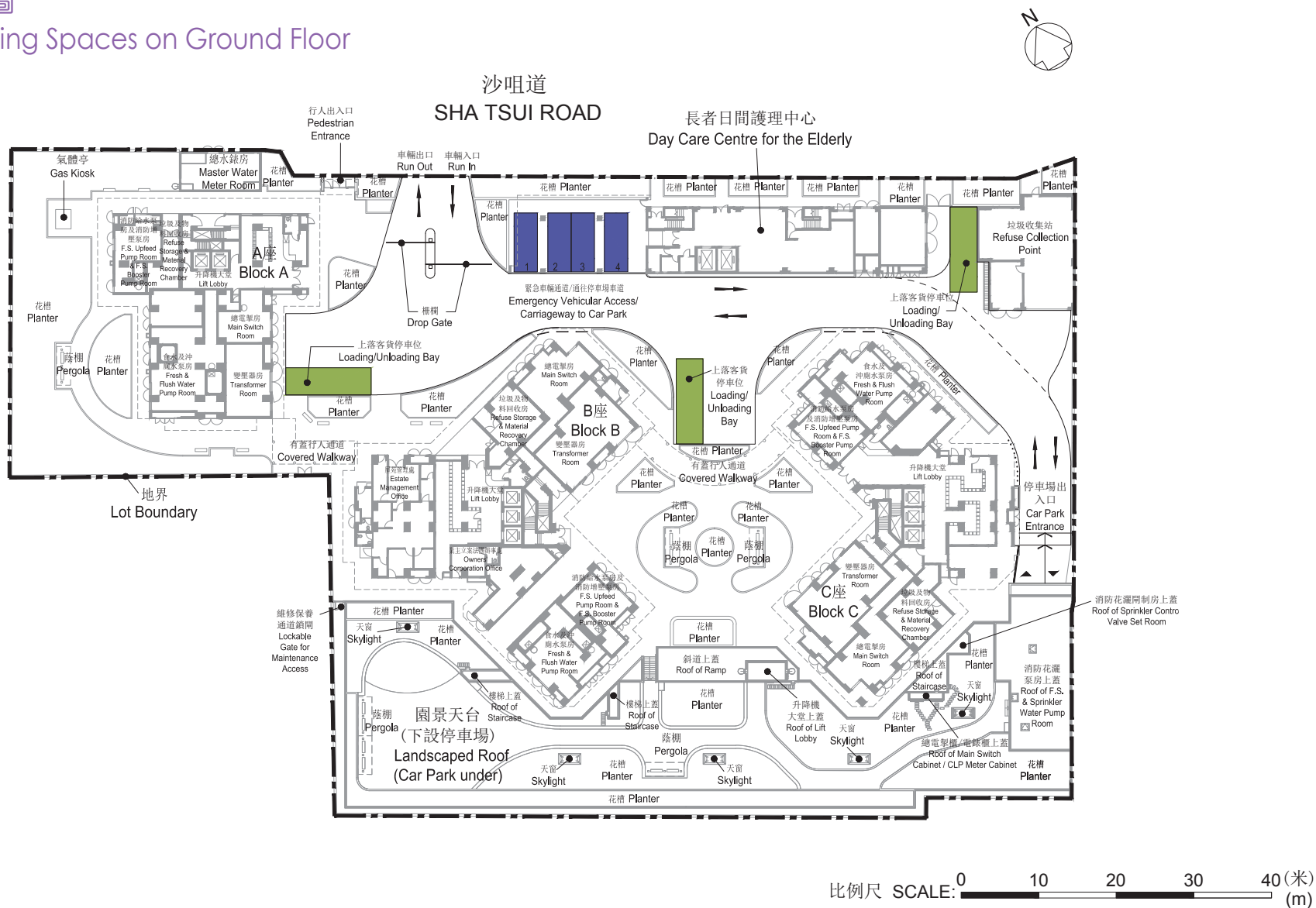


圖例 Notation

停車位類別 Category of Parking Space	數目 Number	每個停車位的尺寸(長×寬)(米) Dimensions of each parking space (L x W) (m.)	每個停車位的面積(平方米) Area of each parking space (sq.m.)
 汽車停車位 Car Parking Spaces	54	5.0 x 2.5	12.50
 汽車停車位(暢通易達停車位) Car Parking Spaces (Accessible Parking Spaces)	3	5.0 x 2.5	12.50
 電單車停車位 Motorcycle Parking Spaces	9	2.4 x 1.0	2.40

發展項目中的停車位的樓面平面圖  
Floor Plans of Parking Spaces in the Development

地下停車位平面圖  
Floor Plan of Parking Spaces on Ground Floor



圖例 Notation

停車位類別 Category of Parking Space	數目 Number	每個停車位的尺寸(長×寬)(米) Dimensions of each parking space (L x W) (m.)	每個停車位的面積(平方米) Area of each parking space (sq.m.)
 客貨車停車位 Light Goods Vehicle Parking Spaces	4	7.6 x 3.0	22.80
 上落客貨停車位 Loading / Unloading Bays	3	11.0 x 3.5	38.50

# 臨時買賣合約的摘要

## Summary of Preliminary Agreement for Sale and Purchase

不適用

Not applicable