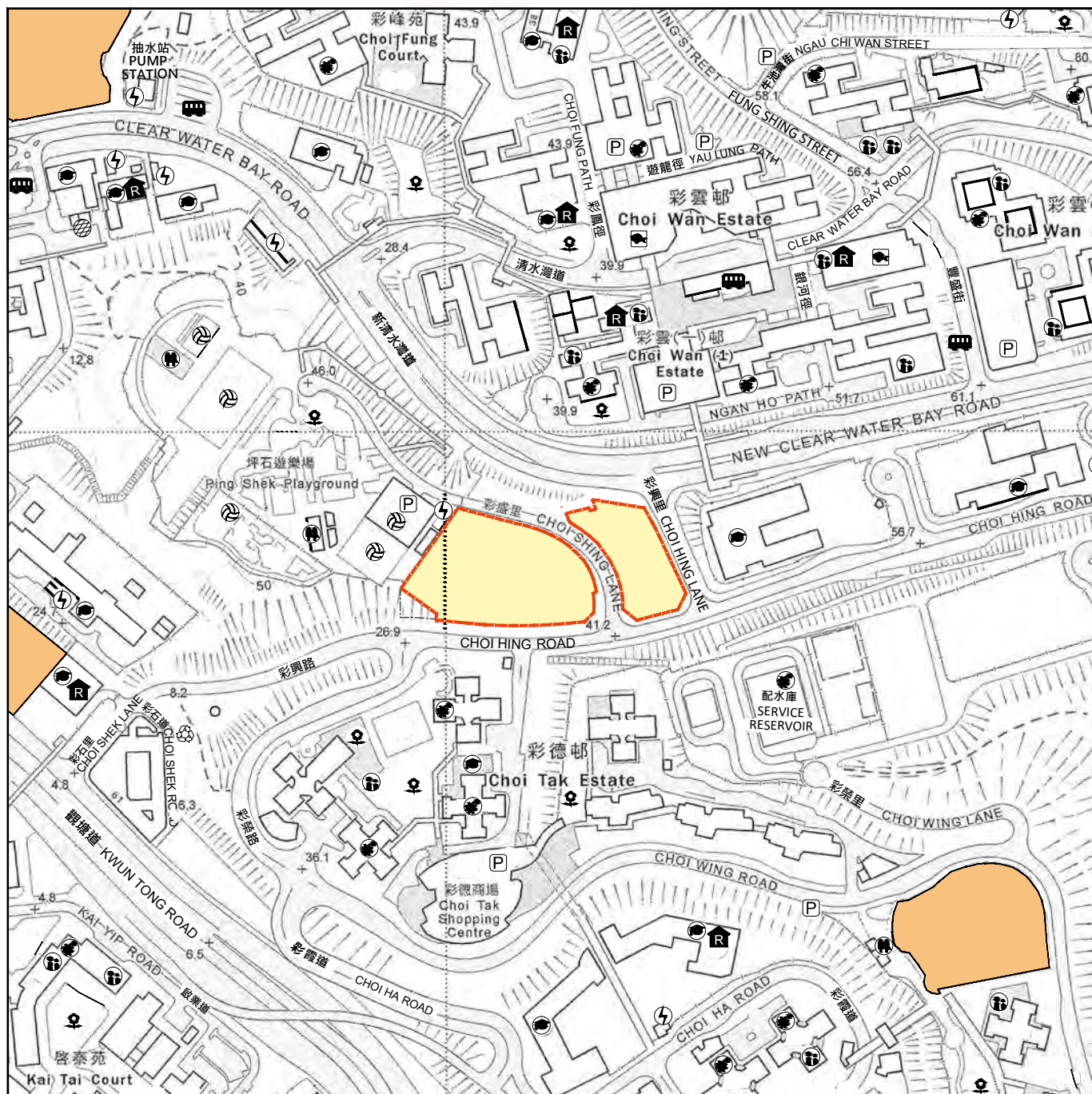


32 參考圖

Reference Plan



比例尺 SCALE: 0 50 100 150 200 250 (米) (m)



 彩興苑
Choi Hing Court

圖例 NOTATION

	垃圾收集站 A Refuse Collection Point		宗教場所(包括教堂、廟宇及祠堂) A Religious Institution (including a Church, a Temple and a Tsz Tong)
	市場(包括濕貨市場及批發市場) A Market (including a Wet Market and a Wholesale Market)		學校(包括幼稚園) A School (including a Kindergarten)
	發電廠(包括電力分站) A Power Plant (including Electricity Sub-stations)		社會福利設施(包括老人中心及弱智人士護理院) Social Welfare Facilities (including an Elderly Centre and a Home for the Mentally Disabled)
	公眾停車場(包括貨車停泊處) A Public Carpark (including a Lorry Park)		體育設施(包括運動場及游泳池) Sports Facilities (including a Sports Ground and a Swimming Pool)
	公廁 A Public Convenience		公園 A Public Park
	公共交通總站(包括鐵路車站) A Public Transport Terminal (including a Rail Station)		香港鐵路的通風井 A Ventilation Shaft for the Mass Transit Railway
	公用事業設施裝置 A Public Utility Installation		施工中 Works in Progress

此參考圖參考日期為2019年12月4日之測繪圖(編號為11-NE-A)製作,有需要處經修正處理。

地圖版權屬香港特區政府,經地政總署准許複印,版權特許編號104/2019。

The Reference Plan is prepared with reference to Survey Sheet No. 11-NE-A dated 4 December 2019, with adjustments where necessary.

The map reproduced with permission of the Director of Lands. © The Government of the Hong Kong SAR. Licence No. 104/2019.

註:



賣方建議買方到該發展項目作實地考察,以對該發展項目、其周邊地區環境及附近的公共設施有較佳的了解。

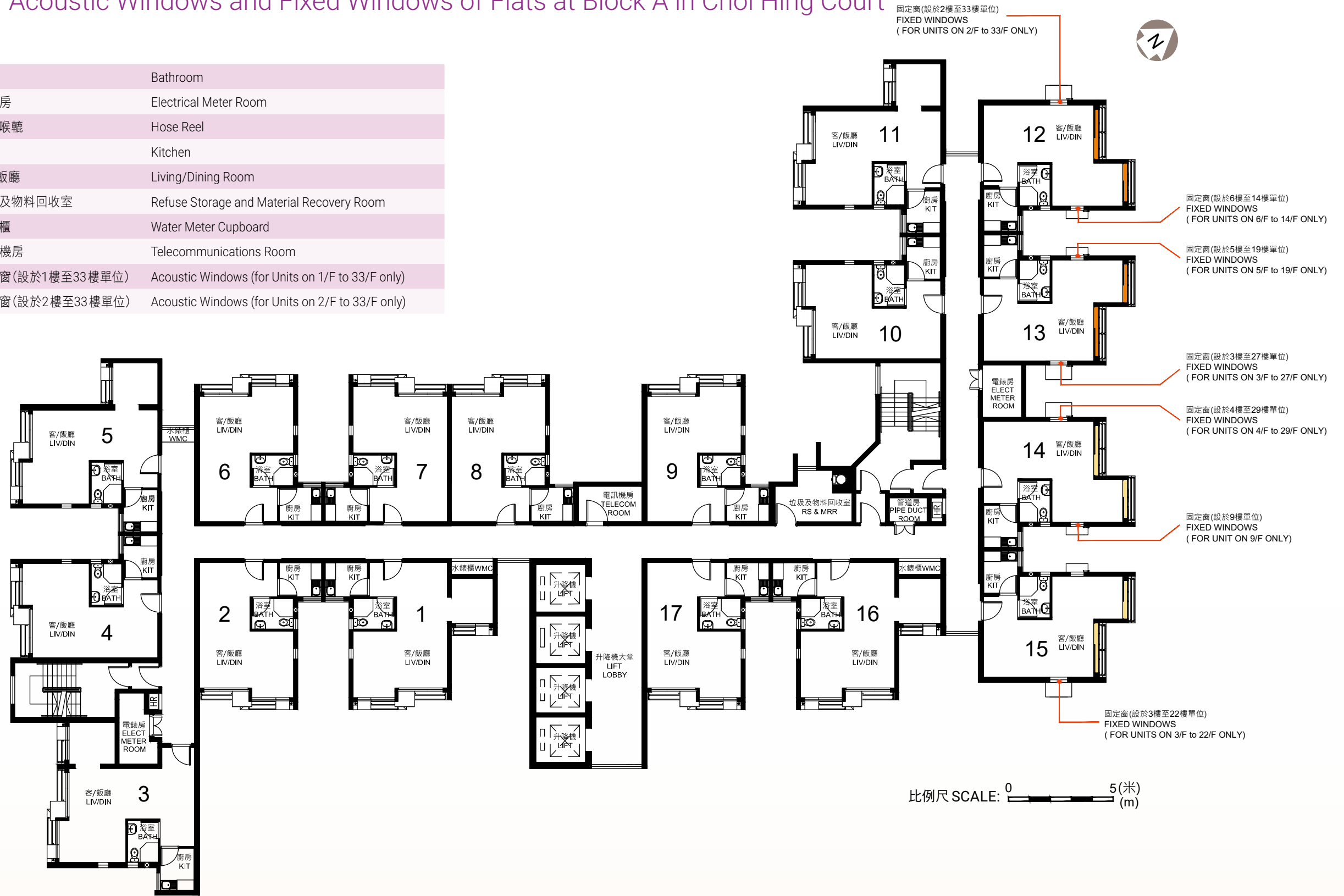
Note:

The Vendor advises purchasers to conduct on-site visit for a better understanding of the Development, its surrounding environment and the public facilities nearby.

彩興苑A座單位的減音窗及固定窗的參考圖
Reference Plan for Acoustic Windows and Fixed Windows of Flats at Block A in Choi Hing Court

圖例 NOTATION

BATH	浴室	Bathroom
ELECT METER ROOM	電錶房	Electrical Meter Room
HR	消防喉轆	Hose Reel
KIT	廚房	Kitchen
LIV/DIN	客/飯廳	Living/Dining Room
RS & MRR	垃圾及物料回收室	Refuse Storage and Material Recovery Room
WMC	水錶櫃	Water Meter Cupboard
TELECOM ROOM	電訊機房	Telecommunications Room
	減音窗(設於1樓至33樓單位)	Acoustic Windows (for Units on 1/F to 33/F only)
	減音窗(設於2樓至33樓單位)	Acoustic Windows (for Units on 2/F to 33/F only)



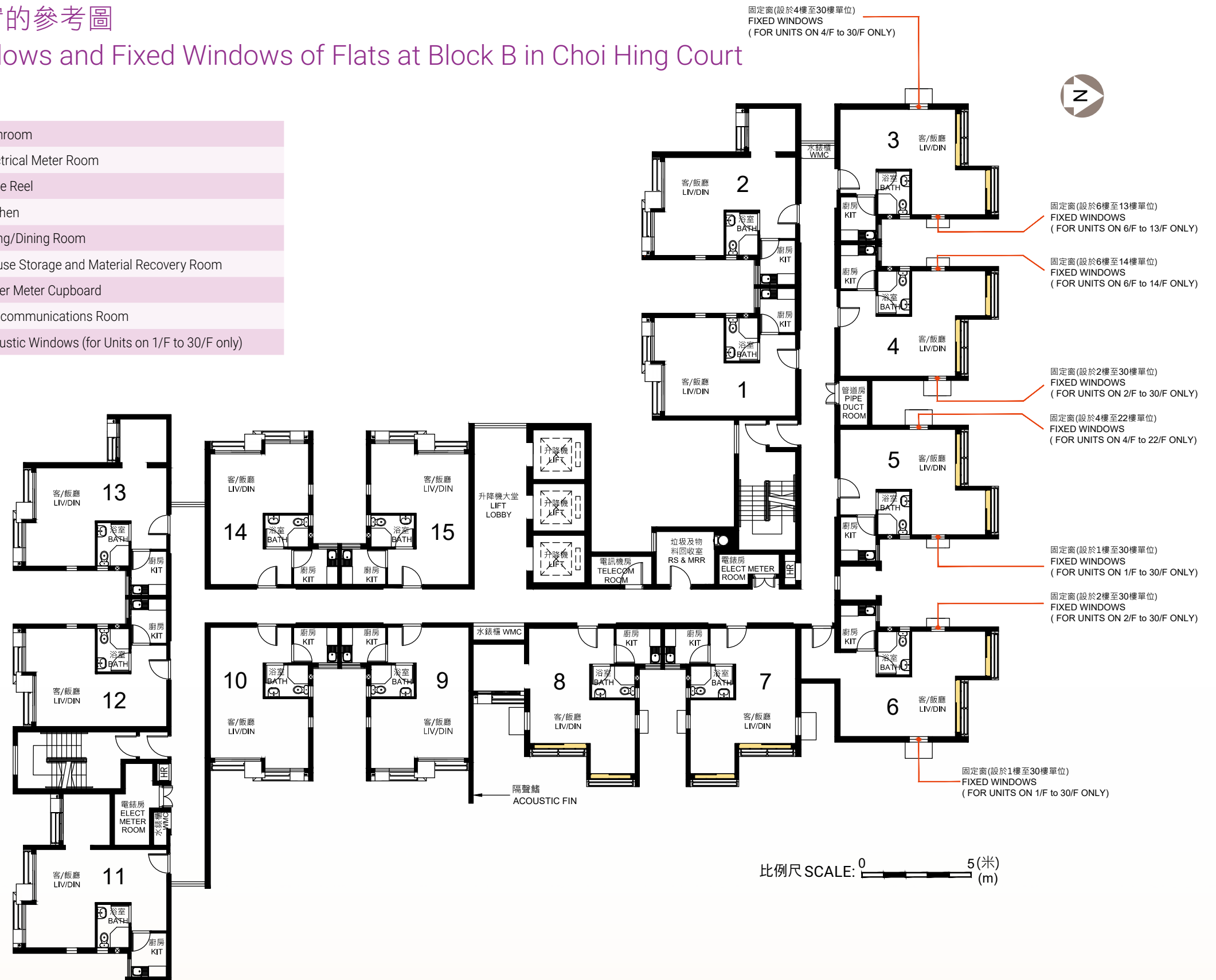
比例尺 SCALE: 0 5(米) (m)

彩興苑B座單位的減音窗及固定窗的參考圖

Reference Plan for Acoustic Windows and Fixed Windows of Flats at Block B in Choi Hing Court

圖例 NOTATION

BATH	浴室	Bathroom
ELECT METER ROOM	電錶房	Electrical Meter Room
HR	消防喉轆	Hose Reel
KIT	廚房	Kitchen
LIV/DIN	客/飯廳	Living/Dining Room
RS & MRR	垃圾及物料回收室	Refuse Storage and Material Recovery Room
WMC	水錶櫃	Water Meter Cupboard
TELECOM ROOM	電訊機房	Telecommunications Room
	減音窗(設於1樓至30樓單位)	Acoustic Windows (for Units on 1/F to 30/F only)



彩興苑C座單位的減音窗及固定窗的參考圖

Reference Plan for Acoustic Windows and Fixed Windows of Flats at Block C in Choi Hing Court

圖例 NOTATION

BATH	浴室	Bathroom
ELECT METER ROOM	電錶房	Electrical Meter Room
HR	消防喉轆	Hose Reel
KIT	廚房	Kitchen
LIV/DIN	客/飯廳	Living/Dining Room
RS & MRR	垃圾及物料回收室	Refuse Storage and Material Recovery Room
WMC	水錶櫃	Water Meter Cupboard
TELECOM ROOM	電訊機房	Telecommunications Room
	減音窗(設於1樓至27樓單位)	Acoustic Windows (for Units on 1/F to 27/F only)

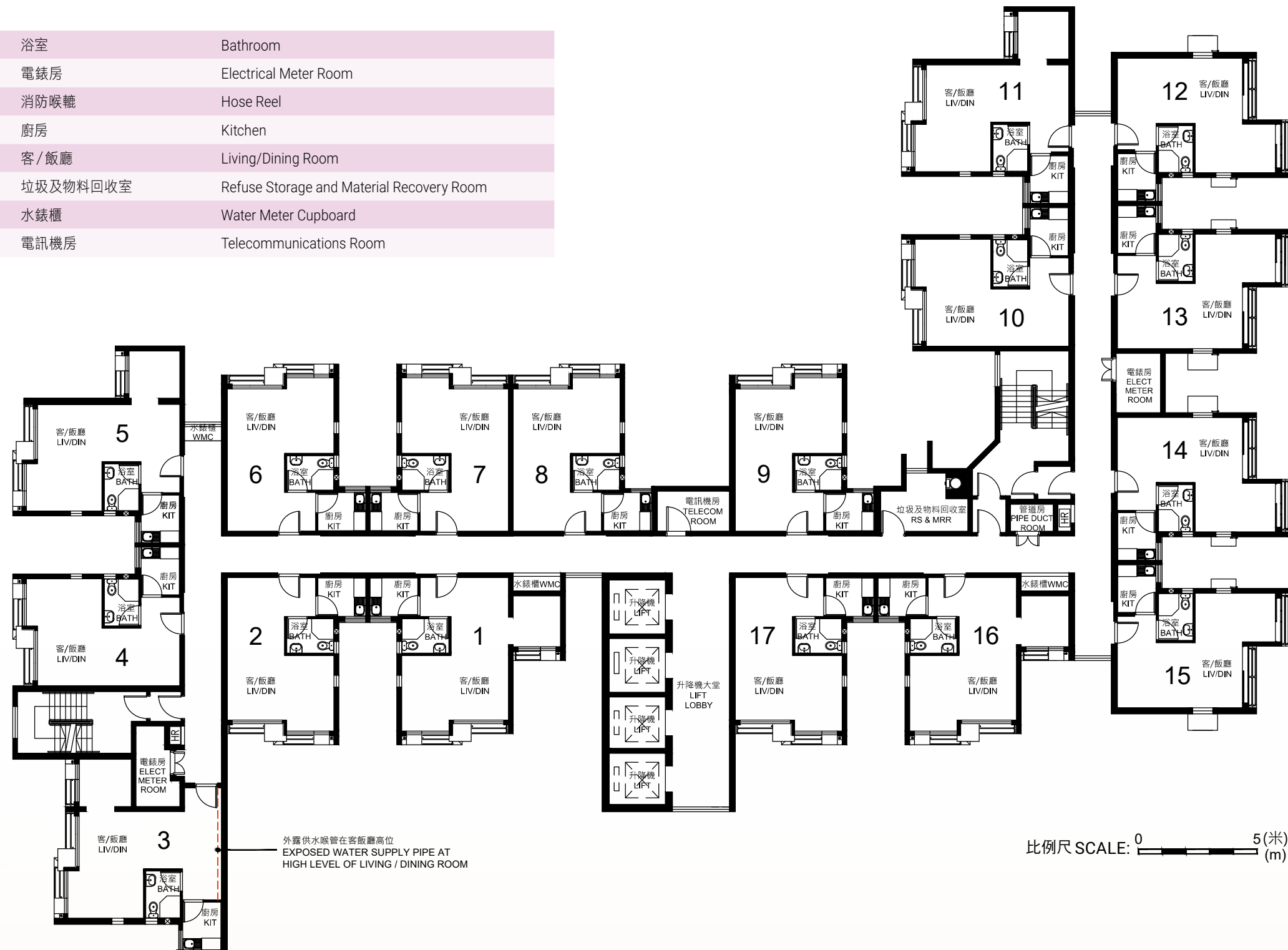


彩興苑A座3號單位客/飯廳內的外露供水喉管參考圖

Reference Plan for Exposed Water Supply Pipes in Living/Dining Room of Flat 3 of Block A in Choi Hing Court

圖例 NOTATION

BATH	浴室	Bathroom
ELECT METER ROOM	電錶房	Electrical Meter Room
HR	消防喉轆	Hose Reel
KIT	廚房	Kitchen
LIV/DIN	客/飯廳	Living/Dining Room
RS & MRR	垃圾及物料回收室	Refuse Storage and Material Recovery Room
WMC	水錶櫃	Water Meter Cupboard
TELECOM ROOM	電訊機房	Telecommunications Room

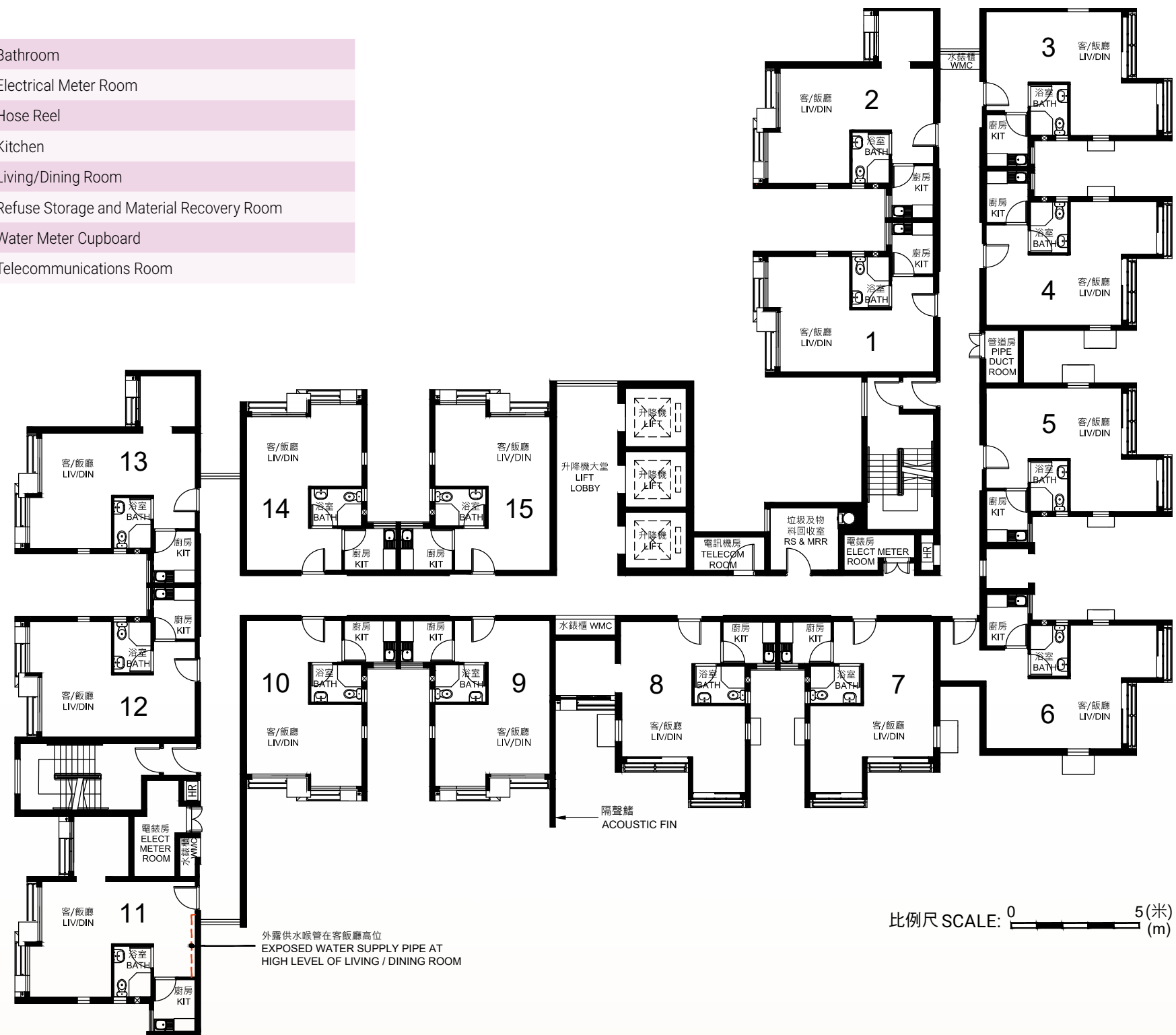


彩興苑B座11號單位客/飯廳內的外露供水喉管參考圖

Reference Plan for Exposed Water Supply Pipes in Living/Dining Room of Flat 11 of Block B in Choi Hing Court

圖例 NOTATION

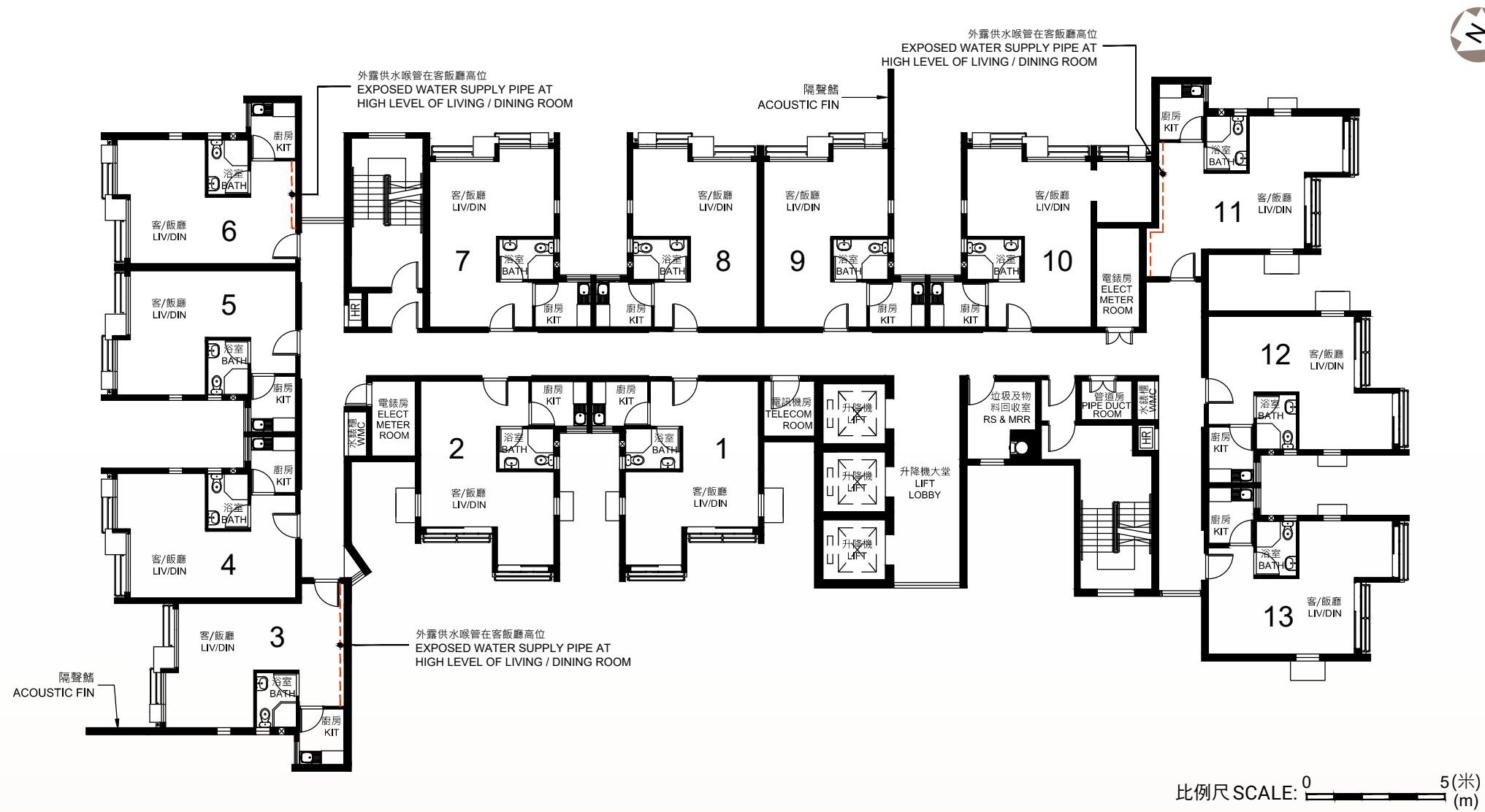
BATH	浴室	Bathroom
ELECT METER ROOM	電錶房	Electrical Meter Room
HR	消防喉轆	Hose Reel
KIT	廚房	Kitchen
LIV/DIN	客/飯廳	Living/Dining Room
RS & MRR	垃圾及物料回收室	Refuse Storage and Material Recovery Room
WMC	水錶櫃	Water Meter Cupboard
TELECOM ROOM	電訊機房	Telecommunications Room



彩興苑C座3、6及11號單位客/飯廳內的外露供水喉管參考圖

Reference Plan for Exposed Water Supply Pipes in Living/Dining Room of Flats 3, 6 & 11 of Block C in Choi Hing Court

BATH	浴室	Bathroom
ELECT METER ROOM	電錶房	Electrical Meter Room
HR	消防喉轆	Hose Reel
KIT	廚房	Kitchen
LIV/DIN	客/飯廳	Living/Dining Room
RS & MRR	垃圾及物料回收室	Refuse Storage and Material Recovery Room
WMC	水錶櫃	Water Meter Cupboard
TELECOM ROOM	電訊機房	Telecommunications Room



網址 WEBSITE

www.housingauthority.gov.hk/hos/2019/ChoiHing

發展項目及其周邊地區日後可能出現改變。

There may be future changes to the Development and the surrounding areas.

印製日期：2019年9月26日

Printing Date: 26 September 2019



