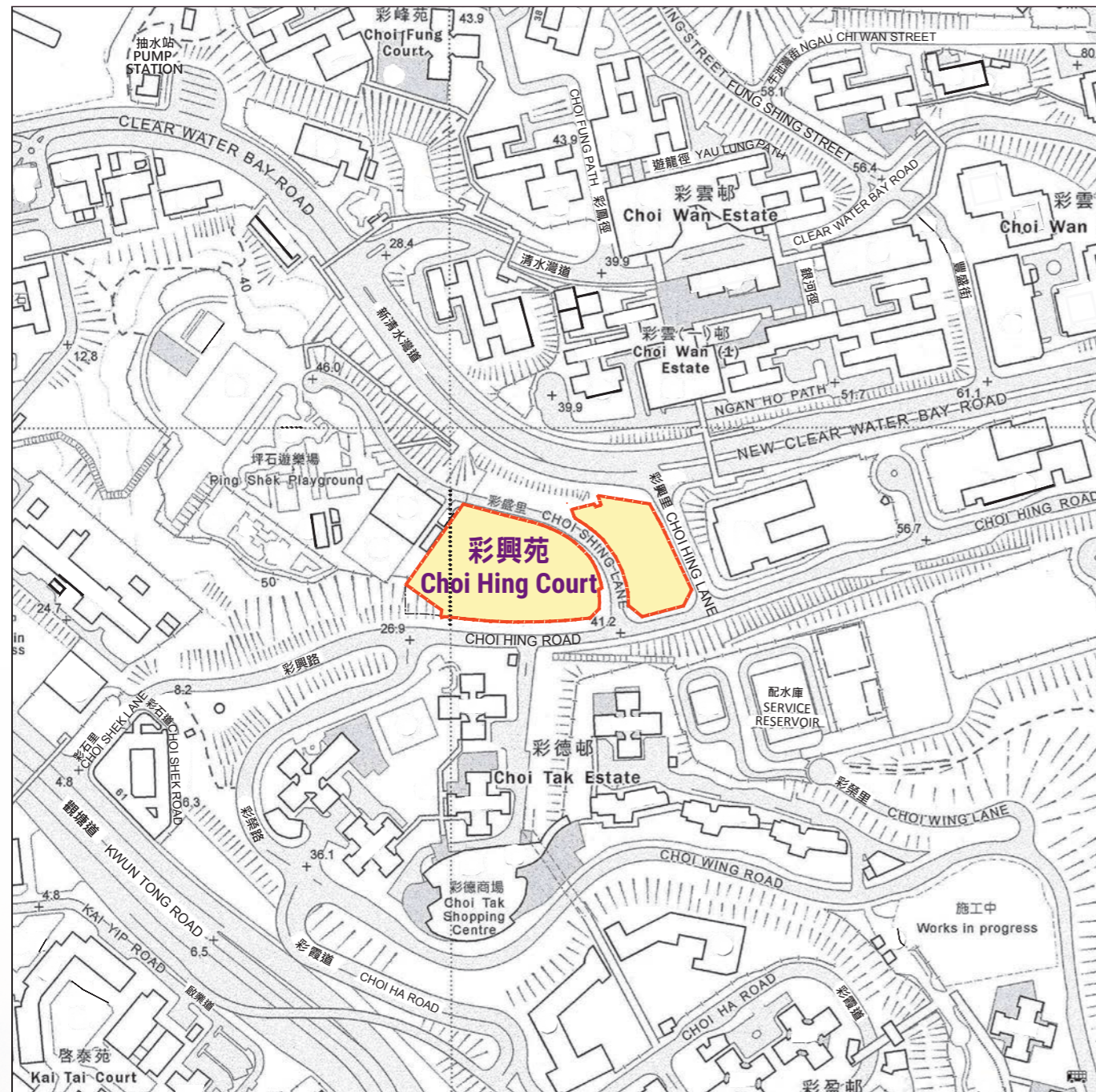


發展項目的位置圖

Location Plan of the Development



比例尺 SCALE: 0 50 100 150 200 250(米)
(m)



此位置圖參考日期為2019年4月9日之測繪圖(編號為11-NE-A)製作,有需要處經修正處理。
地圖版權屬香港特區政府,經地政總署准許複印,版權特許編號114/2016。

The Location Plan is prepared with reference to Survey Sheet No.11-NE-A dated 9 April 2019, with adjustments where necessary.

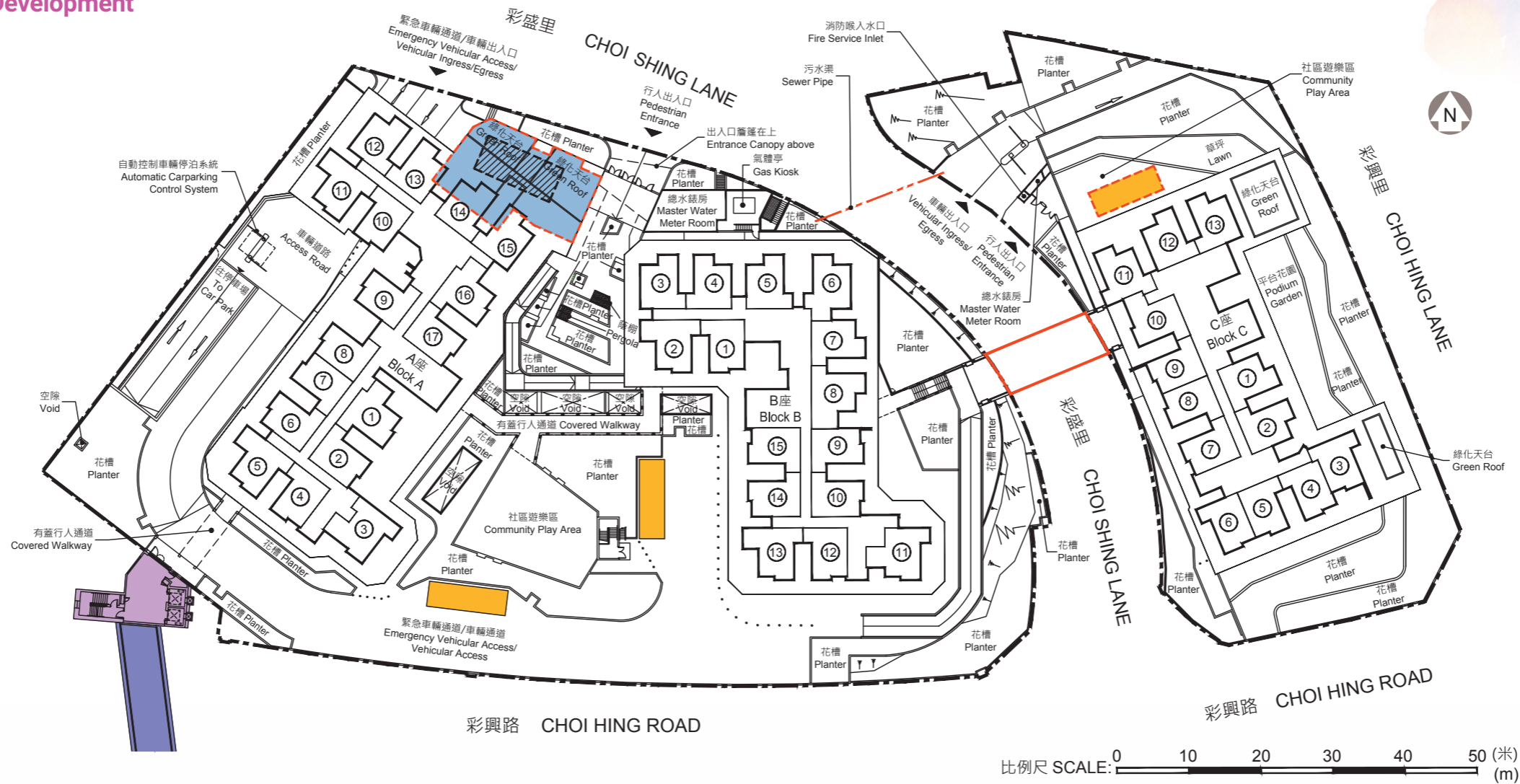
The map reproduced with permission of the Director of Lands. © The Government of the Hong Kong SAR. Licence No. 114/2016.

註: 賣方建議買方到該發展項目作實地考察,以對該發展項目,其周邊地區環境及附近的公共設施有較佳的了解。

Note: The Vendor advises purchasers to conduct on-site visit for a better understanding of the Development, its surrounding environment and the public facilities nearby.

發展項目的布局圖

Layout Plan of the Development

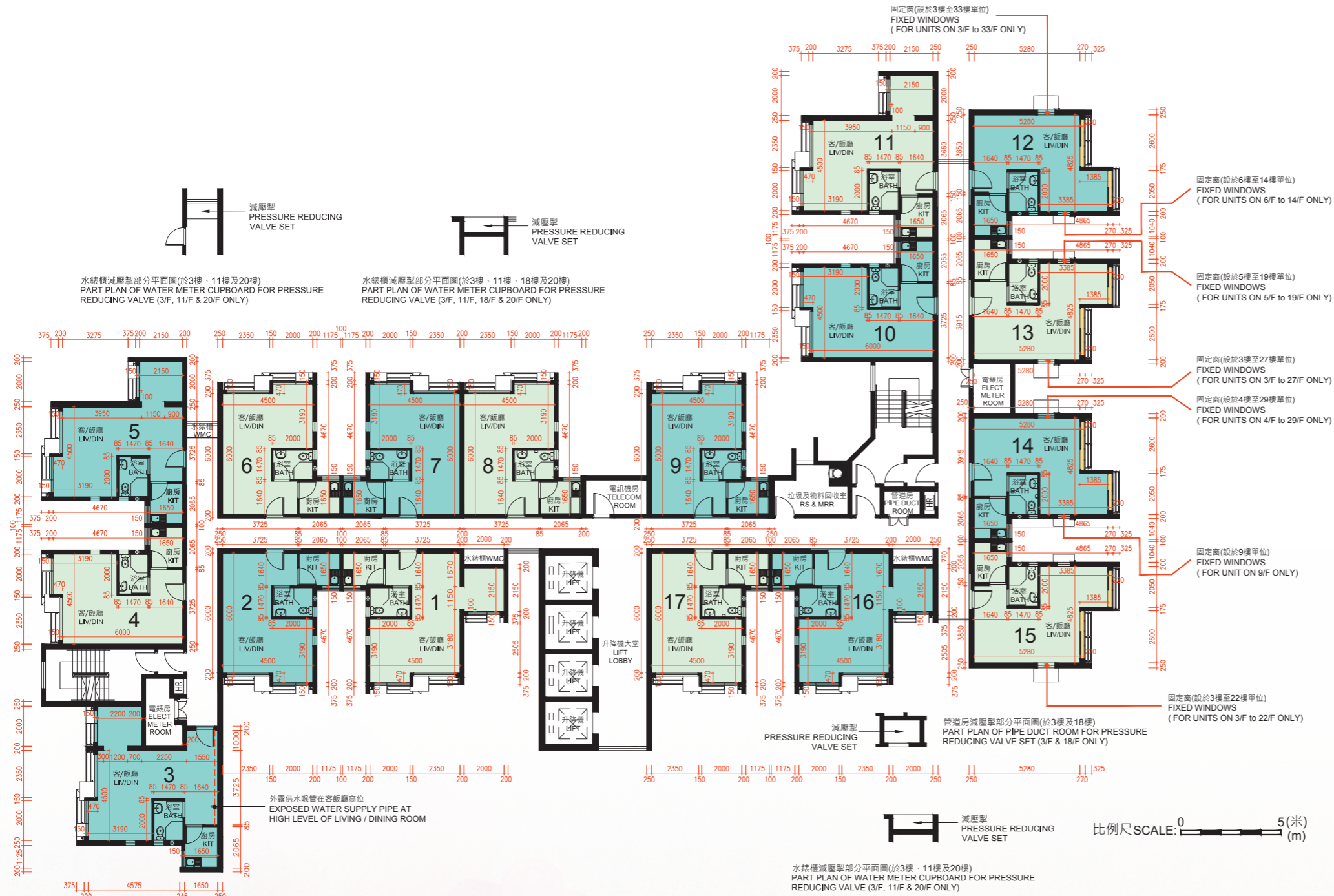


圖例 NOTATION

		停車位類別 Category of Parking Space	數目 Number
---	地界 Lot Boundary		
①	A座2樓-33樓單位室號 Block A Flat Number on 2/F-33/F B座1樓-30樓單位室號 Block B Flat Number on 1/F-30/F C座1樓-27樓單位室號 Block C Flat Number on 1/F-27/F		
	升降機塔及樓梯 Lift Tower and Staircase		
	行人天橋 Footbridge		
	行人天橋 Footbridge		
	地下垃圾收集站、廢物收集站及物料回收站 Refuse Collection Point, Junk Collection Point and Material Recovery Point on Ground Floor		
		露天上落客貨停車位 Open Loading / Unloading Bay	2
		有蓋上落客貨停車位 Covered Loading / Unloading Bay	1
		有蓋垃圾收集車停車位 Covered Refuse Collection Vehicle Parking Space	1
		發展項目另外設有77個有蓋汽車停車位、3個有蓋暢通易達停車位及28個有蓋電車停車位。 There are also 77 numbers of covered Car Parking Space, 3 numbers of covered Accessible Car Parking Space and 28 numbers of covered Motorcycle Parking Space provided in the Development.	

BLOCK A 座 標準樓層平面圖 (3樓至33樓)

Typical Floor Plan (3/F-33/F)



圖例 NOTATION

BATH	浴室	Bathroom
ELECT METER ROOM	電錶房	Electrical Meter Room
HR	消防喉轆	Hose Reel
KIT	廚房	Kitchen
LIV/DIN	客 / 飯廳	Living/Dining Room
RS & MRR	垃圾及物料回收室	Refuse Storage and Material Recovery Room
WMC	水錶櫃	Water Meter Cupboard
TELECOM ROOM	電訊機房	Telecommunications Room
	減音窗	Acoustic Window

註:

1. 平面圖所列之數字為以毫米標示之建築結構尺寸。
2. 每個住宅物業的層與層之間的高度為2.75米(33樓除外)。33樓每個住宅物業的層與層之間的高度為2.79米及2.925米。
3. 每個住宅物業的樓板(不包括灰泥)的厚度為160毫米及215毫米(33樓除外)。33樓每個住宅物業的樓板(不包括灰泥)的厚度為200毫米及335毫米。
4. 大廈設有4部升降機。每個住宅樓層均有2部升降機到達。
5. 為減低道路交通噪音的影響,部分單位將設有減音窗及固定窗。

Notes:

1. The dimensions on the floor plan are all structural dimensions in millimetre.
2. The floor-to-floor height of each residential property is 2.75m (except 33/F). The floor-to-floor heights of each residential property on 33/F are 2.79m and 2.925m.
3. The thicknesses of the floor slabs (excluding plaster) of each residential property are 160mm and 215mm (except 33/F). The thicknesses of the floor slabs (excluding plaster) of each residential property on 33/F are 200mm and 335mm.
4. There are 4 lifts in the building. Each residential floor is served by 2 lifts.
5. In order to mitigate the impact of road traffic noise, acoustic windows and fixed windows are provided for some units.

BLOCK B 座 標準樓層平面圖 (2樓至30樓)

Typical Floor Plan (2/F-30/F)



圖例 NOTATION

BATH	浴室	Bathroom
ELECT METER ROOM	電錶房	Electrical Meter Room
HR	消防喉轆	Hose Reel
KIT	廚房	Kitchen
LIV/DIN	客/飯廳	Living/Dining Room
RS & MRR	垃圾及物料回收室	Refuse Storage and Material Recovery Room
WMC	水錶櫃	Water Meter Cupboard
TELECOM ROOM	電訊機房	Telecommunications Room
	減音窗	Acoustic Window

註:

1. 平面圖所列之數字為以毫米標示之建築結構尺寸。
2. 每個住宅物業的層與層之間的高度為2.75米(30樓除外)。30樓每個住宅物業的層與層之間的高度為2.79米及2.925米。
3. 每個住宅物業的樓板(不包括灰泥)的厚度為160毫米及215毫米(30樓除外)。30樓每個住宅物業的樓板(不包括灰泥)的厚度為200毫米及335毫米。
4. 大廈設有3部升降機。每個住宅樓層均有2部升降機到達。
5. 為減低道路交通噪音的影響,部分單位將設有減音窗及固定窗。

Notes:

1. The dimensions on the floor plan are all structural dimensions in millimetre.
2. The floor-to-floor height of each residential property is 2.75m (except 30/F). The floor-to-floor heights of each residential property on 30/F are 2.79m and 2.925m.
3. The thicknesses of the floor slabs (excluding plaster) of each residential property are 160mm and 215mm (except 30/F). The thicknesses of the floor slabs (excluding plaster) of each residential property on 30/F are 200mm and 335mm.
4. There are 3 lifts in the building. Each residential floor is served by 2 lifts.
5. In order to mitigate the impact of road traffic noise, acoustic windows and fixed windows are provided for some units.

比例尺 SCALE: 0 5(米) (m)

