

# 發展項目的位置圖

## Location Plan of the Development



比例尺 SCALE: 0 50 100 150 200 250 米 (m)



### 圖例 NOTATION



零散山墳所在斜坡  
Slope with scattered graves



輕便鐵路車站 / 西鐵綫車站  
Light Rail Transit Station / West Rail Line Station

此位置圖參考日期均為2019年3月28日之測繪圖(編號分別為6-NW-A及6-NW-B)製作,有需要處經修正處理。  
地圖版權屬香港特區政府,經地政總署准許複印,版權特許編號29/2016。

The Location Plan is prepared with reference to Survey Sheet No. 6-NW-A and 6-NW-B both dated 28 March 2019, with adjustments where necessary.

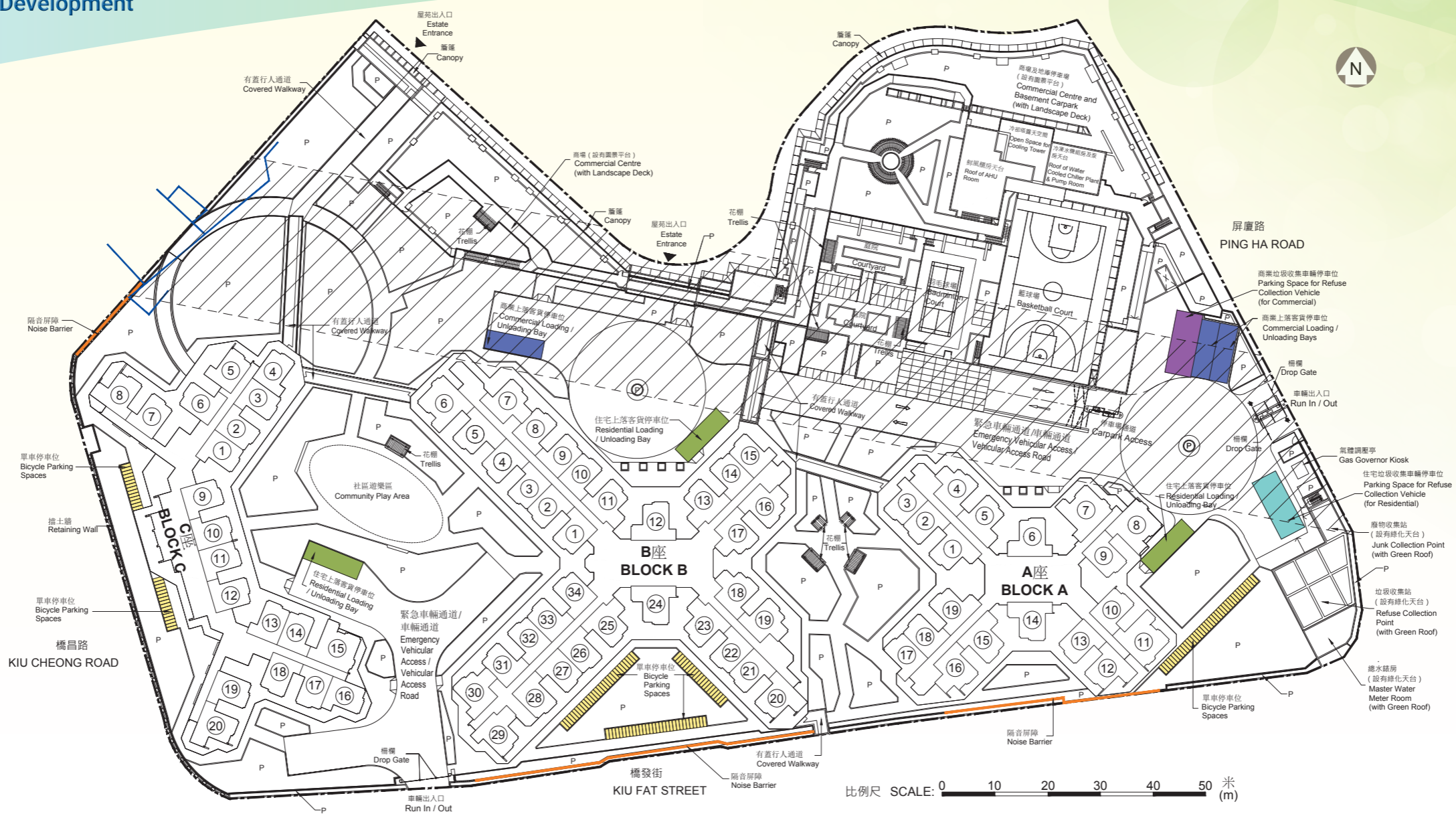
The map reproduced with permission of the Director of Lands. © The Government of the Hong Kong SAR. Licence No. 29/2016.

註: 賣方建議買方到該發展項目作實地考察,以對該發展項目,其周邊地區環境及附近的公共設施有較佳的了解。

Note: The Vendor advises purchasers to conduct on-site visit for a better understanding of the Development, its surrounding environment and the public facilities nearby.

# 發展項目的布局圖

## Layout Plan of the Development



圖例 NOTATION

停車位類別 Category of Parking Space		數目 Number	停車位類別 Category of Parking Space		數目 Number
	地界 Lot Boundary			住宅上落客貨停車位 Residential Loading / Unloading Bays	3
	隔音屏障 Noise Barrier			商業上落客貨停車位 Commercial Loading / Unloading Bays	3
	1樓-33樓 單位室號 Flat Number on 1/F-33/F			單車停車位 (露天) (註1) Bicycle Parking Spaces (Open) (Note 1)	149
	現有食水管 Existing Fresh Water Mains			住宅垃圾收集車停車位 Residential Loading / Unloading Bay for Refuse Collection Vehicle	1
	花槽 Planter			商業垃圾收集車停車位 Commercial Loading / Unloading Bay for Refuse Collection Vehicle	1
	觀景廊 (註2) View Corridor (Note 2)		註 Notes:		
			1. 發展項目另外設有132個有蓋汽車停車位、22個有蓋單車停車位及173個有蓋單車停車位。 There are also 132 numbers of covered Car Parking Spaces, 22 numbers of covered Motorcycle Parking Spaces and 173 numbers of covered Bicycle Parking Spaces provided in the Development.		
			2. 位於圖中所示地段內「觀景廊」位置上建築物的任何部分的總高度不可超過香港主水平基準以上18.5米或以地政總署署長自行酌情批准的其他高度限制。 No part of any building or other structure erected or to be erected on and within that portion of the Lot shown "View Corridor" on the plan shall in the aggregate exceed a height of 18.5 metres above the Hong Kong Principal Datum or such other height limits as the Director of Lands may at his sole discretion approve.		

# BLOCK A 座 標準樓層平面圖(2樓至33樓)

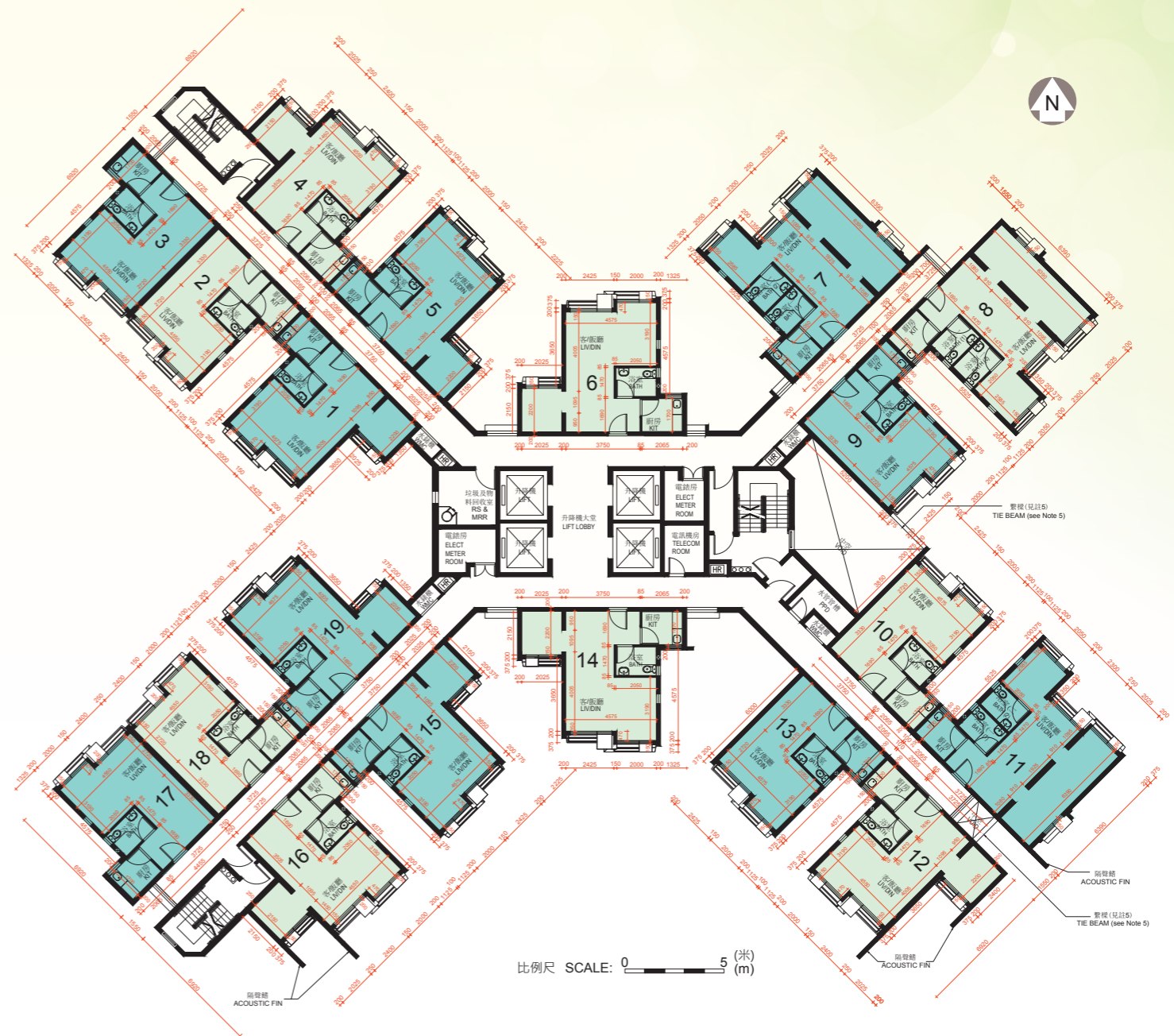
## Typical Floor Plan (2/F-33/F)

### 圖例 NOTATION

BATH	浴室	Bathroom
ELECT METER ROOM	電錶房	Electrical Meter Room
HR	消防喉轆	Hose Reel
KIT	廚房	Kitchen
LIV/DIN	客/飯廳	Living/Dining Room
PPD	水管管槽	Plumbing Pipe Duct
RS & MRR	垃圾及物料回收室	Refuse Storage and Material Recovery Room
WMC	水錶櫃	Water Meter Cupboard

- 註：
1. 平面圖所列之數字為以毫米標示之建築結構尺寸。
  2. 每個住宅物業的層與層之間的高度為2.75米(33樓除外)。  
33樓每個住宅物業的層與層之間的高度為2.79米。
  3. 2樓至32樓每個住宅物業(7、8及11號單位除外)的樓板(不包括灰泥)的厚度為160毫米及250毫米。  
2樓至32樓7、8及11號單位的樓板(不包括灰泥)的厚度為160毫米及215毫米。  
33樓每個住宅物業(7、8及11號單位除外)的樓板(不包括灰泥)的厚度為200毫米、290毫米及375毫米。  
33樓7、8及11號單位的樓板(不包括灰泥)的厚度為200毫米及375毫米。
  4. 大廈設有4部升降機。  
每個住宅樓層均有2部升降機到達。
  5. 繫樑只設於5、8、11、14、17、20、23、26、29及32樓。

- Notes:
1. The dimensions on the floor plan are all structural dimensions in millimetre.
  2. The floor-to-floor height of each residential property is 2.75m (except 33/F).  
The floor-to-floor height of each residential property on 33/F is 2.79m.
  3. The thicknesses of the floor slabs (excluding plaster) of each residential property (except Flats 7, 8 and 11) on 2/F-32/F are 160mm and 250mm.  
The thicknesses of the floor slabs (excluding plaster) of Flats 7, 8 and 11 on 2/F-32/F are 160mm and 215mm.  
The thicknesses of the floor slabs (excluding plaster) of each residential property (except Flats 7, 8 and 11) on 33/F are 200mm, 290mm and 375mm.  
The thicknesses of the floor slabs (excluding plaster) of Flats 7, 8 and 11 on 33/F are 200mm and 375mm.
  4. There are 4 numbers of lifts in the building.  
Each residential floor is served by 2 numbers of lifts.
  5. Tie Beams at 5/F, 8/F, 11/F, 14/F, 17/F, 20/F, 23/F, 26/F, 29/F & 32/F only.



# BLOCK B 座 標準樓層平面圖 (2樓至33樓)

## Typical Floor Plan (2/F-33/F)

### 圖例 NOTATION

BATH	浴室	Bathroom
ELECT METER ROOM	電錶房	Electrical Meter Room
HR	消防喉轆	Hose Reel
KIT	廚房	Kitchen
LIV/DIN	客/飯廳	Living/Dining Room
PPD	水管管槽	Plumbing Pipe Duct
RS & MRR	垃圾及物料回收室	Refuse Storage and Material Recovery Room
WMC	水錶櫃	Water Meter Cupboard



- 註：
1. 平面圖所列之數字為以毫米標示之建築結構尺寸。
  2. 每個住宅物業的層與層之間的高度為2.75米(33樓除外)。  
33樓每個住宅物業的層與層之間的高度為2.79米。
  3. 2樓至32樓每個住宅物業(6號單位除外)的樓板(不包括灰泥)的厚度為160毫米及250毫米。  
2樓至32樓6號單位的樓板(不包括灰泥)的厚度為160毫米及215毫米。  
33樓每個住宅物業(6號單位除外)的樓板(不包括灰泥)的厚度為200毫米、290毫米及375毫米。  
33樓6號單位的樓板(不包括灰泥)的厚度為200毫米及375毫米。
  4. 大廈設有8部升降機。  
每個住宅樓層均有4部升降機到達。
  5. 繫樑只設於5、8、11、14、17、20、23、26、29及32樓。

- Notes:
1. The dimensions on the floor plan are all structural dimensions in millimetre.
  2. The floor-to-floor height of each residential property is 2.75m (except 33/F).  
The floor-to-floor height of each residential property on 33/F is 2.79m.
  3. The thicknesses of the floor slabs (excluding plaster) of each residential property (except Flat 6) on 2/F-32/F are 160mm and 250mm.  
The thicknesses of the floor slabs (excluding plaster) of Flat 6 on 2/F-32/F are 160mm and 215mm.  
The thicknesses of the floor slabs (excluding plaster) of each residential property (except Flat 6) on 33/F are 200mm, 290mm and 375mm.  
The thicknesses of the floor slabs (excluding plaster) of Flat 6 on 33/F are 200mm and 375mm.
  4. There are 8 numbers of lifts in the building.  
Each residential floor is served by 4 numbers of lifts.
  5. Tie Beams at 5/F, 8/F, 11/F, 14/F, 17/F, 20/F, 23/F, 26/F, 29/F & 32/F only.

# BLOCK C 座 標準樓層平面圖(2樓至33樓)

## Typical Floor Plan (2/F-33/F)



### 圖例 NOTATION

BATH	浴室	Bathroom
ELECT METER ROOM	電錶房	Electrical Meter Room
HR	消防喉轆	Hose Reel
KIT	廚房	Kitchen
LIV/DIN	客/飯廳	Living/Dining Room
PD	污水管管槽	Drainage Pipe Duct
RS & MRR	垃圾及物料回收室	Refuse Storage and Material Recovery Room
WMC	水錶櫃	Water Meter Cupboard

註：

1. 平面圖所列之數字為以毫米標示之建築結構尺寸。
2. 每個住宅物業的層與層之間的高度為2.75米(33樓除外)。33樓每個住宅物業的層與層之間的高度為2.79米。
3. 2樓至32樓每個住宅物業(15號單位除外)的樓板(不包括灰泥)的厚度為160毫米及250毫米。  
2樓至32樓15號單位每個住宅物業的樓板(不包括灰泥)的厚度為160毫米及215毫米。  
33樓每個住宅物業(15號單位除外)的樓板(不包括灰泥)的厚度為200毫米、290毫米及375毫米。  
33樓15號單位的樓板(不包括灰泥)的厚度為200毫米及375毫米
4. 大廈設有4部升降機。  
每個住宅樓層均有2部升降機到達。
5. 繫樑只設於5、8、11、14、17、20、23、26、29及32樓。
6. 4、5及16號單位有外露食水喉管經過該單位的客/飯廳。

Notes:

1. The dimensions on the floor plan are all structural dimensions in millimetre.
2. The floor-to-floor height of each residential property is 2.75m (except 33/F). The floor-to-floor height of each residential property on 33/F is 2.79m.
3. The thicknesses of the floor slabs (excluding plaster) of each residential property (except Flat 15) on 2/F-32/F are 160mm and 250mm. The thicknesses of the floor slabs (excluding plaster) of each residential property of Flat 15 on 2/F-32/F are 160mm and 215mm. The thicknesses of the floor slabs (excluding plaster) of each residential property (except Flat 15) on 33/F are 200mm, 290mm and 375mm. The thicknesses of the floor slabs (excluding plaster) of Flat 15 on 33/F are 200mm and 375mm.
4. There are 4 numbers of lifts in the building. Each residential floor is served by 2 numbers of lifts.
5. Tie Beams at 5/F, 8/F, 11/F, 14/F, 17/F, 20/F, 23/F, 26/F, 29/F & 32/F only.
6. There are exposed fresh water pipes passing through Living/Dining Rooms of Flats 4, 5 & 16.