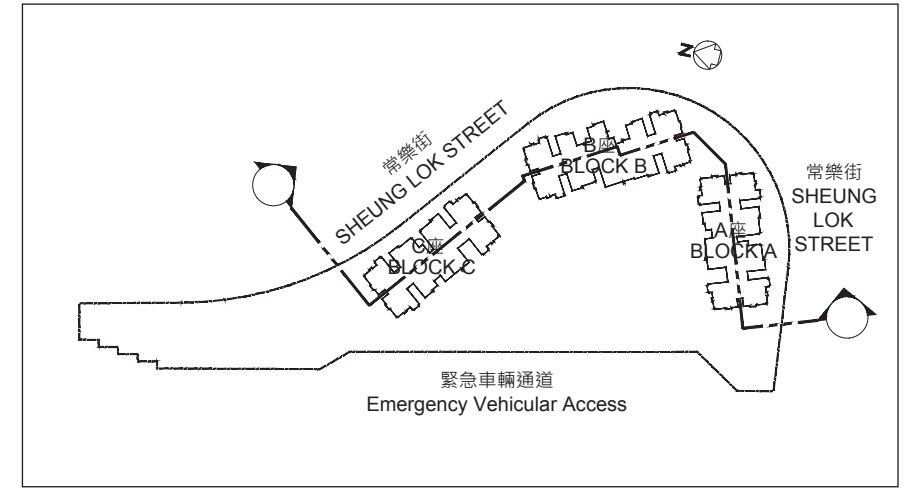


C座
Block C

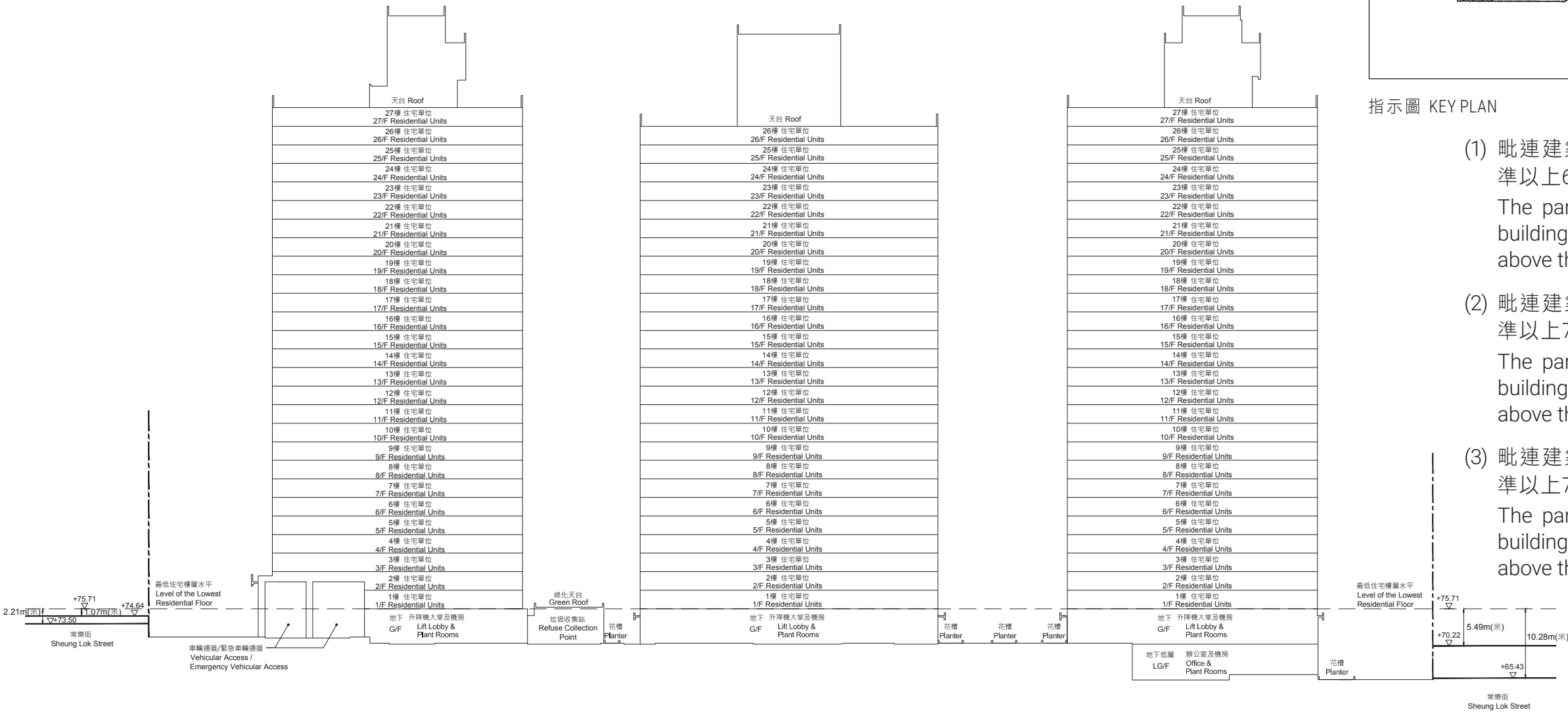
B座
Block B

A座
Block A



指示圖 KEY PLAN

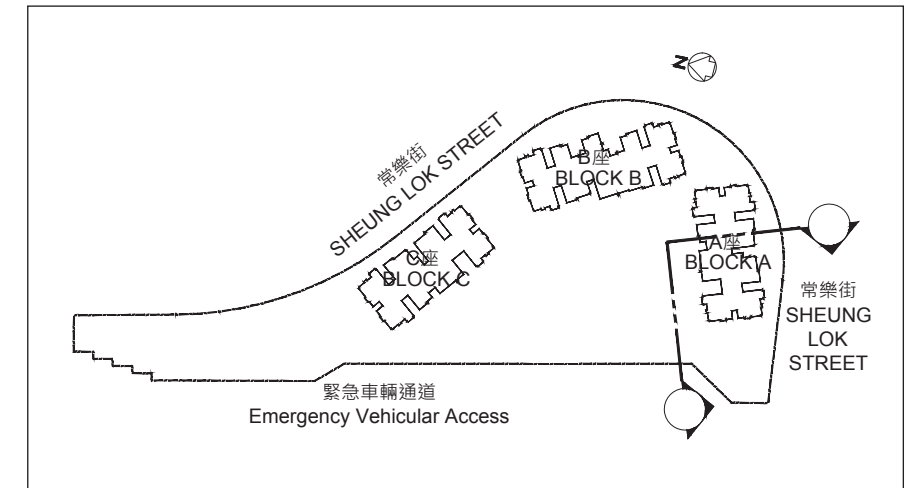
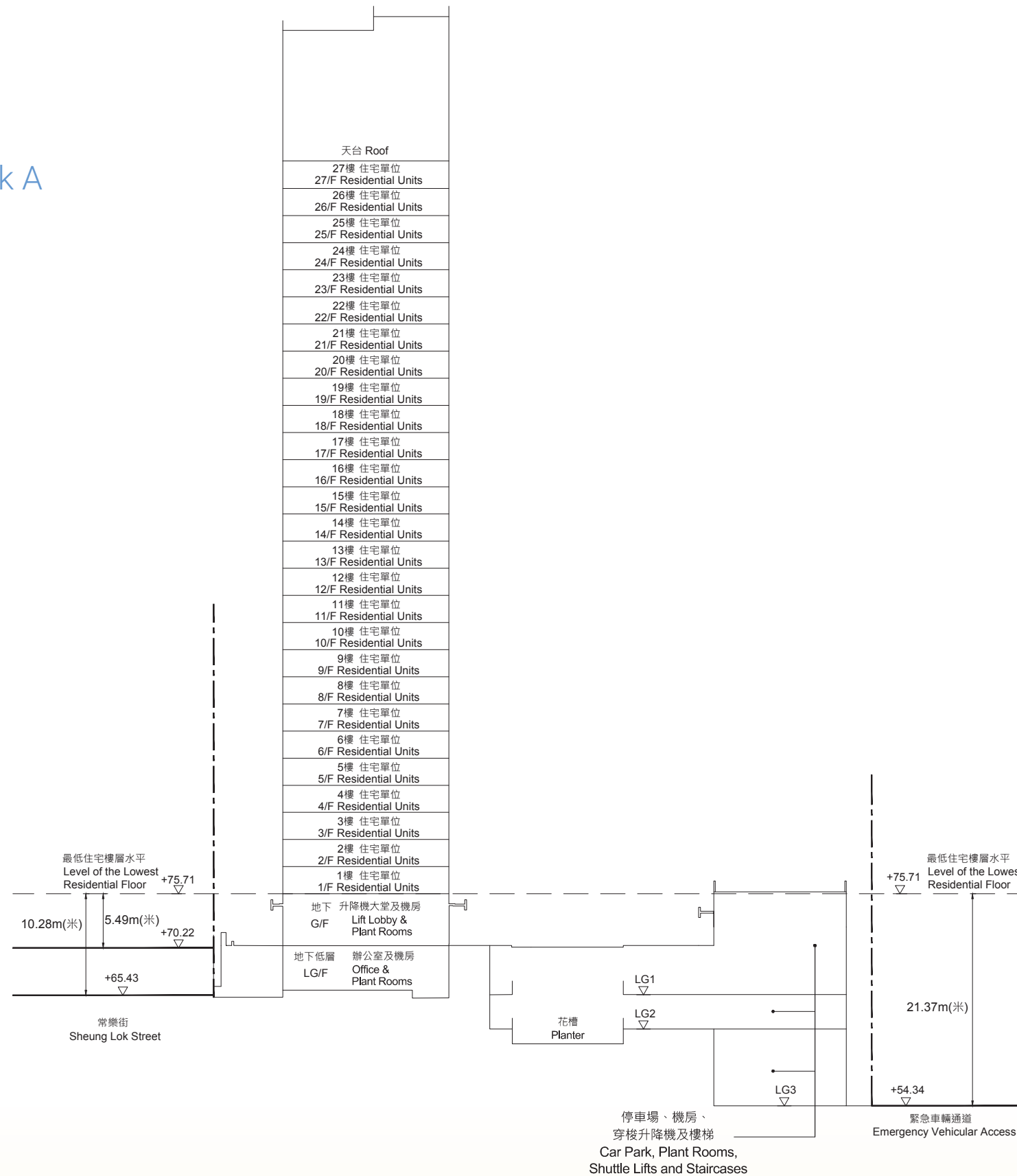
- 毗連建築物(A座)的一段常樂街為香港主水平基準以上65.43米至70.22米。
The part of Sheung Lok Street adjacent to the building (Block A) is 65.43 metres to 70.22 metres above the Hong Kong Principal Datum.
- 毗連建築物(B座)的一段常樂街為香港主水平基準以上70.22米至73.50米。
The part of Sheung Lok Street adjacent to the building (Block B) is 70.22 metres to 73.50 metres above the Hong Kong Principal Datum.
- 毗連建築物(C座)的一段常樂街為香港主水平基準以上73.50米至74.64米。
The part of Sheung Lok Street adjacent to the building (Block C) is 73.50 metres to 74.64 metres above the Hong Kong Principal Datum.



圖例 NOTATION

-----	發展項目的邊界	Boundary of the Development
▽	香港主水平基準上高度(米)	Height (in metres) above the Hong Kong Principal Datum

A 座
Block A



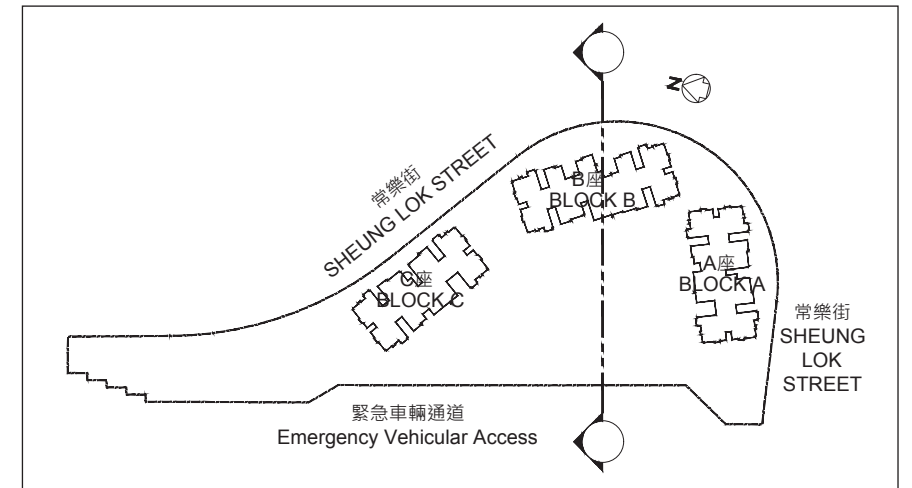
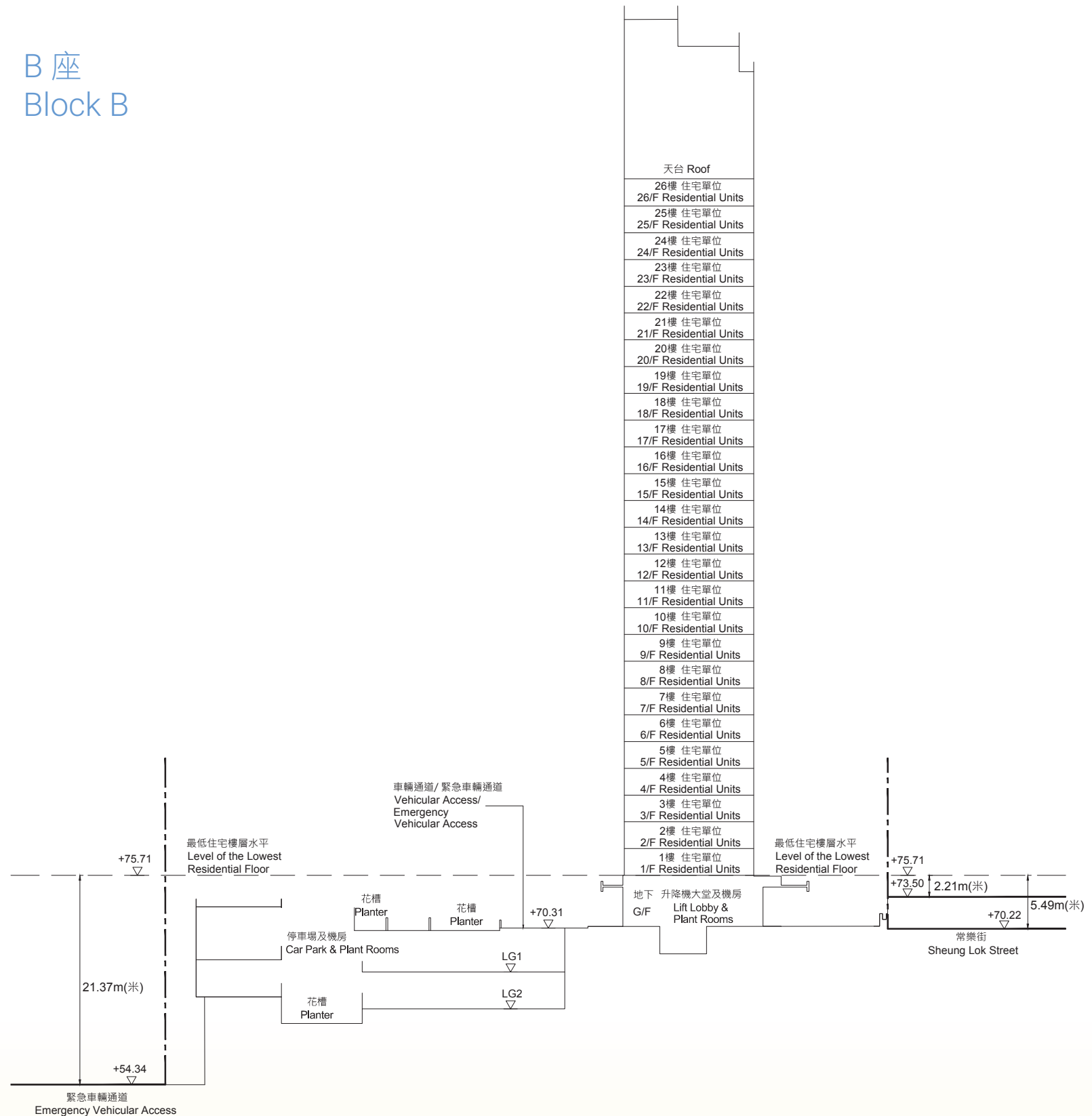
指示圖 KEY PLAN

- (1) 毗連建築物(A座)的一段緊急車輛通道為香港主水平基準以上54.34米。
The part of Emergency Vehicular Access adjacent to the building (Block A) is 54.34 metres above the Hong Kong Principal Datum.
- (2) 毗連建築物(A座)的一段常樂街為香港主水平基準以上65.43米至70.22米。
The part of Sheung Lok Street adjacent to the building (Block A) is 65.43 metres to 70.22 metres above the Hong Kong Principal Datum.

圖例 NOTATION

-----	發展項目的邊界	Boundary of the Development
▽	香港主水平基準上高度(米)	Height (in metres) above the Hong Kong Principal Datum

B 座
Block B



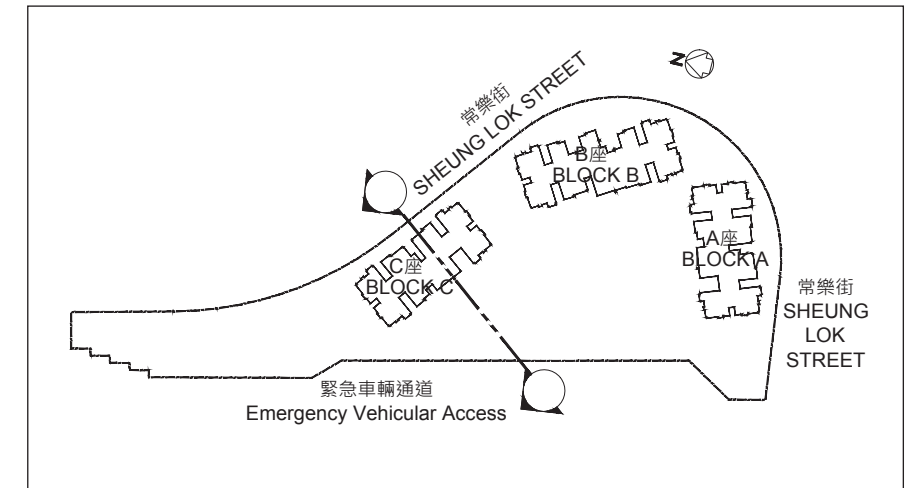
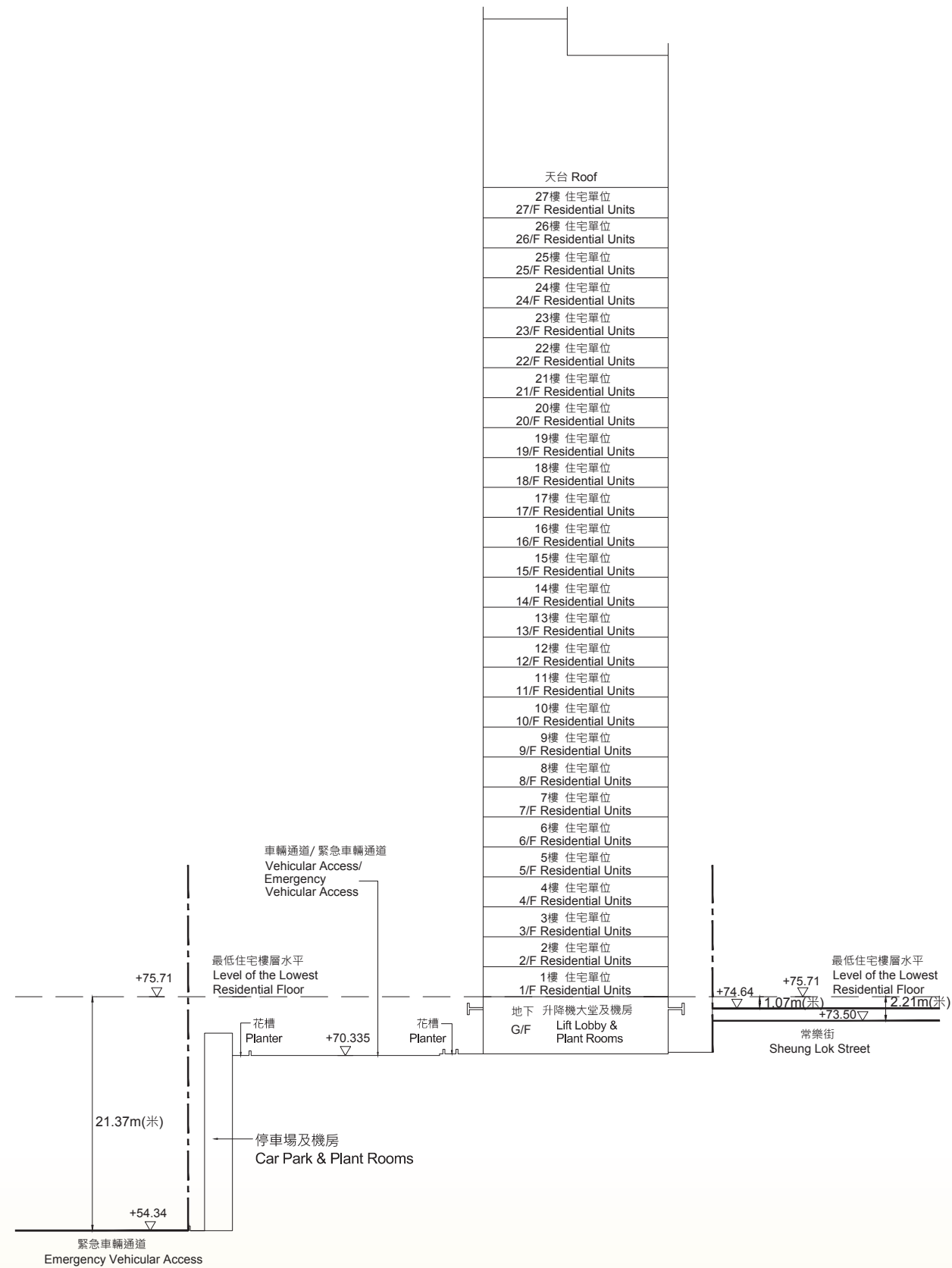
指示圖 KEY PLAN

- (1) 毗連建築物(B座)的一段車輛通道/緊急車輛通道為香港主水平基準以上70.31米。
The part of Vehicular Access/Emergency Vehicular Access adjacent to the building (Block B) is 70.31 metres above the Hong Kong Principal Datum.
- (2) 毗連建築物(B座)的一段緊急車輛通道為香港主水平基準以上 54.34米。
The part of Emergency Vehicular Access adjacent to the building (Block B) is 54.34 metres above the Hong Kong Principal Datum.
- (3) 毗連建築物(B座)的一段常樂街為香港主水平基準以上70.22米至73.50米。
The part of Sheung Lok Street adjacent to the building (Block B) is 70.22 metres to 73.50 metres above the Hong Kong Principal Datum.

圖例 NOTATION

-----	發展項目的邊界	Boundary of the Development
▽	香港主水平基準上高度(米)	Height (in metres) above the Hong Kong Principal Datum

C 座
Block C



指示圖 KEY PLAN

- (1) 毗連建築物(C座)的一段緊急車輛通道為香港主水平基準以上54.34米。
The part of Emergency Vehicular Access adjacent to the building (Block C) is 54.34 metres above the Hong Kong Principal Datum.
- (2) 毗連建築物(C座)的一段常樂街為香港主水平基準以上73.50米至74.64米。
The part of Sheung Lok Street adjacent to the building (Block C) is 73.50 metres to 74.64 metres above the Hong Kong Principal Datum.

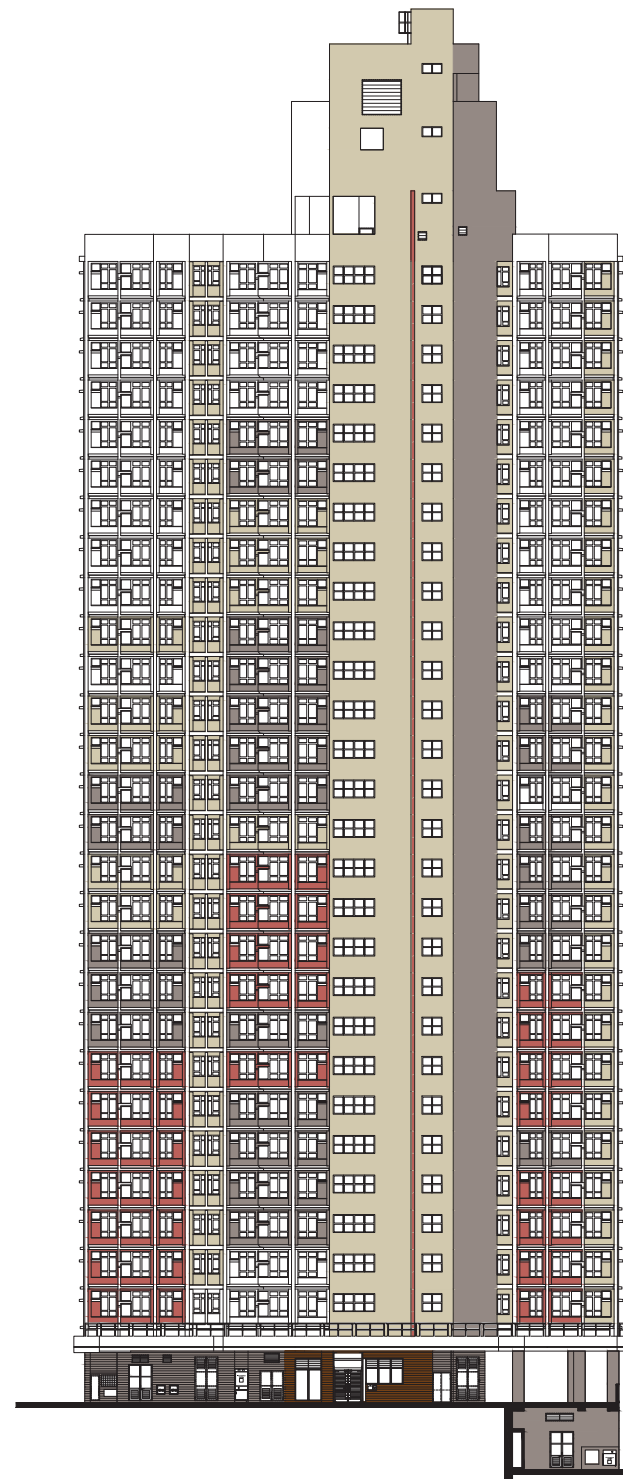
圖例 NOTATION

-----	發展項目的邊界	Boundary of the Development
▽	香港主水平基準上高度(米)	Height (in metres) above the Hong Kong Principal Datum

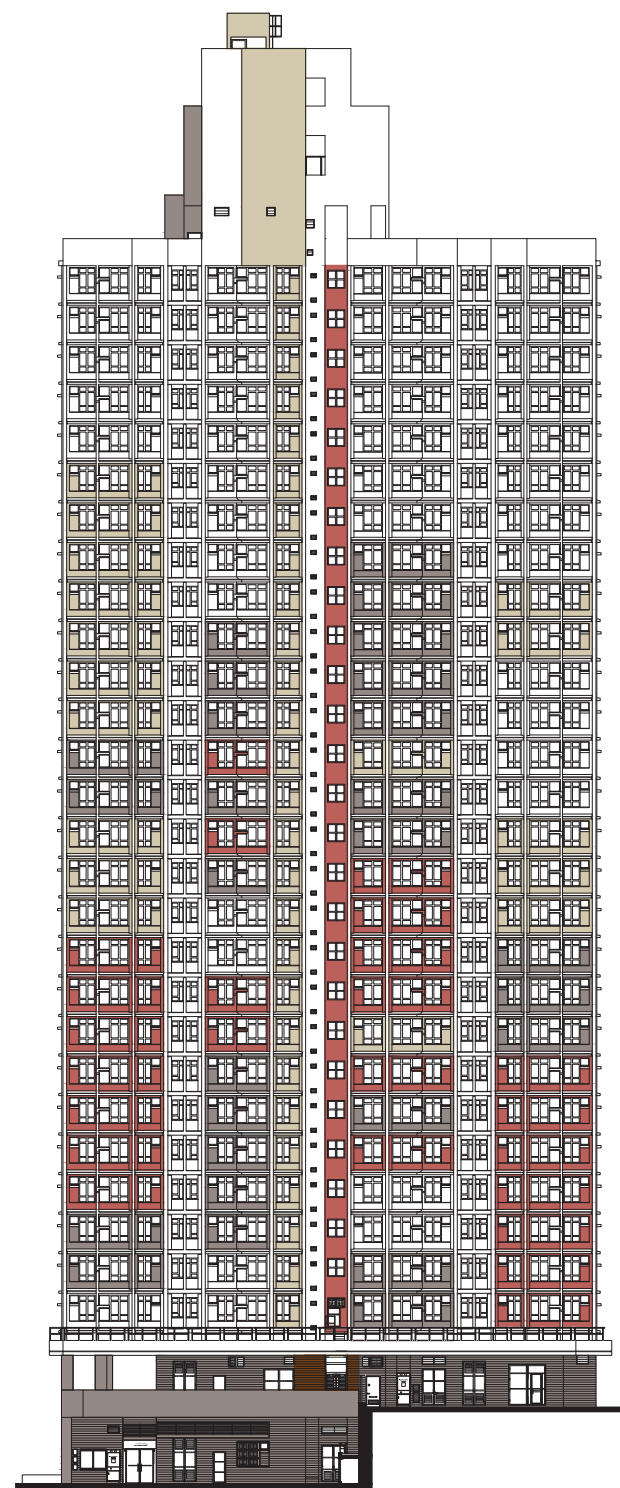
20 立面圖

Elevation Plan

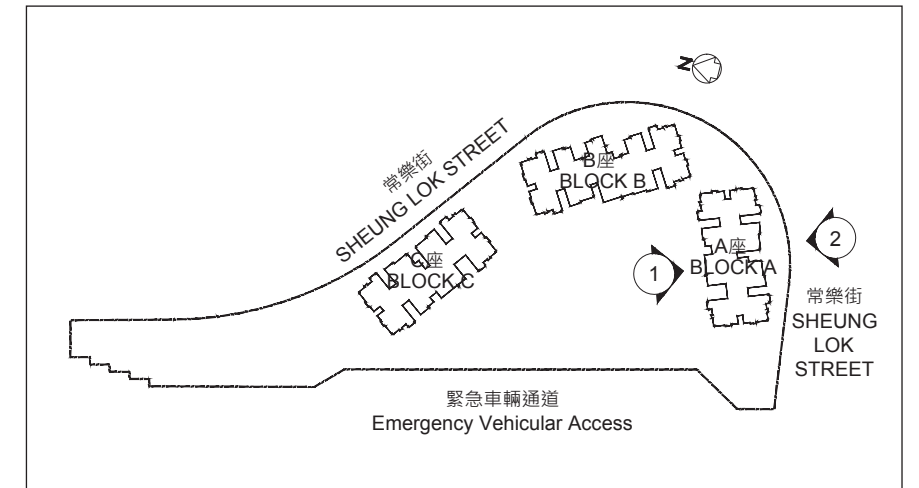
A 座
Block A



西北面立面圖“1”
North West Elevation Plan "1"



東南面立面圖“2”
South East Elevation Plan "2"



指示圖 KEY PLAN

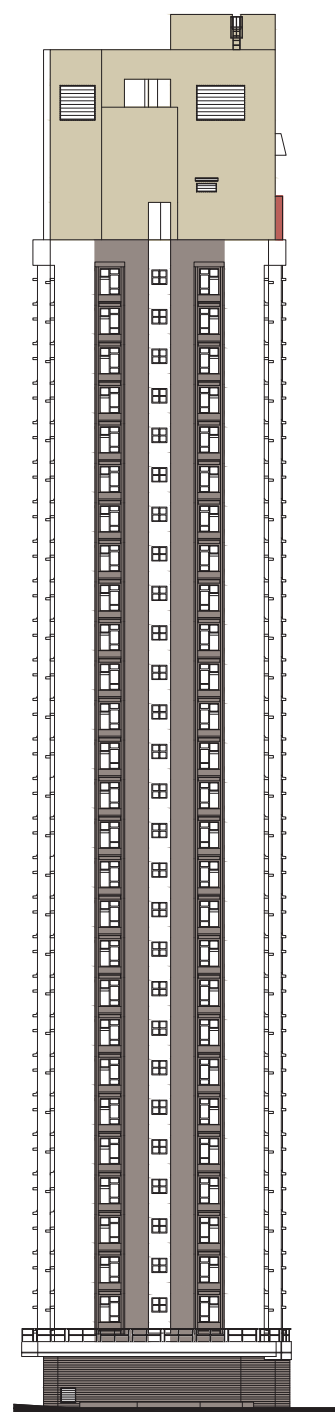
本圖所顯示的立面：

- (1) 以2019年2月15日的該項目的經批准的建築圖則為基礎擬備；及
- (2) 大致上與該項目的外觀一致。

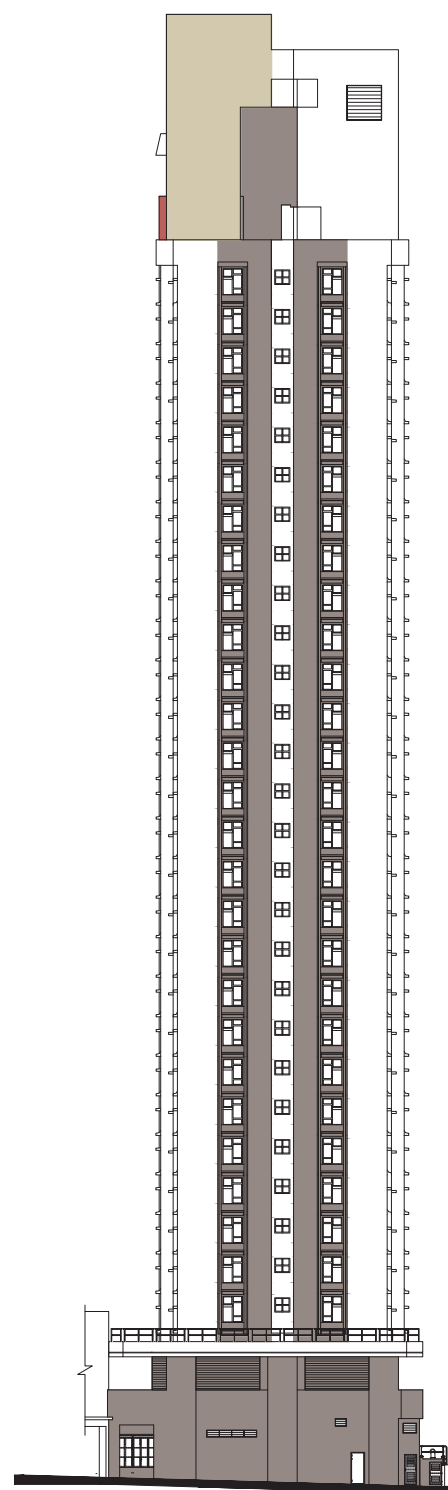
The elevations shown on this plan:

- (1) are prepared on the basis of the approved general building plans for the Development as of 15 February 2019; and
- (2) are in general accordance with the outward appearance of the Development.

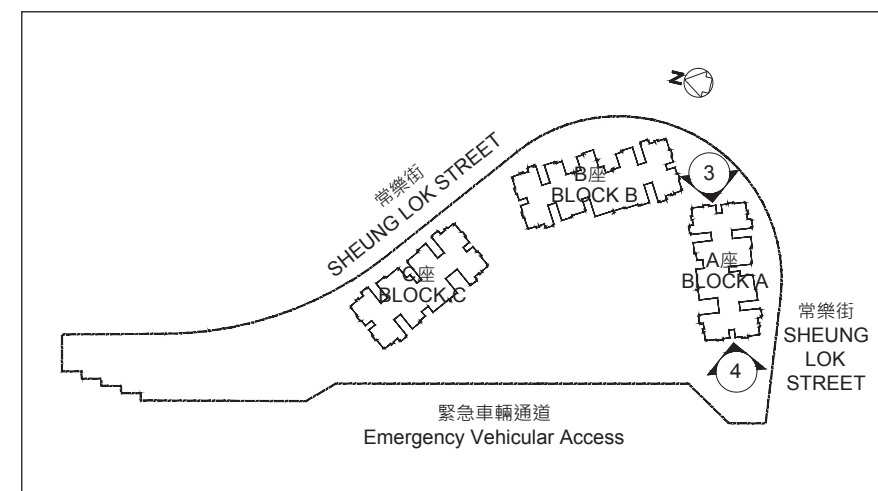
A座
Block A



東北面立面圖“3”
North East Elevation Plan "3"



西南面立面圖“4”
South West Elevation Plan "4"



指示圖 KEY PLAN

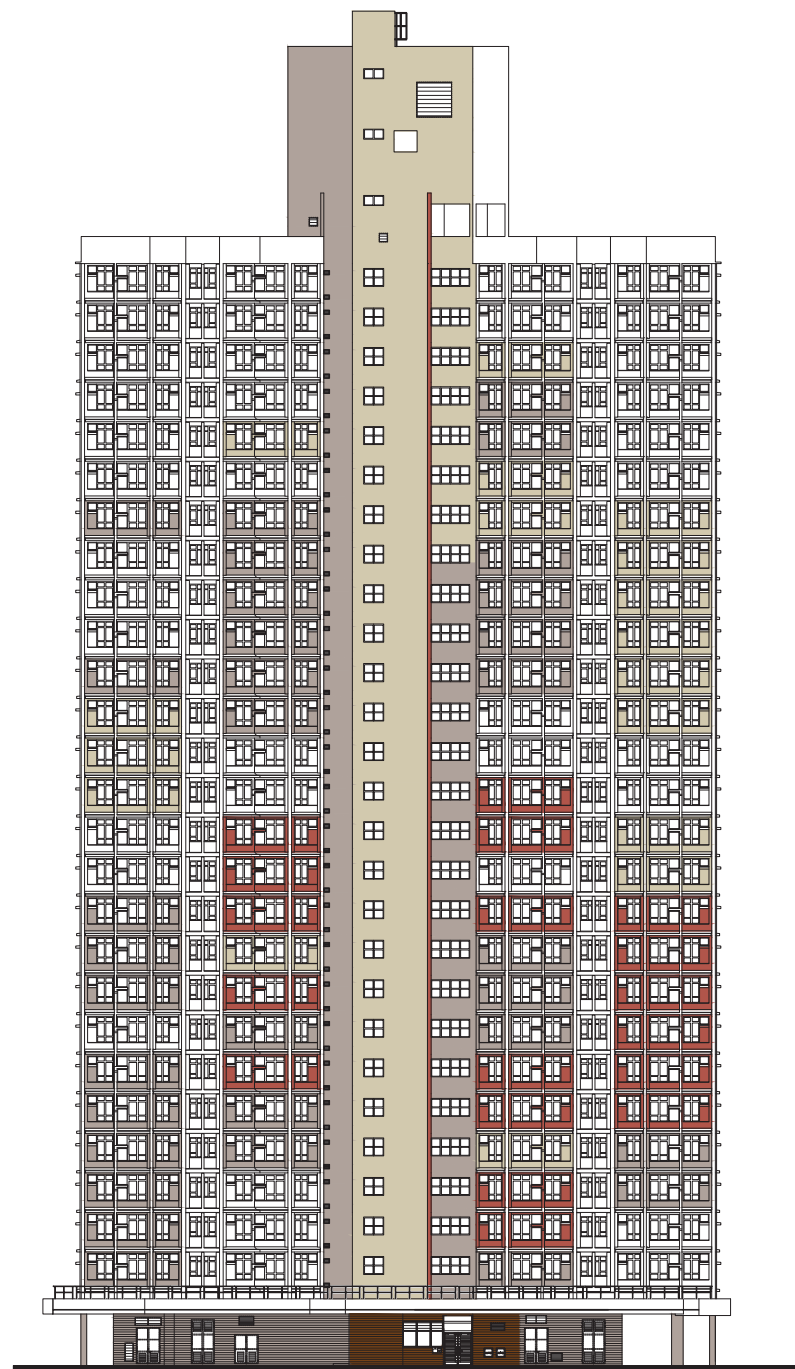
本圖所顯示的立面：

- (1) 以2019年2月15日的該項目的經批准的建築圖則為基礎擬備；及
- (2) 大致上與該項目的外觀一致。

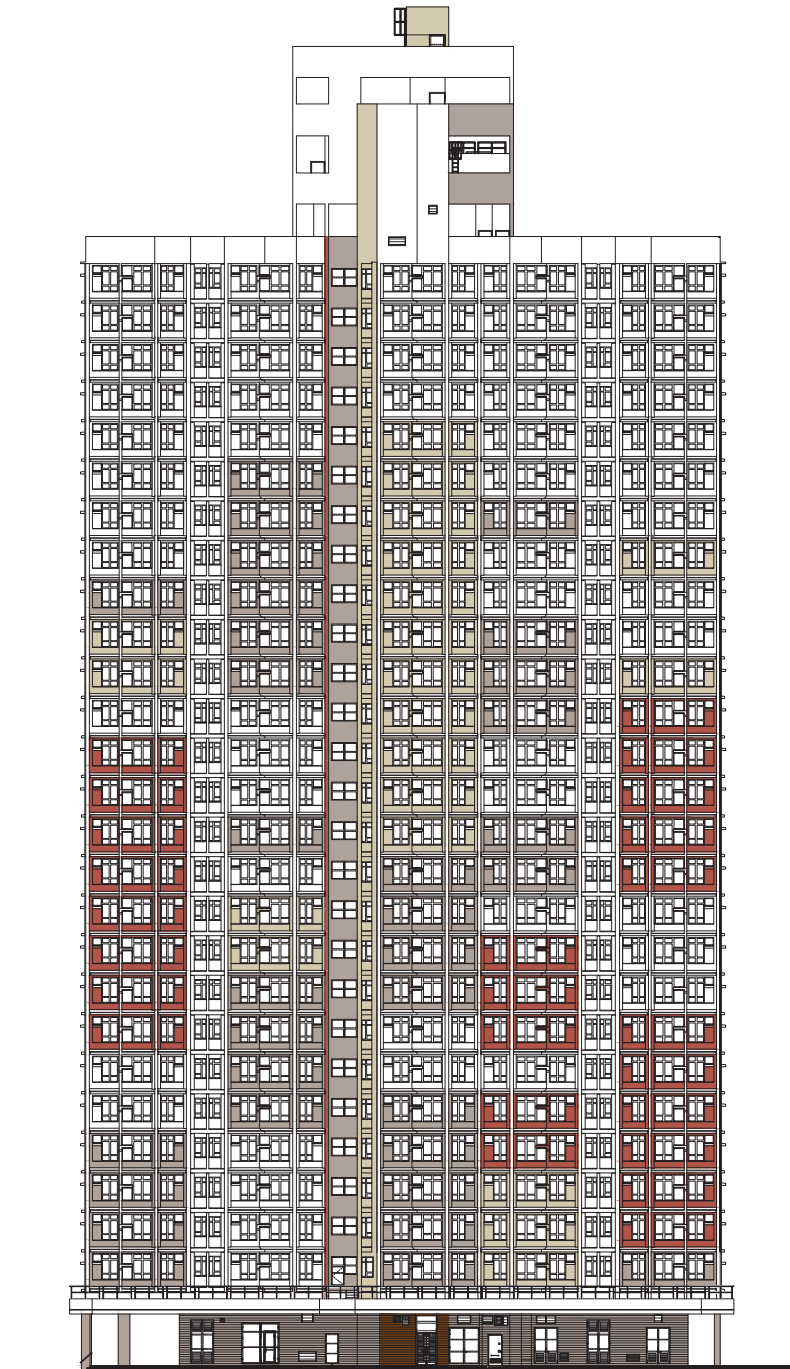
The elevations shown on this plan:

- (1) are prepared on the basis of the approved general building plans for the Development as of 15 February 2019; and
- (2) are in general accordance with the outward appearance of the Development.

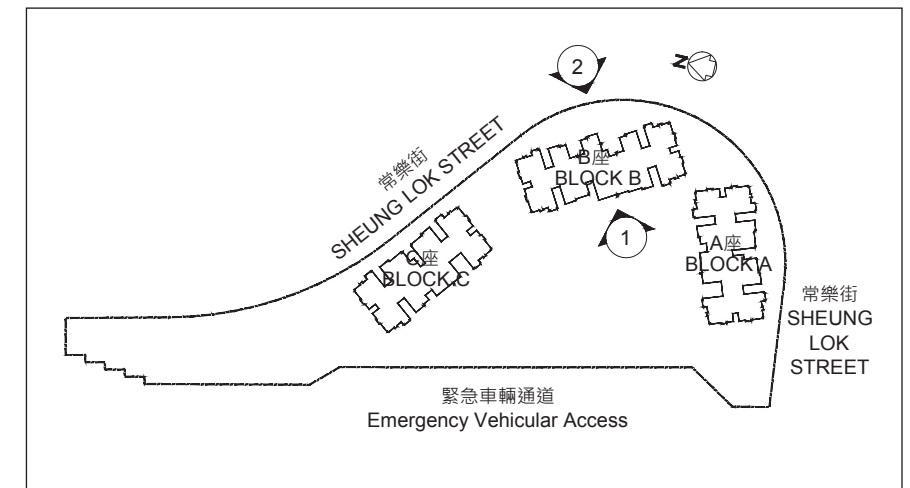
B 座
Block B



西南面立面圖“1”
South West Elevation Plan "1"



東北面立面圖“2”
North East Elevation Plan "2"



指示圖 KEY PLAN

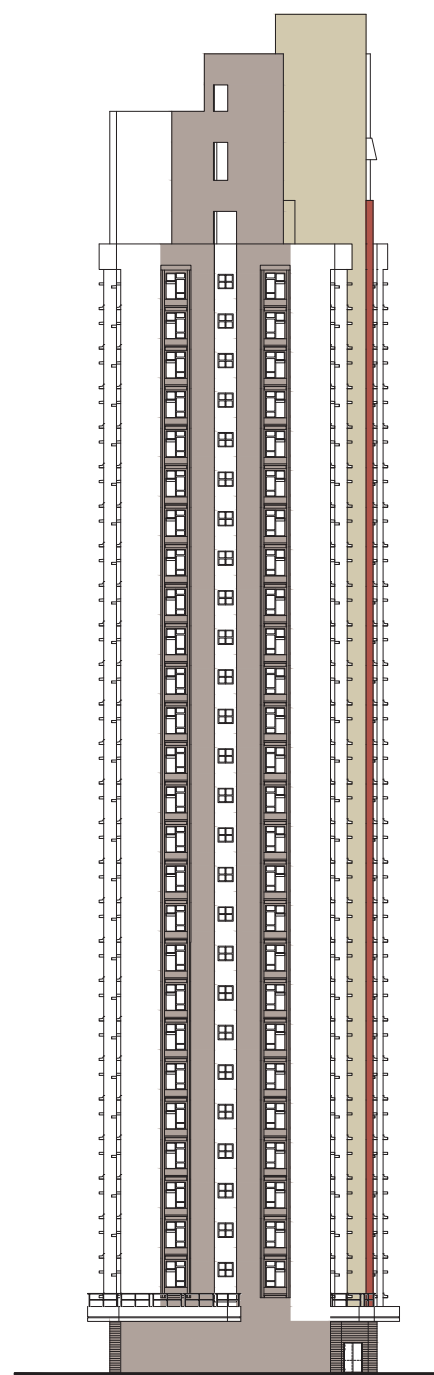
本圖所顯示的立面：

- (1) 以2019年8月28日的該項目的經批准的建築圖則為基礎擬備；及
- (2) 大致上與該項目的外觀一致。

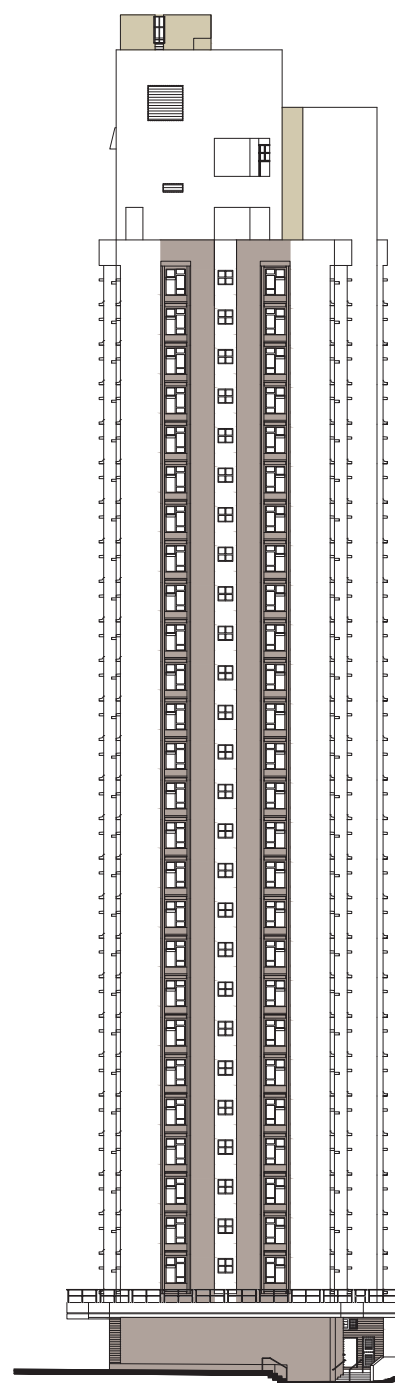
The elevations shown on this plan:

- (1) are prepared on the basis of the approved general building plans for the Development as of 28 August 2019; and
- (2) are in general accordance with the outward appearance of the Development.

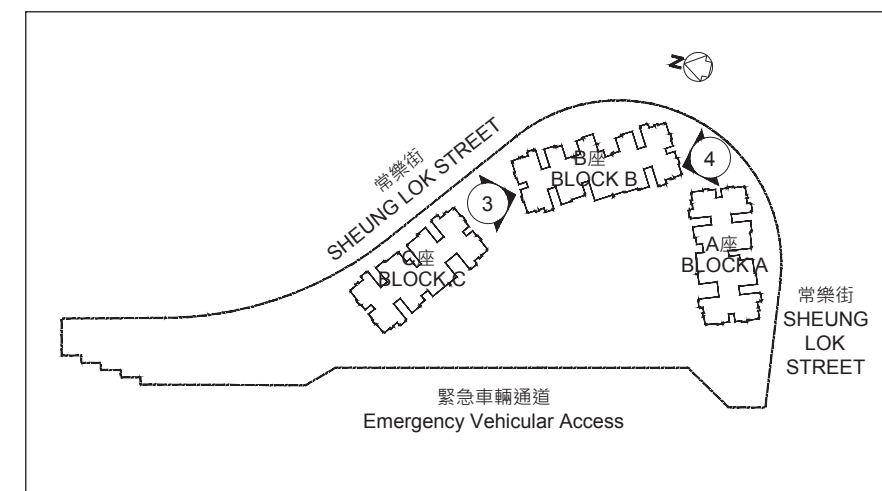
B 座
Block B



西北面立面圖“3”
North West Elevation Plan "3"



東南面立面圖“4”
South East Elevation Plan "4"



指示圖 KEY PLAN

本圖所顯示的立面：

- (1) 以2019年2月15日的該項目的經批准的建築圖則為基礎擬備；及
- (2) 大致上與該項目的外觀一致。

The elevations shown on this plan:

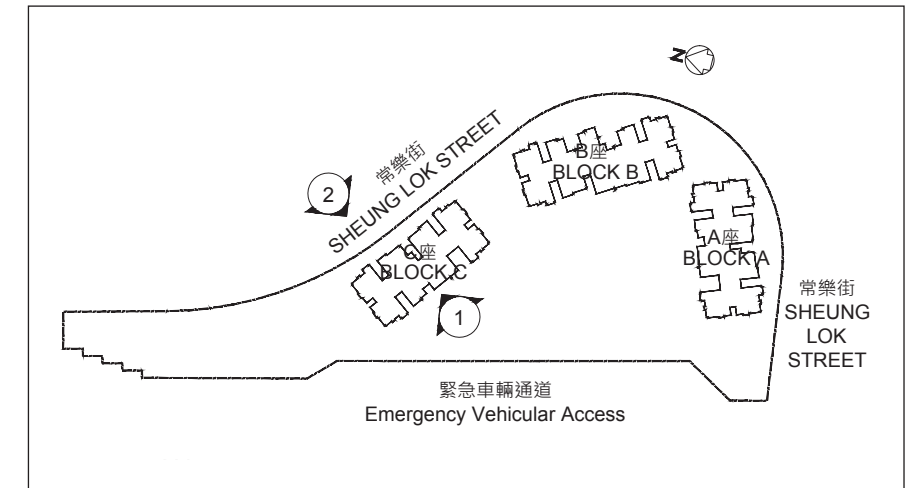
- (1) are prepared on the basis of the approved general building plans for the Development as of 15 February 2019; and
- (2) are in general accordance with the outward appearance of the Development.

立面圖
Elevation Plan



西南面立面圖“1”
South West Elevation Plan "1"

東北面立面圖“2”
North East Elevation Plan "2"



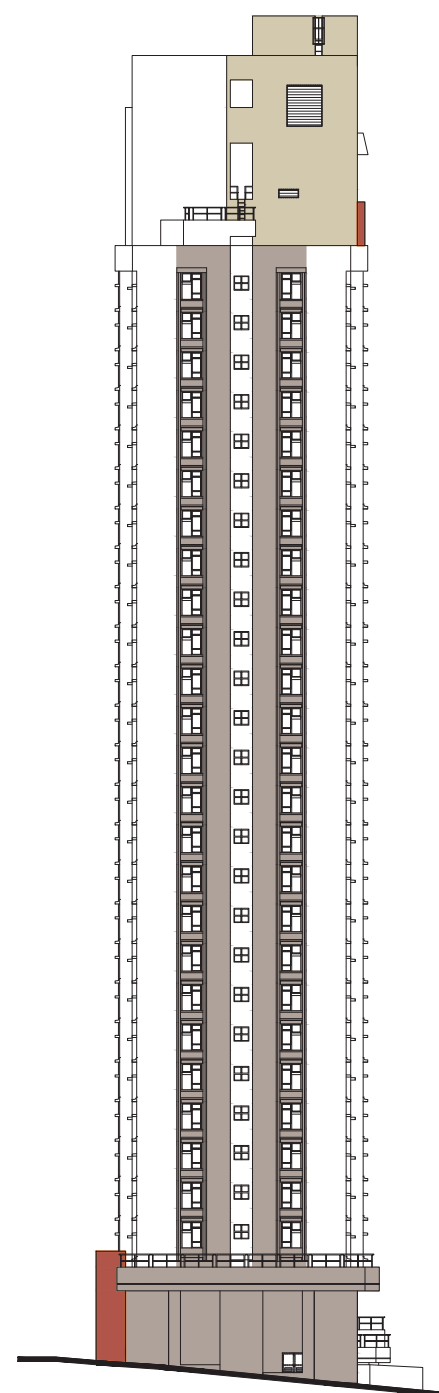
指示圖 KEY PLAN

本圖所顯示的立面：

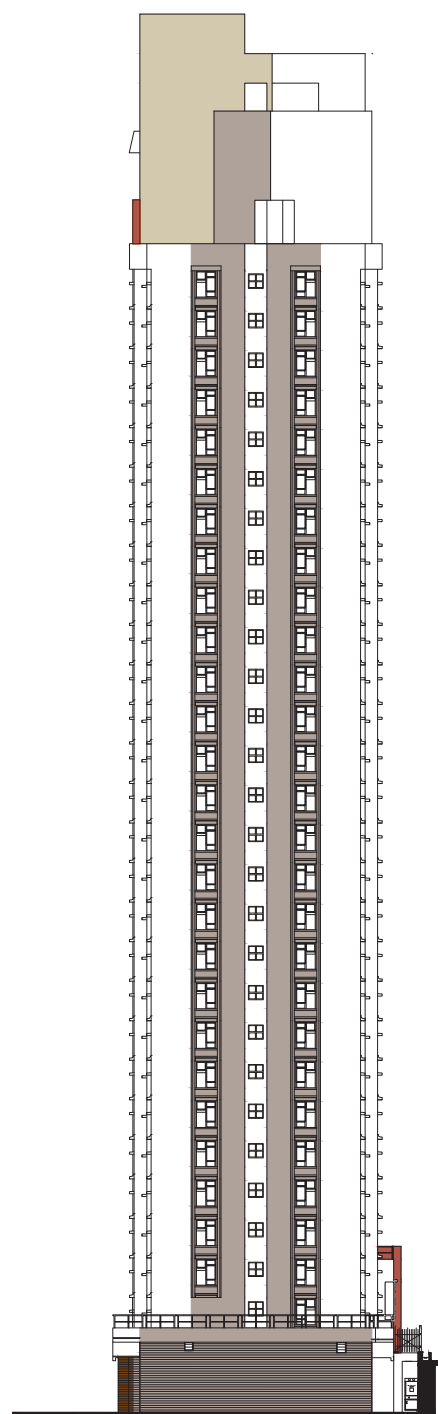
- (1) 以2019年2月15日的該項目的經批准的建築圖則為基礎擬備；及
- (2) 大致上與該項目的外觀一致。

The elevations shown on this plan:

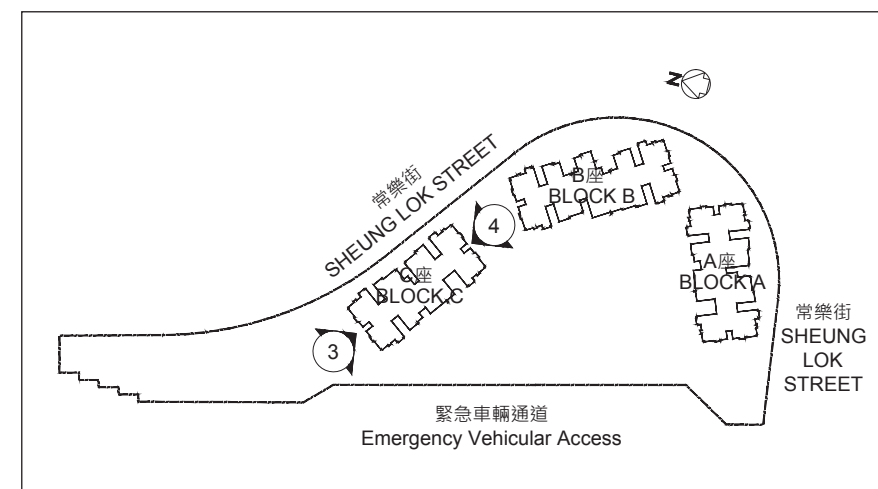
- (1) are prepared on the basis of the approved general building plans for the Development as of 15 February 2019; and
- (2) are in general accordance with the outward appearance of the Development.



西北面立面圖“3”
North West Elevation Plan “3”



東南面立面圖“4”
South East Elevation Plan “4”



指示圖 KEY PLAN

本圖所顯示的立面：

- (1) 以2019年2月15日的該項目的經批准的建築圖則為基礎擬備；及
- (2) 大致上與該項目的外觀一致。

The elevations shown on this plan:

- (1) are prepared on the basis of the approved general building plans for the Development as of 15 February 2019; and
- (2) are in general accordance with the outward appearance of the Development.

		有上蓋遮蓋 Covered	無上蓋遮蓋 Uncovered	總面積 Total Area
住客會所 (包括供住客使用的任何康樂設施) Residents' clubhouse (including any recreational facilities for residents' use)	平方米 sq.m.	不適用 Not applicable	不適用 Not applicable	不適用 Not applicable
	平方呎 sq.ft.	不適用 Not applicable	不適用 Not applicable	不適用 Not applicable
位於發展項目中的建築物的天台或在天台和最低一層住宅樓層之間的任何一層的、供住客使用的公用花園或遊樂地方 (不論是稱為公用空中花園或有其他名稱) Communal garden or play area for residents' use on the roof, or on any floor between the roof and the lowest residential floor, of a building in the Development (whether known as a communal sky garden or otherwise)	平方米 sq.m.	不適用 Not applicable	不適用 Not applicable	不適用 Not applicable
	平方呎 sq.ft.	不適用 Not applicable	不適用 Not applicable	不適用 Not applicable
位於發展項目中的建築物的最低一層住宅樓層以下的、供住客使用的公用花園或遊樂地方 (不論是稱為有蓋及園景的遊樂場或有其他名稱) Communal garden or play area for residents' use below the lowest residential floor of a building in the Development (whether known as a covered and landscaped play area or otherwise)	平方米 sq.m.	118.4	156.4	274.8
	平方呎 sq.ft.	1,274	1,683	2,957

註： 上述以平方呎列明之面積是以1平方米=10.764平方呎換算，並四捨五入至整數平方呎。

Note: The areas as specified above in square feet are converted at a rate of 1 square metre=10.764 square feet and rounded to the nearest whole square foot.

22 閱覽圖則及公契

Inspection of Plans and Deed of Mutual Covenant

- 1 備有關於該發展項目的分區計劃大綱圖的文本供閱覽的互聯網網站的網址為 www.ozp.tpb.gov.hk。
 - 2 冠德苑的公契在將住宅物業提供出售的日期的最新擬稿的文本存放在住宅物業的售樓處於開放時間內以供閱覽。
 - 3 無須為閱覽付費。
- 1 A copy of the Outline Zoning Plan relating to the Development is available at www.ozp.tpb.gov.hk.
 - 2 A copy of the latest draft of the Deed of Mutual Covenant in respect of Kwun Tak Court as at the date on which the residential property is offered to be sold is available for inspection during opening hours at the place at which the residential property is offered to be sold.
 - 3 The inspection is free of charge.