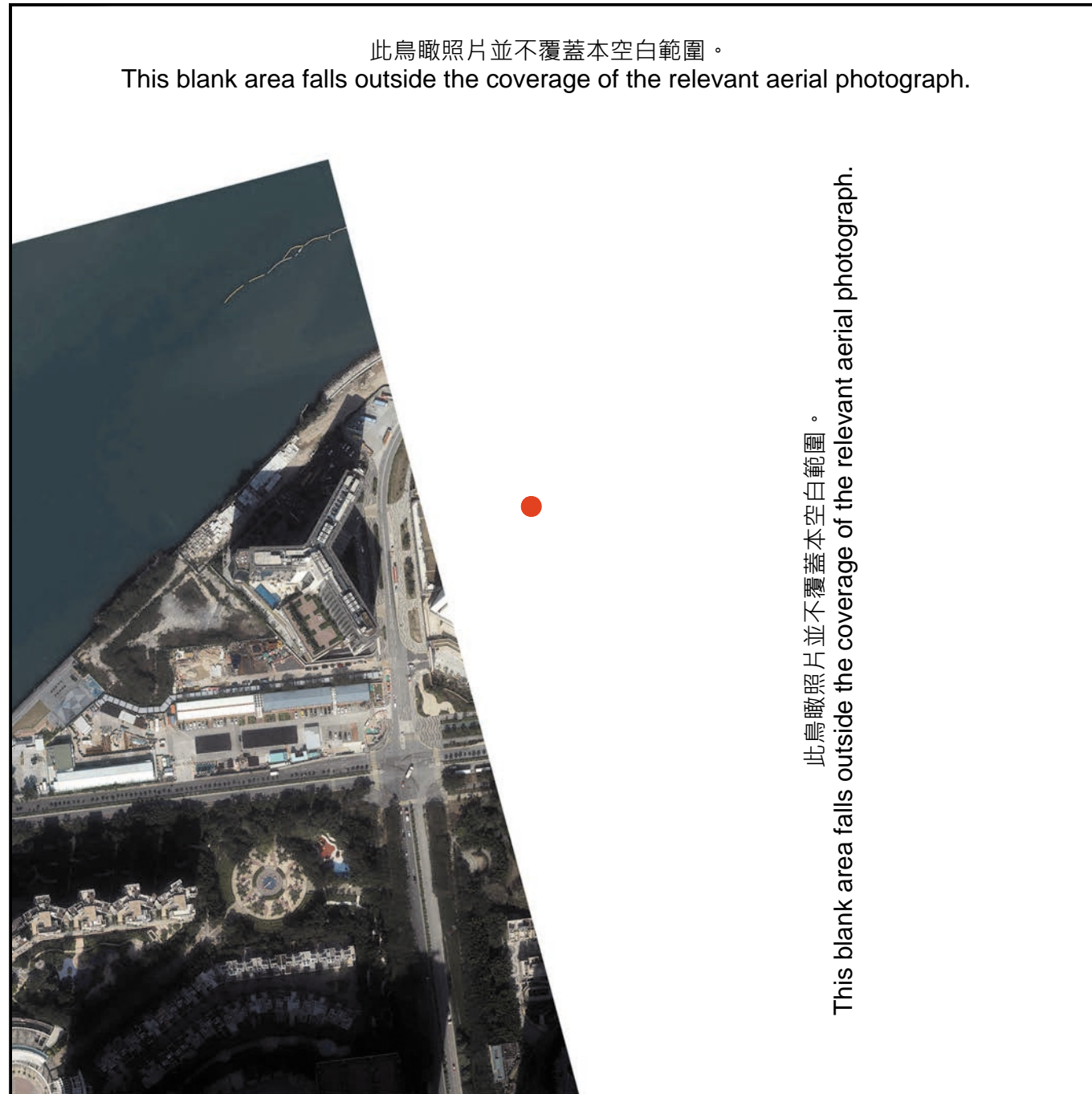


發展項目的鳥瞰照片
Aerial Photograph of the Development



● 裕雅苑
Yu Nga Court

摘錄自地政總署測繪處於2022年12月20日在6,900呎飛行高度拍攝之鳥瞰照片，照片編號為E177101C。照片由香港地理數據站提供，香港特別行政區政府為知識產權擁有人。

Adopted from part of the aerial photograph taken by the Survey and Mapping Office of the Lands Department at a flying height of 6,900 feet, photo no. E177101C, dated 20 December 2022. The photograph is provided by the Hong Kong GeoData Store and intellectual property rights are owned by the Government of the HKSAR.

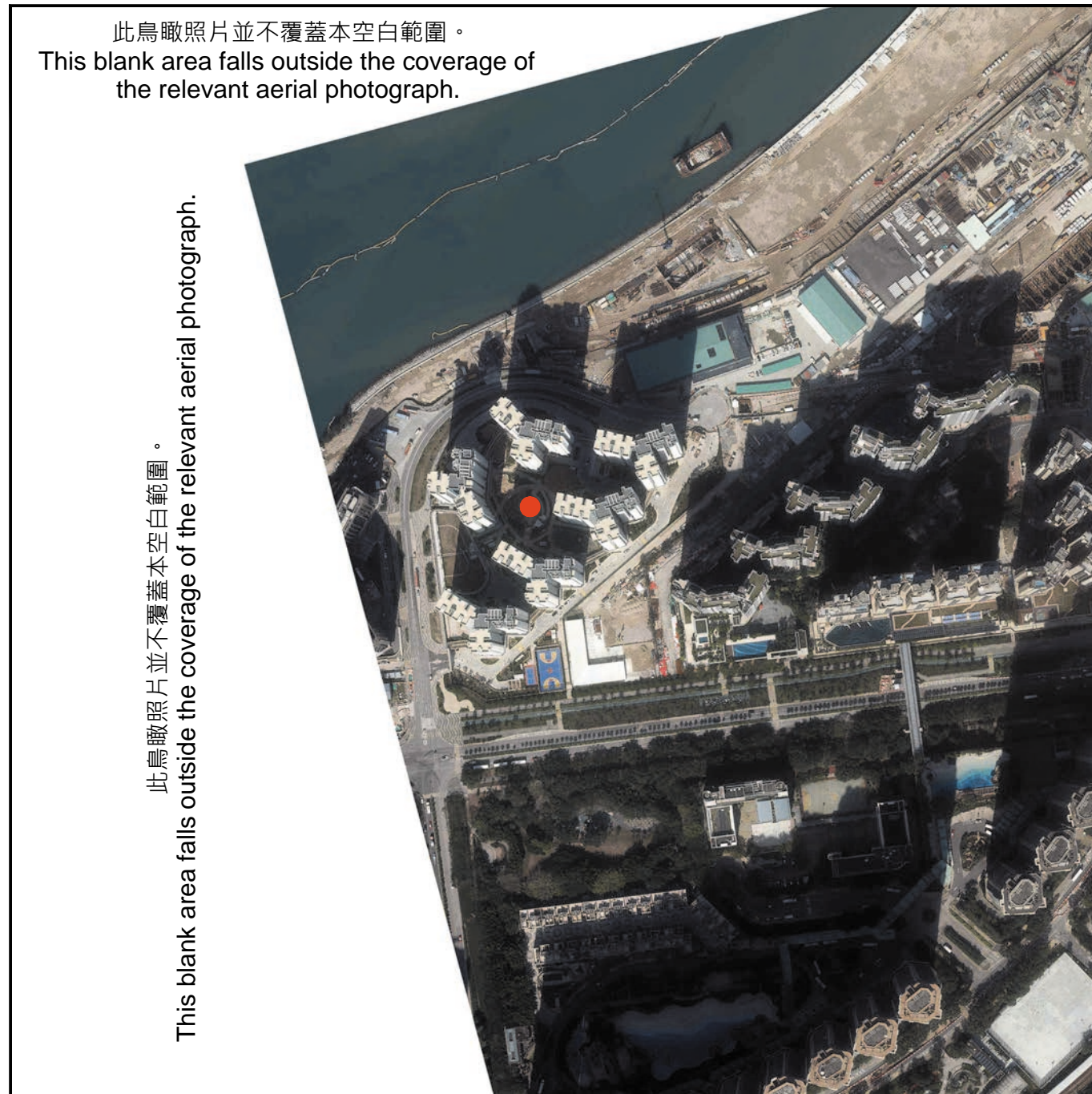
註:

1. 該發展項目的鳥瞰照片之副本可於房委會客務中心開放時間內免費查閱。
2. 由於該發展項目的邊界不規則的技術原因，此鳥瞰照片所顯示的範圍可能超過《一手住宅物業銷售條例》所要求顯示的範圍。

Notes:

1. Copy of the aerial photograph of the Development is available for free inspection during opening hours at the HA Customer Service Centre.
2. The aerial photograph may show more than the area required under the Residential Properties (First-hand Sales) Ordinance due to the technical reason that the boundary of the Development is irregular.

發展項目的鳥瞰照片
Aerial Photograph of the Development



● 裕雅苑
Yu Nga Court

摘錄自地政總署測繪處於2022年12月20日在6,900呎飛行高度拍攝之鳥瞰照片，照片編號為E177098C。照片由香港地理數據站提供，香港特別行政區政府為知識產權擁有人。

Adopted from part of the aerial photograph taken by the Survey and Mapping Office of the Lands Department at a flying height of 6,900 feet, photo no. E177098C, dated 20 December 2022. The photograph is provided by the Hong Kong GeoData Store and intellectual property rights are owned by the Government of the HKSAR.

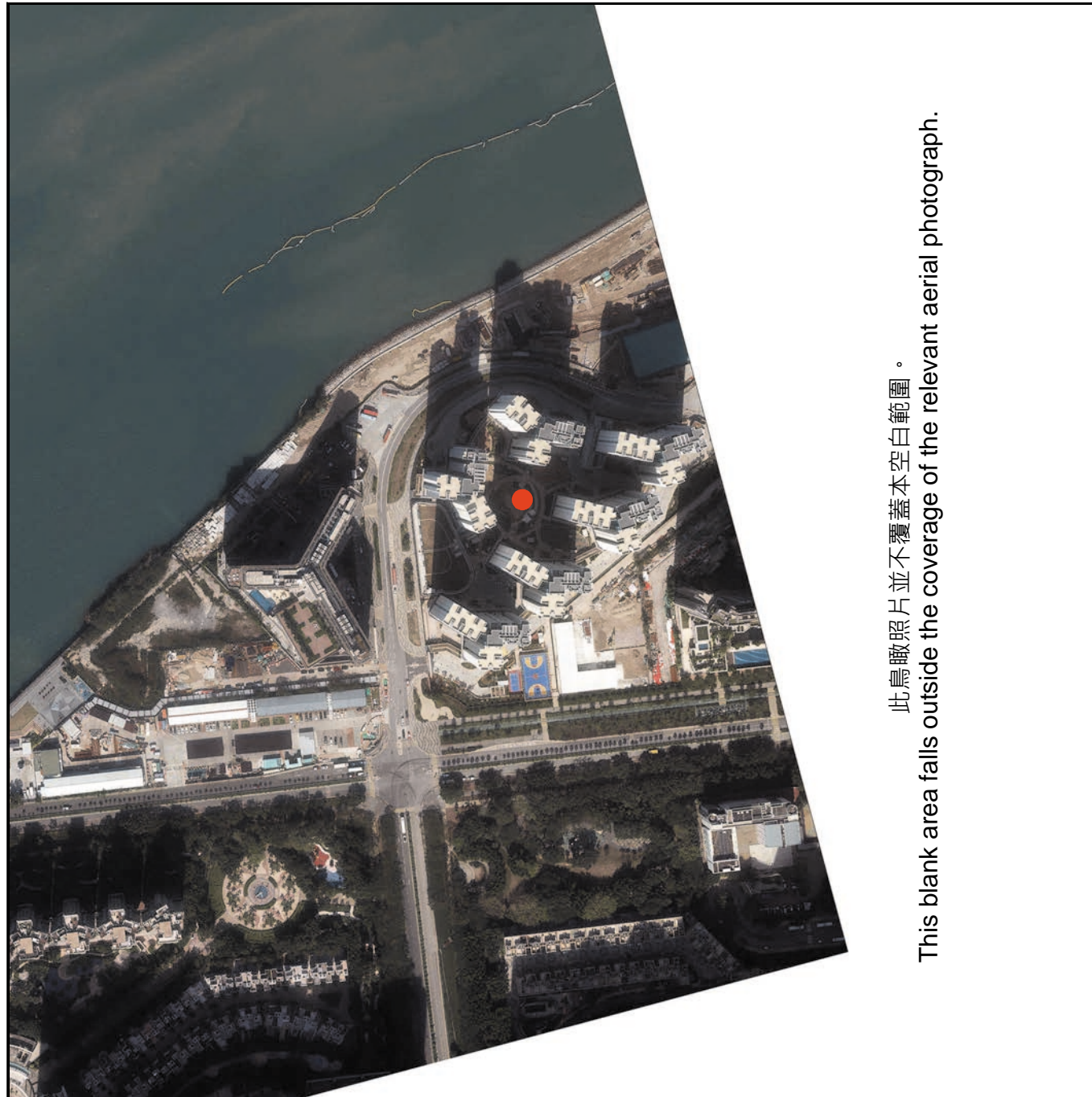
註:

1. 該發展項目的鳥瞰照片之副本可於房委會客務中心開放時間內免費查閱。
2. 由於該發展項目的邊界不規則的技術原因，此鳥瞰照片所顯示的範圍可能超過《一手住宅物業銷售條例》所要求顯示的範圍。

Notes:

1. Copy of the aerial photograph of the Development is available for free inspection during opening hours at the HA Customer Service Centre.
2. The aerial photograph may show more than the area required under the Residential Properties (First-hand Sales) Ordinance due to the technical reason that the boundary of the Development is irregular.

發展項目的鳥瞰照片
Aerial Photograph of the Development



● 裕雅苑
Yu Nga Court

摘錄自地政總署測繪處於2022年12月20日在6,900呎飛行高度拍攝之鳥瞰照片，照片編號為E176922C。照片由香港地理數據站提供，香港特別行政區政府為知識產權擁有人。

Adopted from part of the aerial photograph taken by the Survey and Mapping Office of the Lands Department at a flying height of 6,900 feet, photo no. E176922C, dated 20 December 2022. The photograph is provided by the Hong Kong GeoData Store and intellectual property rights are owned by the Government of the HKSAR.

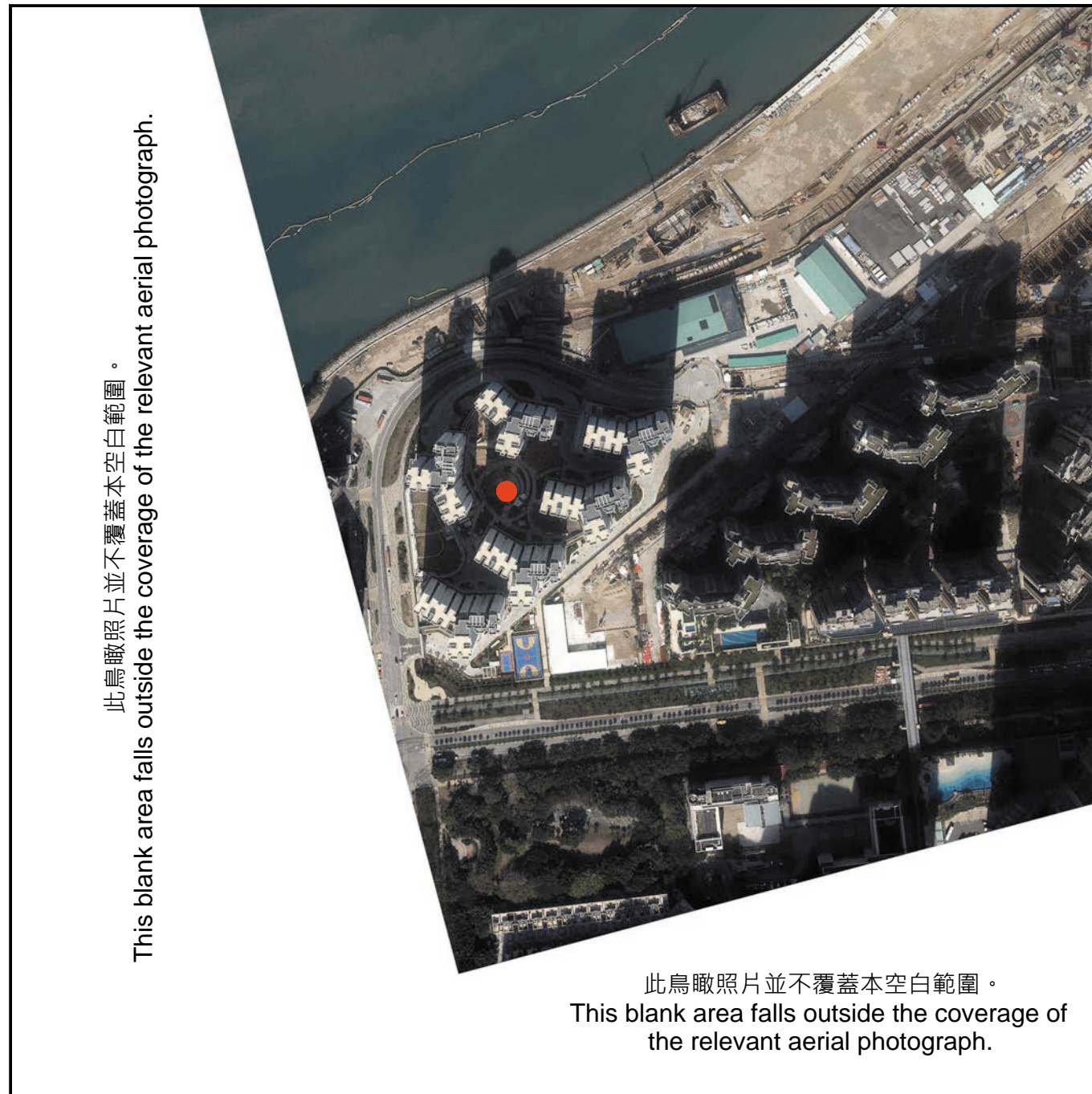
註:

1. 該發展項目的鳥瞰照片之副本可於房委會客務中心開放時間內免費查閱。
2. 由於該發展項目的邊界不規則的技術原因，此鳥瞰照片所顯示的範圍可能超過《一手住宅物業銷售條例》所要求顯示的範圍。

Notes:

1. Copy of the aerial photograph of the Development is available for free inspection during opening hours at the HA Customer Service Centre.
2. The aerial photograph may show more than the area required under the Residential Properties (First-hand Sales) Ordinance due to the technical reason that the boundary of the Development is irregular.

發展項目的鳥瞰照片
Aerial Photograph of the Development



● 裕雅苑
Yu Nga Court

摘錄自地政總署測繪處於2022年12月20日在6,900呎飛行高度拍攝之鳥瞰照片，照片編號為E176920C。照片由香港地理數據站提供，香港特別行政區政府為知識產權擁有人。

Adopted from part of the aerial photograph taken by the Survey and Mapping Office of the Lands Department at a flying height of 6,900 feet, photo no. E176920C, dated 20 December 2022. The photograph is provided by the Hong Kong GeoData Store and intellectual property rights are owned by the Government of the HKSAR.

註:

1. 該發展項目的鳥瞰照片之副本可於房委會客務中心開放時間內免費查閱。
2. 由於該發展項目的邊界不規則的技術原因，此鳥瞰照片所顯示的範圍可能超過《一手住宅物業銷售條例》所要求顯示的範圍。

Notes:

1. Copy of the aerial photograph of the Development is available for free inspection during opening hours at the HA Customer Service Centre.
2. The aerial photograph may show more than the area required under the Residential Properties (First-hand Sales) Ordinance due to the technical reason that the boundary of the Development is irregular.