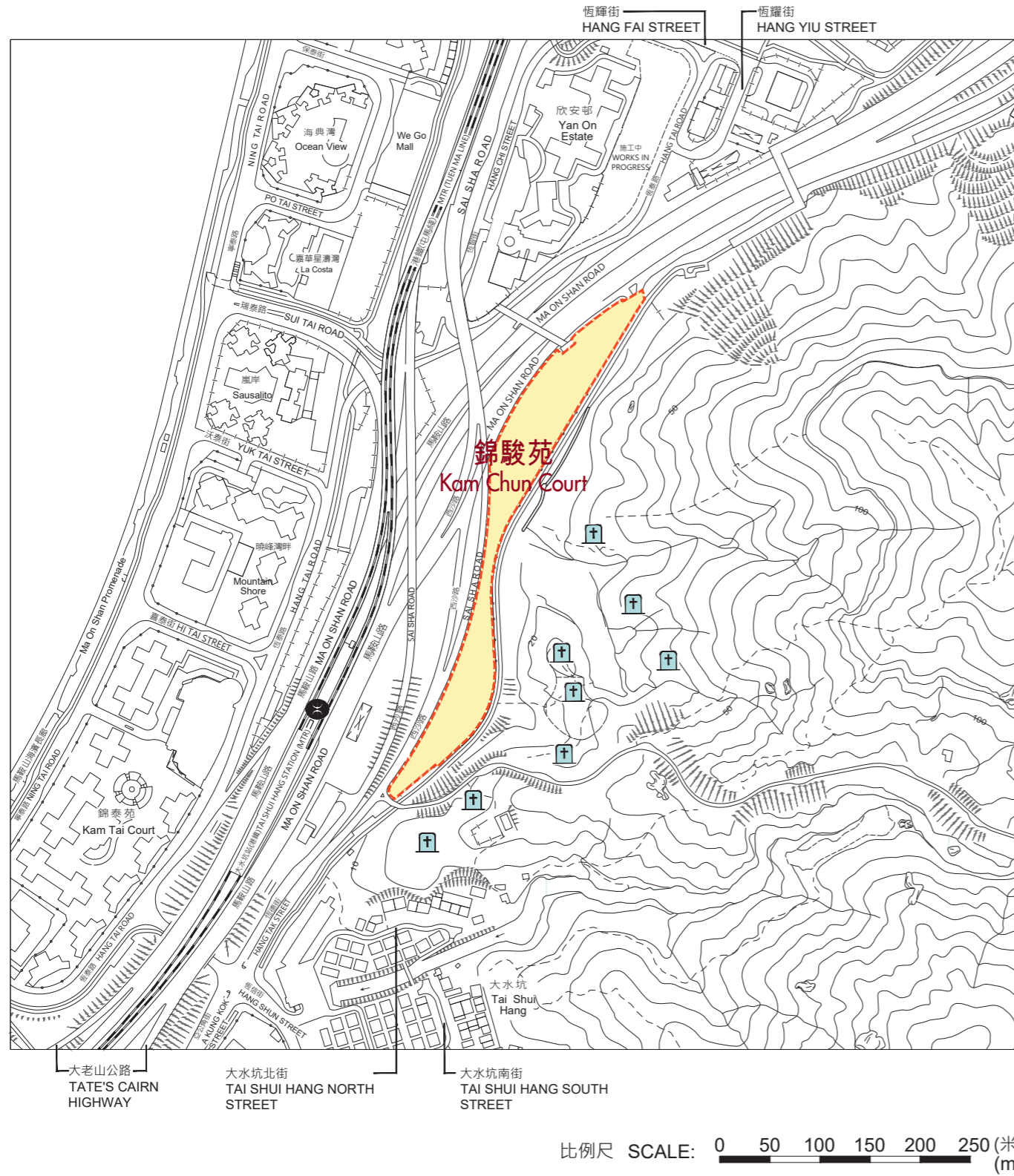


# 發展項目的位置圖

## LOCATION PLAN OF THE DEVELOPMENT



### 圖例 NOTATION

 斜坡上有零散山墳\*  
Slope with Scattered Graves\*

\* 只作識別用

\* For Identification Purposes Only

此位置圖是參考地政總署測繪處於2024年7月4日出版之數碼地形圖(編號為T7-SE-B)及2024年8月4日出版之數碼地形圖(編號分別為T7-NE-C、T7-NE-D及T7-SE-A)製作，有需要處經修正處理。

地圖由空間數據共享平台入門網站提供，香港特別行政區政府為知識產權擁有人。

The Location Plan is prepared with reference to the Digital Topographic Map No. T7-SE-B dated 4 July 2024 and the Digital Topographic Map Nos. T7-NE-C, T7-NE-D and T7-SE-A all dated 4 August 2024 from Survey and Mapping Office of the Lands Department, with adjustments where necessary.

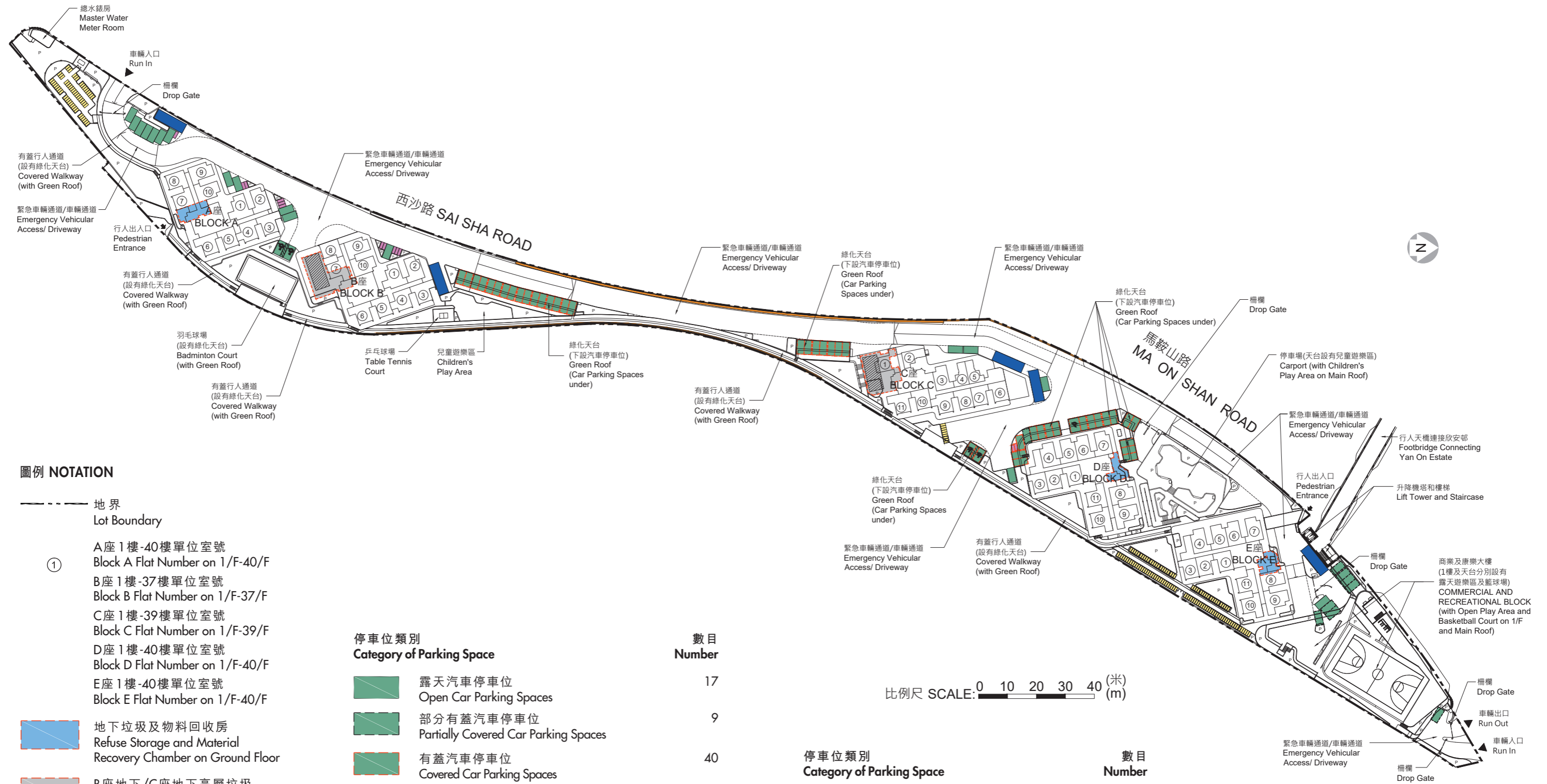
The map is provided by the Common Spatial Data Infrastructure Portal and intellectual property rights are owned by the Government of the HKSAR.

註：賣方建議買方到該發展項目作實地考察，以對該發展項目、其周邊地區環境及附近的公共設施有較佳的了解。

Note: The Vendor advises purchasers to conduct on-site visit for a better understanding of the Development, its surrounding environment and the public facilities nearby.

# 發展項目的布局圖

## LAYOUT PLAN OF THE DEVELOPMENT



### 圖例 NOTATION

- 地界  
Lot Boundary
- ① A座 1樓-40樓單位室號  
Block A Flat Number on 1/F-40/F
- B座 1樓-37樓單位室號  
Block B Flat Number on 1/F-37/F
- C座 1樓-39樓單位室號  
Block C Flat Number on 1/F-39/F
- D座 1樓-40樓單位室號  
Block D Flat Number on 1/F-40/F
- E座 1樓-40樓單位室號  
Block E Flat Number on 1/F-40/F
- 地下垃圾及物料回收房  
Refuse Storage and Material Recovery Chamber on Ground Floor
- B座地下/C座地下高層垃圾及物料回收房及廢物收集站  
Refuse Storage and Material Recovery Chamber and Junk Collection Point on Ground Floor at Block B / Upper Ground Floor at Block C
- 擋土牆  
Retaining Wall
- P 花槽  
Planter

停車位類別 Category of Parking Space	數目 Number
露天汽車停車位 Open Car Parking Spaces	17
部分有蓋汽車停車位 Partially Covered Car Parking Spaces	9
有蓋汽車停車位 Covered Car Parking Spaces	40
露天汽車停車位(暢通易達停車位) Open Car Parking Spaces (Accessible Parking Space)	2
有蓋汽車停車位(暢通易達停車位) Covered Car Parking Spaces (Accessible Parking Space)	3
露天單車停車位 Open Bicycle Parking Spaces	67
部分有蓋單車停車位 Partially Covered Bicycle Parking Spaces	107

比例尺 SCALE: 0 10 20 30 40 (米)

停車位類別 Category of Parking Space	數目 Number
露天電單車停車位 Open Motorcycle Parking Spaces	11
有蓋電單車停車位 Covered Motorcycle Parking Spaces	2
露天上落客貨停車位 Open Loading and Unloading Bays	5
有蓋垃圾車停車位 Covered Spaces for Refuse Collection Vehicle	2

發展項目於停車場、商業及康樂大樓設有43個有蓋汽車停車位、1個有蓋暢通易達汽車停車位、8個有蓋電單車停車位及1個有蓋上落客貨停車位。此外，商業及康樂大樓另設有寫字樓。



There are 43 numbers of covered Car Parking Spaces, 1 number of covered Accessible Car Parking Space, 8 numbers of covered Motorcycle Parking Spaces and 1 number of covered Loading and Unloading Bay provided in the Carport and Commercial and Recreational Block of the Development. Besides, there are also Offices at the Commercial and Recreational Block.



# A座標準樓層平面圖(2樓至40樓)

## BLOCK A TYPICAL FLOOR PLAN (2/F-40/F)

### 圖例 NOTATION

BATH	浴室	Bathroom
HR	消防喉轆	Hose Reel
KIT	廚房	Kitchen
LIV/DIN	客/飯廳	Living/Dining Room
RS & MRR	垃圾及物料回收室	Refuse Storage and Material Recovery Room
TELECOM AND ELV ROOM	電訊及特低壓機房	Telecommunications and Extra Low Voltage Room
ELEC. METER ROOM	電錶房	Electrical Meter Room
W.M.C.	水錶櫃	Water Meter Cupboard
P.D.	管道槽	Pipe Duct
	減音窗	Acoustic Window
	固定窗	Fixed Window

### 註:

1. 平面圖所列之數字為以毫米標示之建築結構尺寸。
2. 每個住宅物業的層與層之間的高度為2.75米(40樓除外)。
3. 2樓至39樓每個住宅物業的樓板(不包括灰泥)的厚度為160毫米及250毫米(1、2、9及10號單位除外)。
4. 2樓至39樓1、2、9及10號單位的住宅物業的樓板(不包括灰泥)的厚度為130毫米、160毫米及250毫米。
5. 40樓每個住宅物業的樓板(不包括灰泥)的厚度為200毫米及290毫米(1、2、9及10號單位除外)。
6. 40樓1、2、9及10號單位住宅物業的樓板(不包括灰泥)的厚度為200毫米、290毫米及450毫米。
7. 大廈設有3部升降機。每個住宅樓層均有2部升降機到達。
8. 為減低道路交通噪音的影響，部分單位將設有減音露台、減音窗及固定窗。

### Notes:



1. The dimensions on the floor plan are all structural dimensions in millimetre.
2. The floor-to-floor height of each residential property is 2.75m (except 40/F). The floor-to-floor height of each residential property on 40/F is 2.79m.
3. The thicknesses of the floor slabs (excluding plaster) of each residential property on 2/F to 39/F are 160mm and 250mm (except Flats 1, 2, 9 and 10). The thicknesses of the floor slabs (excluding plaster) of Flats 1, 2, 9 and 10 on 2/F to 39/F are 130mm, 160mm and 250mm. The thicknesses of the floor slabs (excluding plaster) of each residential property on 40/F are 200mm and 290mm (except Flats 1, 2, 9 and 10). The thicknesses of the floor slabs (excluding plaster) of Flats 1, 2, 9 and 10 on 40/F are 200mm, 290mm and 450mm.
4. There are 3 lifts in the building. Each residential floor is served by 2 lifts.
5. In order to mitigate the impact of road traffic noise, acoustic balconies, acoustic windows and fixed windows are provided in some flats.



# B座標準樓層平面圖(2樓至37樓)

## BLOCK B TYPICAL FLOOR PLAN (2/F-37/F)

### 圖例 NOTATION

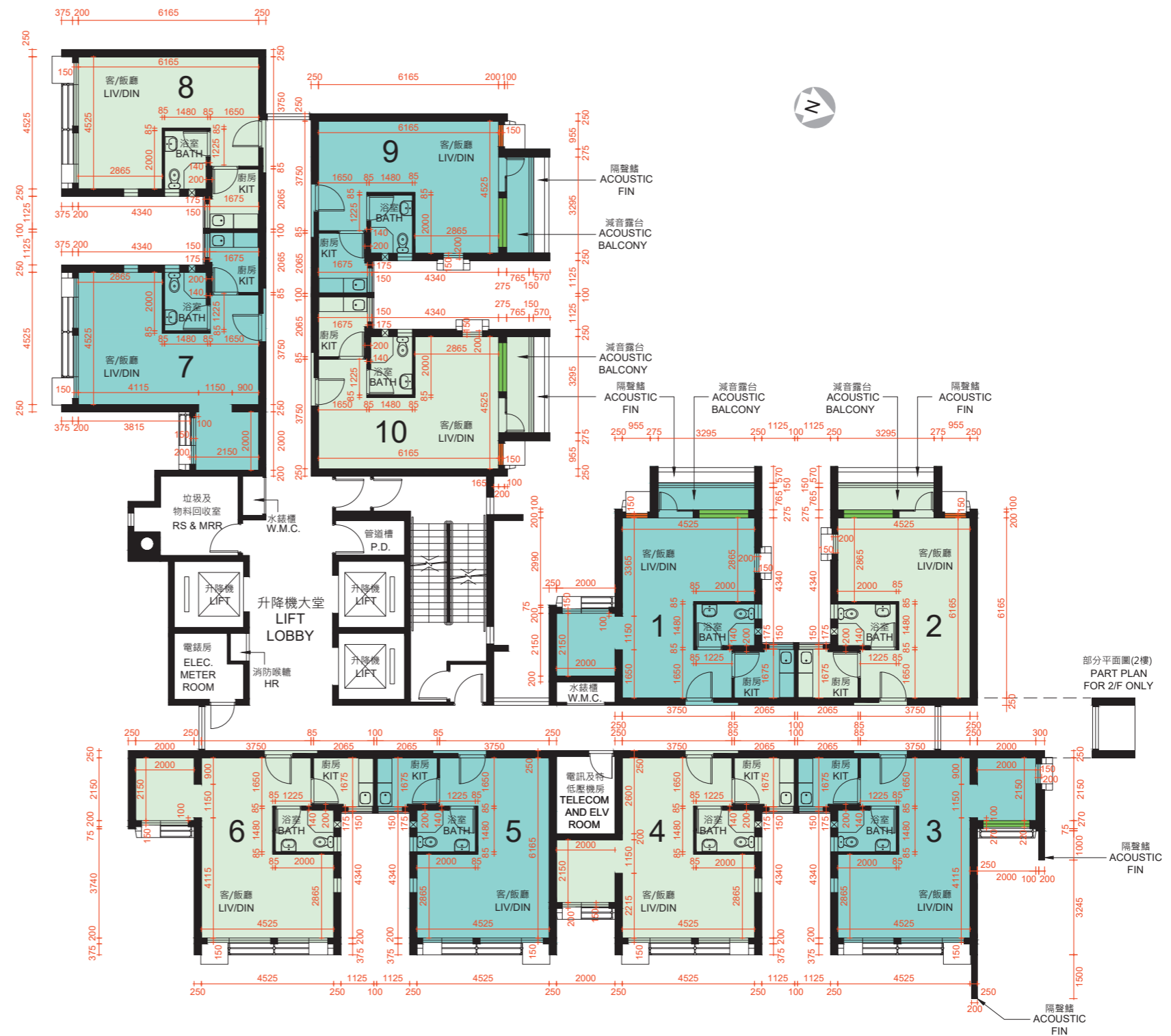
BATH	浴室	Bathroom
HR	消防喉轆	Hose Reel
KIT	廚房	Kitchen
LIV/DIN	客/飯廳	Living/Dining Room
RS & MRR	垃圾及物料回收室	Refuse Storage and Material Recovery Room
TELECOM AND ELV ROOM	電訊及特低壓機房	Telecommunications and Extra Low Voltage Room
ELEC. METER ROOM	電錶房	Electrical Meter Room
W.M.C.	水錶櫃	Water Meter Cupboard
P.D.	管道槽	Pipe Duct
	減音窗	Acoustic Window
	固定窗	Fixed Window

### 註:

1. 平面圖所列之數字為以毫米標示之建築結構尺寸。
2. 每個住宅物業的層與層之間的高度為2.75米(37樓除外)。
3. 37樓每個住宅物業的層與層之間的高度為2.79米。
3. 2樓至36樓每個住宅物業的樓板(不包括灰泥)的厚度為160毫米及250毫米(1、2、9及10號單位除外)。
- 2樓至36樓1、2、9及10號單位的住宅物業的樓板(不包括灰泥)的厚度為130毫米、160毫米及250毫米。
- 37樓每個住宅物業的樓板(不包括灰泥)的厚度為200毫米及290毫米(1、2、9及10號單位除外)。
- 37樓1、2、9及10號單位住宅物業的樓板(不包括灰泥)的厚度為200毫米、290毫米及450毫米。
4. 大廈設有3部升降機。每個住宅樓層均有2部升降機到達。
5. 為減低道路交通噪音的影響，部分單位將設有減音露台、減音窗及固定窗。

### Notes:

1. The dimensions on the floor plan are all structural dimensions in millimetre.
2. The floor-to-floor height of each residential property is 2.75m (except 37/F). The floor-to-floor height of each residential property on 37/F is 2.79m.
3. The thicknesses of the floor slabs (excluding plaster) of each residential property on 2/F to 36/F are 160mm and 250mm (except Flats 1, 2, 9 and 10). The thicknesses of the floor slabs (excluding plaster) of Flats 1, 2, 9 and 10 on 2/F to 36/F are 130mm, 160mm and 250mm. The thicknesses of the floor slabs (excluding plaster) of each residential property on 37/F are 200mm and 290mm (except Flats 1, 2, 9 and 10). The thicknesses of the floor slabs (excluding plaster) of Flats 1, 2, 9 and 10 on 37/F are 200mm, 290mm and 450mm.
4. There are 3 lifts in the building. Each residential floor is served by 2 lifts.
5. In order to mitigate the impact of road traffic noise, acoustic balconies, acoustic windows and fixed windows are provided in some flats.





比例尺 SCALE: 0 5 (米) (m)

# C座標準樓層平面圖(2樓至39樓)

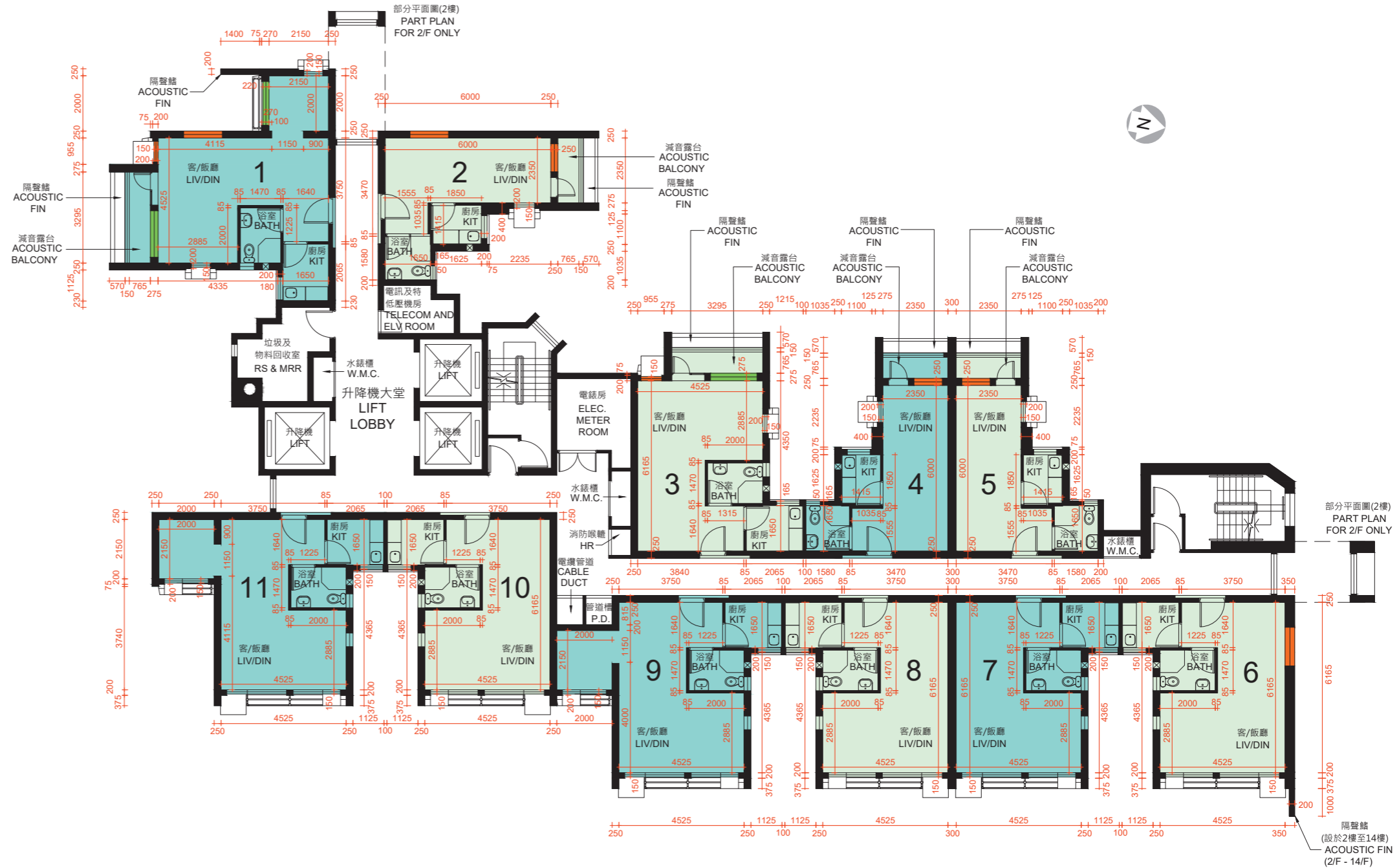
## BLOCK C TYPICAL FLOOR PLAN (2/F-39/F)

### 圖例 NOTATION

BATH	浴室	Bathroom
HR	消防喉轆	Hose Reel
KIT	廚房	Kitchen
LIV/DIN	客/飯廳	Living/Dining Room
RS & MRR	垃圾及物料回收室	Refuse Storage and Material Recovery Room
TELECOM AND ELV ROOM	電訊及特低壓機房	Telecommunications and Extra Low Voltage Room
ELEC. METER ROOM	電錶房	Electrical Meter Room
W.M.C.	水錶櫃	Water Meter Cupboard
P.D.	管道槽	Pipe Duct
	減音窗	Acoustic Window
	固定窗	Fixed Window

- 註：
1. 平面圖所列之數字為以毫米標示之建築結構尺寸。
  2. 每個住宅物業的層與層之間的高度為2.75米(39樓除外)。
  3. 2樓至38樓每個住宅物業的層與層之間的高度為2.79米。
  3. 2樓至38樓每個住宅物業的樓板(不包括灰泥)的厚度為160毫米及215毫米(1、2、3、4及5號單位除外)。
  3. 2樓至38樓1、2、3、4及5號單位的住宅物業的樓板(不包括灰泥)的厚度為130毫米、160毫米及215毫米。
  3. 39樓每個住宅物業的樓板(不包括灰泥)的厚度為200毫米(1、2、3、4及5號單位除外)。
  3. 39樓1、2、3、4及5號單位住宅物業的樓板(不包括灰泥)的厚度為200毫米及450毫米。
  4. 大廈設有3部升降機。每個住宅樓層均有2部升降機到達。
  5. 為減低道路交通噪音的影響，部分單位將設有減音露台、減音窗及固定窗。

- Notes:
1. The dimensions on the floor plan are all structural dimensions in millimetre.
  2. The floor-to-floor height of each residential property is 2.75m (except 39/F).
  2. The floor-to-floor height of each residential property on 39/F is 2.79m.
  3. The thicknesses of the floor slabs (excluding plaster) of each residential property on 2/F to 38/F are 160mm and 215mm (except Flats 1, 2, 3, 4 and 5).
  3. The thicknesses of the floor slabs (excluding plaster) of Flats 1, 2, 3, 4 and 5 on 2/F to 38/F are 130mm, 160mm and 215mm.
  3. The thickness of the floor slab (excluding plaster) of each residential property on 39/F is 200mm (except Flats 1, 2, 3, 4 and 5).
  3. The thicknesses of the floor slabs (excluding plaster) of Flats 1, 2, 3, 4 and 5 on 39/F are 200mm and 450mm.
  4. There are 3 lifts in the building. Each residential floor is served by 2 lifts.
  5. In order to mitigate the impact of road traffic noise, acoustic balconies, acoustic windows and fixed windows are provided in some flats.





0 5(米)  
比例尺 SCALE:



# D座標準樓層平面圖(2樓至40樓)

## BLOCK D TYPICAL FLOOR PLAN (2/F-40/F)

### 圖例 NOTATION

BATH	浴室	Bathroom
HR	消防喉轆	Hose Reel
KIT	廚房	Kitchen
LIV/DIN	客/飯廳	Living/Dining Room
RS & MRR	垃圾及物料回收室	Refuse Storage and Material Recovery Room
TELECOM AND ELV ROOM	電訊及特低壓機房	Telecommunications and Extra Low Voltage Room
ELEC. METER ROOM	電錶房	Electrical Meter Room
W.M.C.	水錶櫃	Water Meter Cupboard
P.D.	管道槽	Pipe Duct
	減音窗	Acoustic Window
	固定窗	Fixed Window

### 註:

1. 平面圖所列之數字為以毫米標示之建築結構尺寸。
2. 每個住宅物業的層與層之間的高度為2.75米(40樓除外)。
3. 2樓至39樓每個住宅物業的樓板(不包括灰泥)的厚度為160毫米及215毫米(4、5、6、7、8及9號單位除外)。
4. 2樓至39樓4、5、6、7、8及9號單位的住宅物業的樓板(不包括灰泥)的厚度為130毫米、160毫米及215毫米。
5. 40樓每個住宅物業的樓板(不包括灰泥)的厚度為200毫米(4、5、6、7、8及9號單位除外)。
6. 40樓4、5、6、7、8及9號單位每個住宅物業的樓板(不包括灰泥)的厚度為200毫米及450毫米。
7. 大廈設有4部升降機。每個住宅樓層均有2部升降機到達。
8. 為減低道路交通噪音的影響，部分單位將設有減音露台、減音窗及固定窗。

### Notes:

1. The dimensions on the floor plan are all structural dimensions in millimetre.
2. The floor-to-floor height of each residential property is 2.75m (except 40/F).
3. The thicknesses of the floor slabs (excluding plaster) of each residential property on 2/F to 39/F are 160mm and 215mm (except Flats 4, 5, 6, 7, 8 and 9).
4. The thicknesses of the floor slabs (excluding plaster) of Flats 4, 5, 6, 7, 8 and 9 on 2/F to 39/F are 130mm, 160mm and 215mm.
5. The thickness of the floor slab (excluding plaster) of each residential property on 40/F is 200mm (except Flats 4, 5, 6, 7, 8 and 9).
6. The thicknesses of the floor slabs (excluding plaster) of Flats 4, 5, 6, 7, 8 and 9 on 40/F are 200mm and 450mm.
7. There are 4 lifts in the building. Each residential floor is served by 2 lifts.
8. In order to mitigate the impact of road traffic noise, acoustic balconies, acoustic windows and fixed windows are provided in some flats.





比例尺 SCALE: 0 5 (米) (m)

# E座標準樓層平面圖(2樓至40樓)

## BLOCK E TYPICAL FLOOR PLAN (2/F-40/F)

### 圖例 NOTATION

BATH	浴室	Bathroom
HR	消防喉轆	Hose Reel
KIT	廚房	Kitchen
LIV/DIN	客/飯廳	Living/Dining Room
RS & MRR	垃圾及物料回收室	Refuse Storage and Material Recovery Room
TELECOM AND ELV ROOM	電訊及特低壓機房	Telecommunications and Extra Low Voltage Room
ELEC. METER ROOM	電錶房	Electrical Meter Room
W.M.C.	水錶櫃	Water Meter Cupboard
P.D.	管道槽	Pipe Duct
	減音窗	Acoustic Window
	固定窗	Fixed Window

### 註:

1. 平面圖所列之數字為以毫米標示之建築結構尺寸。
2. 每個住宅物業的層與層之間的高度為2.75米(40樓除外)。
3. 40樓每個住宅物業的層與層之間的高度為2.79米。
4. 2樓至39樓每個住宅物業的樓板(不包括灰泥)的厚度為160毫米及215毫米(4、5、6、7、8及9號單位除外)。
5. 2樓至39樓4、5、6、7、8及9號單位的住宅物業的樓板(不包括灰泥)的厚度為130毫米、160毫米及215毫米。
6. 40樓每個住宅物業的樓板(不包括灰泥)的厚度為200毫米(4、5、6、7、8及9號單位除外)。
7. 40樓4、5、6、7、8及9號單位每個住宅物業的樓板(不包括灰泥)的厚度為200毫米及450毫米。
8. 大廈設有4部升降機。每個住宅樓層均有2部升降機到達。
9. 為減低道路交通噪音的影響，部分單位將設有減音露台、減音窗及固定窗。

### Notes:

1. The dimensions on the floor plan are all structural dimensions in millimetre.
2. The floor-to-floor height of each residential property is 2.75m (except 40/F).
3. The floor-to-floor height of each residential property on 40/F is 2.79m.
4. The thicknesses of the floor slabs (excluding plaster) of each residential property on 2/F to 39/F are 160mm and 215mm (except Flats 4, 5, 6, 7, 8 and 9).
5. The thicknesses of the floor slabs (excluding plaster) of Flats 4, 5, 6, 7, 8 and 9 on 2/F to 39/F are 130mm, 160mm and 215mm.
6. The thickness of the floor slab (excluding plaster) of each residential property on 40/F is 200mm (except Flats 4, 5, 6, 7, 8 and 9).
7. The thicknesses of the floor slabs (excluding plaster) of Flats 4, 5, 6, 7, 8 and 9 on 40/F are 200mm and 450mm.
8. There are 4 lifts in the building. Each residential floor is served by 2 lifts.
9. In order to mitigate the impact of road traffic noise, acoustic balconies, acoustic windows and fixed windows are provided in some flats.



比例尺 SCALE:  5 (米) (m)