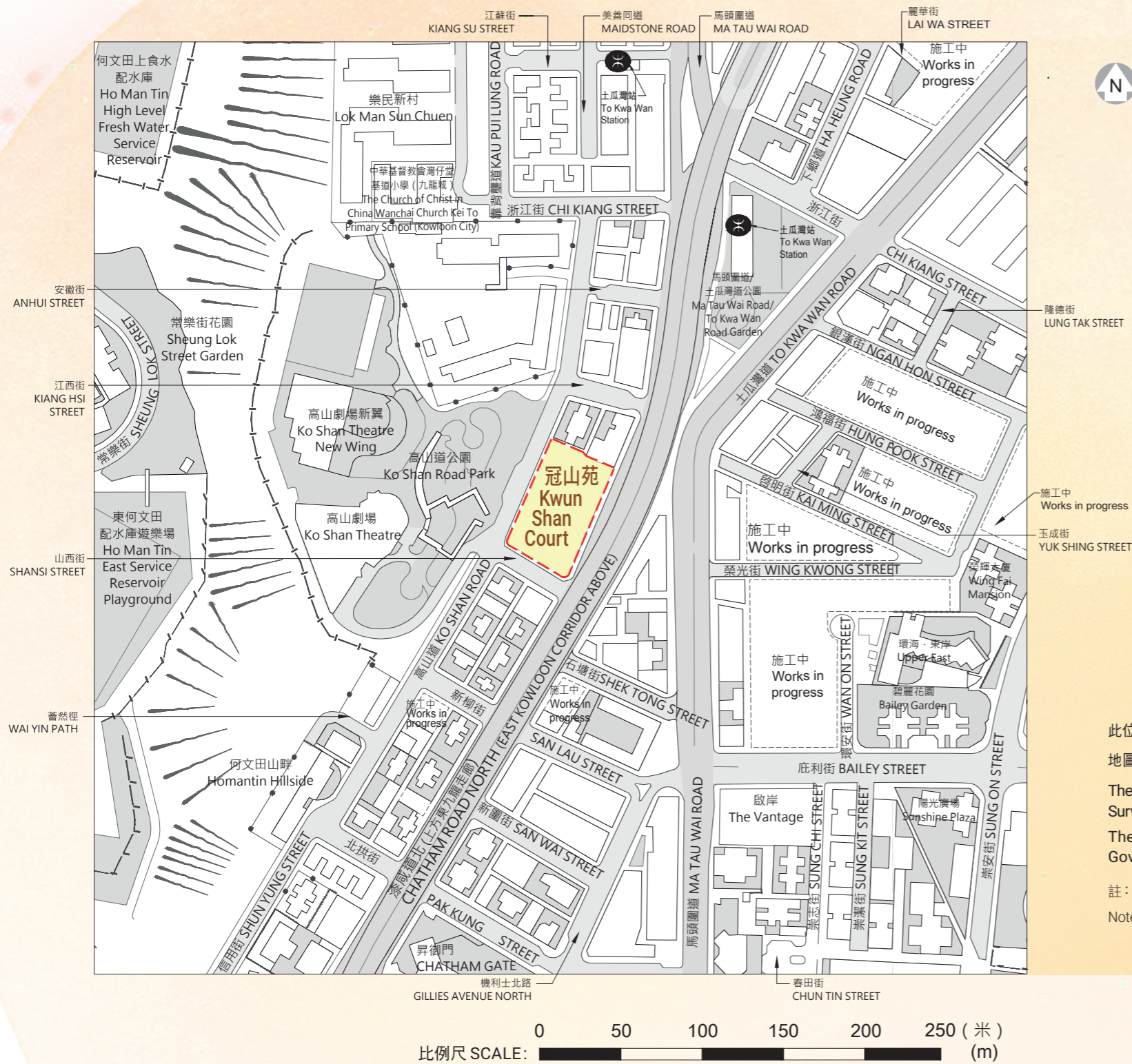


發展項目的位置圖

Location Plan of the Development



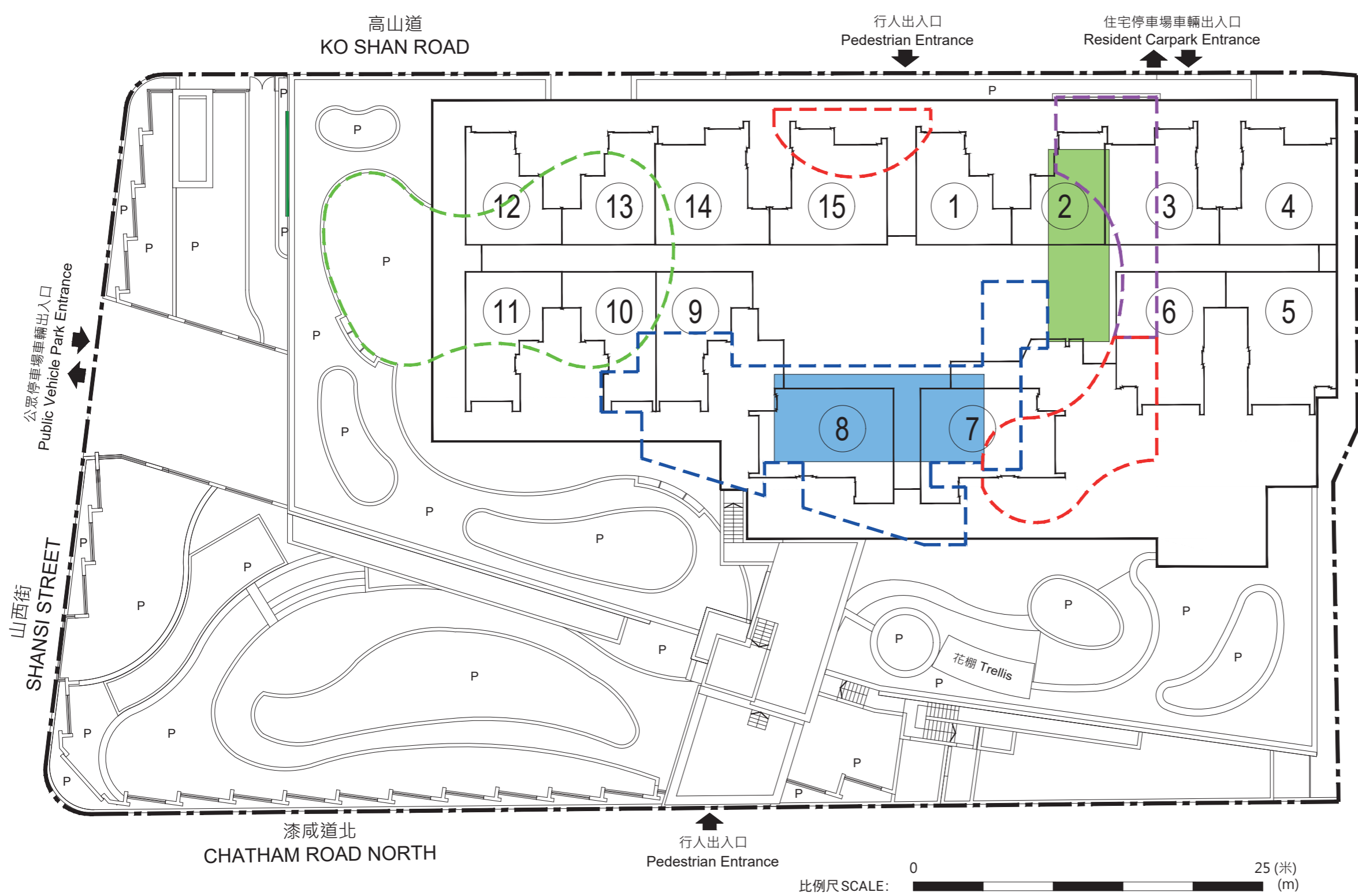
此位置圖是參考地政總署測繪處於2024年8月4日出版之數碼地形圖(編號分別為T11-NE-C及T11-NW-D)製作,有需要處經修正處理。
地圖由空間數據共享平台入門網站提供,香港特別行政區政府為知識產權擁有人。

The Location Plan is prepared with reference to the Digital Topographic Map Nos. T11-NE-C and T11-NW-D all dated 4 August 2024 from Survey and Mapping Office of the Lands Department, with adjustments where necessary.
The map is provided by the Common Spatial Data Infrastructure Portal and intellectual property rights are owned by the Government of the HKSAR.

註: 賣方建議買方到該發展項目作實地考察,以對該發展項目、其周邊地區環境及附近的公共設施有較佳的了解。
Note: The Vendor advises purchasers to conduct on site visit for a better understanding of the Development, its surrounding environment and the public facilities nearby.

發展項目的布局圖

Layout Plan of the Development



圖例 NOTATION

- 地界
Lot Boundary
- 4樓-36樓單位室號
Flat Number on 4/F to 36/F
- 地下垃圾及物料回收房 / 廢物收集站
Refuse Storage and Material Recovery Chamber /
Junk Collection Point on Ground Floor
- 平台三樓兒童遊樂區 / 有蓋兒童遊樂區
Children Play Area / Covered Children Play Area on
Podium Level 3
- 平台三樓有蓋休憩區
Covered Sitting Area on Podium Level 3
- 平台三樓有蓋健身區
Covered Fitness Area on Podium Level 3
- 花槽
Planter
- 垂直綠化
Vertical Greening

停車位類別 Category of Parking Space 數目 Number

	地下有蓋上落客貨車位 Covered Loading and Unloading Bay on Ground Floor	1
	地下有蓋垃圾收集車專用車位 Covered Parking Space for Refuse Collection Vehicles on Ground Floor	1

發展項目於地下低層設有33個公眾有蓋汽車停車位及2個公眾有蓋暢通易達汽車停車位。

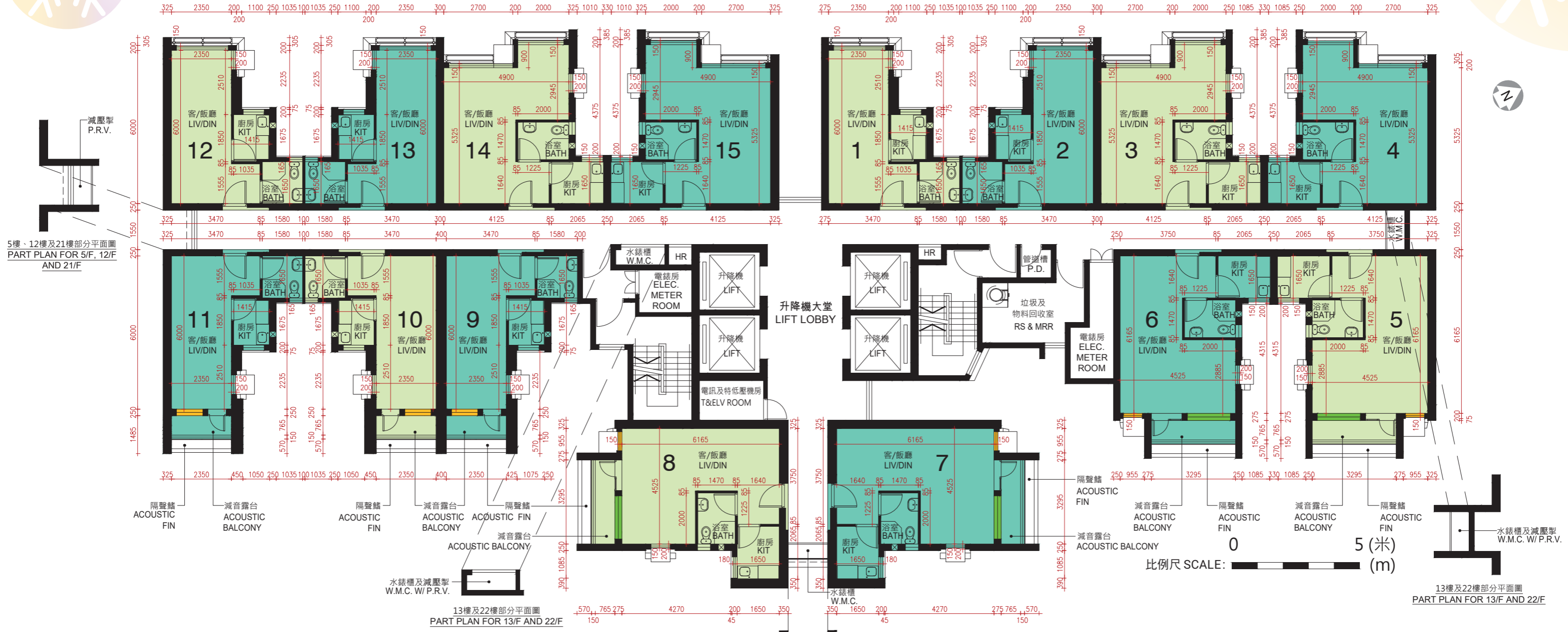
發展項目於平台一樓及平台二樓設有52個有蓋汽車停車位、3個有蓋暢通易達汽車停車位及14個有蓋電單車停車位。

There are 33 numbers of public covered Car Parking Space and 2 numbers of public covered Accessible Car Parking Space provided on Lower Ground Floor of the Development.

There are 52 numbers of covered Car Parking Space, 3 numbers of covered Accessible Car Parking Space and 14 numbers of covered Motorcycle Parking Space provided on Podium Level 1 and Podium Level 2 of the Development.

標準樓層平面圖 (5樓至36樓)

Typical Floor Plan (5/F-36/F)



圖例 NOTATION

BATH	浴室	Bathroom
KIT	廚房	Kitchen
HR	消防喉轆	Hose Reel
LIV/DIN	客/飯廳	Living/Dining Room
P.D.	管道槽	Pipe Duct
RS & MRR	垃圾及物料回收室	Refuse Storage and Material Recovery Room
W.M.C. W/P.R.V.	水錶櫃及減壓掣	Water Meter Cupboard with Pressure Reducing Valve
W.M.C.	水錶櫃	Water Meter Cupboard
P.R.V.	減壓掣	Pressure Reducing Valve
T&ELV ROOM	電訊及特低壓機房	Telecommunications and Extra Low Voltage Room
ELEC. METER ROOM	電錶房	Electrical Meter Room
	減音窗	Acoustic Window
	固定窗	Fixed Window

5樓、12樓、13樓、21樓及22樓
部分平面圖
PART PLAN FOR 5/F, 12/F,
13/F, 21/F AND 22/F

- 註：
1. 平面圖所列之數字為以毫米標示之建築結構尺寸。
 2. 每個住宅物業的層與層之間的高度為2.75米(36樓除外)。
 3. 每個住宅物業的樓板(不包括灰泥)的厚度為160毫米及215毫米(36樓除外)。
 - 36樓每個住宅物業的樓板(不包括灰泥)的厚度為200毫米。
 4. 大廈設有4部升降機。每個住宅樓層均有4部升降機到達。
 5. 為減低道路交通噪音的影響，部分單位設有減音露台、減音窗及/或固定窗。
 6. 此標準樓層平面圖是根據每座揀選一張可顯示每層最多住宅單位的圖則而選定。其他位於其餘樓層的住宅單位平面圖，請參閱將在選購單位日期前提供的售樓說明書。

Notes:

1. The dimensions on the floor plan are all structural dimensions in millimetre.
2. The floor-to-floor height of each residential property is 2.75m (except 36/F).
The floor-to-floor height of each residential property on 36/F is 2.79m.
3. The thicknesses of the floor slabs (excluding plaster) of each residential property are 160mm and 215mm (except 36/F).
The thicknesses of the floor slabs (excluding plaster) of each residential property on 36/F are 200mm.
4. There are 4 lifts in the building. Each residential floor is served by 4 lifts.
5. In order to mitigate the impact of road traffic noise, acoustic balconies, acoustic windows and / or fixed windows are provided for some flats.
6. This Typical Floor Plan is selected on the basis of selecting one floor plan per block which shows the most number of residential flats per floor. For floor plans of other residential flats on the remaining floors, please refer to the sales brochure which will be available before the date of flat selection.