

發展項目的位置圖


Location Plan of the Development



比例尺 SCALE: 0 50 100 150 200 250 (米) (m)



圖例 NOTATION

 興建中的一段安愉道*
Section of On Yu Road under Construction*

*只作識別用
*For Identification Purposes Only

此位置圖是參考地政總署測繪處於2024年8月4日出版之數碼地形圖(編號為T11-NE-D)製作,有需要處經修正處理。

地圖由空間數據共享平台入門網站提供,香港特別行政區政府為知識產權擁有人。

The Location Plan is prepared with reference to the Digital Topographic Map No. T11-NE-D dated 4 August 2024 from Survey and Mapping Office of the Lands Department, with adjustments where necessary.

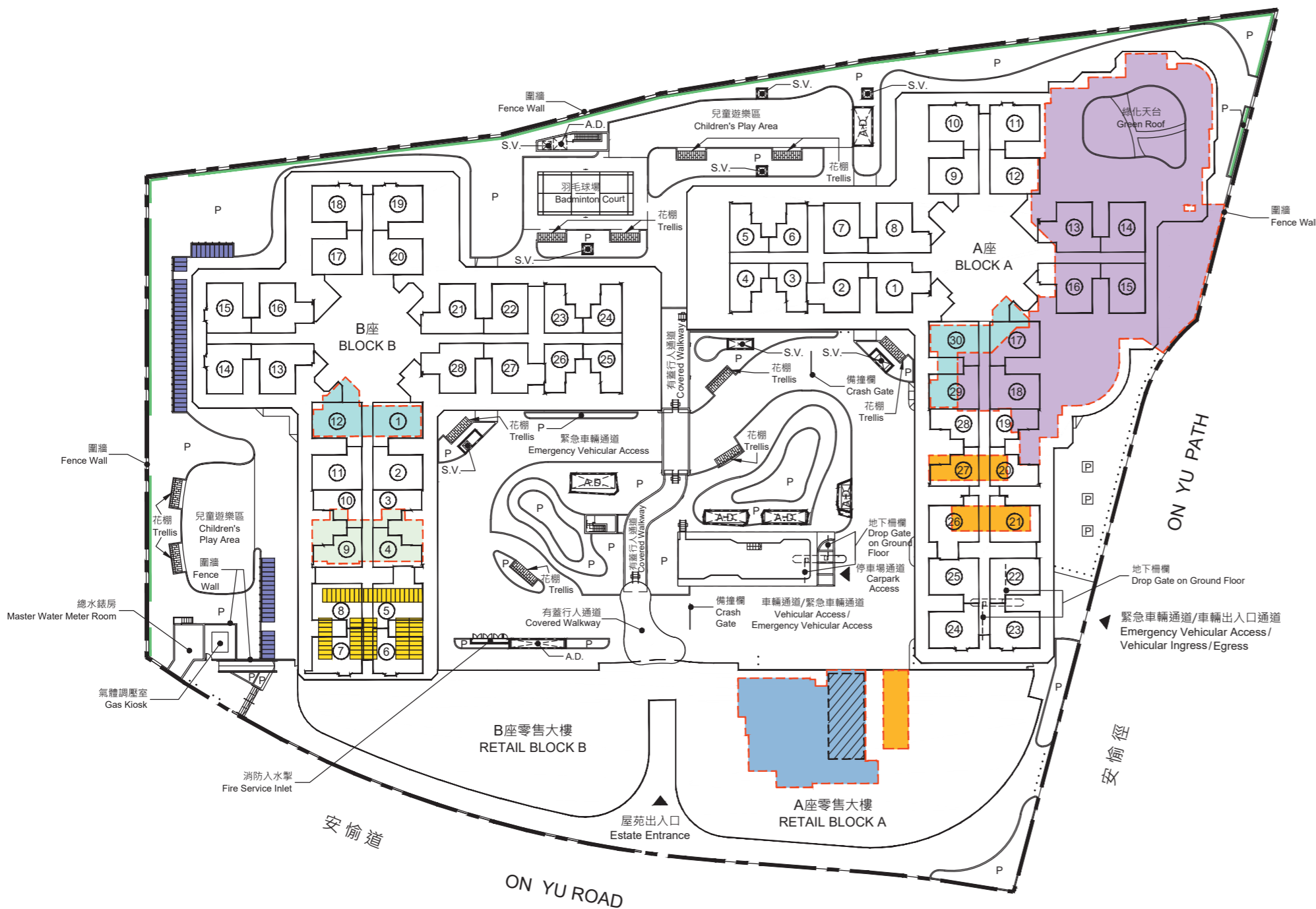
The map is provided by the Common Spatial Data Infrastructure Portal and intellectual property rights are owned by the Government of the HKSAR.

註: 賣方建議買方到該發展項目作實地考察,以對該發展項目、其周邊地區環境及附近的公共設施有較佳的了解。

Note: The Vendor advises purchasers to conduct on-site visit for a better understanding of the Development, its surrounding environment and the public facilities nearby.

發展項目的布局圖

Layout Plan of the Development



*A座2樓23號、24號單位及B座2樓6號、7號單位均不設窗台。
 *There is no provision of bay window in Flats 23, 24 on 2/F of Block A and Flats 6, 7 on 2/F of Block B.



圖例 NOTATION

- 地界
Lot Boundary
- ① A座2樓-33樓單位室號#
Block A Flat Number on 2/F-33/F#
B座2樓-33樓單位室號#
Block B Flat Number on 2/F-33/F#
- 垂直綠化
Vertical Greening
- P 花槽
Planter
- A.D. 通風槽
Air Duct Shaft
- S.V. 排煙口
Smoke Vent
- 地下垃圾及物料回收房
Refuse Storage & Material Recovery Chamber on Ground Floor
- 地下垃圾收集站、廢物收集站及垃圾及物料回收房
Refuse Collection Point, Junk Collection Point and Refuse Storage & Material Recovery Chamber on Ground Floor
- 地下有蓋健身區及乒乓球場
Covered Fitness Area and Table Tennis Court on Ground Floor
- 地下幼稚園
Kindergarten on Ground Floor

停車位類別 Category of Parking Space 數目 Number

	有蓋上落客貨停車位 Covered Loading and Unloading Spaces	3
	露天單車停車位 Open Bicycle Parking Spaces	61
	有蓋單車停車位 Covered Bicycle Parking Spaces	67
	有蓋上落垃圾收集車停車位 Covered Space for the Loading and Unloading of Refuse Collection Vehicles	1

發展項目於地庫設有166個有蓋汽車停車位、4個有蓋暢通易達汽車停車位及18個有蓋電車停車位。

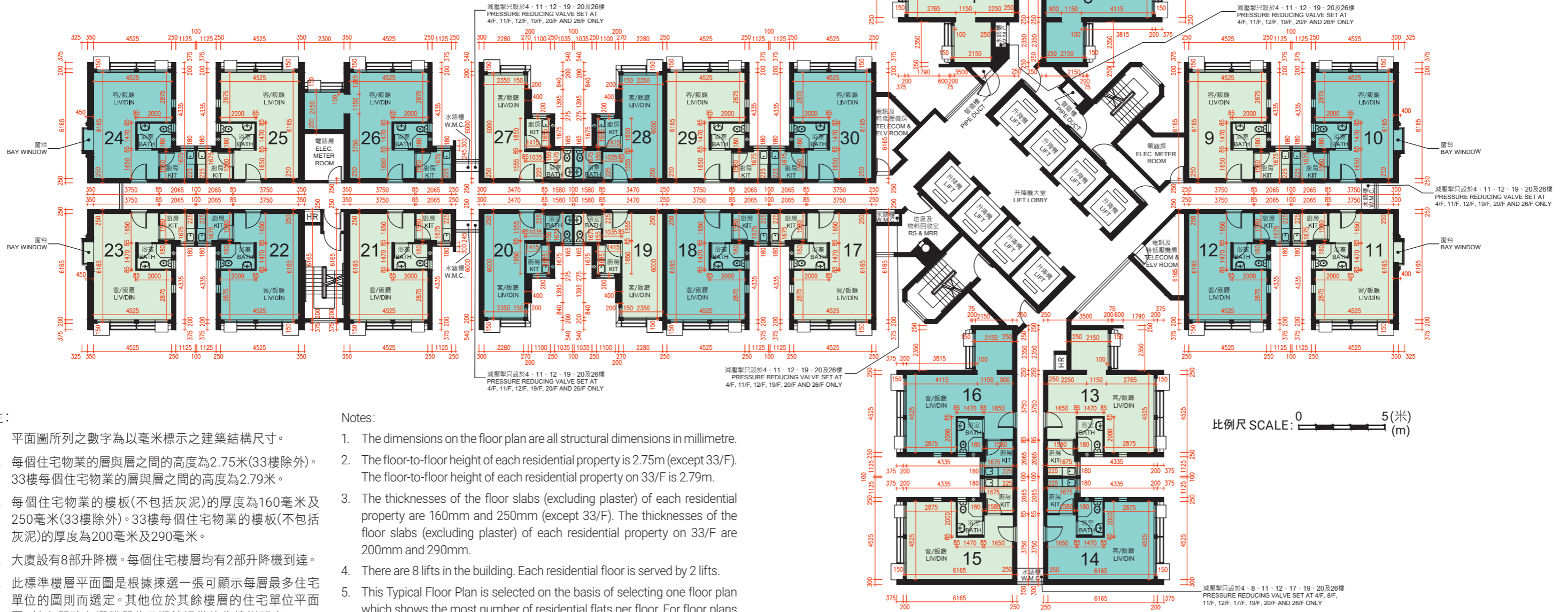
There are 166 numbers of covered Car Parking Space, 4 numbers of covered Accessible Car Parking Space and 18 numbers of covered Motorcycle Parking Space provided at the basement of the Development.

座標準樓層平面圖 (3樓至33樓)

Block A Typical Floor Plan (3/F-33/F)

圖例 NOTATION

BATH	浴室	Bathroom
ELEC. METER ROOM	電錶房	Electrical Meter Room
HR	消防喉轆	Hose Reel
KIT	廚房	Kitchen
LIV/DIN	客/飯廳	Living/Dining Room
RS & MRR	垃圾及物料回收室	Refuse Storage and Material Recovery Room
W.M.C.	水錶櫃	Water Meter Cupboard
TELECOM & ELV ROOM	電訊及特低壓機房	Telecommunications and Extra Low Voltage Room



註:

1. 平面圖所列之數字為以毫米標示之建築結構尺寸。
2. 每個住宅物業的層與層之間的高度為2.75米(33樓除外)。33樓每個住宅物業的層與層之間的高度為2.79米。
3. 每個住宅物業的樓板(不包括灰泥)的厚度為160毫米及250毫米(33樓除外)。33樓每個住宅物業的樓板(不包括灰泥)的厚度為200毫米及290毫米。
4. 大廈設有8部升降機。每個住宅樓層均有2部升降機到達。
5. 此標準樓層平面圖是根據揀選一張可顯示每層最多住宅單位的圖則而選定。其他位於其餘樓層的住宅單位平面圖，請參閱將在選購單位日期前提供的售樓說明書。

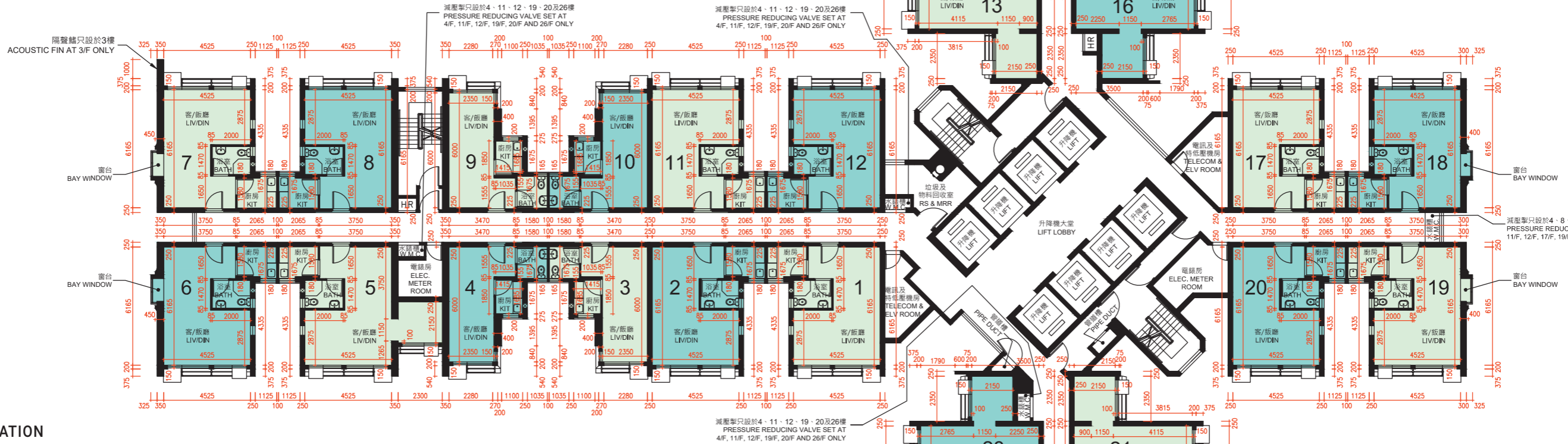
Notes:

1. The dimensions on the floor plan are all structural dimensions in millimetre.
2. The floor-to-floor height of each residential property is 2.75m (except 33/F). The floor-to-floor height of each residential property on 33/F is 2.79m.
3. The thicknesses of the floor slabs (excluding plaster) of each residential property are 160mm and 250mm (except 33/F). The thicknesses of the floor slabs (excluding plaster) of each residential property on 33/F are 200mm and 290mm.
4. There are 8 lifts in the building. Each residential floor is served by 2 lifts.
5. This Typical Floor Plan is selected on the basis of selecting one floor plan which shows the most number of residential flats per floor. For floor plans of other residential flats on the remaining floors, please refer to the sales brochure which will be available before the date of flat selection.

比例尺 SCALE: 0 5(米) (m)

B 座標準樓層平面圖 (3樓至33樓)

Block B Typical Floor Plan (3/F-33/F)



圖例 NOTATION

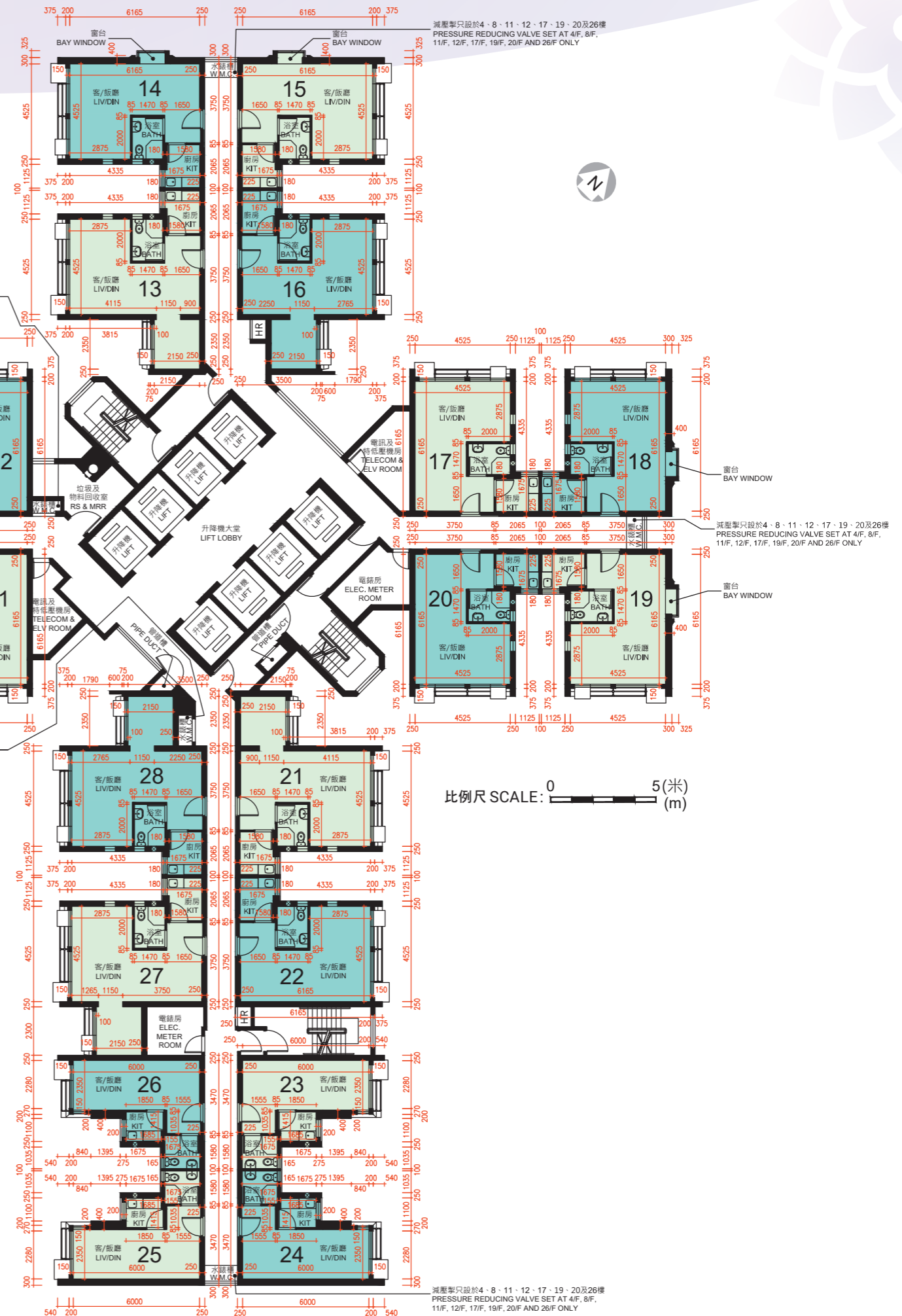
BATH	浴室	Bathroom
ELEC. METER ROOM	電錶房	Electrical Meter Room
HR	消防喉轆	Hose Reel
KIT	廚房	Kitchen
LIV/DIN	客/飯廳	Living/Dining Room
RS & MRR	垃圾及物料回收室	Refuse Storage and Material Recovery Room
W.M.C.	水錶櫃	Water Meter Cupboard
TELECOM & ELV ROOM	電訊及特低壓機房	Telecommunications and Extra Low Voltage Room

註:

1. 平面圖所列之數字為以毫米標示之建築結構尺寸。
2. 每個住宅物業的層與層之間的高度為2.75米(33樓除外)。33樓每個住宅物業的層與層之間的高度為2.79米。
3. 每個住宅物業的樓板(不包括灰泥)的厚度為160毫米及250毫米(33樓除外)。33樓每個住宅物業的樓板(不包括灰泥)的厚度為200毫米及290毫米。
4. 大廈設有8部升降機。每個住宅樓層均有2部升降機到達。
5. 此標準樓層平面圖是根據揀選一張可顯示每層最多住宅單位的圖則而選定。其他位於其餘樓層的住宅單位平面圖,請參閱將在選購單位日期前提供的售樓說明書。

Notes:

1. The dimensions on the floor plan are all structural dimensions in millimetre.
2. The floor-to-floor height of each residential property is 2.75m (except 33/F). The floor-to-floor height of each residential property on 33/F is 2.79m.
3. The thicknesses of the floor slabs (excluding plaster) of each residential property are 160mm and 250mm (except 33/F). The thicknesses of the floor slabs (excluding plaster) of each residential property on 33/F are 200mm and 290mm.
4. There are 8 lifts in the building. Each residential floor is served by 2 lifts.
5. This Typical Floor Plan is selected on the basis of selecting one floor plan which shows the most number of residential flats per floor. For floor plans of other residential flats on the remaining floors, please refer to the sales brochure which will be available before the date of flat selection.



比例尺 SCALE: 0 5(米) (m)