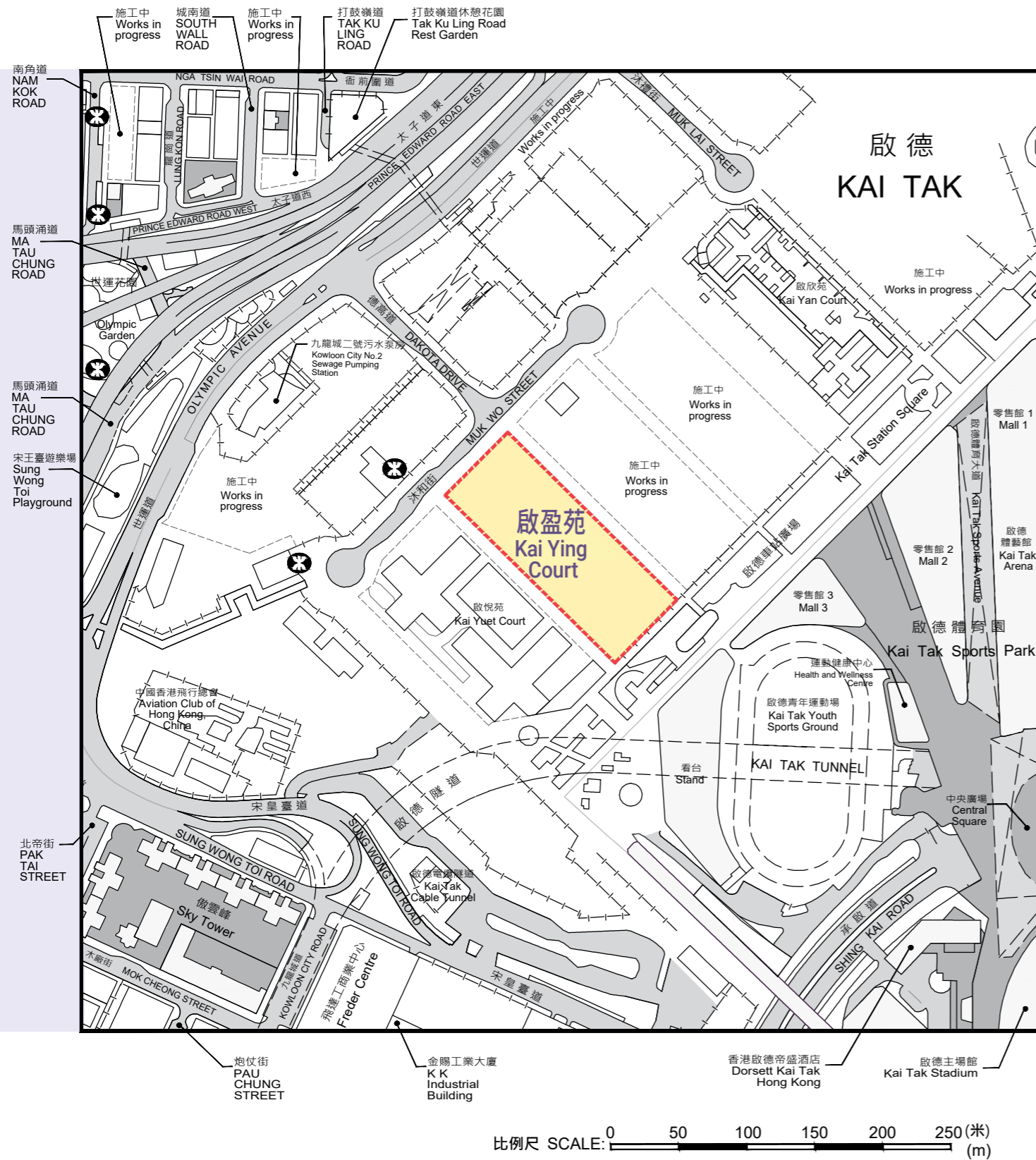
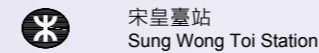


發展項目的位置圖

Location Plan of the Development



圖例 NOTATION



宋皇臺站
Sung Wong Toi Station

此位置圖是參考地政總署測繪處於2026年2月12日出版之數碼地形圖(編號分別為T11-NE-A及T11-NE-C)製作,有需要處經修正處理。地圖由空間數據共享平台入門網站提供,香港特別行政區政府為知識產權擁有人。

The Location Plan is prepared with reference to the Digital Topographic Map Nos. T11-NE-A and T11-NE-C all dated 12 February 2026 from Survey and Mapping Office of the Lands Department, with adjustments where necessary.

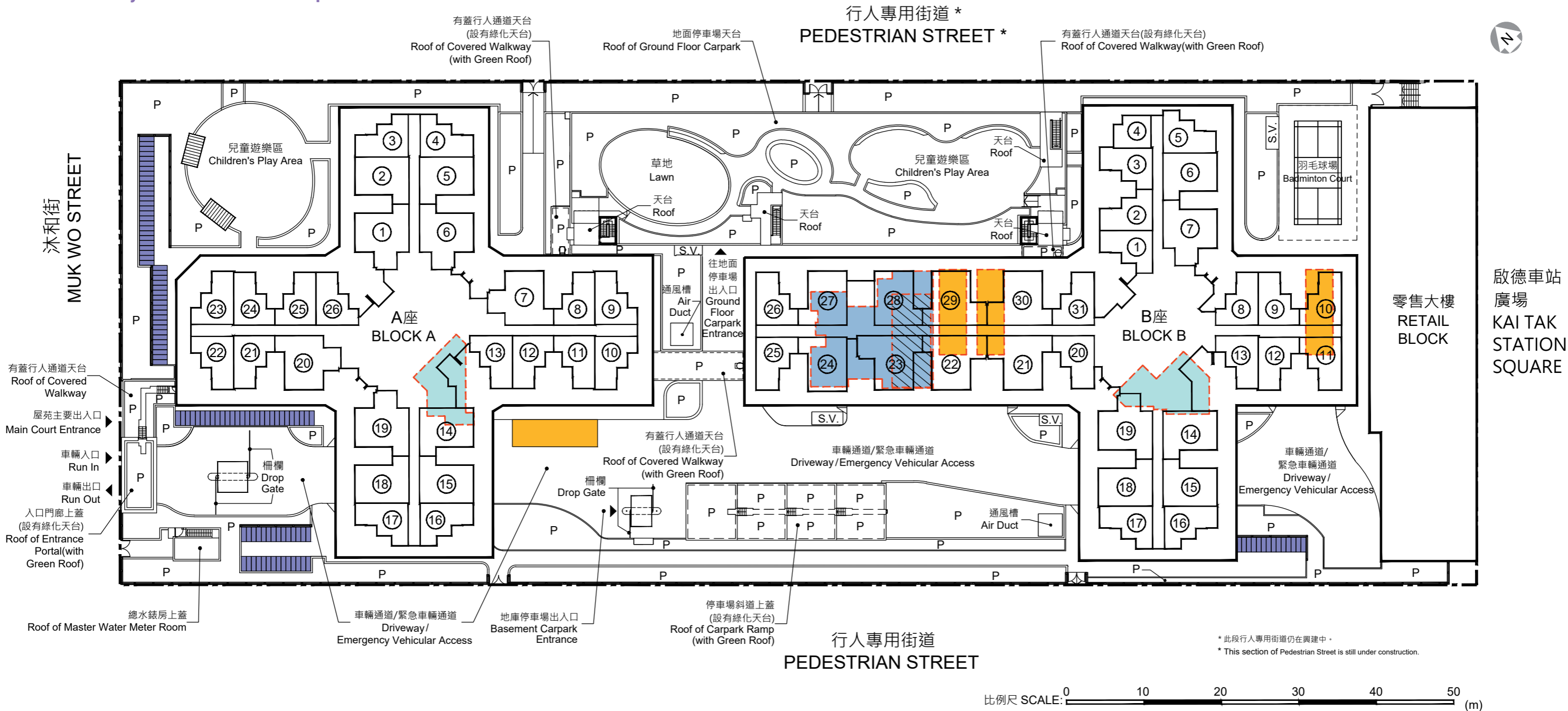
The map is provided by the Common Spatial Data Infrastructure Portal and intellectual property rights are owned by the Government of the HKSAR.

註: 賣方建議買方到該發展項目作實地考察,以對該發展項目、其周邊地區環境及附近的公共設施有較佳的了解。

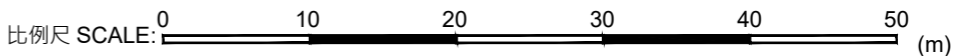
Note: The Vendor advises purchasers to conduct on-site visit for a better understanding of the Development, its surrounding environment and the public facilities nearby.

發展項目的布局圖

Layout Plan of the Development



* 此段行人專用街道仍在興建中。
* This section of Pedestrian Street is still under construction.

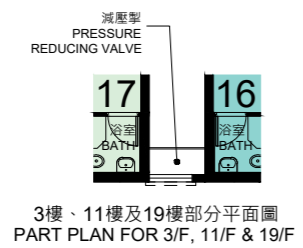
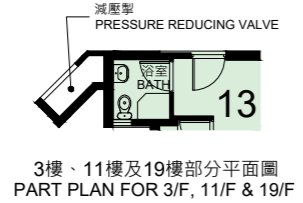
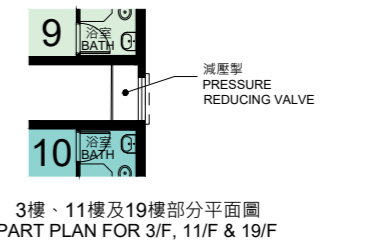
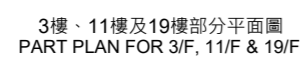
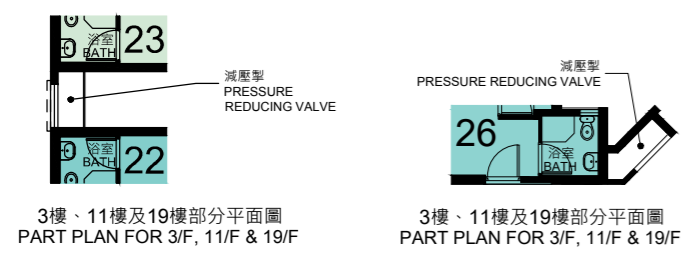
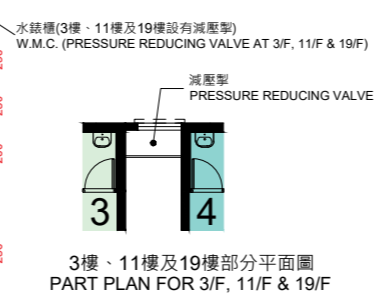
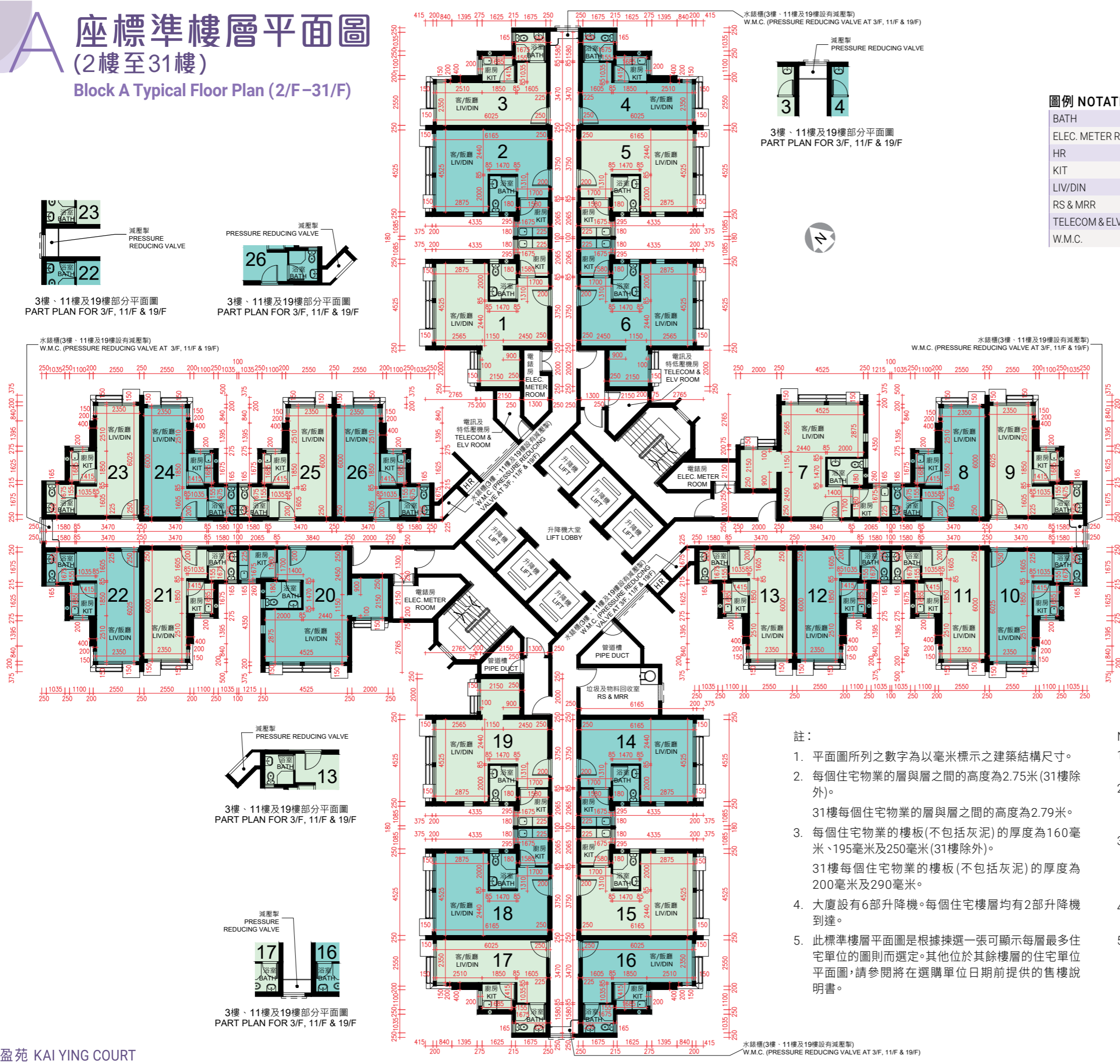


圖例 NOTATION

圖例 NOTATION		停車位類別	Category of Parking Space	數目 Number	
---	地界 Lot Boundary		地下露天上落客貨停車位 Open Loading and Unloading Bay on Ground Floor	1	發展項目分別於地下及地庫另設有128個有蓋汽車停車位、4個有蓋暢通易達汽車停車位及16個有蓋電單車停車位。 There are also 128 covered Car Parking Spaces, 4 covered Accessible Car Parking Spaces and 16 covered Motorcycle Parking Spaces provided at the Ground Floor and Basement of the Development.
①	A座1樓至31樓單位室號 Block A Flat Number on 1/F-31/F B座1樓至30樓單位室號 Block B Flat Number on 1/F-30/F		地下有蓋上落客貨停車位 Covered Loading and Unloading Bays on Ground Floor	3	
P	花槽 Planter		地下露天單車停車位 Open Bicycle Parking Spaces on Ground Floor	116	
S.V.	排煙口 Smoke Vent		地下有蓋垃圾車專用車位 Covered Loading and Unloading Space Reserved for Refuse Collection Vehicle on Ground Floor	1	
	花棚 Trellis				
	地下垃圾及物料回收房 Refuse Storage and Material Recovery Chamber on Ground Floor				
	地下廢物收集站及垃圾存放處 Junk Collection Point and Refuse Storage on Ground Floor				

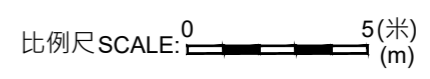
A 座標準樓層平面圖 (2樓至31樓)

Block A Typical Floor Plan (2/F - 31/F)



圖例 NOTATION

BATH	浴室	Bathroom
ELEC. METER ROOM	電錶房	Electrical Meter Room
HR	消防喉轆	Hose Reel
KIT	廚房	Kitchen
LIV/DIN	客/飯廳	Living/Dining Room
RS & MRR	垃圾及物料回收室	Refuse Storage and Material Recovery Room
TELECOM & ELV ROOM	電訊及特低壓機房	Telecommunications and Extra Low Voltage Room
W.M.C.	水錶櫃	Water Meter Cupboard



- 註：
1. 平面圖所列之數字為以毫米標示之建築結構尺寸。
 2. 每個住宅物業的層與層之間的高度為2.75米(31樓除外)。
31樓每個住宅物業的層與層之間的高度為2.79米。
 3. 每個住宅物業的樓板(不包括灰泥)的厚度為160毫米、195毫米及250毫米(31樓除外)。
31樓每個住宅物業的樓板(不包括灰泥)的厚度為200毫米及290毫米。
 4. 大廈設有6部升降機。每個住宅樓層均有2部升降機到達。
 5. 此標準樓層平面圖是根據揀選一張可顯示每層最多住宅單位的圖則而選定。其他位於其餘樓層的住宅單位平面圖,請參閱將在選購單位日期前提供的售樓說明書。

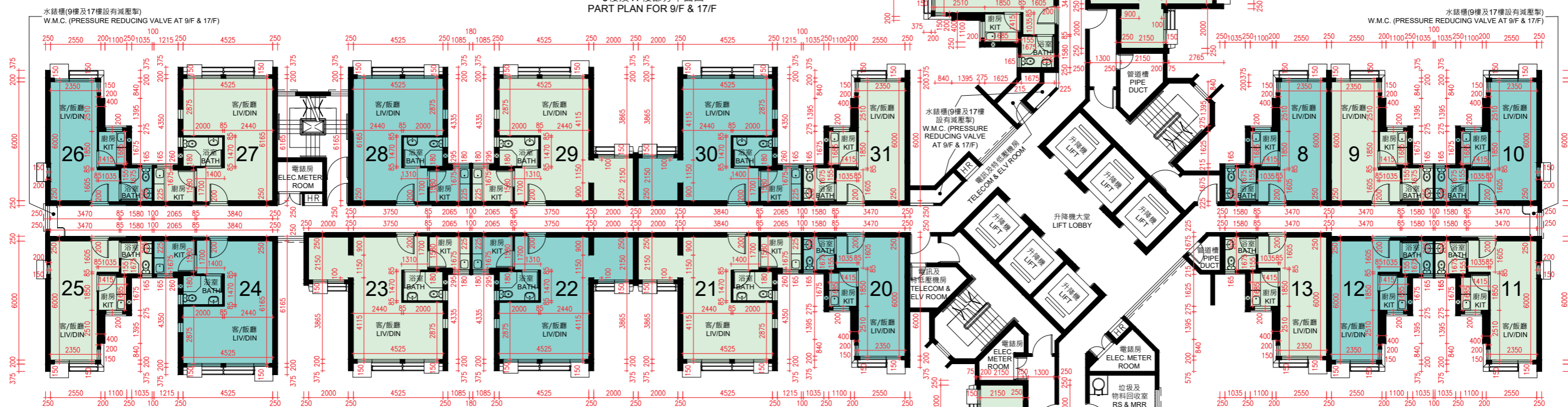
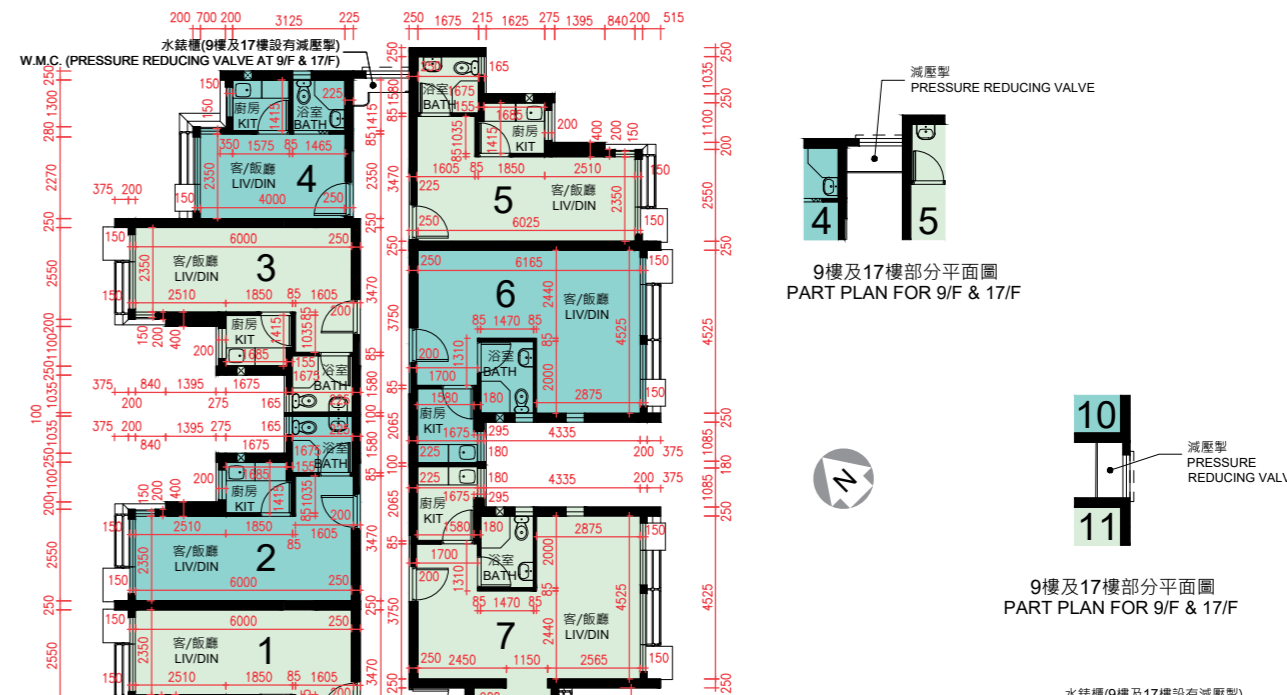
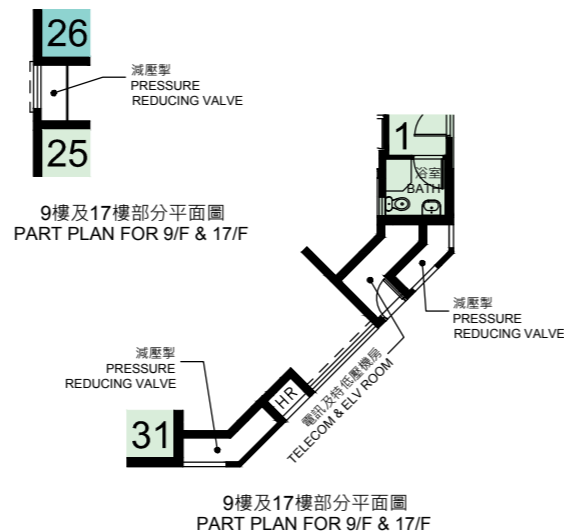
- Notes:
1. The dimensions on the floor plan are all structural dimensions in millimetre.
 2. The floor-to-floor height of each residential property is 2.75m (except 31/F).
The floor-to-floor height of each residential property on 31/F is 2.79m.
 3. The thicknesses of the floor slabs (excluding plaster) of each residential property are 160mm, 195mm and 250mm (except 31/F).
The thicknesses of the floor slabs (excluding plaster) of each residential property on 31/F are 200mm and 290mm.
 4. There are 6 lifts in the building. Each residential floor is served by 2 lifts.
 5. This Typical Floor Plan is selected on the basis of selecting one floor plan which shows the most number of residential flats per floor. For floor plans of other residential flats on the remaining floors, please refer to the sales brochure which will be available before the date of flat selection.

B 座標準樓層平面圖 (2樓至30樓)

Block B Typical Floor Plan (2/F-30/F)

圖例 NOTATION

BATH	浴室	Bathroom
ELEC. METER ROOM	電錶房	Electrical Meter Room
HR	消防喉轆	Hose Reel
KIT	廚房	Kitchen
LIV/DIN	客/飯廳	Living/Dining Room
RS & MRR	垃圾及物料回收室	Refuse Storage and Material Recovery Room
TELECOM & ELV ROOM	電訊及特低壓機房	Telecommunications and Extra Low Voltage Room
W.M.C.	水錶櫃	Water Meter Cupboard



- 註：
1. 平面圖所列之數字為以毫米標示之建築結構尺寸。
 2. 每個住宅物業的層與層之間的高度為2.75米(30樓除外)。
30樓每個住宅物業的層與層之間的高度為2.79米。
 3. 每個住宅物業的樓板(不包括灰泥)的厚度為160毫米、195毫米及250毫米(30樓除外)。
30樓每個住宅物業的樓板(不包括灰泥)的厚度為200毫米及290毫米。
 4. 大廈設有6部升降機。每個住宅樓層均有2部升降機到達。
 5. 此標準樓層平面圖是根據揀選一張可顯示每層最多住宅單位的圖則而選定。其他位於其餘樓層的住宅單位平面圖，請參閱將在選購單位日期前提供的售樓說明書。

- Notes:
1. The dimensions on the floor plan are all structural dimensions in millimetre.
 2. The floor-to-floor height of each residential property is 2.75m (except 30/F).
The floor-to-floor height of each residential property on 30/F is 2.79m.
 3. The thicknesses of the floor slabs (excluding plaster) of each residential property are 160mm, 195mm and 250mm (except 30/F).
The thicknesses of the floor slabs (excluding plaster) of each residential property on 30/F are 200mm and 290mm.
 4. There are 6 lifts in the building. Each residential floor is served by 2 lifts.
 5. This Typical Floor Plan is selected on the basis of selecting one floor plan which shows the most number of residential flats per floor. For floor plans of other residential flats on the remaining floors, please refer to the sales brochure which will be available before the date of flat selection.

