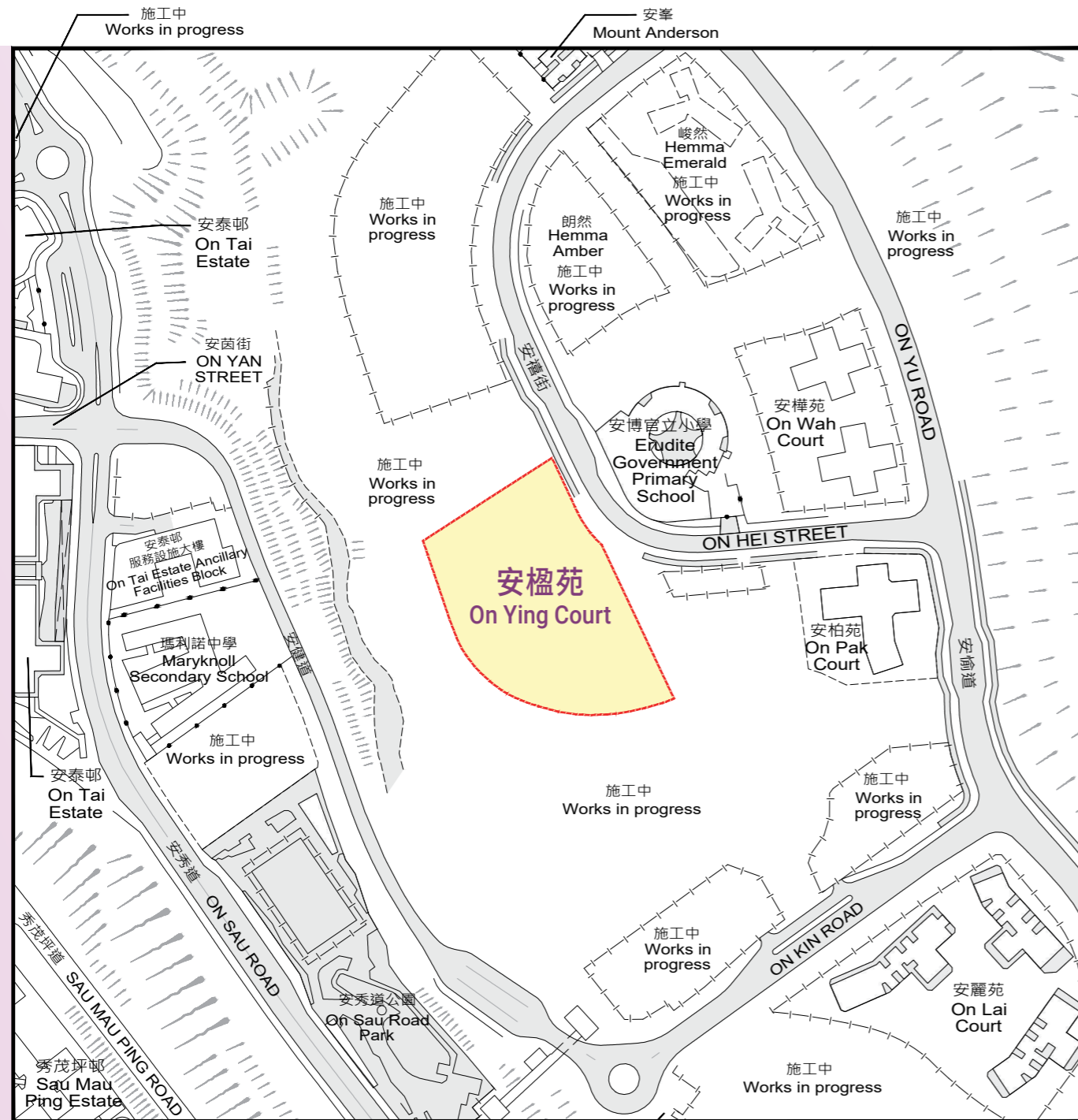


發展項目的位置圖

Location Plan of the Development



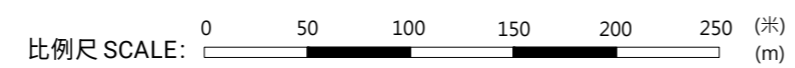
此位置圖是參考地政總署測繪處於2026年2月12日出版之數碼地形圖（編號分別為T11-NE-B及T11-NE-D）製作，有需要處經修正處理。地圖由空間數據共享平台入門網站提供，香港特別行政區政府為知識產權擁有人。

The Location Plan is prepared with reference to the Digital Topographic Map Nos. T11-NE-B and T11-NE-D all dated 12 February 2026 from Survey and Mapping Office of the Lands Department, with adjustments where necessary.

The map is provided by the Common Spatial Data Infrastructure Portal and intellectual property rights are owned by the Government of the HKSAR.

註：賣方建議買方到該發展項目作實地考察，以對該發展項目、其周邊地區環境及附近的公共設施有較佳的了解。

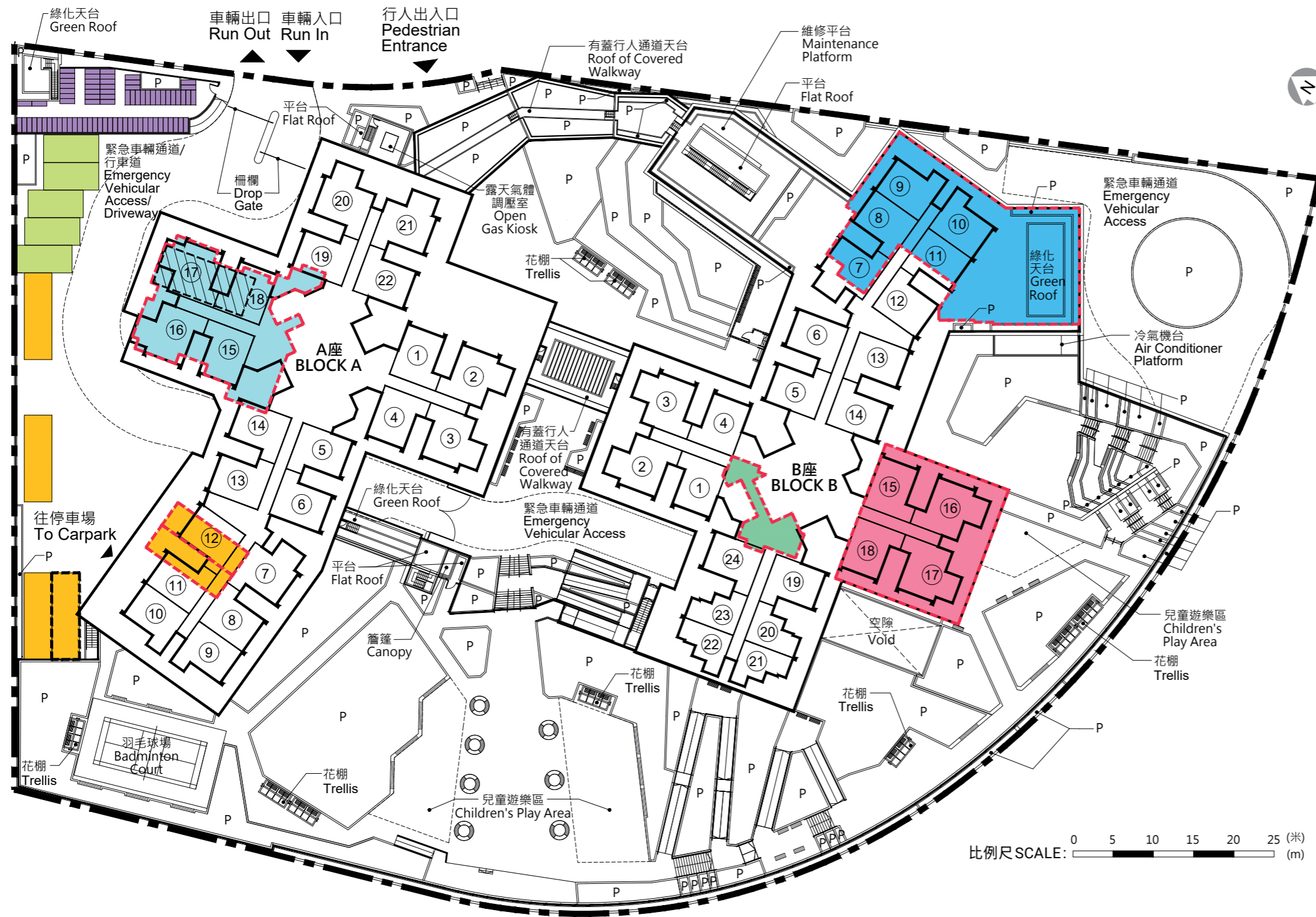
Note: The Vendor advises purchasers to conduct on-site visit for a better understanding of the Development, its surrounding environment and the public facilities nearby.



發展項目的布局圖

Layout Plan of the Development

安禧街
ON HEI STREET



圖例 NOTATION

- 地界
Lot Boundary
- A座1樓至26樓單位室號
(15樓至26樓不設9號及10號單位)
Block A Flat Number on 1/F – 26/F
(No provision of Flat 9 and Flat 10 for 15/F – 26/F)
- B座1樓至26樓單位室號
(1樓至2樓不設15號至18號單位)
(15樓至26樓不設16號及17號單位)
Block B Flat Number on 1/F – 26/F
(No provision of Flat 15 – Flat 18 for 1/F – 2/F)
(No provision of Flat 16 and Flat 17 for 15/F – 26/F)
- 花槽
Planter
- 地下長者鄰舍中心
Neighbourhood Elderly Centre on Ground Floor
- 地下廢物收集站、物料回收站、垃圾收集站及垃圾及物料回收房
Junk Collection Point, Material Recovery Point, Refuse Collection Point and Refuse Storage and Material Recovery Chamber on Ground Floor
- 地下垃圾及物料回收房
Refuse Storage and Material Recovery Chamber on Ground Floor
- 1樓有蓋園景區/兒童遊樂區
Covered Landscaped Area / Children's Play Area on First Floor

停車位類別 Category of Parking Space 數目 Number

- 地下露天輕型貨車停車位
Open Light Goods Vehicle Parking Spaces on Ground Floor 5
- 地下露天上落客貨停車位
Open Loading and Unloading Bays on Ground Floor 3
- 地下部分有蓋上落客貨停車位
Partially Covered Loading and Unloading Bay on Ground Floor 1
- 地下有蓋上落客貨停車位
Covered Loading and Unloading Bays on Ground Floor 2
- 地下露天單車停車位
Open Bicycle Parking Spaces on Ground Floor 76
- 地下有蓋垃圾車專用車位
Covered Loading and Unloading Space Reserved for Refuse Collection Vehicle on Ground Floor 1

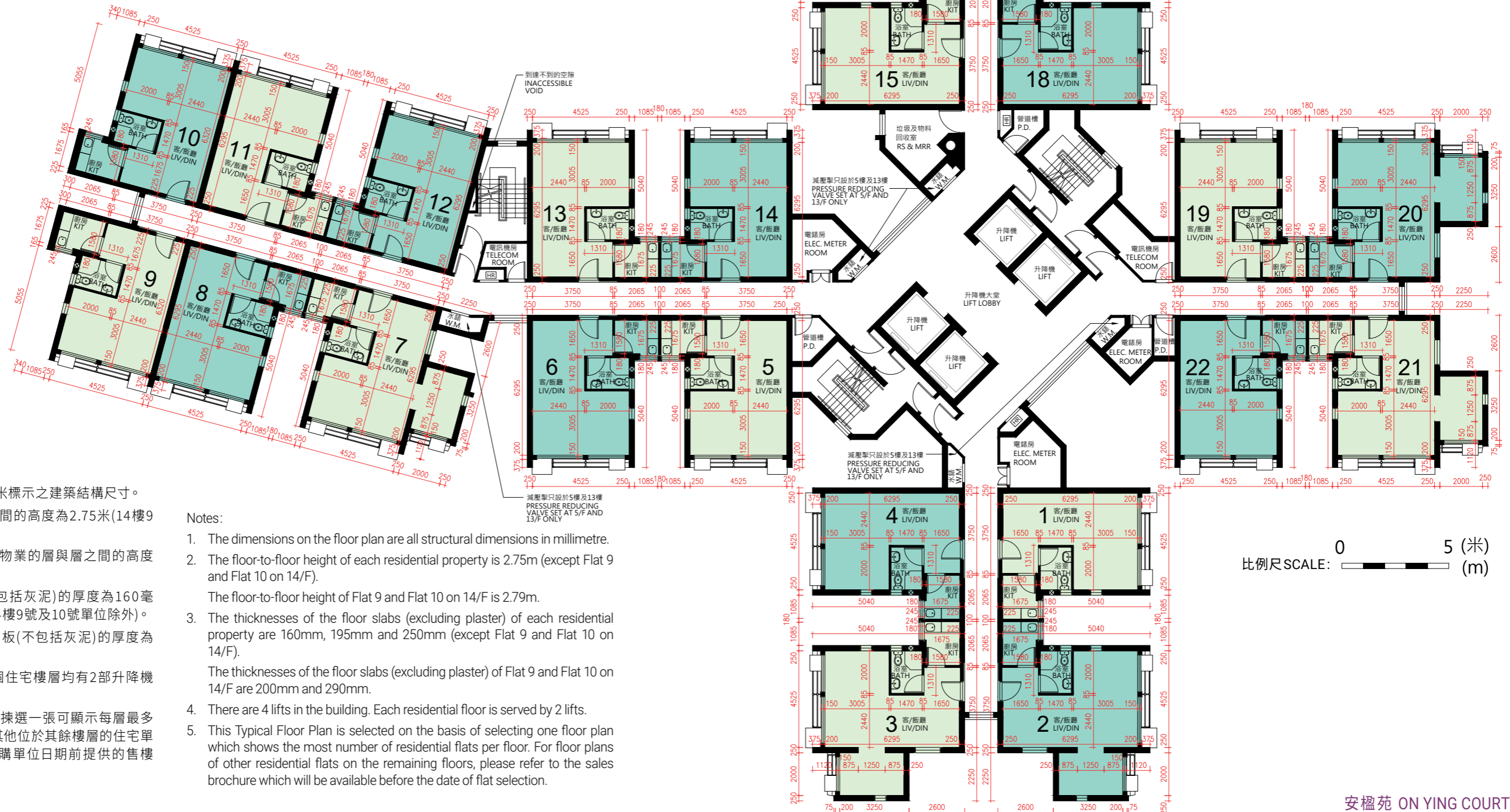
發展項目於地下另設有106個有蓋汽車停車位，2個有蓋暢通易達汽車停車位及11個有蓋單車停車位。
There are also 106 covered Car Parking Spaces, 2 covered Accessible Car Parking Spaces and 11 covered Motorcycle Parking Spaces provided on Ground Floor of the Development.

A 座標準樓層平面圖 (2樓至14樓)

Block A Typical Floor Plan (2/F-14/F)

圖例 NOTATION

BATH	浴室	Bathroom
ELEC. METER ROOM	電錶房	Electrical Meter Room
HR	消防喉轆	Hose Reel
KIT	廚房	Kitchen
LIV/DIN	客/飯廳	Living/Dining Room
P.D.	管道槽	Pipe Duct
RS & MRR	垃圾及物料回收室	Refuse Storage and Material Recovery Room
TELECOM ROOM	電訊機房	Telecommunications Room
W.M.	水錶	Water Meters



註：

1. 平面圖所列之數字為以毫米標示之建築結構尺寸。
2. 每個住宅物業的層與層之間的高度為2.75米(14樓9號及10號單位除外)。
14樓9號及10號單位住宅物業的層與層之間的高度為2.79米。
3. 每個住宅物業的樓板(不包括灰泥)的厚度為160毫米、195毫米及250毫米(14樓9號及10號單位除外)。
14樓9號及10號單位的樓板(不包括灰泥)的厚度為200毫米及290毫米。
4. 大廈設有4部升降機。每個住宅樓層均有2部升降機到達。
5. 此標準樓層平面圖是根據揀選一張可顯示每層最多住宅單位的圖則而選定。其他位於其餘樓層的住宅單位平面圖，請參閱將在選購單位日期前提供的售樓說明書。

Notes:

1. The dimensions on the floor plan are all structural dimensions in millimetre.
2. The floor-to-floor height of each residential property is 2.75m (except Flat 9 and Flat 10 on 14/F).
The floor-to-floor height of Flat 9 and Flat 10 on 14/F is 2.79m.
3. The thicknesses of the floor slabs (excluding plaster) of each residential property are 160mm, 195mm and 250mm (except Flat 9 and Flat 10 on 14/F).
The thicknesses of the floor slabs (excluding plaster) of Flat 9 and Flat 10 on 14/F are 200mm and 290mm.
4. There are 4 lifts in the building. Each residential floor is served by 2 lifts.
5. This Typical Floor Plan is selected on the basis of selecting one floor plan which shows the most number of residential flats per floor. For floor plans of other residential flats on the remaining floors, please refer to the sales brochure which will be available before the date of flat selection.

B 座標準樓層平面圖 (3樓至14樓)

Block B Typical Floor Plan (3/F-14/F)

圖例 NOTATION

BATH	浴室	Bathroom
ELEC. METER ROOM	電錶房	Electrical Meter Room
HR	消防喉轆	Hose Reel
KIT	廚房	Kitchen
LIV/DIN	客/飯廳	Living/Dining Room
P.D.	管道槽	Pipe Duct
RS & MRR	垃圾及物料回收室	Refuse Storage and Material Recovery Room
TELECOM ROOM	電訊機房	Telecommunications Room
W.M.	水錶	Water Meters
	簷篷/平台	Canopy/Flat Roof
	罩屋	Dog House



註：

1. 平面圖所列之數字為以毫米標示之建築結構尺寸。
2. 每個住宅物業的層與層之間的高度為2.75米(14樓16號及17號單位除外)。
14樓16號及17號單位住宅物業的層與層之間的高度為2.79米。
3. 每個住宅物業的樓板(不包括灰泥)的厚度為160毫米、195毫米及250毫米(14樓16號及17號單位除外)。
14樓16號及17號單位的樓板(不包括灰泥)的厚度為200毫米及290毫米。
4. 大廈設有4部升降機。每個住宅樓層均有2部升降機到達。
5. 此標準樓層平面圖是根據揀選一張可顯示每層最多住宅單位的圖則而選定。其他位於其餘樓層的住宅單位平面圖，請參閱將在選購單位日期前提供的售樓說明書。

Notes:

1. The dimensions on the floor plan are all structural dimensions in millimetre.
2. The floor-to-floor height of each residential property is 2.75m (except Flat 16 and Flat 17 on 14/F).
The floor-to-floor height of Flat 16 and Flat 17 on 14/F is 2.79m.
3. The thicknesses of the floor slabs (excluding plaster) of each residential property are 160mm, 195mm and 250mm (except Flat 16 and Flat 17 on 14/F).
The thicknesses of the floor slabs (excluding plaster) of Flat 16 and Flat 17 on 14/F are 200mm and 290mm.
4. There are 4 lifts in the building. Each residential floor is served by 2 lifts.
5. This Typical Floor Plan is selected on the basis of selecting one floor plan which shows the most number of residential flats per floor. For floor plans of other residential flats on the remaining floors, please refer to the sales brochure which will be available before the date of flat selection.